

Converting Colors

XYZ(59.9656, 58.1127, 51.6539)

Have a look what the booklet for
XYZ(59.9656, 58.1127, 51.6539)
contains.

XYZ(60.0436, 58.2991, 51.8043)	3
<i>Conversions</i>	4
<i>Details</i>	6
<i>Harmonies</i>	12
<i>Previews</i>	24
<i>Color Blindness Simulation</i>	28
<i>CSS Examples</i>	31

Color

**XYZ(60.0436, 58.2991,
51.8043)**

Conversions

Conversions Part 1

Format	Color
Hex	E6C1B5
RGB	230, 193, 181
RGB Percent	90%, 76%, 71%
CMY	0.0980, 0.2431, 0.2902
CMYK	0.00, 0.16, 0.21, 0.10
HSL	15°, 49%, 81%
HSV	15°, 21%, 90%
XYZ	60.0436, 58.2991, 51.8043
YIQ	202.6950, 25.9040, 4.1120

Conversions

Conversions Part 2

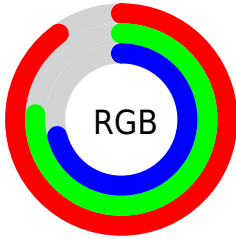
Format	Color
R _Y B	230, 197, 181
Decimal	15122869
CIE Lab	80.90, 11.33, 10.94
CIE LCh	81, 15.751, 44.007
Yxy	58.2991, 0.3529, 0.3426
Android (android.graphics.Color)	4293312949 (0xFFE6C1B5)
YUV	202.6950, -10.6956, 23.9465
Hunter-Lab	76.3538, 6.7507, 13.2208

Details

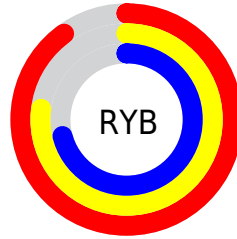
The XYZ color **60.0436, 58.2991, 51.8043** is a light color, and the websafe version is hex **FFCCCC**. A complement of this color would be **58.4099, 65.6782, 84.4620**, and the grayscale version is **56.6283, 59.5774, 64.8798**.

A 20% lighter version of the original color is **90.4017, 95.1258, 93.7172**, and **30.5845, 29.0224, 24.4120** is the 20% darker color. If you saturate the color by 10%, you get **54.2599, 50.2015, 39.1785**, and if you desaturate by 10%, it is **66.6709, 67.4594, 66.6348**.

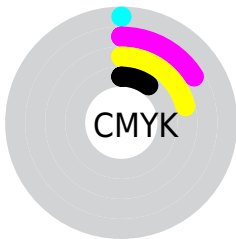
Distribution



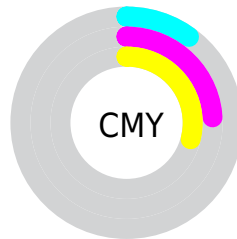
- Red (90%)
- Green (76%)
- Blue (71%)



- Red (90%)
- Yellow (77%)
- Blue (71%)



- Cyan (0%)
- Magenta (16%)
- Yellow (21%)
- Black (10%)





- Cyan (10%)
- Magenta (24%)
- Yellow (29%)

Brightness & Saturation Gradients


These gradients show how the XYZ color 60.0436, 58.2991, 51.8043 changes by changing the brightness by 10 percent. The first figure shows a shift by +10% for each color and the second figure -10%.

Similar to the brightness gradients but the following saturation gradients show a change of the XYZ color 60.0436, 58.2991, 51.8043 by changing the saturation by 10% instead.


 60.0436, 58.2991,
51.8043

 60.0436, 58.2991,
51.8043


414.5906,
418.2995, 410.6161

 43.7034, 42.0492,
36.4679


 103.9989,
102.3583, 94.2662

 30.6343, 29.1398,
24.5033

132.3447,
130.9363, 122.2288

 20.4710, 19.1866,
15.4917


165.4230,
164.3925, 155.2373

 12.8481, 11.8052,
9.0148

203.5993,
203.1112, 193.7101

 7.4003, 6.6112,
4.6539

247.2388,
247.4769, 238.0659

 3.7622, 3.2201,
1.9905

296.7070,

 1.5685, 1.2477,

297.8739, 288.7231

0.5494

352.3691,
354.6867, 346.1003

■ 0.3718, 0.1002,
0.0000

■ 0.0000, 0.0000,
0.0000

■ 60.0436, 58.2991,
51.8043

■ 60.0436, 58.2991,
51.8043

■ 54.2599, 50.2015,
39.1785

■ 66.6709, 67.4594,
66.6348

■ 49.2804, 43.1200,
28.6478

■ 74.1696, 77.7111,
83.7648

■ 45.0696, 37.0160,
20.0990

■ 82.5721, 89.0917,
103.2883

■ 41.5872, 31.8457,
13.4064

■ 86.4433, 95.5631,
108.4972

■ 38.7892, 27.5614,
8.4299

■ 36.6263, 24.1112,
5.0091

■ 35.0414, 21.4373,
2.9528

■ 34.0644, 19.6852,
2.0042

Harmonies

Analogous

The Analogous color harmony consists of three colors that are next to each other on the color wheel.



61.7189, 58.2991, 59.2309



60.0436, 58.2991, 51.8043



57.1566, 58.2991, 47.7367

Triad

The Triadic color harmony groups three colors that are evenly spaced from another and form a triangle on the color wheel.



60.0436, 58.2991, 51.8043



49.6014, 58.2991, 58.6589



56.9427, 58.2991, 82.5385

Complementary

The Complementary color scheme is a pair of colors which are on the opposite of each other on the color wheel.



60.0436, 58.2991, 51.8043



58.4099, 65.6782, 84.4620

Split Complementary

Split-complementary colors differ from the complementary color scheme. The scheme consists of three colors, the original color and two neighbors of the complement color.



53.7023, 58.2991, 82.3468



60.0436, 58.2991, 51.8043



49.5492, 58.2991, 67.9230

Square

The Square scheme is like the rectangle color scheme, but the four colors are evenly spaced on the color wheel.



60.0436, 58.2991, 51.8043



51.1696, 58.2991, 51.4211



51.0241, 58.2991, 76.7851



59.8817, 58.2991, 77.2856

Rectangle

The Rectangle color scheme consists of four colors that form a rectangle on the color wheel.



60.0436, 58.2991, 51.8043



54.9746, 58.2991, 47.2004



51.0241, 58.2991, 76.7851



55.8508, 58.2991, 83.1235

Sweetspot

The Sweet Spot groups the original color and five complimentary colors.



60.0452, 58.3018, 51.8055



89.1085, 91.9033, 95.2472



61.8868, 54.9632, 74.0669



18.9398, 19.4891, 20.0828



0.0000, 0.0000, 0.0000



20.3446, 21.4041, 23.3091

Same Dimension

The Same Dimension uses a secret algorithm to generate beautiful new colors.



60.0452, 58.3018, 51.8055



72.2103, 68.5563, 57.4003



65.7699, 69.7512, 53.7137



14.6623, 14.9386, 15.0151



19.3657, 11.3055, 1.1615



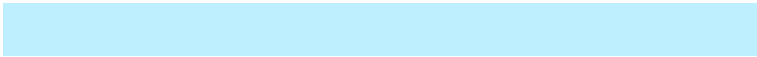
1.5028, 0.9789, 0.1097

Inverse Universe

The Inverse Universe completely reimagines the original color for something new.



58.4099, 65.6782, 84.4620



69.7575, 79.5916, 106.2938



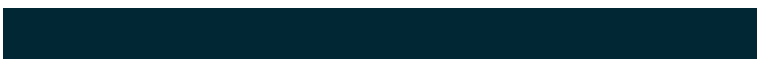
52.6463, 54.1510, 82.5408



14.4927, 15.7067, 18.4122



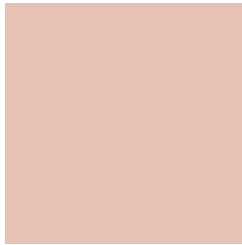
16.7181, 20.4983, 45.4586



1.3069, 1.6578, 3.3831

Previews

White Background



This preview shows how the XYZ color 60.0436, 58.2991, 51.8043 looks on a white background.

Color Contrast Check

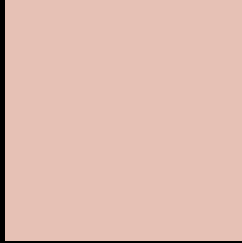
Large Text (above 18pt) WCAG AA × Fail

Any Text WCAG AA × Fail

Large Text (above 18pt) WCAG AAA × Fail

Any Text WCAG AAA × Fail

Black Background



This preview shows how the XYZ color 60.0436, 58.2991, 51.8043 looks on a black background.

Color Contrast Check

Large Text (above 18pt) WCAG AA ✓ Pass

Any Text WCAG AA ✓ Pass

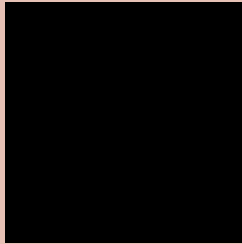
Large Text (above 18pt) WCAG AAA ✓ Pass

Any Text WCAG AAA ✓ Pass

If you want to check with other color combinations, try the [Color Contrast Checker](#).

XYZ 60.0436, 58.2991, 51.8043

Background



This preview shows how black text looks on a background with the XYZ color 60.0436, 58.2991, 51.8043.



This preview shows how white text looks on a background with the XYZ color 60.0436, 58.2991,

Color Blindness Simulation

Color vision deficiency is a very complex topic, and I could not describe the different causes any better than Wikipedia does, so if you want to learn more, you should check out their [article about color blindness](#).

Dichromacy



Original Color

60.0436, 58.2991, 51.8043

Protanopia

55.4237, 58.2212, 54.2156

Deuteranopia

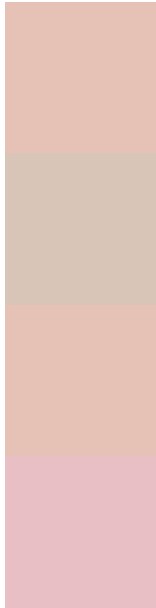
59.6272, 58.4137, 51.8484



Tritanopia

62.9168, 58.5102, 65.1043

Trichromacy



Original Color

60.0436, 58.2991, 51.8043

Protanomaly

56.9369, 57.9921, 53.5401

Deuteranomaly

59.9454, 58.5778, 51.8632

Tritanomaly

61.8733, 58.4029, 60.2364

Monochromacy



Original Color

60.0436, 58.2991, 51.8043

Achromatopsia

56.7640, 59.7202, 65.0353

Achromatomaly

57.7143, 58.9331, 59.9631

CSS Examples

Text

The CSS property to change the color of the text to XYZ 60.0436, 58.2991, 51.8043 is called "color". The color property can be set on classes, ids or directly on the HTML element.

This example shows how text in the color `rgb(230, 193, 181)` looks like.

```
.text, #text, p{  
    color:rgb(230, 193, 181)  
}
```

If you want to add a text shadow in that color use the text-shadow property, you can generate a text shadow directly with our [CSS Text Shadow Generator](#).

Here you see how black text with a 4 pixel rgb(230, 193, 181) colored shadow looks like.

```
.shadow{ text-shadow: 4px 4px 2px rgb(230, 193, 181) }
```

Border

The CSS property to change the border of an element to XYZ 60.0436, 58.2991, 51.8043 is called "border". The border property can be set on classes, ids or directly on the HTML element.

This example shows the color as border, it can be applied via the CSS property "border" or "border-color".

```
.border, #border, table{ border:4px solid rgb(230, 193, 181) }
```


If only the border color should be changed use the property `border-color`.

```
.border{ border-color:rgb(230, 193, 181) }
```

If you want to add a box shadow in that color use:

Here you see how a box with a 4 pixel `rgb(230, 193, 181)` colored shadow looks like.

```
.boxshadow{ -moz-box-shadow:4px 4px 4px  
4px rgb(230, 193, 181); -webkit-box-  
shadow:4px 4px 4px 4px rgb(230, 193, 181);  
box-shadow:4px 4px 4px 4px rgb(230, 193,  
181) }
```

Background

The CSS property to change the background color of an element to XYZ 60.0436, 58.2991, 51.8043 is called "background". The background property can be set on classes, ids or directly on the HTML element.

```
.background, #background, body{  
background: rgb(230, 193, 181) }
```

If only the background color should be changed can be used:

```
.background{ background-color: rgb(230,  
193, 181) }
```

This example shows the color as background, it is applied via the CSS property "background".

To optimize and compress your CSS code, you can use our [online CSS compressor and optimizer](#) based on csstidy. If you want to create a linear or radial gradient as background or border, check our [CSS Gradient Generator](#).

Hey! You found this booklet interesting? Support Converting Colors with the new Membership Option!

The pro membership hides all ads, plus gives you double the colors in the color bucket, and more awesome pro features!

[Learn more, Memberships starting at \\$2.50/m!](#)

**Follow me
on Twitter!**

@ConvertingColor