

Converting Colors

XYZ(59.9944, 60.1913, 62.0690)

Have a look what the booklet for
XYZ(59.9944, 60.1913, 62.0690)
contains.

XYZ(59.8299, 59.9841, 61.8508)	3
<i>Conversions</i>	4
<i>Details</i>	6
<i>Harmonies</i>	12
<i>Previews</i>	24
<i>Color Blindness Simulation</i>	28
<i>CSS Examples</i>	31

Color

**XYZ(59.8299, 59.9841,
61.8508)**

Conversions

Conversions Part 1

Format	Color
Hex	DBC7C6
RGB	219, 199, 198
RGB Percent	86%, 78%, 78%
CMY	0.1412, 0.2196, 0.2235
CMYK	0.00, 0.09, 0.10, 0.14
HSL	3°, 23%, 82%
HSV	3°, 10%, 86%
XYZ	59.8299, 59.9841, 61.8508
YIQ	204.8660, 12.2410, 3.9290

Conversions

Conversions Part 2

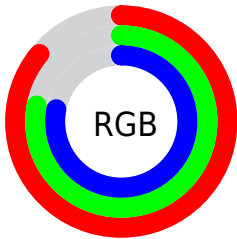
Format	Color
R_{YB}	219, 199, 198
Decimal	14403526
CIE _{Lab}	81.83, 6.83, 3.03
CIE _{LCh}	82, 7.477, 23.943
Yxy	59.9841, 0.3293, 0.3302
Android (android.graphics.Color)	4292593606 (0xFFDBC7C6)
YUV	204.8660, -3.3849, 12.3955
Hunter-Lab	77.4494, 2.3553, 6.8658

Details

The XYZ color **59.8299, 59.9841, 61.8508** is a light color, and the websafe version is hex **CCCCCC**. A complement of this color would be **61.1461, 67.2620, 76.7787**, and the grayscale version is **57.9599, 60.9784, 66.4054**.

A 20% lighter version of the original color is **95.0500, 100.0000, 108.9000**, and **30.4693, 30.1569, 30.6005** is the 20% darker color. If you saturate the color by 10%, you get **53.0109, 50.1001, 48.0032**, and if you desaturate by 10%, it is **67.6751, 71.3345, 77.8439**.

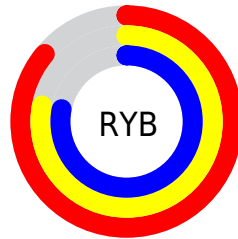
Distribution



Red (86%)

Green (78%)

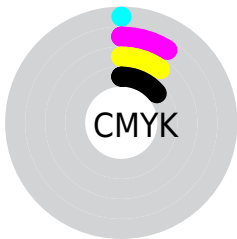
Blue (78%)



Red (86%)

Yellow (78%)

Blue (78%)

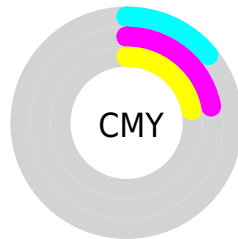


Cyan (0%)

Magenta (9%)

Yellow (10%)

Black (14%)



Cyan (14%)

Magenta (22%)

Yellow (22%)

Brightness & Saturation Gradients

These gradients show how the XYZ color 59.8299, 59.9841, 61.8508 changes by changing the brightness by 10 percent. The first figure shows a shift by +10% for each color and the second figure -10%.

Similar to the brightness gradients but the following saturation gradients show a change of the XYZ color 59.8299, 59.9841, 61.8508 by changing the saturation by 10% instead.

■ 59.8299, 59.9841,
61.8508

■ 59.8299, 59.9841,
61.8508

413.8153,
424.5392, 449.3793

■ 43.5305, 43.4058,
44.4771

103.6906,
104.8066, 109.0794

■ 30.4979, 30.2037,
30.7058

131.9826,
133.8196, 139.7714

■ 20.3667, 19.9932,
20.1184

165.0029,
167.7463, 175.7399

■ 12.7717, 12.3901,
12.2962

203.1168,
206.9711, 217.4035

■ 7.3475, 7.0099,
6.8207

246.6896,
251.8784, 265.1807

■ 3.7286, 3.4683,
3.2735

296.0867,

■ 1.5498, 1.3808,

302.8526, 319.4900

1.2359

351.6735,
360.2780, 380.7500

■ 0.3593, 0.2025,
0.0084

■ 0.0000, 0.0000,
0.0000

■ 59.8299, 59.9841,
61.8508

■ 59.8299, 59.9841,
61.8508

■ 53.0109, 50.1001,
48.0032

■ 67.6751, 71.3345,
77.8439

■ 47.1708, 41.6151,
36.2061

■ 76.5811, 84.1993,
96.0641

■ 42.2662, 34.4684,
26.3634

■ 83.0238, 93.8002,
108.3372

■ 38.2485, 28.5916,
18.3694

■ 35.0647, 23.9105,
12.1087

■ 32.6560, 20.3429,
7.4530

■ 30.9562, 17.7965,
4.2560

■ 29.8877, 16.1640,
2.3449

■ 29.3421, 15.3091,
1.4343

Harmonies

Analogous

The Analogous color harmony consists of three colors that are next to each other on the color wheel.



60.0823, 59.9841, 66.2332



59.8299, 59.9841, 61.8508



58.8167, 59.9841, 58.5397

Triad

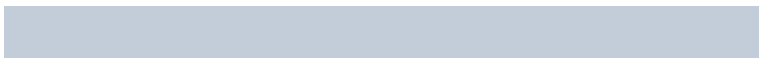
The Triadic color harmony groups three colors that are evenly spaced from another and form a triangle on the color wheel.



59.8299, 59.9841, 61.8508



54.5964, 59.9841, 60.3327



56.6937, 59.9841, 74.3355

Complementary

The Complementary color scheme is a pair of colors which are on the opposite of each other on the color wheel.



59.8299, 59.9841, 61.8508



61.1461, 67.2620, 76.7787

Split Complementary

Split-complementary colors differ from the complementary color scheme. The scheme consists of three colors, the original color and two neighbors of the complement color.



55.2467, 59.9841, 72.5885



59.8299, 59.9841, 61.8508



54.0503, 59.9841, 64.4004

Square

The Square scheme is like the rectangle color scheme, but the four colors are evenly spaced on the color wheel.



59.8299, 59.9841, 61.8508



55.7912, 59.9841, 57.6919



54.2861, 59.9841, 68.9010



58.2527, 59.9841, 73.5762

Rectangle

The Rectangle color scheme consists of four colors that form a rectangle on the color wheel.



59.8299, 59.9841, 61.8508



57.8560, 59.9841, 57.3166



54.2861, 59.9841, 68.9010



56.1784, 59.9841, 74.0194

Sweetspot

The Sweet Spot groups the original color and five complimentary colors.



59.8316, 59.9867, 61.8521



91.5626, 94.9571, 101.7818



62.1025, 60.5268, 74.9462



19.4036, 20.0433, 21.3886



0.0000, 0.0000, 0.0000



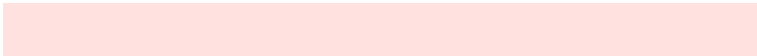
20.3446, 21.4041, 23.3091

Same Dimension

The Same Dimension uses a secret algorithm to generate beautiful new colors.



59.8316, 59.9867, 61.8521



81.9079, 80.9816, 82.1198



62.2568, 64.8373, 62.6605



13.1057, 13.1508, 13.5732



17.4121, 9.1098, 0.8407



1.1460, 0.6261, 0.0605

Inverse Universe

The Inverse Universe completely reimagines the original color for something new.



61.1461, 67.2620, 76.7787



84.2098, 93.7217, 108.2595



58.5829, 62.1354, 75.9243



13.3888, 14.7173, 16.7872



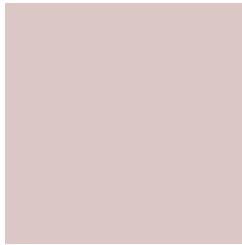
21.0570, 29.9834, 44.4160



1.3809, 1.9760, 2.8831

Previews

White Background



This preview shows how the XYZ color 59.8299, 59.9841, 61.8508 looks on a white background.

Color Contrast Check

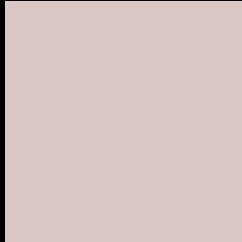
Large Text (above 18pt) WCAG AA × Fail

Any Text WCAG AA × Fail

Large Text (above 18pt) WCAG AAA × Fail

Any Text WCAG AAA × Fail

Black Background



This preview shows how the XYZ color 59.8299, 59.9841, 61.8508 looks on a black background.

Color Contrast Check

Large Text (above 18pt) WCAG AA ✓ Pass

Any Text WCAG AA ✓ Pass

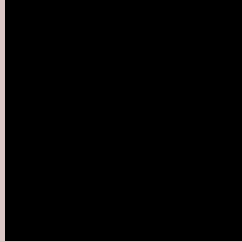
Large Text (above 18pt) WCAG AAA ✓ Pass

Any Text WCAG AAA ✓ Pass

If you want to check with other color combinations, try the [Color Contrast Checker](#).

XYZ 59.8299, 59.9841, 61.8508

Background



This preview shows how black text looks on a background with the XYZ color 59.8299, 59.9841, 61.8508.



This preview shows how white text looks on a background with the XYZ color 59.8299, 59.9841,

Color Blindness Simulation

Color vision deficiency is a very complex topic, and I could not describe the different causes any better than Wikipedia does, so if you want to learn more, you should check out their [article about color blindness](#).

Dichromacy



Original Color

59.8299, 59.9841, 61.8508

Protanopia

57.7937, 60.2919, 63.2350

Deuteranopia

61.2106, 60.0173, 61.7844



Tritanopia

61.6687, 60.0581, 70.6294

Trichromacy



Original Color

59.8299, 59.9841, 61.8508

Protanomaly

58.5807, 60.3616, 62.5963

Deuteranomaly

60.8186, 60.1534, 61.8314

Tritanomaly

60.9718, 60.1088, 67.4201

Monochromacy



Original Color

59.8299, 59.9841, 61.8508

Achromatopsia

58.0276, 61.0496, 66.4830

Achromatomaly

58.5949, 60.6778, 64.5008

CSS Examples

Text

The CSS property to change the color of the text to XYZ 59.8299, 59.9841, 61.8508 is called "color". The color property can be set on classes, ids or directly on the HTML element.

This example shows how text in the color `rgb(219, 199, 198)` looks like.

```
.text, #text, p{  
    color:rgb(219, 199, 198)  
}
```

If you want to add a text shadow in that color use the text-shadow property, you can generate a text shadow directly with our [CSS Text Shadow Generator](#).

Here you see how black text with a 4 pixel rgb(219, 199, 198) colored shadow looks like.

```
.shadow{ text-shadow: 4px 4px 2px rgb(219, 199, 198) }
```

Border

The CSS property to change the border of an element to XYZ 59.8299, 59.9841, 61.8508 is called "border". The border property can be set on classes, ids or directly on the HTML element.

This example shows the color as border, it can be applied via the CSS property "border" or "border-color".

```
.border, #border, table{ border:4px solid rgb(219, 199, 198) }
```


If only the border color should be changed use the property `border-color`.

```
.border{ border-color:rgb(219, 199, 198) }
```

If you want to add a box shadow in that color use:

Here you see how a box with a 4 pixel `rgb(219, 199, 198)` colored shadow looks like.

```
.boxshadow{ -moz-box-shadow:4px 4px 4px  
4px rgb(219, 199, 198); -webkit-box-  
shadow:4px 4px 4px 4px rgb(219, 199, 198);  
box-shadow:4px 4px 4px 4px rgb(219, 199,  
198) }
```

Background

The CSS property to change the background color of an element to XYZ 59.8299, 59.9841, 61.8508 is called "background". The background property can be set on classes, ids or directly on the HTML element.

```
.background, #background, body{  
background: rgb(219, 199, 198) }
```

If only the background color should be changed can be used:

```
.background{ background-color: rgb(219,  
199, 198) }
```

This example shows the color as background, it is applied via the CSS property "background".

To optimize and compress your CSS code, you can use our [online CSS compressor and optimizer](#) based on csstidy. If you want to create a linear or radial gradient as background or border, check our [CSS Gradient Generator](#).

Hey! You found this booklet interesting? Support Converting Colors with the new Membership Option!

The pro membership hides all ads, plus gives you double the colors in the color bucket, and more awesome pro features!

[Learn more, Memberships starting at \\$2.50/m!](#)

**Follow me
on Twitter!**

@ConvertingColor