

Converting Colors

XYZ(60.0123, 58.5665, 60.2984)

Have a look what the booklet for
XYZ(60.0123, 58.5665, 60.2984)
contains.

XYZ(59.9961, 58.4164, 60.3379)	3
<i>Conversions</i>	4
<i>Details</i>	6
<i>Harmonies</i>	12
<i>Previews</i>	24
<i>Color Blindness Simulation</i>	28
<i>CSS Examples</i>	31

Color

**XYZ(59.9961, 58.4164,
60.3379)**

Conversions

Conversions Part 1

Format	Color
Hex	E0C2C4
RGB	224, 194, 196
RGB Percent	88%, 76%, 77%
CMY	0.1216, 0.2392, 0.2314
CMYK	0.00, 0.13, 0.12, 0.12
HSL	356°, 33%, 82%
HSV	356°, 13%, 88%
XYZ	59.9961, 58.4164, 60.3379
YIQ	203.1980, 17.2380, 6.9820

Conversions

Conversions Part 2

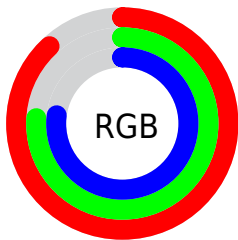
Format	Color
R_{YB}	224, 194, 196
Decimal	14729924
CIE _{Lab}	80.97, 10.94, 2.91
CIE _{LCh}	81, 11.317, 14.918
Yxy	58.4164, 0.3356, 0.3268
Android (android.graphics.Color)	4292920004 (0xFFE0C2C4)
YUV	203.1980, -3.5486, 18.2434
Hunter-Lab	76.4306, 6.3644, 6.6951

Details

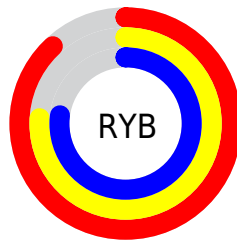
The XYZ color **59.9961, 58.4164, 60.3379** is a light color, and the websafe version is hex **FFCCCC**. A complement of this color would be **62.0909, 70.0561, 79.3604**, and the grayscale version is **56.9045, 59.8680, 65.1962**.

A 20% lighter version of the original color is **93.4668, 97.3462, 106.7920**, and **30.6228, 29.1442, 29.6026** is the 20% darker color. If you saturate the color by 10%, you get **53.1652, 48.3012, 47.1257**, and if you desaturate by 10%, it is **67.9135, 70.1723, 75.5501**.

Distribution



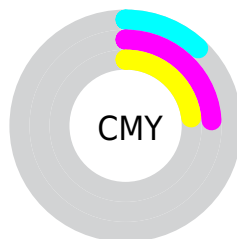
- Red (88%)
- Green (76%)
- Blue (77%)



- Red (88%)
- Yellow (76%)
- Blue (77%)



- Cyan (0%)
- Magenta (13%)
- Yellow (12%)
- Black (12%)





- Cyan (12%)
- Magenta (24%)
- Yellow (23%)

Brightness & Saturation Gradients


These gradients show how the XYZ color 59.9961, 58.4164, 60.3379 changes by changing the brightness by 10 percent. The first figure shows a shift by +10% for each color and the second figure -10%.


Similar to the brightness gradients but the following saturation gradients show a change of the XYZ color 59.9961, 58.4164, 60.3379 by changing the saturation by 10% instead.


 59.9961, 58.4164,
60.3379

 59.9961, 58.4164,
60.3379


414.4184,
418.7357, 443.6813

 43.6649, 42.1435,
43.2640


 103.9304,
102.5290, 106.8678

 30.6040, 29.2137,
29.7594


132.2642,
131.1375, 137.1609

 20.4478, 19.2425,
19.4055

165.3297,
164.6266, 172.6975

 12.8311, 11.8456,
11.7839

203.4921,
203.3808, 213.8961

 7.3886, 6.6387,
6.4759

247.1168,
247.7844, 261.1752

 3.7547, 3.2372,
3.0632

296.5692,

 1.5643, 1.2568,

298.2218, 314.9534

1.1270

352.2146,
355.0775, 375.6493

■ 0.3690, 0.1074,
0.0000

■ 0.0000, 0.0000,
0.0000

■ 59.9961, 58.4164,
60.3379

■ 59.9961, 58.4164,
60.3379

■ 53.1652, 48.3012,
47.1257

■ 67.9135, 70.1723,
75.5501

■ 47.3687, 39.7465,
35.8268

■ 76.9566, 83.6292,
92.8367

■ 42.5575, 32.6769,
26.3535

■ 84.5508, 94.5875,
108.4086

■ 38.6769, 27.0078,
18.6100

■ 35.6664, 22.6460,
12.4917

■ 33.4588, 19.4870,
7.8827

■ 31.9766, 17.4105,
4.6517

■ 31.1272, 16.2710,
2.6447

■ 30.8263, 15.8817,
1.8892

Harmonies

Analogous

The Analogous color harmony consists of three colors that are next to each other on the color wheel.



59.9926, 58.4164, 67.0259



59.9961, 58.4164, 60.3379



58.7783, 58.4164, 54.9142

Triad

The Triadic color harmony groups three colors that are evenly spaced from another and form a triangle on the color wheel.



59.9961, 58.4164, 60.3379



52.3990, 58.4164, 54.8906



54.3578, 58.4164, 76.9100

Complementary

The Complementary color scheme is a pair of colors which are on the opposite of each other on the color wheel.



59.9961, 58.4164, 60.3379



62.0909, 70.0561, 79.3604

Split Complementary

Split-complementary colors differ from the complementary color scheme. The scheme consists of three colors, the original color and two neighbors of the complement color.



52.3902, 58.4164, 73.1687



59.9961, 58.4164, 60.3379



51.2812, 58.4164, 60.3036

Square

The Square scheme is like the rectangle color scheme, but the four colors are evenly spaced on the color wheel.



59.9961, 58.4164, 60.3379



54.3700, 58.4164, 51.9230



51.2780, 58.4164, 66.9891



56.6922, 58.4164, 76.9208

Rectangle

The Rectangle color scheme consists of four colors that form a rectangle on the color wheel.



59.9961, 58.4164, 60.3379



57.4569, 58.4164, 52.6096



51.2780, 58.4164, 66.9891



53.6330, 58.4164, 76.0359

Sweetspot

The Sweet Spot groups the original color and five complimentary colors.



59.9977, 58.4190, 60.3391



90.3866, 93.0657, 99.9695



62.8723, 59.4976, 78.6922



19.1646, 19.6497, 21.0489



0.0000, 0.0000, 0.0000



20.3446, 21.4041, 23.3091

Same Dimension

The Same Dimension uses a secret algorithm to generate beautiful new colors.



59.9977, 58.4190, 60.3391



77.8505, 74.4598, 75.8567



62.7927, 64.3701, 60.1572



13.7440, 13.7152, 14.4223



17.9578, 9.2501, 1.1775



1.2579, 0.6464, 0.1511

Inverse Universe

The Inverse Universe completely reimagines the original color for something new.



59.9977, 58.4190, 60.3391



77.8505, 74.4598, 75.8567



58.9992, 63.4419, 79.6577



13.7440, 13.7152, 14.4223



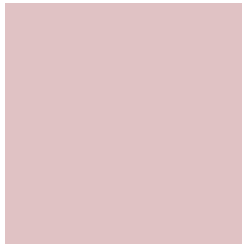
17.9578, 9.2501, 1.1775



1.2579, 0.6464, 0.1511

Previews

White Background



This preview shows how the XYZ color 59.9961, 58.4164, 60.3379 looks on a white background.

Color Contrast Check

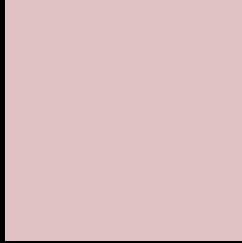
Large Text (above 18pt) WCAG AA × Fail

Any Text WCAG AA × Fail

Large Text (above 18pt) WCAG AAA × Fail

Any Text WCAG AAA × Fail

Black Background



This preview shows how the XYZ color 59.9961, 58.4164, 60.3379 looks on a black background.

Color Contrast Check

Large Text (above 18pt) WCAG AA ✓ Pass

Any Text WCAG AA ✓ Pass

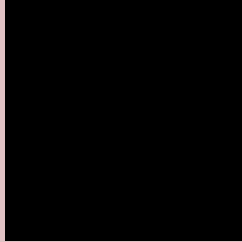
Large Text (above 18pt) WCAG AAA ✓ Pass

Any Text WCAG AAA ✓ Pass

If you want to check with other color combinations, try the [Color Contrast Checker](#).

XYZ 59.9961, 58.4164, 60.3379

Background



This preview shows how black text looks on a background with the XYZ color 59.9961, 58.4164, 60.3379.



This preview shows how white text looks on a background with the XYZ color 59.9961, 58.4164,

Color Blindness Simulation

Color vision deficiency is a very complex topic, and I could not describe the different causes any better than Wikipedia does, so if you want to learn more, you should check out their [article about color blindness](#).

Dichromacy



Original Color

59.9961, 58.4164, 60.3379

Protanopia

56.2564, 58.4578, 62.9620

Deuteranopia

59.9103, 58.7037, 60.3979



Tritanopia

61.1635, 58.2118, 67.0438

Trichromacy



Original Color

59.9961, 58.4164, 60.3379

Protanomaly

57.6543, 58.5087, 62.2874

Deuteranomaly

59.9103, 58.7037, 60.3979

Tritanomaly

60.9008, 58.4593, 64.5739

Monochromacy



Original Color

59.9961, 58.4164, 60.3379

Achromatopsia

56.7640, 59.7202, 65.0353

Achromatomaly

57.9436, 59.3276, 63.0410

CSS Examples

Text

The CSS property to change the color of the text to XYZ 59.9961, 58.4164, 60.3379 is called "color". The color property can be set on classes, ids or directly on the HTML element.

This example shows how text in the color `rgb(224, 194, 196)` looks like.

```
.text, #text, p{  
    color:rgb(224, 194, 196)  
}
```

If you want to add a text shadow in that color use the text-shadow property, you can generate a text shadow directly with our [CSS Text Shadow Generator](#).

Here you see how black text with a 4 pixel rgb(224, 194, 196) colored shadow looks like.

```
.shadow{ text-shadow: 4px 4px 2px rgb(224, 194, 196) }
```

Border

The CSS property to change the border of an element to XYZ 59.9961, 58.4164, 60.3379 is called "border". The border property can be set on classes, ids or directly on the HTML element.

This example shows the color as border, it can be applied via the CSS property "border" or "border-color".

```
.border, #border, table{ border:4px solid rgb(224, 194, 196) }
```


If only the border color should be changed use the property border-color.

```
.border{ border-color:rgb(224, 194, 196) }
```

If you want to add a box shadow in that color use:

Here you see how a box with a 4 pixel rgb(224, 194, 196) colored shadow looks like.

```
.boxshadow{ -moz-box-shadow:4px 4px 4px  
4px rgb(224, 194, 196); -webkit-box-  
shadow:4px 4px 4px 4px rgb(224, 194, 196);  
box-shadow:4px 4px 4px 4px rgb(224, 194,  
196) }
```

Background

The CSS property to change the background color of an element to XYZ 59.9961, 58.4164, 60.3379 is called "background". The background property can be set on classes, ids or directly on the HTML element.

```
.background, #background, body{  
background: rgb(224, 194, 196) }
```

If only the background color should be changed can be used:

```
.background{ background-color: rgb(224,  
194, 196) }
```

This example shows the color as background, it is applied via the CSS property "background".

To optimize and compress your CSS code, you can use our [online CSS compressor and optimizer](#) based on csstidy. If you want to create a linear or radial gradient as background or border, check our [CSS Gradient Generator](#).

Hey! You found this booklet interesting? Support Converting Colors with the new Membership Option!

The pro membership hides all ads, plus gives you double the colors in the color bucket, and more awesome pro features!

[Learn more, Memberships starting at \\$2.50/m!](#)

**Follow me
on Twitter!**

@ConvertingColor