

# Converting Colors

XYZ(60.0284, 60.0307, 52.7567)

Have a look what the booklet for  
XYZ(60.0284, 60.0307, 52.7567)  
contains.

<b>XYZ(60.0016, 59.9343, 52.6620)</b> .....	3
<b><i>Conversions</i></b> .....	4
<b><i>Details</i></b> .....	6
<b><i>Harmonies</i></b> .....	12
<b><i>Previews</i></b> .....	24
<b><i>Color Blindness Simulation</i></b> .....	28
<b><i>CSS Examples</i></b> .....	31

# Color

**XYZ(60.0016, 59.9343,  
52.6620)**

# Conversions

## Conversions Part 1

<b>Format</b>	<b>Color</b>
Hex	E2C6B6
RGB	226, 198, 182
RGB Percent	89%, 78%, 71%
CMY	0.1137, 0.2235, 0.2863
CMYK	0.00, 0.12, 0.19, 0.11
HSL	22°, 43%, 80%
HSV	22°, 19%, 89%
XYZ	60.0016, 59.9343, 52.6620
YIQ	204.5480, 21.8240, 0.9600

# Conversions

## Conversions Part 2

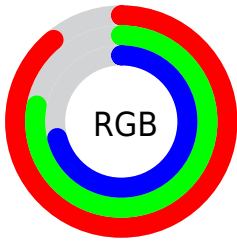
<b>Format</b>	<b>Color</b>
<b>R<sub>YB</sub></b>	226, 207, 182
Decimal	14862006
CIE <sub>Lab</sub>	81.80, 7.36, 11.63
CIE <sub>LCh</sub>	82, 13.766, 57.682
Yxy	59.9343, 0.3476, 0.3472
Android (android.graphics.Color)	4293052086 (0xFFE2C6B6)
YUV	204.5480, -11.1162, 18.8134
Hunter-Lab	77.4172, 2.8648, 13.8609

# Details

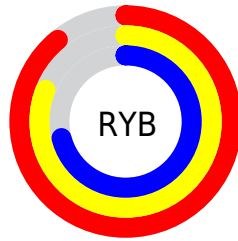
The XYZ color **60.0016, 59.9343, 52.6620** is a light color, and the websafe version is hex **FFCCCC**. A complement of this color would be **56.0650, 61.5278, 80.8730**, and the grayscale version is **57.8012, 60.8114, 66.2236**.

A 20% lighter version of the original color is **92.4326, 98.9530, 95.1170**, and **30.5133, 30.0775, 24.9662** is the 20% darker color. If you saturate the color by 10%, you get **54.7200, 52.8118, 40.2935**, and if you desaturate by 10%, it is **65.9755, 67.8372, 67.1223**.

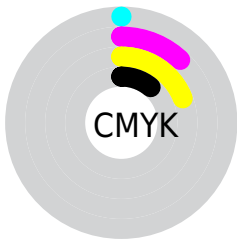
# Distribution



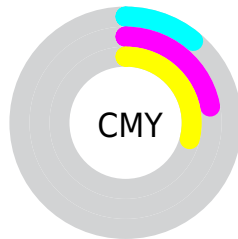
- Red (89%)
- Green (78%)
- Blue (71%)



- Red (89%)
- Yellow (81%)
- Blue (71%)



- Cyan (0%)
- Magenta (12%)
- Yellow (19%)
- Black (11%)




- Cyan (11%)
- Magenta (22%)
- Yellow (29%)


# Brightness & Saturation Gradients

These gradients show how the XYZ color 60.0016, 59.9343, 52.6620 changes by changing the brightness by 10 percent. The first figure shows a shift by +10% for each color and the second figure -10%.


Similar to the brightness gradients but the following saturation gradients show a change of the XYZ color 60.0016, 59.9343, 52.6620 by changing the saturation by 10% instead.




 60.0016, 59.9343,  
52.6620

 60.0016, 59.9343,  
52.6620


414.4383,  
424.3556, 414.0165

 43.6694, 43.3657,  
37.1471


 103.9383,  
104.7344, 95.5433

 30.6075, 30.1721,  
25.0248


132.2735,  
133.7346, 123.7469

 20.4505, 19.9693,  
15.8763


165.3405,  
167.6475, 157.0170

 12.8331, 12.3727,  
9.2833

203.5045,  
206.8574, 195.7724

 7.3899, 6.9980,  
4.8271

247.1309,  
251.7488, 240.4315

 3.7556, 3.4609,  
2.0892

296.5851,

 1.5648, 1.3768,

302.7060, 291.4128

0.6093

352.2325,  
360.1135, 349.1350

■ 0.3693, 0.1995,  
0.0000

■ 0.0000, 0.0000,  
0.0000

■ 60.0016, 59.9343,  
52.6620

■ 60.0016, 59.9343,  
52.6620

■ 54.7200, 52.8118,  
40.2935

■ 65.9755, 67.8372,  
67.1223

■ 50.0992, 46.4370,  
29.9150

■ 72.6620, 76.5356,  
83.7622

■ 46.1121, 40.7867,  
21.4220

■ 80.0865, 86.0546,  
102.6687

■ 42.7280, 35.8334,  
14.6986

■ 85.1742, 94.9088,  
108.4378

■ 39.9130, 31.5477,  
9.6161

■ 37.6295, 27.8977,  
6.0279

■ 35.8340, 24.8479,  
3.7608

■ 34.4617, 22.3532,  
2.5328

■ 34.3970, 22.2343,  
2.4787

# Harmonies

## Analogous

The Analogous color harmony consists of three colors that are next to each other on the color wheel.



62.0519, 59.9343, 58.1114



60.0016, 59.9343, 52.6620



57.1917, 59.9343, 50.5561

# Triad

The Triadic color harmony groups three colors that are evenly spaced from another and form a triangle on the color wheel.



60.0016, 59.9343, 52.6620



51.5697, 59.9343, 64.6141



59.5979, 59.9343, 80.4591

# Complementary

The Complementary color scheme is a pair of colors which are on the opposite of each other on the color wheel.



60.0016, 59.9343, 52.6620



56.0650, 61.5278, 80.8730

# Split Complementary

Split-complementary colors differ from the complementary color scheme. The scheme consists of three colors, the original color and two neighbors of the complement color.



56.7404, 59.9343, 82.5656



60.0016, 59.9343, 52.6620



52.1655, 59.9343, 72.9683

# Square

The Square scheme is like the rectangle color scheme, but the four colors are evenly spaced on the color wheel.



60.0016, 59.9343, 52.6620



52.3786, 59.9343, 57.0813



54.0341, 59.9343, 79.7182



61.8132, 59.9343, 74.1810



# Rectangle

The Rectangle color scheme consists of four colors that form a rectangle on the color wheel.



60.0016, 59.9343, 52.6620



55.2875, 59.9343, 51.1846



54.0341, 59.9343, 79.7182



58.6777, 59.9343, 81.7007

# Sweetspot

The Sweet Spot groups the original color and five complimentary colors.



60.0032, 59.9370, 52.6633



89.6563, 92.9988, 95.4298



59.8004, 54.3085, 68.6968



19.0690, 19.7475, 20.1258



0.0000, 0.0000, 0.0000



20.3446, 21.4041, 23.3091



# Same Dimension

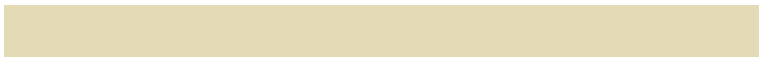
The Same Dimension uses a secret algorithm to generate beautiful new colors.



60.0032, 59.9370, 52.6633



76.2330, 75.2401, 62.9385



65.2441, 70.4187, 54.4102



14.1134, 14.5127, 14.3642



19.7265, 12.8910, 1.4485



1.4505, 1.0599, 0.1281

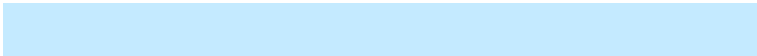


# Inverse Universe

The Inverse Universe completely reimagines the original color for something new.



56.0650, 61.5278, 80.8730



70.2342, 77.6589, 105.8957



51.1313, 51.6602, 79.2284



13.6755, 14.6901, 17.5024



13.6203, 14.7101, 43.1698

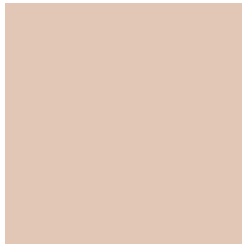


1.0283, 1.1881, 3.0204



# Previews

## White Background



This preview shows how the XYZ color 60.0016, 59.9343, 52.6620 looks on a white background.

## Color Contrast Check

Large Text (above 18pt) WCAG AA × Fail

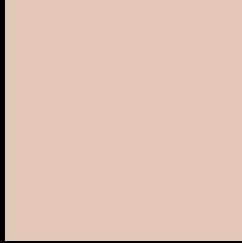
Any Text WCAG AA × Fail

Large Text (above 18pt) WCAG AAA × Fail

Any Text WCAG AAA × Fail



# Black Background



This preview shows how the XYZ color 60.0016, 59.9343, 52.6620 looks on a black background.

## Color Contrast Check

Large Text (above 18pt) WCAG AA ✓ Pass

Any Text WCAG AA ✓ Pass

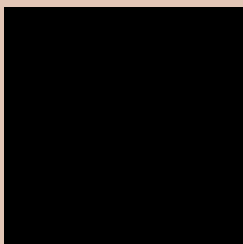
Large Text (above 18pt) WCAG AAA ✓ Pass

Any Text WCAG AAA ✓ Pass

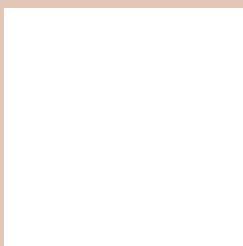
If you want to check with other color combinations, try the [Color Contrast Checker](#).

**XYZ 60.0016, 59.9343, 52.6620**

## **Background**



This preview shows how black text looks on a background with the XYZ color 60.0016, 59.9343, 52.6620.



This preview shows how white text looks on a background with the XYZ color 60.0016, 59.9343,



# Color Blindness Simulation

Color vision deficiency is a very complex topic, and I could not describe the different causes any better than Wikipedia does, so if you want to learn more, you should check out their [article about color blindness](#).

## Dichromacy



### Original Color

60.0016, 59.9343, 52.6620

### Protanopia

57.2643, 60.2117, 54.5028

### Deuteranopia

61.1384, 59.8462, 52.5851



## Tritanopia

63.1135, 59.8450, 68.5464

# Trichromacy



**Original Color**

60.0016, 59.9343, 52.6620

**Protanomaly**

58.1536, 59.9857, 53.8608

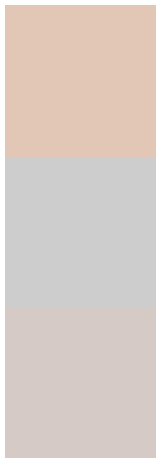
**Deuteranomaly**

60.7228, 59.9679, 52.6305

**Tritanomaly**

61.8188, 59.6477, 62.2878

# Monochromacy



**Original Color**

60.0016, 59.9343, 52.6620

**Achromatopsia**

58.0276, 61.0496, 66.4830

**Achromatomaly**

58.6391, 60.4184, 61.3946

# CSS Examples

## Text

The CSS property to change the color of the text to XYZ 60.0016, 59.9343, 52.6620 is called "color". The color property can be set on classes, ids or directly on the HTML element.

This example shows how text in the color `rgb(226, 198, 182)` looks like.

```
.text, #text, p{  
    color:rgb(226, 198, 182)  
}
```

If you want to add a text shadow in that color use the text-shadow property, you can generate a text shadow directly with our [CSS Text Shadow Generator](#).

Here you see how black text with a 4 pixel rgb(226, 198, 182) colored shadow looks like.

```
.shadow{ text-shadow: 4px 4px 2px rgb(226, 198, 182) }
```

## Border

The CSS property to change the border of an element to XYZ 60.0016, 59.9343, 52.6620 is called "border". The border property can be set on classes, ids or directly on the HTML element.

This example shows the color as border, it can be applied via the CSS property "border" or "border-color".

```
.border, #border, table{ border:4px solid rgb(226, 198, 182) }
```



If only the border color should be changed use the property `border-color`.

```
.border{ border-color:rgb(226, 198, 182) }
```

If you want to add a box shadow in that color use:

Here you see how a box with a 4 pixel `rgb(226, 198, 182)` colored shadow looks like.

```
.boxshadow{ -moz-box-shadow:4px 4px 4px  
4px rgb(226, 198, 182); -webkit-box-  
shadow:4px 4px 4px 4px rgb(226, 198, 182);  
box-shadow:4px 4px 4px 4px rgb(226, 198,  
182) }
```

# Background

The CSS property to change the background color of an element to XYZ 60.0016, 59.9343, 52.6620 is called "background". The background property can be set on classes, ids or directly on the HTML element.

```
.background, #background, body{  
background: rgb(226, 198, 182) }
```

If only the background color should be changed can be used:

```
.background{ background-color: rgb(226,  
198, 182) }
```

This example shows the color as background, it is applied via the CSS property "background".

To optimize and compress your CSS code, you can use our [online CSS compressor and optimizer](#) based on csstidy. If you want to create a linear or radial gradient as background or border, check our [CSS Gradient Generator](#).

Hey! You found this booklet interesting? Support Converting Colors with the new Membership Option!

The pro membership hides all ads, plus gives you double the colors in the color bucket, and more awesome pro features!

**[Learn more, Memberships starting at \\$2.50/m!](#)**

**Follow me  
on Twitter!**

@ConvertingColor