

Converting Colors

XYZ(60.0466, 59.3199, 66.8339)

Have a look what the booklet for
XYZ(60.0466, 59.3199, 66.8339)
contains.

XYZ(60.0203, 59.2942, 66.6740)	3
<i>Conversions</i>	4
<i>Details</i>	6
<i>Harmonies</i>	12
<i>Previews</i>	24
<i>Color Blindness Simulation</i>	28
<i>CSS Examples</i>	31

Color

**XYZ(60.0203, 59.2942,
66.6740)**

Conversions

Conversions Part 1

Format	Color
Hex	DAC5CE
RGB	218, 197, 206
RGB Percent	85%, 77%, 81%
CMY	0.1451, 0.2274, 0.1922
CMYK	0.00, 0.10, 0.06, 0.15
HSL	334°, 22%, 81%
HSV	334°, 10%, 85%
XYZ	60.0203, 59.2942, 66.6740
YIQ	204.3050, 9.6270, 7.2510

Conversions

Conversions Part 2

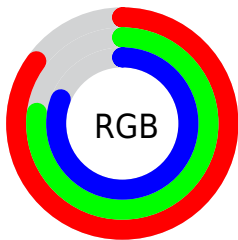
Format	Color
R _Y B	218, 197, 206
Decimal	14337486
CIE Lab	81.45, 8.91, -1.81
CIE LCh	81, 9.093, 348.498
Yxy	59.2942, 0.3227, 0.3188
Android (android.graphics.Color)	4292527566 (0xFFDAC5CE)
YUV	204.3050, 0.8356, 12.0105
Hunter-Lab	77.0027, 4.3783, 2.5647

Details

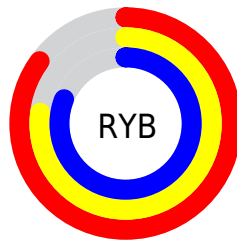
The XYZ color **60.0203, 59.2942, 66.6740** is a light color, and the websafe version is hex **CCCCCC**. A complement of this color would be **59.6083, 66.6182, 70.0419**, and the grayscale version is **57.5795, 60.5781, 65.9695**.

A 20% lighter version of the original color is **94.7318, 99.3636, 108.7939**, and **30.5942, 29.6985, 33.8256** is the 20% darker color. If you saturate the color by 10%, you get **53.9699, 49.5199, 57.4833**, and if you desaturate by 10%, it is **66.9099, 70.5533, 76.7379**.

Distribution



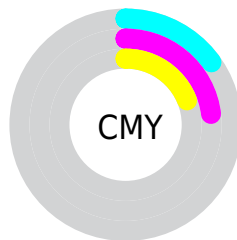
- Red (85%)
- Green (77%)
- Blue (81%)



- Red (85%)
- Yellow (77%)
- Blue (81%)



- Cyan (0%)
- Magenta (10%)
- Yellow (6%)
- Black (15%)



- Cyan (15%)
- Magenta (23%)
- Yellow (19%)

Brightness & Saturation Gradients

These gradients show how the XYZ color 60.0203, 59.2942, 66.6740 changes by changing the brightness by 10 percent. The first figure shows a shift by +10% for each color and the second figure -10%.

Similar to the brightness gradients but the following saturation gradients show a change of the XYZ color 60.0203, 59.2942, 66.6740 by changing the saturation by 10% instead.

60.0203, 59.2942,
66.6740

60.0203, 59.2942,
66.6740

414.5061,
421.9913, 467.2533

43.6845, 42.8500,
48.3598

103.9653,
103.8051, 116.0894

30.6194, 29.7674,
33.7499

132.3052,
132.6406, 148.0276

20.4596, 19.6621,
22.4257

165.3772,
166.3754, 185.3443

12.8398, 12.1497,
13.9688

203.5467,
205.3938, 228.4580

7.3945, 6.8457,
7.9604

247.1790,
250.0801, 277.7872

3.7586, 3.3658,
3.9822

296.6394,

1.5665, 1.3256,

300.8189, 333.7505

1.6156

352.2933,
357.9945, 396.7663

■ 0.3704, 0.1609,
0.3019

■ 0.0000, 0.0000,
0.0000

■ 60.0203, 59.2942,
66.6740

■ 60.0203, 59.2942,
66.6740

■ 53.9699, 49.5199,
57.4833

■ 66.9099, 70.5533,
76.7379

■ 48.7204, 41.1605,
49.1373

■ 74.6650, 83.3479,
87.6948

■ 44.2376, 34.1516,
41.6110

■ 80.9089, 92.9197,
98.7660

■ 40.4833, 28.4212,
34.8771

■ 82.7238, 93.6456,
108.3231

■ 37.4153, 23.8904,
28.9063

■ 34.9873, 20.4713,
23.6669

■ 33.1465, 18.0640,
19.1247

■ 31.8309, 16.5502,
15.2413

■ 30.9369, 15.7288,
11.9635

Harmonies

Analogous

The Analogous color harmony consists of three colors that are next to each other on the color wheel.



59.1430, 59.2942, 71.7589



60.0203, 59.2942, 66.6740



59.8998, 59.2942, 61.2926

Triad

The Triadic color harmony groups three colors that are evenly spaced from another and form a triangle on the color wheel.



60.0203, 59.2942, 66.6740



55.2042, 59.2942, 55.1227



53.9668, 59.2942, 72.7337

Complementary

The Complementary color scheme is a pair of colors which are on the opposite of each other on the color wheel.



60.0203, 59.2942, 66.6740



59.6083, 66.6182, 70.0419

Split Complementary

Split-complementary colors differ from the complementary color scheme. The scheme consists of three colors, the original color and two neighbors of the complement color.



52.9574, 59.2942, 67.9442



60.0203, 59.2942, 66.6740



53.6606, 59.2942, 57.8619

Square

The Square scheme is like the rectangle color scheme, but the four colors are evenly spaced on the color wheel.



60.0203, 59.2942, 66.6740



57.0903, 59.2942, 54.8254



52.8466, 59.2942, 62.4937



55.6307, 59.2942, 75.3866

Rectangle

The Rectangle color scheme consists of four colors that form a rectangle on the color wheel.



60.0203, 59.2942, 66.6740



59.2705, 59.2942, 58.2541



52.8466, 59.2942, 62.4937



53.5413, 59.2942, 71.3081

Sweetspot

The Sweet Spot groups the original color and five complimentary colors.



60.0220, 59.2968, 66.6753



91.9618, 94.9374, 104.4373



58.8895, 58.5381, 74.5257



19.5110, 20.0381, 22.1028



0.0000, 0.0000, 0.0000



20.3446, 21.4041, 23.3091

Same Dimension

The Same Dimension uses a secret algorithm to generate beautiful new colors.



60.0220, 59.2968, 66.6753



83.3641, 80.9309, 91.7403



59.2792, 59.5106, 61.1888



13.2865, 13.1437, 14.7697



18.5682, 9.4283, 7.3722



1.2455, 0.6278, 0.7019

Inverse Universe

The Inverse Universe completely reimagines the original color for something new.



60.0220, 59.2968, 66.6753



83.3641, 80.9309, 91.7403



60.3926, 66.3536, 75.9550



13.2865, 13.1437, 14.7697



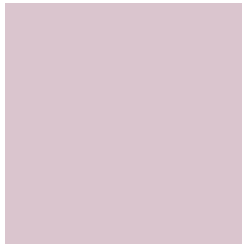
18.5682, 9.4283, 7.3722



1.2455, 0.6278, 0.7019

Previews

White Background



This preview shows how the XYZ color 60.0203, 59.2942, 66.6740 looks on a white background.

Color Contrast Check

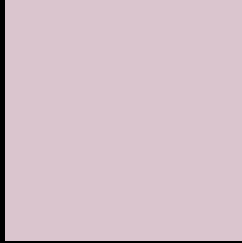
Large Text (above 18pt) WCAG AA × Fail

Any Text WCAG AA × Fail

Large Text (above 18pt) WCAG AAA × Fail

Any Text WCAG AAA × Fail

Black Background



This preview shows how the XYZ color 60.0203, 59.2942, 66.6740 looks on a black background.

Color Contrast Check

Large Text (above 18pt) WCAG AA ✓ Pass

Any Text WCAG AA ✓ Pass

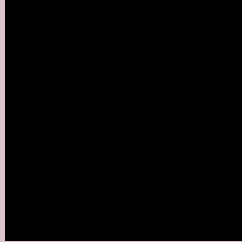
Large Text (above 18pt) WCAG AAA ✓ Pass

Any Text WCAG AAA ✓ Pass

If you want to check with other color combinations, try the [Color Contrast Checker](#).

XYZ 60.0203, 59.2942, 66.6740

Background



This preview shows how black text looks on a background with the XYZ color 60.0203, 59.2942, 66.6740.



This preview shows how white text looks on a background with the XYZ color 60.0203, 59.2942,

Color Blindness Simulation

Color vision deficiency is a very complex topic, and I could not describe the different causes any better than Wikipedia does, so if you want to learn more, you should check out their [article about color blindness](#).

Dichromacy



Original Color

60.0203, 59.2942, 66.6740

Protanopia

57.2971, 59.2141, 68.7312

Deuteranopia

60.3957, 59.1517, 66.6267



Tritanopia

60.8370, 59.2934, 70.5257

Trichromacy



Original Color

60.0203, 59.2942, 66.6740

Protanomaly

58.3339, 59.4179, 68.0688

Deuteranomaly

60.0939, 58.9962, 66.6126

Tritanomaly

60.5862, 59.1931, 69.2049

Monochromacy



Original Color

60.0203, 59.2942, 66.6740

Achromatopsia

57.3938, 60.3827, 65.7568

Achromatomaly

58.2006, 59.7364, 66.2204

CSS Examples

Text

The CSS property to change the color of the text to XYZ 60.0203, 59.2942, 66.6740 is called "color". The color property can be set on classes, ids or directly on the HTML element.

This example shows how text in the color `rgb(218, 197, 206)` looks like.

```
.text, #text, p{  
    color:rgb(218, 197, 206)  
}
```

If you want to add a text shadow in that color use the text-shadow property, you can generate a text shadow directly with our [CSS Text Shadow Generator](#).

Here you see how black text with a 4 pixel rgb(218, 197, 206) colored shadow looks like.

```
.shadow{ text-shadow: 4px 4px 2px rgb(218, 197, 206) }
```

Border

The CSS property to change the border of an element to XYZ 60.0203, 59.2942, 66.6740 is called "border". The border property can be set on classes, ids or directly on the HTML element.

This example shows the color as border, it can be applied via the CSS property "border" or "border-color".

```
.border, #border, table{ border:4px solid rgb(218, 197, 206) }
```


If only the border color should be changed use the property `border-color`.

```
.border{ border-color:rgb(218, 197, 206) }
```

If you want to add a box shadow in that color use:

Here you see how a box with a 4 pixel `rgb(218, 197, 206)` colored shadow looks like.

```
.boxshadow{ -moz-box-shadow:4px 4px 4px  
4px rgb(218, 197, 206); -webkit-box-  
shadow:4px 4px 4px 4px rgb(218, 197, 206);  
box-shadow:4px 4px 4px 4px rgb(218, 197,  
206) }
```

Background

The CSS property to change the background color of an element to XYZ 60.0203, 59.2942, 66.6740 is called "background". The background property can be set on classes, ids or directly on the HTML element.

```
.background, #background, body{  
background: rgb(218, 197, 206) }
```

If only the background color should be changed can be used:

```
.background{ background-color: rgb(218,  
197, 206) }
```

This example shows the color as background, it is applied via the CSS property "background".

To optimize and compress your CSS code, you can use our [online CSS compressor and optimizer](#) based on csstidy. If you want to create a linear or radial gradient as background or border, check our [CSS Gradient Generator](#).

Hey! You found this booklet interesting? Support Converting Colors with the new Membership Option!

The pro membership hides all ads, plus gives you double the colors in the color bucket, and more awesome pro features!

[Learn more, Memberships starting at \\$2.50/m!](#)

**Follow me
on Twitter!**

@ConvertingColor