

Converting Colors

XYZ(60.1248, 60.6635, 60.1694)

Have a look what the booklet for
XYZ(60.1248, 60.6635, 60.1694)
contains.

XYZ(60.0198, 60.4643, 60.1372)	3
<i>Conversions</i>	4
<i>Details</i>	6
<i>Harmonies</i>	12
<i>Previews</i>	24
<i>Color Blindness Simulation</i>	28
<i>CSS Examples</i>	31

Color

**XYZ(60.0198, 60.4643,
60.1372)**

Conversions

Conversions Part 1

Format	Color
Hex	DCC8C3
RGB	220, 200, 195
RGB Percent	86%, 78%, 76%
CMY	0.1373, 0.2157, 0.2353
CMYK	0.00, 0.09, 0.11, 0.14
HSL	12°, 26%, 81%
HSV	12°, 11%, 86%
XYZ	60.0198, 60.4643, 60.1372
YIQ	205.4100, 13.5250, 2.6850

Conversions

Conversions Part 2

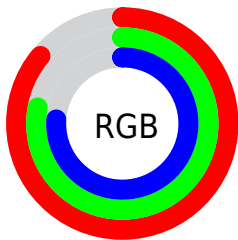
Format	Color
R _Y B	220, 201, 195
Decimal	14469315
CIE Lab	82.09, 6.16, 5.03
CIE LCh	82, 7.954, 39.200
Yxy	60.4643, 0.3323, 0.3348
Android (android.graphics.Color)	4292659395 (0xFFDCC8C3)
YUV	205.4100, -5.1321, 12.7954
Hunter-Lab	77.7588, 1.7012, 8.5774

Details

The XYZ color **60.0198, 60.4643, 60.1372** is a light color, and the websafe version is hex **CCCCCC**. A complement of this color would be **59.7242, 65.3691, 77.1805**, and the grayscale version is **58.3164, 61.3534, 66.8139**.

A 20% lighter version of the original color is **94.5707, 99.8083, 106.3760**, and **30.6037, 30.4802, 29.4696** is the 20% darker color. If you saturate the color by 10%, you get **53.8702, 51.8565, 46.7059**, and if you desaturate by 10%, it is **67.0084, 70.1622, 75.6577**.

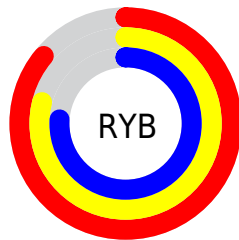
Distribution



Red (86%)

Green (78%)

Blue (76%)



Red (86%)

Yellow (79%)

Blue (76%)

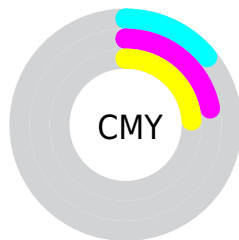


Cyan (0%)

Magenta (9%)

Yellow (11%)

Black (14%)



Cyan (14%)

Magenta (22%)

Yellow (24%)

Brightness & Saturation Gradients

These gradients show how the XYZ color 60.0198, 60.4643, 60.1372 changes by changing the brightness by 10 percent. The first figure shows a shift by +10% for each color and the second figure -10%.

Similar to the brightness gradients but the following saturation gradients show a change of the XYZ color 60.0198, 60.4643, 60.1372 by changing the saturation by 10% instead.

60.0198, 60.4643,
60.1372

60.0198, 60.4643,
60.1372

414.5043,
426.3071, 442.9220

43.6841, 43.7930,
43.1032

103.9646,
105.5029, 106.5740

30.6191, 30.5078,
29.6341

132.3044,
134.6390, 136.8139

20.4594, 20.2243,
19.3113

165.3762,
168.6987, 172.2928

12.8396, 12.5582,
11.7164

203.5456,
208.0666, 213.4293

7.3944, 7.1250,
6.4307

247.1777,
253.1270, 260.6419

3.7585, 3.5404,
3.0357

296.6379,

1.5664, 1.4200,

304.2643, 314.3492

1.1129

352.2917,
361.8628, 374.9697

■ 0.3704, 0.2314,
0.0000

■ 0.0000, 0.0000,
0.0000

■ 60.0198, 60.4643,
60.1372

■ 60.0198, 60.4643,
60.1372

■ 53.8702, 51.8565,
46.7059

■ 67.0084, 70.1622,
75.6577

■ 48.5227, 44.2926,
35.2706

■ 74.8610, 80.9784,
93.3475

■ 43.9452, 37.7352,
25.7368

■ 82.6262, 92.5572,
108.1182

■ 40.1014, 32.1413,
18.0006

■ 83.3255, 93.9558,
108.3513

■ 36.9518, 27.4648,
11.9482

■ 34.4533, 23.6559,
7.4529

■ 32.5576, 20.6597,
4.3696

■ 31.2089, 18.4146,
2.5256

■ 30.4174, 17.0197,
1.6820

Harmonies

Analogous

The Analogous color harmony consists of three colors that are next to each other on the color wheel.



60.7310, 60.4643, 64.3613



60.0198, 60.4643, 60.1372



58.6290, 60.4643, 57.5280

Triad

The Triadic color harmony groups three colors that are evenly spaced from another and form a triangle on the color wheel.



60.0198, 60.4643, 60.1372



54.4905, 60.4643, 62.5916



57.9896, 60.4643, 75.4371

Complementary

The Complementary color scheme is a pair of colors which are on the opposite of each other on the color wheel.



60.0198, 60.4643, 60.1372



59.7242, 65.3691, 77.1805

Split Complementary

Split-complementary colors differ from the complementary color scheme. The scheme consists of three colors, the original color and two neighbors of the complement color.



56.3254, 60.4643, 74.9063



60.0198, 60.4643, 60.1372



54.3269, 60.4643, 67.3317

Square

The Square scheme is like the rectangle color scheme, but the four colors are evenly spaced on the color wheel.



60.0198, 60.4643, 60.1372



55.4438, 60.4643, 58.8961



54.9925, 60.4643, 71.8825



59.5439, 60.4643, 73.2993

Rectangle

The Rectangle color scheme consists of four colors that form a rectangle on the color wheel.



60.0198, 60.4643, 60.1372



57.5148, 60.4643, 56.9772



54.9925, 60.4643, 71.8825



57.4242, 60.4643, 75.5670

Sweetspot

The Sweet Spot groups the original color and five complimentary colors.



60.0215, 60.4670, 60.1385



91.9215, 95.6750, 101.9015



61.2968, 59.1530, 72.4777



19.5000, 20.2361, 21.4208



0.0000, 0.0000, 0.0000



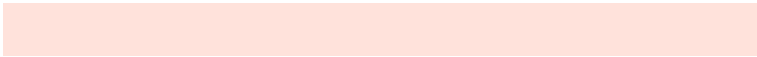
20.3446, 21.4041, 23.3091

Same Dimension

The Same Dimension uses a secret algorithm to generate beautiful new colors.



60.0215, 60.4670, 60.1385



81.3834, 81.0256, 78.5752



63.0349, 66.4939, 61.1430



13.2660, 13.4714, 13.6266



17.9146, 10.1148, 1.0081



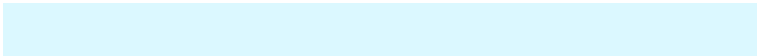
1.2219, 0.7780, 0.0858

Inverse Universe

The Inverse Universe completely reimagines the original color for something new.



59.7242, 65.3691, 77.1805



80.8765, 89.3720, 107.5956



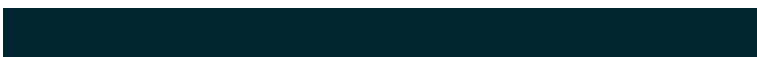
56.6628, 59.2464, 76.1600



13.2120, 14.3637, 16.7283



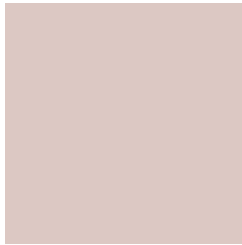
16.7699, 21.4092, 42.9869



1.1438, 1.5018, 2.8040

Previews

White Background



This preview shows how the XYZ color 60.0198, 60.4643, 60.1372 looks on a white background.

Color Contrast Check

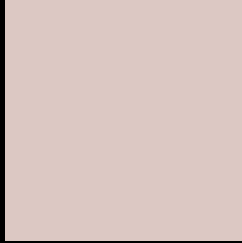
Large Text (above 18pt) WCAG AA × Fail

Any Text WCAG AA × Fail

Large Text (above 18pt) WCAG AAA × Fail

Any Text WCAG AAA × Fail

Black Background



This preview shows how the XYZ color 60.0198, 60.4643, 60.1372 looks on a black background.

Color Contrast Check

Large Text (above 18pt) WCAG AA ✓ Pass

Any Text WCAG AA ✓ Pass

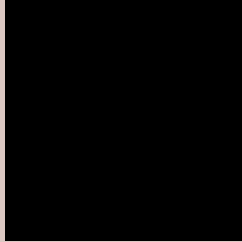
Large Text (above 18pt) WCAG AAA ✓ Pass

Any Text WCAG AAA ✓ Pass

If you want to check with other color combinations, try the [Color Contrast Checker](#).

XYZ 60.0198, 60.4643, 60.1372

Background



This preview shows how black text looks on a background with the XYZ color 60.0198, 60.4643, 60.1372.

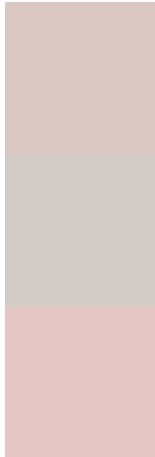


This preview shows how white text looks on a background with the XYZ color 60.0198, 60.4643,

Color Blindness Simulation

Color vision deficiency is a very complex topic, and I could not describe the different causes any better than Wikipedia does, so if you want to learn more, you should check out their [article about color blindness](#).

Dichromacy



Original Color

60.0198, 60.4643, 60.1372

Protanopia

58.0123, 60.4447, 61.4327

Deuteranopia

61.6086, 60.2489, 60.6066



Tritanopia

62.1007, 60.2662, 71.3103

Trichromacy



Original Color

60.0198, 60.4643, 60.1372

Protanomaly

58.8159, 60.5227, 60.8067

Deuteranomaly

60.8984, 60.2210, 60.6387

Tritanomaly

61.1535, 60.2166, 66.7923

Monochromacy



Original Color

60.0198, 60.4643, 60.1372

Achromatopsia

58.0276, 61.0496, 66.4830

Achromatomaly

58.4769, 60.6306, 63.8791

CSS Examples

Text

The CSS property to change the color of the text to XYZ 60.0198, 60.4643, 60.1372 is called "color". The color property can be set on classes, ids or directly on the HTML element.

This example shows how text in the color `rgb(220, 200, 195)` looks like.

```
.text, #text, p{  
    color:rgb(220, 200, 195)  
}
```

If you want to add a text shadow in that color use the text-shadow property, you can generate a text shadow directly with our [CSS Text Shadow Generator](#).

Here you see how black text with a 4 pixel rgb(220, 200, 195) colored shadow looks like.

```
.shadow{ text-shadow: 4px 4px 2px rgb(220, 200, 195) }
```

Border

The CSS property to change the border of an element to XYZ 60.0198, 60.4643, 60.1372 is called "border". The border property can be set on classes, ids or directly on the HTML element.

This example shows the color as border, it can be applied via the CSS property "border" or "border-color".

```
.border, #border, table{ border:4px solid rgb(220, 200, 195) }
```


If only the border color should be changed use the property `border-color`.

```
.border{ border-color:rgb(220, 200, 195) }
```

If you want to add a box shadow in that color use:

Here you see how a box with a 4 pixel `rgb(220, 200, 195)` colored shadow looks like.

```
.boxshadow{ -moz-box-shadow:4px 4px 4px 4px rgb(220, 200, 195); -webkit-box-shadow:4px 4px 4px 4px rgb(220, 200, 195); box-shadow:4px 4px 4px 4px rgb(220, 200, 195) }
```

Background

The CSS property to change the background color of an element to XYZ 60.0198, 60.4643, 60.1372 is called "background". The background property can be set on classes, ids or directly on the HTML element.

```
.background, #background, body{  
background: rgb(220, 200, 195) }
```

If only the background color should be changed can be used:

```
.background{ background-color: rgb(220,  
200, 195) }
```

This example shows the color as background, it is applied via the CSS property "background".

To optimize and compress your CSS code, you can use our [online CSS compressor and optimizer](#) based on csstidy. If you want to create a linear or radial gradient as background or border, check our [CSS Gradient Generator](#).

Hey! You found this booklet interesting? Support Converting Colors with the new Membership Option!

The pro membership hides all ads, plus gives you double the colors in the color bucket, and more awesome pro features!

[Learn more, Memberships starting at \\$2.50/m!](#)

**Follow me
on Twitter!**

@ConvertingColor