

Converting Colors

XYZ(60.1264, 60.2955, 60.5278)

Have a look what the booklet for
XYZ(60.1264, 60.2955, 60.5278)
contains.

XYZ(60.2060, 60.2045, 60.6720)	3
<i>Conversions</i>	4
<i>Details</i>	6
<i>Harmonies</i>	12
<i>Previews</i>	24
<i>Color Blindness Simulation</i>	28
<i>CSS Examples</i>	31

Color

**XYZ(60.2060, 60.2045,
60.6720)**

Conversions

Conversions Part 1

Format	Color
Hex	DDC7C4
RGB	221, 199, 196
RGB Percent	87%, 78%, 77%
CMY	0.1333, 0.2196, 0.2314
CMYK	0.00, 0.10, 0.11, 0.13
HSL	7°, 27%, 82%
HSV	7°, 11%, 87%
XYZ	60.2060, 60.2045, 60.6720
YIQ	205.2360, 14.0750, 3.7310

Conversions

Conversions Part 2

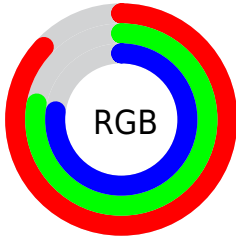
Format	Color
R _Y B	221, 199, 196
Decimal	14534596
CIE Lab	81.95, 7.21, 4.30
CIE LCh	82, 8.398, 30.797
Yxy	60.2045, 0.3325, 0.3325
Android (android.graphics.Color)	4292724676 (0xFFDDC7C4)
YUV	205.2360, -4.5533, 13.8250
Hunter-Lab	77.5916, 2.7192, 7.9528

Details

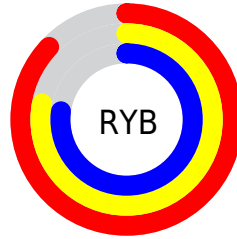
The XYZ color **60.2060, 60.2045, 60.6720** is a light color, and the websafe version is hex **CCCCCC**. A complement of this color would be **60.8872, 67.0977, 78.1493**, and the grayscale version is **58.2017, 61.2327, 66.6824**.

A 20% lighter version of the original color is **94.7296, 99.8718, 107.2129**, and **30.7338, 30.3108, 29.8219** is the 20% darker color. If you saturate the color by 10%, you get **53.6821, 50.8899, 46.9874**, and if you desaturate by 10%, it is **67.6755, 70.8160, 76.5013**.

Distribution



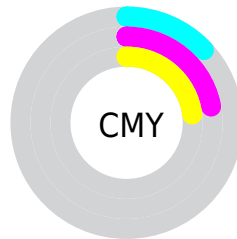
- Red (87%)
- Green (78%)
- Blue (77%)



- Red (87%)
- Yellow (78%)
- Blue (77%)



- Cyan (0%)
- Magenta (10%)
- Yellow (11%)
- Black (13%)



- Cyan (13%)
- Magenta (22%)
- Yellow (23%)

Brightness & Saturation Gradients

These gradients show how the XYZ color 60.2060, 60.2045, 60.6720 changes by changing the brightness by 10 percent. The first figure shows a shift by +10% for each color and the second figure -10%.

Similar to the brightness gradients but the following saturation gradients show a change of the XYZ color 60.2060, 60.2045, 60.6720 by changing the saturation by 10% instead.

60.2060, 60.2045,
60.6720

60.2060, 60.2045,
60.6720

415.1792,
425.3511, 444.9436

43.8348, 43.5835,
43.5317

104.2331,
105.1263, 107.3568

30.7380, 30.3432,
29.9680

132.6197,
134.1958, 137.7383

20.5503, 20.0992,
19.5625

165.7421,
168.1836, 173.3706

12.9062, 12.4672,
11.8965

203.9657,
207.4742, 214.6724

7.4406, 7.0627,
6.5515

247.6559,
252.4518, 262.0620

3.7879, 3.5013,
3.1091

297.1780,

1.5828, 1.3987,

303.5009, 315.9580

1.1506

352.8973,
361.0059, 376.7790

■ 0.3812, 0.2158,
0.0000

■ 0.0000, 0.0000,
0.0000

■ 60.2060, 60.2045,
60.6720

■ 60.2060, 60.2045,
60.6720

■ 53.6821, 50.8899,
46.9874

■ 67.6755, 70.8160,
76.5013

■ 48.0612, 42.8147,
35.3515

■ 76.1210, 82.7632,
94.5581

■ 43.3048, 35.9290,
25.6667

■ 83.6291, 94.1123,
108.3655

■ 39.3696, 30.1765,
17.8259

■ 36.2087, 25.4962,
11.7119

■ 33.7703, 21.8213,
7.1936

■ 31.9962, 19.0777,
4.1214

■ 30.8186, 17.1805,
2.3170

■ 30.2009, 16.1359,
1.5228

Harmonies

Analogous

The Analogous color harmony consists of three colors that are next to each other on the color wheel.



60.7051, 60.2045, 65.4165



60.2060, 60.2045, 60.6720



58.9047, 60.2045, 57.3816

Triad

The Triadic color harmony groups three colors that are evenly spaced from another and form a triangle on the color wheel.



60.2060, 60.2045, 60.6720



54.2935, 60.2045, 60.8961



57.2701, 60.2045, 75.8247

Complementary

The Complementary color scheme is a pair of colors which are on the opposite of each other on the color wheel.



60.2060, 60.2045, 60.6720



60.8872, 67.0977, 78.1493

Split Complementary

Split-complementary colors differ from the complementary color scheme. The scheme consists of three colors, the original color and two neighbors of the complement color.



55.5727, 60.2045, 74.4644



60.2060, 60.2045, 60.6720



53.8758, 60.2045, 65.6886

Square

The Square scheme is like the rectangle color scheme, but the four colors are evenly spaced on the color wheel.



60.2060, 60.2045, 60.6720



55.4921, 60.2045, 57.5062



54.3394, 60.2045, 70.6879



58.9887, 60.2045, 74.3164

Rectangle

The Rectangle color scheme consists of four colors that form a rectangle on the color wheel.



60.2060, 60.2045, 60.6720



57.7704, 60.2045, 56.3654



54.3394, 60.2045, 70.6879



56.6782, 60.2045, 75.6872

Sweetspot

The Sweet Spot groups the original color and five complimentary colors.



60.2077, 60.2072, 60.6733



91.7328, 95.2975, 101.8385



62.2252, 59.9192, 74.6734



19.4493, 20.1347, 21.4039



0.0000, 0.0000, 0.0000



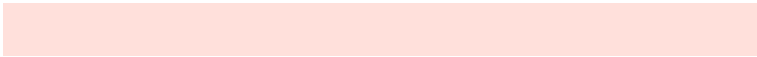
20.3446, 21.4041, 23.3091

Same Dimension

The Same Dimension uses a secret algorithm to generate beautiful new colors.



60.2077, 60.2072, 60.6733



80.6112, 79.4813, 78.3178



63.1812, 66.1543, 61.6645



13.1815, 13.3023, 13.5984



17.5873, 9.4602, 0.8990



1.1821, 0.6982, 0.0725

Inverse Universe

The Inverse Universe completely reimagines the original color for something new.



60.8872, 67.0977, 78.1493



81.7605, 91.1402, 107.8903



57.7880, 60.8993, 77.1162



13.3044, 14.5485, 16.7591



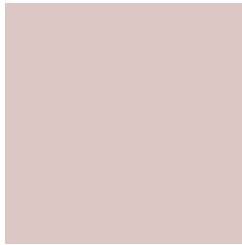
18.9017, 25.6729, 43.6975



1.2630, 1.7401, 2.8438

Previews

White Background



This preview shows how the XYZ color 60.2060, 60.2045, 60.6720 looks on a white background.

Color Contrast Check

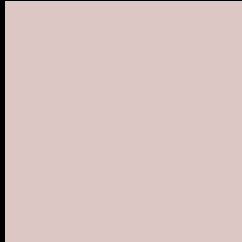
Large Text (above 18pt) WCAG AA × Fail

Any Text WCAG AA × Fail

Large Text (above 18pt) WCAG AAA × Fail

Any Text WCAG AAA × Fail

Black Background



This preview shows how the XYZ color 60.2060, 60.2045, 60.6720 looks on a black background.

Color Contrast Check

Large Text (above 18pt) WCAG AA ✓ Pass

Any Text WCAG AA ✓ Pass

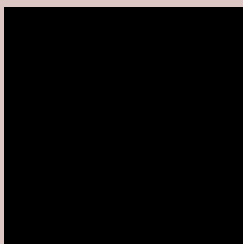
Large Text (above 18pt) WCAG AAA ✓ Pass

Any Text WCAG AAA ✓ Pass

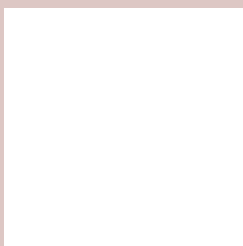
If you want to check with other color combinations, try the [Color Contrast Checker](#).

XYZ 60.2060, 60.2045, 60.6720

Background



This preview shows how black text looks on a background with the XYZ color 60.2060, 60.2045, 60.6720.



This preview shows how white text looks on a background with the XYZ color 60.2060, 60.2045,

Color Blindness Simulation

Color vision deficiency is a very complex topic, and I could not describe the different causes any better than Wikipedia does, so if you want to learn more, you should check out their [article about color blindness](#).

Dichromacy



Original Color

60.2060, 60.2045, 60.6720

Protanopia

57.8435, 60.3444, 62.0250

Deuteranopia

61.2941, 60.0868, 60.5919



Tritanopia

62.2813, 60.3739, 70.6581

Trichromacy



Original Color

60.2060, 60.2045, 60.6720

Protanomaly

58.6391, 60.4184, 61.3946

Deuteranomaly

60.8984, 60.2210, 60.6387

Tritanomaly

61.4589, 60.3740, 66.8066

Monochromacy



Original Color

60.2060, 60.2045, 60.6720

Achromatopsia

58.0276, 61.0496, 66.4830

Achromatomaly

58.8806, 60.8250, 64.5142

CSS Examples

Text

The CSS property to change the color of the text to XYZ 60.2060, 60.2045, 60.6720 is called "color". The color property can be set on classes, ids or directly on the HTML element.

This example shows how text in the color `rgb(221, 199, 196)` looks like.

```
.text, #text, p{  
    color:rgb(221, 199, 196)  
}
```

If you want to add a text shadow in that color use the text-shadow property, you can generate a text shadow directly with our [CSS Text Shadow Generator](#).

Here you see how black text with a 4 pixel rgb(221, 199, 196) colored shadow looks like.

```
.shadow{ text-shadow: 4px 4px 2px rgb(221, 199, 196) }
```

Border

The CSS property to change the border of an element to XYZ 60.2060, 60.2045, 60.6720 is called "border". The border property can be set on classes, ids or directly on the HTML element.

This example shows the color as border, it can be applied via the CSS property "border" or "border-color".

```
.border, #border, table{ border:4px solid rgb(221, 199, 196) }
```


If only the border color should be changed use the property `border-color`.

```
.border{ border-color:rgb(221, 199, 196) }
```

If you want to add a box shadow in that color use:

Here you see how a box with a 4 pixel `rgb(221, 199, 196)` colored shadow looks like.

```
.boxshadow{ -moz-box-shadow:4px 4px 4px  
4px rgb(221, 199, 196); -webkit-box-  
shadow:4px 4px 4px 4px rgb(221, 199, 196);  
box-shadow:4px 4px 4px 4px rgb(221, 199,  
196) }
```

Background

The CSS property to change the background color of an element to XYZ 60.2060, 60.2045, 60.6720 is called "background". The background property can be set on classes, ids or directly on the HTML element.

```
.background, #background, body{  
background: rgb(221, 199, 196) }
```

If only the background color should be changed can be used:

```
.background{ background-color: rgb(221,  
199, 196) }
```

This example shows the color as background, it is applied via the CSS property "background".

To optimize and compress your CSS code, you can use our [online CSS compressor and optimizer](#) based on csstidy. If you want to create a linear or radial gradient as background or border, check our [CSS Gradient Generator](#).

Hey! You found this booklet interesting? Support Converting Colors with the new Membership Option!

The pro membership hides all ads, plus gives you double the colors in the color bucket, and more awesome pro features!

[Learn more, Memberships starting at \\$2.50/m!](#)

**Follow me
on Twitter!**

@ConvertingColor