

# Converting Colors

XYZ(60.1389, 59.8025, 64.1278)

Have a look what the booklet for  
XYZ(60.1389, 59.8025, 64.1278)  
contains.

<b>XYZ(60.0682, 59.7125, 64.2368)</b> .....	3
<b><i>Conversions</i></b> .....	4
<b><i>Details</i></b> .....	6
<b><i>Harmonies</i></b> .....	12
<b><i>Previews</i></b> .....	24
<b><i>Color Blindness Simulation</i></b> .....	28
<b><i>CSS Examples</i></b> .....	31

# Color

**XYZ(60.0682, 59.7125,  
64.2368)**

# Conversions

## Conversions Part 1

<b>Format</b>	<b>Color</b>
Hex	DBC6CA
RGB	219, 198, 202
RGB Percent	86%, 78%, 79%
CMY	0.1412, 0.2235, 0.2078
CMYK	0.00, 0.10, 0.08, 0.14
HSL	349°, 23%, 82%
HSV	349°, 10%, 86%
XYZ	60.0682, 59.7125, 64.2368
YIQ	204.7350, 11.2320, 5.6960

# Conversions

## Conversions Part 2

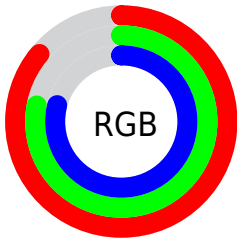
<b>Format</b>	<b>Color</b>
R <sub>Y</sub> B	219, 198, 202
Decimal	14403274
CIE Lab	81.68, 8.04, 0.68
CIE LCh	82, 8.067, 4.808
Yxy	59.7125, 0.3264, 0.3245
Android (android.graphics.Color)	4292593354 (0xFFDBC6CA)
YUV	204.7350, -1.3484, 12.5104
Hunter-Lab	77.2739, 3.5262, 4.8047

# Details

The XYZ color **60.0682, 59.7125, 64.2368** is a light color, and the websafe version is hex **CCCCCC**. A complement of this color would be **60.8883, 67.5767, 74.1279**, and the grayscale version is **57.8647, 60.8782, 66.2963**.

A 20% lighter version of the original color is **95.0500, 100.0000, 108.9000**, and **30.6284, 29.9771, 32.1889** is the 20% darker color. If you saturate the color by 10%, you get **53.4397, 49.6241, 52.2574**, and if you desaturate by 10%, it is **67.6651, 71.3501, 77.7307**.

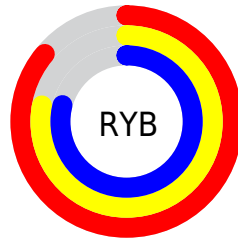
# Distribution



Red (86%)

Green (78%)

Blue (79%)



Red (86%)

Yellow (78%)

Blue (79%)

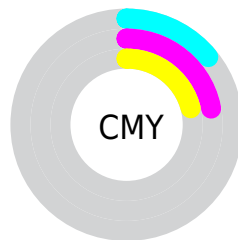


Cyan (0%)

Magenta (10%)

Yellow (8%)

Black (14%)



Cyan (14%)

Magenta (22%)

Yellow (21%)

# Brightness & Saturation Gradients

These gradients show how the XYZ color 60.0682, 59.7125, 64.2368 changes by changing the brightness by 10 percent. The first figure shows a shift by +10% for each color and the second figure -10%.

Similar to the brightness gradients but the following saturation gradients show a change of the XYZ color 60.0682, 59.7125, 64.2368 by changing the saturation by 10% instead.



■ 60.0682, 59.7125,  
64.2368

■ 60.0682, 59.7125,  
64.2368

414.6798,  
423.5372, 458.2752

■ 43.7233, 43.1869,  
46.3951

104.0344,  
104.4125, 112.5546

■ 30.6500, 30.0318,  
32.2068

132.3863,  
133.3557, 143.8679

■ 20.4830, 19.8627,  
21.2534

165.4714,  
167.2070, 180.5086

■ 12.8569, 12.2953,  
13.1163

203.6548,  
206.3506, 222.8955

■ 7.4064, 6.9451,  
7.3770

247.3020,  
251.1711, 271.4471

■ 3.7661, 3.4278,  
3.6170

296.7784,

■ 1.5707, 1.3589,

302.0528, 326.5819

1.4177

352.4492,  
359.3800, 388.7184

■ 0.3732, 0.1862,  
0.1554

■ 0.0000, 0.0000,  
0.0000

■ 60.0682, 59.7125,  
64.2368

■ 60.0682, 59.7125,  
64.2368

■ 53.4397, 49.6241,  
52.2574

■ 67.6651, 71.3501,  
77.7307

■ 47.7356, 41.0121,  
41.7356

■ 76.2622, 84.5904,  
92.7857

■ 42.9158, 33.8093,  
32.6164

■ 83.0238, 93.8003,  
108.3372

■ 38.9352, 27.9403,  
24.8398

■ 35.7450, 23.3228,  
18.3416

■ 33.2909, 19.8651,  
13.0521

■ 31.5117, 17.4629,  
8.8946

■ 30.3358, 15.9931,  
5.7833

■ 29.6490, 15.2500,  
3.6104

# Harmonies

## Analogous

The Analogous color harmony consists of three colors that are next to each other on the color wheel.



59.7584, 59.7125, 69.0752



60.0682, 59.7125, 64.2368



59.4759, 59.7125, 59.8280

# Triad

The Triadic color harmony groups three colors that are evenly spaced from another and form a triangle on the color wheel.



60.0682, 59.7125, 64.2368



54.9130, 59.7125, 57.6433



55.3776, 59.7125, 73.8428

# Complementary

The Complementary color scheme is a pair of colors which are on the opposite of each other on the color wheel.



60.0682, 59.7125, 64.2368



60.8883, 67.5767, 74.1279

# Split Complementary

Split-complementary colors differ from the complementary color scheme. The scheme consists of three colors, the original color and two neighbors of the complement color.



54.1183, 59.7125, 70.4971



60.0682, 59.7125, 64.2368



53.8538, 59.7125, 61.1205

# Square

The Square scheme is like the rectangle color scheme, but the four colors are evenly spaced on the color wheel.



60.0682, 59.7125, 64.2368



56.4819, 59.7125, 56.1440



53.5658, 59.7125, 65.8030



57.0288, 59.7125, 74.7783



# Rectangle

The Rectangle color scheme consists of four colors that form a rectangle on the color wheel.



60.0682, 59.7125, 64.2368



58.6559, 59.7125, 57.6765



53.5658, 59.7125, 65.8030



54.8955, 59.7125, 72.9548

# Sweetspot

The Sweet Spot groups the original color and five complimentary colors.



60.0699, 59.7151, 64.2381



91.6765, 94.8233, 102.9348



60.9478, 59.9222, 75.3725



19.4342, 20.0074, 21.6983



0.0000, 0.0000, 0.0000



20.3446, 21.4041, 23.3091



# Same Dimension

The Same Dimension uses a secret algorithm to generate beautiful new colors.



60.0699, 59.7151, 64.2381



82.3177, 80.5123, 86.2298



61.0726, 62.4681, 62.2679



13.1568, 13.0918, 14.0870



17.5967, 9.0397, 2.2564



1.1701, 0.5977, 0.3046



# Inverse Universe

The Inverse Universe completely reimagines the original color for something new.



60.0699, 59.7151, 64.2381



82.3177, 80.5123, 86.2298



59.7959, 64.5599, 76.3284



13.1568, 13.0918, 14.0870



17.5967, 9.0397, 2.2564

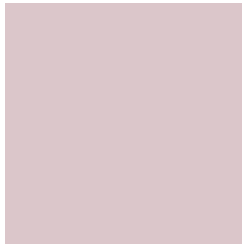


1.1701, 0.5977, 0.3046



# Previews

## White Background



This preview shows how the XYZ color 60.0682, 59.7125, 64.2368 looks on a white background.

## Color Contrast Check

Large Text (above 18pt) WCAG AA × Fail

Any Text WCAG AA × Fail

Large Text (above 18pt) WCAG AAA × Fail

Any Text WCAG AAA × Fail



# Black Background



This preview shows how the XYZ color 60.0682, 59.7125, 64.2368 looks on a black background.

## Color Contrast Check

Large Text (above 18pt) WCAG AA ✓ Pass

Any Text WCAG AA ✓ Pass

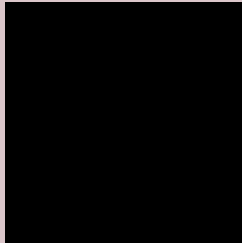
Large Text (above 18pt) WCAG AAA ✓ Pass

Any Text WCAG AAA ✓ Pass

If you want to check with other color combinations, try the [Color Contrast Checker](#).

**XYZ 60.0682, 59.7125, 64.2368**

## **Background**



This preview shows how black text looks on a background with the XYZ color 60.0682, 59.7125, 64.2368.



This preview shows how white text looks on a background with the XYZ color 60.0682, 59.7125,



# Color Blindness Simulation

Color vision deficiency is a very complex topic, and I could not describe the different causes any better than Wikipedia does, so if you want to learn more, you should check out their [article about color blindness](#).

## Dichromacy



### Original Color

60.0682, 59.7125, 64.2368

### Protanopia

57.4732, 59.7225, 65.6252

### Deuteranopia

61.0583, 59.8847, 64.2179



## Tritanopia

61.1388, 59.4490, 70.5398

# Trichromacy



## Original Color

60.0682, 59.7125, 64.2368

## Protanomaly

58.5301, 59.9340, 64.9835

## Deuteranomaly

60.7511, 59.7264, 64.2035

## Tritanomaly

60.8666, 59.7022, 67.9902

# Monochromacy



## Original Color

60.0682, 59.7125, 64.2368

## Achromatopsia

58.0276, 61.0496, 66.4830

## Achromatomaly

58.5980, 60.3023, 65.6778

# CSS Examples

## Text

The CSS property to change the color of the text to XYZ 60.0682, 59.7125, 64.2368 is called "color". The color property can be set on classes, ids or directly on the HTML element.

This example shows how text in the color rgb(219, 198, 202) looks like.

```
.text, #text, p{  
    color:rgb(219, 198, 202)  
}
```

If you want to add a text shadow in that color use the text-shadow property, you can generate a text shadow directly with our [CSS Text Shadow Generator](#).

Here you see how black text with a 4 pixel rgb(219, 198, 202) colored shadow looks like.

```
.shadow{ text-shadow: 4px 4px 2px rgb(219, 198, 202) }
```

## Border

The CSS property to change the border of an element to XYZ 60.0682, 59.7125, 64.2368 is called "border". The border property can be set on classes, ids or directly on the HTML element.

This example shows the color as border, it can be applied via the CSS property "border" or "border-color".

```
.border, #border, table{ border:4px solid rgb(219, 198, 202) }
```



If only the border color should be changed use the property `border-color`.

```
.border{ border-color:rgb(219, 198, 202) }
```

If you want to add a box shadow in that color use:

Here you see how a box with a 4 pixel `rgb(219, 198, 202)` colored shadow looks like.

```
.boxshadow{ -moz-box-shadow:4px 4px 4px  
4px rgb(219, 198, 202); -webkit-box-  
shadow:4px 4px 4px 4px rgb(219, 198, 202);  
box-shadow:4px 4px 4px 4px rgb(219, 198,  
202) }
```

# Background

The CSS property to change the background color of an element to XYZ 60.0682, 59.7125, 64.2368 is called "background". The background property can be set on classes, ids or directly on the HTML element.

```
.background, #background, body{  
background: rgb(219, 198, 202) }
```

If only the background color should be changed can be used:

```
.background{ background-color: rgb(219,  
198, 202) }
```

This example shows the color as background, it is applied via the CSS property "background".

To optimize and compress your CSS code, you can use our [online CSS compressor and optimizer](#) based on csstidy. If you want to create a linear or radial gradient as background or border, check our [CSS Gradient Generator](#).

Hey! You found this booklet interesting? Support Converting Colors with the new Membership Option!

The pro membership hides all ads, plus gives you double the colors in the color bucket, and more awesome pro features!

**[Learn more, Memberships starting at \\$2.50/m!](#)**

**Follow me  
on Twitter!**

@ConvertingColor