

Converting Colors

XYZ(60.2827, 58.6026, 64.2292)

Have a look what the booklet for
XYZ(60.2827, 58.6026, 64.2292)
contains.

XYZ(60.0767, 58.3774, 63.9787)	3
<i>Conversions</i>	4
<i>Details</i>	6
<i>Harmonies</i>	12
<i>Previews</i>	24
<i>Color Blindness Simulation</i>	28
<i>CSS Examples</i>	31

Color

**XYZ(60.0767, 58.3774,
63.9787)**

Conversions

Conversions Part 1

Format	Color
Hex	DEC2CA
RGB	222, 194, 202
RGB Percent	87%, 76%, 79%
CMY	0.1294, 0.2392, 0.2078
CMYK	0.00, 0.13, 0.09, 0.13
HSL	343°, 30%, 82%
HSV	343°, 13%, 87%
XYZ	60.0767, 58.3774, 63.9787
YIQ	203.2840, 14.1200, 8.4240

Conversions

Conversions Part 2

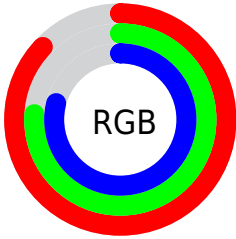
Format	Color
R _Y B	222, 194, 202
Decimal	14598858
CIE Lab	80.95, 11.22, -0.36
CIE LCh	81, 11.227, 358.144
Yxy	58.3774, 0.3293, 0.3200
Android (android.graphics.Color)	4292788938 (0xFFDEC2CA)
YUV	203.2840, -0.6330, 16.4139
Hunter-Lab	76.4051, 6.6441, 3.8364

Details

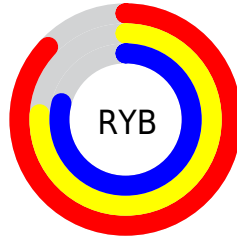
The XYZ color **60.0767, 58.3774, 63.9787** is a light color, and the websafe version is hex **CCCCCC**. A complement of this color would be **60.5093, 68.5685, 73.6676**, and the grayscale version is **56.9422, 59.9076, 65.2394**.

A 20% lighter version of the original color is **93.7872, 97.4744, 108.4791**, and **30.6597, 29.1098, 32.0198** is the 20% darker color. If you saturate the color by 10%, you get **53.7181, 48.5119, 53.0660**, and if you desaturate by 10%, it is **67.3697, 69.8014, 76.1564**.

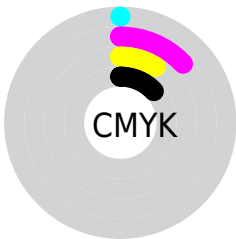
Distribution



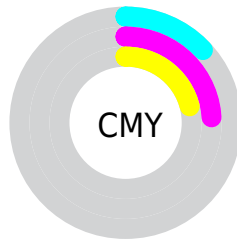
- Red (87%)
- Green (76%)
- Blue (79%)



- Red (87%)
- Yellow (76%)
- Blue (79%)



- Cyan (0%)
- Magenta (13%)
- Yellow (9%)
- Black (13%)



- Cyan (13%)
- Magenta (24%)
- Yellow (21%)

Brightness & Saturation Gradients

These gradients show how the XYZ color 60.0767, 58.3774, 63.9787 changes by changing the brightness by 10 percent. The first figure shows a shift by +10% for each color and the second figure -10%.

Similar to the brightness gradients but the following saturation gradients show a change of the XYZ color 60.0767, 58.3774, 63.9787 by changing the saturation by 10% instead.

60.0767, 58.3774,
63.9787

60.0767, 58.3774,
63.9787

414.7106,
418.5907, 457.3181

43.7302, 42.1121,
46.1873

104.0466,
102.4722, 112.1794

30.6554, 29.1891,
32.0440

132.4007,
131.0706, 143.4259

20.4871, 19.2239,
21.1300

165.4881,
164.5488, 179.9945

12.8600, 11.8322,
13.0269

203.6740,
203.2912, 222.3037

7.4085, 6.6295,
7.3161

247.3238,
247.6822, 270.7722

3.7675, 3.2315,
3.5791

296.8030,

1.5714, 1.2538,

298.1062, 325.8183

1.3974

352.4768,
354.9476, 387.8608

■ 0.3737, 0.1050,
0.1397

■ 0.0000, 0.0000,
0.0000

■ 60.0767, 58.3774,
63.9787

■ 60.0767, 58.3774,
63.9787

■ 53.7181, 48.5119,
53.0660

■ 67.3697, 69.8014,
76.1564

■ 48.2505, 40.1296,
43.3733

■ 75.6284, 82.8396,
89.6348

■ 43.6344, 33.1605,
34.8579

■ 83.0740, 93.9256,
103.8481

■ 39.8254, 27.5260,
27.4734

■ 83.9346, 94.2698,
108.3798

■ 36.7749, 23.1397,
21.1702

■ 34.4286, 19.9047,
15.8947

■ 32.7249, 17.7101,
11.5879

■ 31.5903, 16.4222,
8.1841

■ 31.0332, 15.8933,
6.1947

Harmonies

Analogous

The Analogous color harmony consists of three colors that are next to each other on the color wheel.



59.3717, 58.3774, 70.5650



60.0767, 58.3774, 63.9787



59.5233, 58.3774, 57.7112

Triad

The Triadic color harmony groups three colors that are evenly spaced from another and form a triangle on the color wheel.



60.0767, 58.3774, 63.9787



53.4032, 58.3774, 52.9256



53.1590, 58.3774, 75.0738

Complementary

The Complementary color scheme is a pair of colors which are on the opposite of each other on the color wheel.



60.0767, 58.3774, 63.9787



60.5093, 68.5685, 73.6676

Split Complementary

Split-complementary colors differ from the complementary color scheme. The scheme consists of three colors, the original color and two neighbors of the complement color.



51.6354, 58.3774, 69.7977



60.0767, 58.3774, 63.9787



51.7736, 58.3774, 57.0403

Square

The Square scheme is like the rectangle color scheme, but the four colors are evenly spaced on the color wheel.



60.0767, 58.3774, 63.9787



55.6309, 58.3774, 51.6024



51.1353, 58.3774, 63.1492



55.3413, 58.3774, 77.2423

Rectangle

The Rectangle color scheme consists of four colors that form a rectangle on the color wheel.



60.0767, 58.3774, 63.9787



58.5237, 58.3774, 54.4930



51.1353, 58.3774, 63.1492



52.5552, 58.3774, 73.5876

Sweetspot

The Sweet Spot groups the original color and five complimentary colors.



60.0784, 58.3800, 63.9799



90.7308, 93.2034, 101.7819



60.0936, 58.0962, 77.1546



19.2514, 19.6844, 21.5059



0.0000, 0.0000, 0.0000



20.3446, 21.4041, 23.3091

Same Dimension

The Same Dimension uses a secret algorithm to generate beautiful new colors.



60.0784, 58.3800, 63.9799



79.9470, 76.3403, 83.6839



60.4255, 60.5506, 59.5446



13.8674, 13.7646, 15.0719



18.4744, 9.4568, 3.8981



1.3184, 0.6706, 0.4697

Inverse Universe

The Inverse Universe completely reimagines the original color for something new.



60.0784, 58.3800, 63.9799



79.9470, 76.3403, 83.6839



60.0934, 66.0620, 78.6921



13.8674, 13.7646, 15.0719



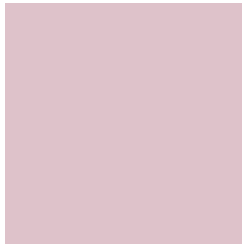
18.4744, 9.4568, 3.8981



1.3184, 0.6706, 0.4697

Previews

White Background



This preview shows how the XYZ color 60.0767, 58.3774, 63.9787 looks on a white background.

Color Contrast Check

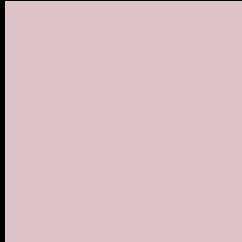
Large Text (above 18pt) WCAG AA × Fail

Any Text WCAG AA × Fail

Large Text (above 18pt) WCAG AAA × Fail

Any Text WCAG AAA × Fail

Black Background



This preview shows how the XYZ color 60.0767, 58.3774, 63.9787 looks on a black background.

Color Contrast Check

Large Text (above 18pt) WCAG AA ✓ Pass

Any Text WCAG AA ✓ Pass

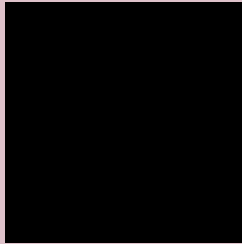
Large Text (above 18pt) WCAG AAA ✓ Pass

Any Text WCAG AAA ✓ Pass

If you want to check with other color combinations, try the [Color Contrast Checker](#).

XYZ 60.0767, 58.3774, 63.9787

Background



This preview shows how black text looks on a background with the XYZ color 60.0767, 58.3774, 63.9787.



This preview shows how white text looks on a background with the XYZ color 60.0767, 58.3774,

Color Blindness Simulation

Color vision deficiency is a very complex topic, and I could not describe the different causes any better than Wikipedia does, so if you want to learn more, you should check out their [article about color blindness](#).

Dichromacy



Original Color

60.0767, 58.3774, 63.9787

Protanopia

56.4235, 58.4613, 66.7028

Deuteranopia

59.6910, 58.5101, 64.0246



Tritanopia

60.8866, 58.3820, 67.7343

Trichromacy



Original Color

60.0767, 58.3774, 63.9787

Protanomaly

57.7919, 58.4976, 66.0028

Deuteranomaly

59.9946, 58.6666, 64.0389

Tritanomaly

60.6420, 58.2841, 66.4463

Monochromacy



Original Color

60.0767, 58.3774, 63.9787

Achromatopsia

56.7640, 59.7202, 65.0353

Achromatomaly

58.0121, 59.3220, 64.8926

CSS Examples

Text

The CSS property to change the color of the text to XYZ 60.0767, 58.3774, 63.9787 is called "color". The color property can be set on classes, ids or directly on the HTML element.

This example shows how text in the color `rgb(222, 194, 202)` looks like.

```
.text, #text, p{  
    color:rgb(222, 194, 202)  
}
```

If you want to add a text shadow in that color use the text-shadow property, you can generate a text shadow directly with our [CSS Text Shadow Generator](#).

Here you see how black text with a 4 pixel rgb(222, 194, 202) colored shadow looks like.

```
.shadow{ text-shadow: 4px 4px 2px rgb(222, 194, 202) }
```

Border

The CSS property to change the border of an element to XYZ 60.0767, 58.3774, 63.9787 is called "border". The border property can be set on classes, ids or directly on the HTML element.

This example shows the color as border, it can be applied via the CSS property "border" or "border-color".

```
.border, #border, table{ border:4px solid rgb(222, 194, 202) }
```


If only the border color should be changed use the property border-color.

```
.border{ border-color:rgb(222, 194, 202) }
```

If you want to add a box shadow in that color use:

Here you see how a box with a 4 pixel rgb(222, 194, 202) colored shadow looks like.

```
.boxshadow{ -moz-box-shadow:4px 4px 4px  
4px rgb(222, 194, 202); -webkit-box-  
shadow:4px 4px 4px 4px rgb(222, 194, 202);  
box-shadow:4px 4px 4px 4px rgb(222, 194,  
202) }
```

Background

The CSS property to change the background color of an element to XYZ 60.0767, 58.3774, 63.9787 is called "background". The background property can be set on classes, ids or directly on the HTML element.

```
.background, #background, body{  
background: rgb(222, 194, 202) }
```

If only the background color should be changed can be used:

```
.background{ background-color: rgb(222,  
194, 202) }
```

This example shows the color as background, it is applied via the CSS property "background".

To optimize and compress your CSS code, you can use our [online CSS compressor and optimizer](#) based on csstidy. If you want to create a linear or radial gradient as background or border, check our [CSS Gradient Generator](#).

Hey! You found this booklet interesting? Support Converting Colors with the new Membership Option!

The pro membership hides all ads, plus gives you double the colors in the color bucket, and more awesome pro features!

[Learn more, Memberships starting at \\$2.50/m!](#)

**Follow me
on Twitter!**

@ConvertingColor