

# Converting Colors

XYZ(60.2841, 58.1073, 66.1576)

Have a look what the booklet for  
XYZ(60.2841, 58.1073, 66.1576)  
contains.

<b>XYZ(60.3347, 58.1258, 66.4319)</b> .....	3
<b><i>Conversions</i></b> .....	4
<b><i>Details</i></b> .....	6
<b><i>Harmonies</i></b> .....	12
<b><i>Previews</i></b> .....	24
<b><i>Color Blindness Simulation</i></b> .....	28
<b><i>CSS Examples</i></b> .....	31

# Color

**XYZ(60.3347, 58.1258,  
66.4319)**

# Conversions

## Conversions Part 1

Format	Color
Hex	DEC1CE
RGB	222, 193, 206
RGB Percent	87%, 76%, 81%
CMY	0.1294, 0.2431, 0.1922
CMYK	0.00, 0.13, 0.07, 0.13
HSL	333°, 31%, 81%
HSV	333°, 13%, 87%
XYZ	60.3347, 58.1258, 66.4319
YIQ	203.1530, 13.1110, 10.1910

# Conversions

## Conversions Part 2

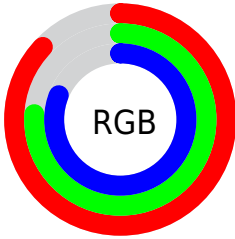
<b>Format</b>	<b>Color</b>
R <sub>Y</sub> B	222, 193, 206
Decimal	14598606
CIE Lab	80.81, 12.44, -2.72
CIE LCh	81, 12.729, 347.669
Yxy	58.1258, 0.3263, 0.3144
Android (android.graphics.Color)	4292788686 (0xFFDEC1CE)
YUV	203.1530, 1.4036, 16.5288
Hunter-Lab	76.2403, 7.8401, 1.7059

# Details

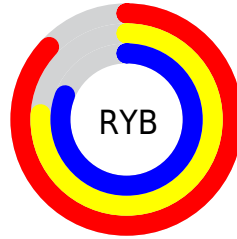
The XYZ color **60.3347, 58.1258, 66.4319** is a light color, and the websafe version is hex **FFCCCC**. A complement of this color would be **59.6245, 68.1849, 70.3433**, and the grayscale version is **56.8479, 59.8085, 65.1314**.

A 20% lighter version of the original color is **93.1657, 96.2314, 108.2719**, and **30.8365, 28.9477, 33.6680** is the 20% darker color. If you saturate the color by 10%, you get **54.3603, 48.4659, 57.3824**, and if you desaturate by 10%, it is **67.1651, 69.3105, 76.3404**.

# Distribution



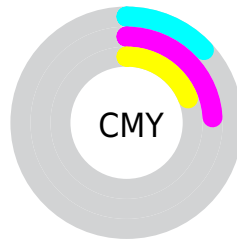
- Red (87%)
- Green (76%)
- Blue (81%)



- Red (87%)
- Yellow (76%)
- Blue (81%)



- Cyan (0%)
- Magenta (13%)
- Yellow (7%)
- Black (13%)



- Cyan (13%)
- Magenta (24%)
- Yellow (19%)

# Brightness & Saturation Gradients

These gradients show how the XYZ color 60.3347, 58.1258, 66.4319 changes by changing the brightness by 10 percent. The first figure shows a shift by +10% for each color and the second figure -10%.

Similar to the brightness gradients but the following saturation gradients show a change of the XYZ color 60.3347, 58.1258, 66.4319 by changing the saturation by 10% instead.



60.3347, 58.1258,  
66.4319

60.3347, 58.1258,  
66.4319

415.6454,  
417.6545, 466.3662

43.9390, 41.9098,  
48.1644

104.4186,  
102.1060, 115.7389

30.8202, 29.0307,  
33.5962

132.8375,  
130.6390, 147.6155

20.6132, 19.1040,  
22.3087

165.9948,  
164.0465, 184.8655

12.9524, 11.7455,  
13.8834

204.2560,  
202.7128, 227.9075

7.4725, 6.5706,  
7.9018

247.9862,  
247.0224, 277.1601

3.8083, 3.1950,  
3.9453

297.5510,

1.5942, 1.2344,

297.3596, 333.0417

1.5954

353.3156,  
354.1089, 395.9709

■ 0.3887, 0.0895,  
0.2875

■ 0.0000, 0.0000,  
0.0000

■ 60.3347, 58.1258,  
66.4319

■ 60.3347, 58.1258,  
66.4319

■ 54.3603, 48.4659,  
57.3824

■ 67.1651, 69.3105,  
76.3404

■ 49.2016, 40.2567,  
49.1634

■ 74.8797, 82.0746,  
87.1278

■ 44.8223, 33.4293,  
41.7501

■ 82.0246, 93.5058,  
98.3224

■ 41.1814, 27.9061,  
35.1148

■ 83.9345, 94.2697,  
108.3798

■ 38.2338, 23.6017,  
29.2281

■ 35.9294, 20.4208,  
24.0581

■ 34.2105, 18.2530,  
19.5695

■ 33.0079, 16.9657,  
15.7228

■ 32.4006, 16.4402,  
13.3960

# Harmonies

## Analogous

The Analogous color harmony consists of three colors that are next to each other on the color wheel.



59.0694, 58.1258, 73.5491



60.3347, 58.1258, 66.4319



60.2055, 58.1258, 58.9952

# Triad

The Triadic color harmony groups three colors that are evenly spaced from another and form a triangle on the color wheel.



60.3347, 58.1258, 66.4319



53.7264, 58.1258, 50.4709



51.9116, 58.1258, 74.6083

# Complementary

The Complementary color scheme is a pair of colors which are on the opposite of each other on the color wheel.



60.3347, 58.1258, 66.4319



59.6245, 68.1849, 70.3433

# Split Complementary

Split-complementary colors differ from the complementary color scheme. The scheme consists of three colors, the original color and two neighbors of the complement color.



50.5682, 58.1258, 67.7865



60.3347, 58.1258, 66.4319



51.5928, 58.1258, 54.0306

# Square

The Square scheme is like the rectangle color scheme, but the four colors are evenly spaced on the color wheel.



60.3347, 58.1258, 66.4319



56.3336, 58.1258, 50.1713



50.4533, 58.1258, 60.2470



54.1742, 58.1258, 78.5147



# Rectangle

The Rectangle color scheme consists of four colors that form a rectangle on the color wheel.



60.3347, 58.1258, 66.4319



59.3462, 58.1258, 54.8466



50.4533, 58.1258, 60.2470



51.3407, 58.1258, 72.5564

# Sweetspot

The Sweet Spot groups the original color and five complimentary colors.



60.3364, 58.1284, 66.4331



90.9889, 93.3066, 103.1411



58.5373, 56.9648, 77.0179



19.3166, 19.7104, 21.8493



0.0000, 0.0000, 0.0000



20.3446, 21.4041, 23.3091



# Same Dimension

The Same Dimension uses a secret algorithm to generate beautiful new colors.



60.3364, 58.1284, 66.4331



79.9719, 75.3083, 87.0278



59.1440, 58.1667, 58.5653



13.9613, 13.8021, 15.5663



19.2994, 9.7868, 8.2425



1.3823, 0.6962, 0.8063



# Inverse Universe

The Inverse Universe completely reimagines the original color for something new.



60.3364, 58.1284, 66.4331



79.9719, 75.3083, 87.0278



60.9167, 68.0883, 79.0395



13.9613, 13.8021, 15.5663



19.2994, 9.7868, 8.2425



1.3823, 0.6962, 0.8063



# Previews

## White Background



This preview shows how the XYZ color 60.3347, 58.1258, 66.4319 looks on a white background.

## Color Contrast Check

Large Text (above 18pt) WCAG AA × Fail

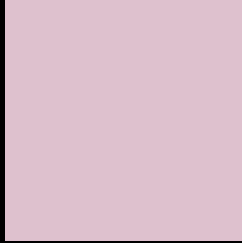
Any Text WCAG AA × Fail

Large Text (above 18pt) WCAG AAA × Fail

Any Text WCAG AAA × Fail



# Black Background



This preview shows how the XYZ color 60.3347, 58.1258, 66.4319 looks on a black background.

## Color Contrast Check

Large Text (above 18pt) WCAG AA ✓ Pass

Any Text WCAG AA ✓ Pass

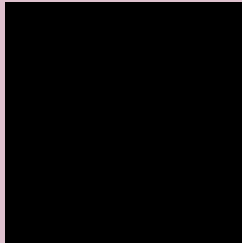
Large Text (above 18pt) WCAG AAA ✓ Pass

Any Text WCAG AAA ✓ Pass

If you want to check with other color combinations, try the [Color Contrast Checker](#).

**XYZ 60.3347, 58.1258, 66.4319**

## **Background**



This preview shows how black text looks on a background with the XYZ color 60.3347, 58.1258, 66.4319.



This preview shows how white text looks on a background with the XYZ color 60.3347, 58.1258,



# Color Blindness Simulation

Color vision deficiency is a very complex topic, and I could not describe the different causes any better than Wikipedia does, so if you want to learn more, you should check out their [article about color blindness](#).

## Dichromacy



### Original Color

60.3347, 58.1258, 66.4319

### Protanopia

56.6443, 58.5183, 69.2824

### Deuteranopia

59.5691, 58.3919, 66.5236



## Tritanopia

60.5793, 58.2236, 67.7199

# Trichromacy



## Original Color

60.3347, 58.1258, 66.4319

## Protanomaly

57.7694, 58.0913, 68.4896

## Deuteranomaly

59.6458, 58.0999, 66.4632

## Tritanomaly

60.4567, 58.1745, 67.0739

# Monochromacy



## Original Color

60.3347, 58.1258, 66.4319

## Achromatopsia

56.7640, 59.7202, 65.0353

## Achromatomaly

57.9008, 58.9081, 65.4454

# CSS Examples

## Text

The CSS property to change the color of the text to XYZ 60.3347, 58.1258, 66.4319 is called "color". The color property can be set on classes, ids or directly on the HTML element.

This example shows how text in the color `rgb(222, 193, 206)` looks like.

```
.text, #text, p{  
    color:rgb(222, 193, 206)  
}
```

If you want to add a text shadow in that color use the text-shadow property, you can generate a text shadow directly with our [CSS Text Shadow Generator](#).

Here you see how black text with a 4 pixel rgb(222, 193, 206) colored shadow looks like.

```
.shadow{ text-shadow: 4px 4px 2px rgb(222, 193, 206) }
```

## Border

The CSS property to change the border of an element to XYZ 60.3347, 58.1258, 66.4319 is called "border". The border property can be set on classes, ids or directly on the HTML element.

This example shows the color as border, it can be applied via the CSS property "border" or "border-color".

```
.border, #border, table{ border:4px solid rgb(222, 193, 206) }
```



If only the border color should be changed use the property `border-color`.

```
.border{ border-color:rgb(222, 193, 206) }
```

If you want to add a box shadow in that color use:

Here you see how a box with a 4 pixel `rgb(222, 193, 206)` colored shadow looks like.

```
.boxshadow{ -moz-box-shadow:4px 4px 4px  
4px rgb(222, 193, 206); -webkit-box-  
shadow:4px 4px 4px 4px rgb(222, 193, 206);  
box-shadow:4px 4px 4px 4px rgb(222, 193,  
206) }
```

# Background

The CSS property to change the background color of an element to XYZ 60.3347, 58.1258, 66.4319 is called "background". The background property can be set on classes, ids or directly on the HTML element.

```
.background, #background, body{  
background: rgb(222, 193, 206) }
```

If only the background color should be changed can be used:

```
.background{ background-color: rgb(222,  
193, 206) }
```

This example shows the color as background, it is applied via the CSS property "background".

To optimize and compress your CSS code, you can use our [online CSS compressor and optimizer](#) based on csstidy. If you want to create a linear or radial gradient as background or border, check our [CSS Gradient Generator](#).

Hey! You found this booklet interesting? Support Converting Colors with the new Membership Option!

The pro membership hides all ads, plus gives you double the colors in the color bucket, and more awesome pro features!

**[Learn more, Memberships starting at \\$2.50/m!](#)**

**Follow me  
on Twitter!**

@ConvertingColor