

Converting Colors

XYZ(60.2903, 57.8158, 47.7657)

Have a look what the booklet for
XYZ(60.2903, 57.8158, 47.7657)
contains.

XYZ(60.4346, 57.9409, 47.5336)	3
<i>Conversions</i>	4
<i>Details</i>	6
<i>Harmonies</i>	12
<i>Previews</i>	24
<i>Color Blindness Simulation</i>	28
<i>CSS Examples</i>	31

Color

**XYZ(60.4346, 57.9409,
47.5336)**

Conversions

Conversions Part 1

Format	Color
Hex	EBBFAD
RGB	235, 191, 173
RGB Percent	92%, 75%, 68%
CMY	0.0784, 0.2510, 0.3216
CMYK	0.00, 0.19, 0.26, 0.08
HSL	17°, 61%, 80%
HSV	17°, 26%, 92%
XYZ	60.4346, 57.9409, 47.5336
YIQ	202.1040, 32.0020, 3.7300

Conversions

Conversions Part 2

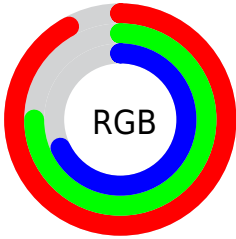
Format	Color
R _Y B	235, 198, 173
Decimal	15450029
CIE Lab	80.71, 13.12, 15.01
CIE LCh	81, 19.936, 48.862
Yxy	57.9409, 0.3643, 0.3492
Android (android.graphics.Color)	4293640109 (0xFFE8BFAD)
YUV	202.1040, -14.3483, 28.8498
Hunter-Lab	76.1189, 8.5119, 16.2587

Details

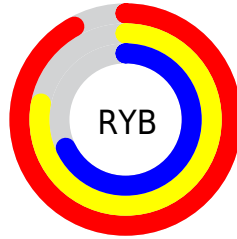
The XYZ color **60.4346, 57.9409, 47.5336** is a light color, and the websafe version is hex **FFCCCC**. A complement of this color would be **57.0412, 64.5063, 88.0422**, and the grayscale version is **56.2780, 59.2088, 64.4784**.

A 20% lighter version of the original color is **88.5044, 93.3830, 86.7588**, and **30.8998, 29.0224, 22.0625** is the 20% darker color. If you saturate the color by 10%, you get **54.9260, 50.2480, 35.4480**, and if you desaturate by 10%, it is **66.7604, 66.6272, 61.8660**.

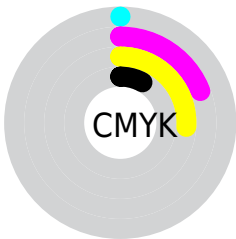
Distribution



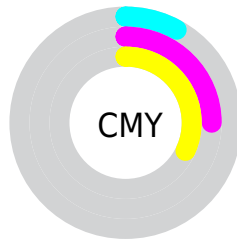
- Red (92%)
- Green (75%)
- Blue (68%)



- Red (92%)
- Yellow (78%)
- Blue (68%)



- Cyan (0%)
- Magenta (19%)
- Yellow (26%)
- Black (8%)





- Cyan (8%)
- Magenta (25%)
- Yellow (32%)

Brightness & Saturation Gradients


These gradients show how the XYZ color 60.4346, 57.9409, 47.5336 changes by changing the brightness by 10 percent. The first figure shows a shift by +10% for each color and the second figure -10%.

Similar to the brightness gradients but the following saturation gradients show a change of the XYZ color 60.4346, 57.9409, 47.5336 by changing the saturation by 10% instead.


 60.4346, 57.9409,
47.5336

 60.4346, 57.9409,
47.5336


416.0070,
416.9657, 393.3957

 44.0198, 41.7611,
33.1003


 104.5626,
101.8368, 87.8679

 30.8841, 28.9143,
21.9316

133.0066,
130.3217, 114.6060

 20.6620, 19.0160,
13.6088


166.1910,
163.6771, 146.2827

 12.9882, 11.6818,
7.7134

204.4811,
202.2875, 183.3167

 7.4974, 6.5274,
3.8270

248.2425,
246.5371, 226.1265

 3.8241, 3.1684,
1.5309

297.8403,

 1.6031, 1.2202,

296.8104, 275.1305

0.2408

353.6400,
353.4918, 330.7474

■ 0.3944, 0.0781,
0.0000

■ 0.0000, 0.0000,
0.0000

■ 60.4346, 57.9409,
47.5336

■ 60.4346, 57.9409,
47.5336

■ 54.9260, 50.2480,
35.4480

■ 66.7604, 66.6272,
61.8660

■ 50.1951, 43.5046,
25.4908

■ 73.9313, 76.3331,
78.5484

■ 46.2061, 37.6750,
17.5378

■ 81.9797, 87.0937,
97.6817

■ 42.9181, 32.7182,
11.4506

■ 88.0711, 96.4022,
108.5734

■ 40.2861, 28.5896,
7.0728

■ 38.2588, 25.2404,
4.2220

■ 36.7749, 22.6154,
2.6711

■ 36.3430, 21.8260,
2.2974

Harmonies

Analogous

The Analogous color harmony consists of three colors that are next to each other on the color wheel.



62.8918, 57.9409, 56.0511



60.4346, 57.9409, 47.5336



56.6116, 57.9409, 43.3875

Triad

The Triadic color harmony groups three colors that are evenly spaced from another and form a triangle on the color wheel.



60.4346, 57.9409, 47.5336



47.6765, 57.9409, 58.8165



57.6653, 57.9409, 87.0163

Complementary

The Complementary color scheme is a pair of colors which are on the opposite of each other on the color wheel.



60.4346, 57.9409, 47.5336



57.0412, 64.5063, 88.0422

Split Complementary

Split-complementary colors differ from the complementary color scheme. The scheme consists of three colors, the original color and two neighbors of the complement color.



53.5588, 57.9409, 87.9976



60.4346, 57.9409, 47.5336



47.9272, 57.9409, 70.6900

Square

The Square scheme is like the rectangle color scheme, but the four colors are evenly spaced on the color wheel.



60.4346, 57.9409, 47.5336



49.3320, 57.9409, 49.3407



50.0347, 57.9409, 81.7113



61.2389, 57.9409, 79.1769

Rectangle

The Rectangle color scheme consists of four colors that form a rectangle on the color wheel.



60.4346, 57.9409, 47.5336



53.8628, 57.9409, 43.2660



50.0347, 57.9409, 81.7113



56.2973, 57.9409, 88.1926

Sweetspot

The Sweet Spot groups the original color and five complimentary colors.



60.4361, 57.9436, 47.5348



87.4923, 89.8643, 91.0288



61.7859, 52.5823, 72.8350



18.4391, 18.8463, 18.8102



0.0000, 0.0000, 0.0000



20.3446, 21.4041, 23.3091

Same Dimension

The Same Dimension uses a secret algorithm to generate beautiful new colors.



60.4361, 57.9436, 47.5348



68.8098, 64.2690, 48.5169



67.8106, 72.6924, 49.9929



15.4218, 15.7666, 15.7492



20.3217, 12.3376, 1.3103



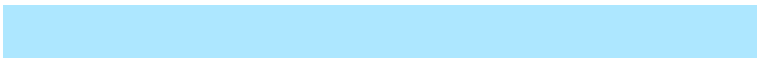
1.6760, 1.1293, 0.1296

Inverse Universe

The Inverse Universe completely reimagines the original color for something new.



57.0412, 64.5063, 88.0422



64.0331, 73.4718, 105.4143



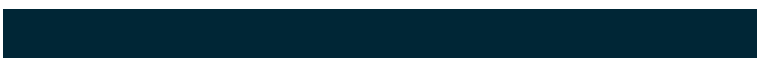
49.8800, 50.1838, 85.6551



15.1268, 16.3400, 19.2789



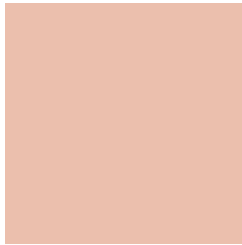
16.1267, 18.9004, 46.5411



1.3484, 1.6483, 3.6820

Previews

White Background



This preview shows how the XYZ color 60.4346, 57.9409, 47.5336 looks on a white background.

Color Contrast Check

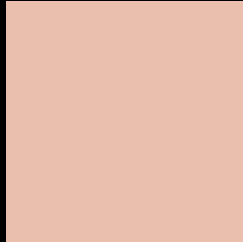
Large Text (above 18pt) WCAG AA × Fail

Any Text WCAG AA × Fail

Large Text (above 18pt) WCAG AAA × Fail

Any Text WCAG AAA × Fail

Black Background



This preview shows how the XYZ color 60.4346, 57.9409, 47.5336 looks on a black background.

Color Contrast Check

Large Text (above 18pt) WCAG AA ✓ Pass

Any Text WCAG AA ✓ Pass

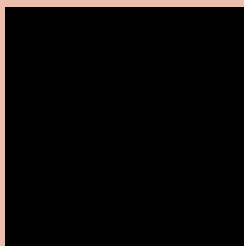
Large Text (above 18pt) WCAG AAA ✓ Pass

Any Text WCAG AAA ✓ Pass

If you want to check with other color combinations, try the [Color Contrast Checker](#).

XYZ 60.4346, 57.9409, 47.5336

Background



This preview shows how black text looks on a background with the XYZ color 60.4346, 57.9409, 47.5336.



This preview shows how white text looks on a background with the XYZ color 60.4346, 57.9409,

47.5336.

Color Blindness Simulation

Color vision deficiency is a very complex topic, and I could not describe the different causes any better than Wikipedia does, so if you want to learn more, you should check out their [article about color blindness](#).

Dichromacy



Original Color

60.4346, 57.9409, 47.5336

Protanopia

54.9847, 58.0782, 50.4317

Deuteranopia

59.2459, 57.9801, 47.6038



Tritanopia

63.5728, 57.9348, 63.0902

Trichromacy



Original Color

60.4346, 57.9409, 47.5336

Protanomaly

56.7162, 57.9725, 49.2748

Deuteranomaly

59.6712, 57.8722, 47.5606

Tritanomaly

62.3122, 57.7326, 57.1495

Monochromacy



Original Color

60.4346, 57.9409, 47.5336

Achromatopsia

56.1383, 59.0619, 64.3184

Achromatomaly

57.3296, 58.4459, 57.5498

CSS Examples

Text

The CSS property to change the color of the text to XYZ 60.4346, 57.9409, 47.5336 is called "color". The color property can be set on classes, ids or directly on the HTML element.

This example shows how text in the color `rgb(235, 191, 173)` looks like.

```
.text, #text, p{  
    color:rgb(235, 191, 173)  
}
```

If you want to add a text shadow in that color use the text-shadow property, you can generate a text shadow directly with our [CSS Text Shadow Generator](#).

Here you see how black text with a 4 pixel rgb(235, 191, 173) colored shadow looks like.

```
.shadow{ text-shadow: 4px 4px 2px rgb(235, 191, 173) }
```

Border

The CSS property to change the border of an element to XYZ 60.4346, 57.9409, 47.5336 is called "border". The border property can be set on classes, ids or directly on the HTML element.

This example shows the color as border, it can be applied via the CSS property "border" or "border-color".

```
.border, #border, table{ border:4px solid rgb(235, 191, 173) }
```


If only the border color should be changed use the property `border-color`.

```
.border{ border-color:rgb(235, 191, 173) }
```

If you want to add a box shadow in that color use:

Here you see how a box with a 4 pixel `rgb(235, 191, 173)` colored shadow looks like.

```
.boxshadow{ -moz-box-shadow:4px 4px 4px  
4px rgb(235, 191, 173); -webkit-box-  
shadow:4px 4px 4px 4px rgb(235, 191, 173);  
box-shadow:4px 4px 4px 4px rgb(235, 191,  
173) }
```

Background

The CSS property to change the background color of an element to XYZ 60.4346, 57.9409, 47.5336 is called "background". The background property can be set on classes, ids or directly on the HTML element.

```
.background, #background, body{  
background: rgb(235, 191, 173) }
```

If only the background color should be changed can be used:

```
.background{ background-color: rgb(235,  
191, 173) }
```

This example shows the color as background, it is applied via the CSS property "background".

To optimize and compress your CSS code, you can use our [online CSS compressor and optimizer](#) based on csstidy. If you want to create a linear or radial gradient as background or border, check our [CSS Gradient Generator](#).

Hey! You found this booklet interesting? Support Converting Colors with the new Membership Option!

The pro membership hides all ads, plus gives you double the colors in the color bucket, and more awesome pro features!

[Learn more, Memberships starting at \\$2.50/m!](#)

**Follow me
on Twitter!**

@ConvertingColor