

Converting Colors

XYZ(60.2974, 61.5343, 60.1331)

Have a look what the booklet for
XYZ(60.2974, 61.5343, 60.1331)
contains.

XYZ(60.4197, 61.7121, 60.3569)	3
<i>Conversions</i>	4
<i>Details</i>	6
<i>Harmonies</i>	12
<i>Previews</i>	24
<i>Color Blindness Simulation</i>	28
<i>CSS Examples</i>	31

Color

**XYZ(60.4197, 61.7121,
60.3569)**

Conversions

Conversions Part 1

Format	Color
Hex	DBCBC3
RGB	219, 203, 195
RGB Percent	86%, 80%, 76%
CMY	0.1412, 0.2039, 0.2353
CMYK	0.00, 0.07, 0.11, 0.14
HSL	20°, 25%, 81%
HSV	20°, 11%, 86%
XYZ	60.4197, 61.7121, 60.3569
YIQ	206.8720, 12.1040, 0.9040

Conversions

Conversions Part 2

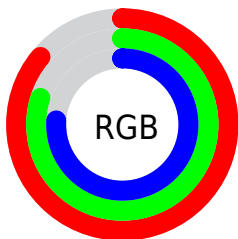
Format	Color
R _Y B	219, 207, 195
Decimal	14404547
CIE Lab	82.76, 4.23, 5.98
CIE LCh	83, 7.325, 54.767
Yxy	61.7121, 0.3311, 0.3382
Android (android.graphics.Color)	4292594627 (0xFFDBCBC3)
YUV	206.8720, -5.8529, 10.6363
Hunter-Lab	78.5570, -0.1871, 9.4363

Details

The XYZ color **60.4197, 61.7121, 60.3569** is a light color, and the websafe version is hex **CCCCCC**. A complement of this color would be **58.5859, 63.3039, 76.1496**, and the grayscale version is **59.2583, 62.3443, 67.8929**.

A 20% lighter version of the original color is **94.5707, 99.8083, 106.3760**, and **30.8650, 31.3105, 29.6161** is the 20% darker color. If you saturate the color by 10%, you get **54.8371, 54.2227, 47.1624**, and if you desaturate by 10%, it is **66.6935, 70.0013, 75.5750**.

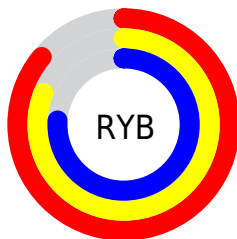
Distribution



Red (86%)

Green (80%)

Blue (76%)



Red (86%)

Yellow (81%)

Blue (76%)

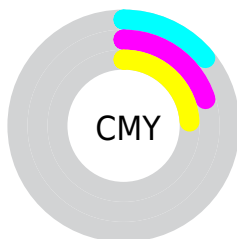


Cyan (0%)

Magenta (7%)

Yellow (11%)

Black (14%)



Cyan (14%)

Magenta (20%)

Yellow (24%)

Brightness & Saturation Gradients

These gradients show how the XYZ color 60.4197, 61.7121, 60.3569 changes by changing the brightness by 10 percent. The first figure shows a shift by +10% for each color and the second figure -10%.

Similar to the brightness gradients but the following saturation gradients show a change of the XYZ color 60.4197, 61.7121, 60.3569 by changing the saturation by 10% instead.

60.4197, 61.7121,
60.3569

60.4197, 61.7121,
60.3569

415.9530,
430.8802, 443.7532

44.0078, 44.8001,
43.2792

104.5411,
107.3093, 106.8957

30.8746, 31.3000,
29.7712

132.9814,
136.7634, 137.1938

20.6547, 20.8274,
19.4144

166.1617,
171.1668, 172.7358

12.9829, 12.9979,
11.7903

204.4476,
210.9042, 213.9403

7.4937, 7.4271,
6.4802

248.2043,
256.3598, 261.2257

3.8218, 3.7306,
3.0658

297.7972,

1.6018, 1.5240,

307.9181, 315.0106

1.1283

353.5917,
365.9634, 375.7136

■ 0.3936, 0.3056,
0.0000

■ 0.0000, 0.0000,
0.0000

■ 60.4197, 61.7121,
60.3569

■ 60.4197, 61.7121,
60.3569

■ 54.8371, 54.2227,
47.1624

■ 66.6935, 70.0013,
75.5750

■ 49.9159, 47.5009,
35.9017

■ 73.6768, 79.1053,
92.8935

■ 45.6316, 41.5240,
26.4839

■ 80.4616, 88.6761,
107.4832

■ 41.9561, 36.2651,
18.8093

■ 83.0237, 93.8002,
108.3372

■ 38.8592, 31.6956,
12.7688

■ 36.3074, 27.7850,
8.2406

■ 34.2636, 24.4998,
5.0856

■ 32.6848, 21.8031,
3.1383

■ 31.5987, 19.8302,
2.1622

Harmonies

Analogous

The Analogous color harmony consists of three colors that are next to each other on the color wheel.



61.4481, 61.7121, 63.6263



60.4197, 61.7121, 60.3569



58.9321, 61.7121, 58.9232

Triad

The Triadic color harmony groups three colors that are evenly spaced from another and form a triangle on the color wheel.



60.4197, 61.7121, 60.3569



55.6916, 61.7121, 66.4061



59.9331, 61.7121, 75.3796

Complementary

The Complementary color scheme is a pair of colors which are on the opposite of each other on the color wheel.



60.4197, 61.7121, 60.3569



58.5859, 63.3039, 76.1496

Split Complementary

Split-complementary colors differ from the complementary color scheme. The scheme consists of three colors, the original color and two neighbors of the complement color.



58.3798, 61.7121, 76.2047



60.4197, 61.7121, 60.3569



55.9489, 61.7121, 70.8926

Square

The Square scheme is like the rectangle color scheme, but the four colors are evenly spaced on the color wheel.



60.4197, 61.7121, 60.3569



56.2169, 61.7121, 62.3144



56.9260, 61.7121, 74.5288



61.1636, 61.7121, 72.3219

Rectangle

The Rectangle color scheme consists of four colors that form a rectangle on the color wheel.



60.4197, 61.7121, 60.3569



57.8871, 61.7121, 59.1528



56.9260, 61.7121, 74.5288



59.4306, 61.7121, 75.9328

Sweetspot

The Sweet Spot groups the original color and five complimentary colors.



60.4214, 61.7148, 60.3582



92.2375, 96.3069, 102.0068



60.4872, 58.7943, 69.7892



19.5851, 20.4062, 21.4491



0.0000, 0.0000, 0.0000



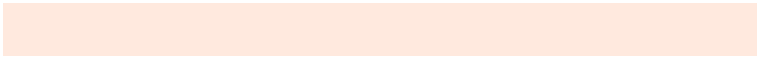
20.3446, 21.4041, 23.3091

Same Dimension

The Same Dimension uses a secret algorithm to generate beautiful new colors.



60.4214, 61.7148, 60.3582



83.5169, 84.7503, 80.9585



63.3649, 67.6018, 61.3394



13.4091, 13.7575, 13.6743



18.8266, 11.9388, 1.3122



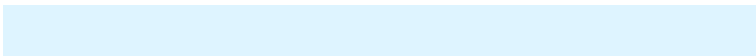
1.2974, 0.9289, 0.1109

Inverse Universe

The Inverse Universe completely reimagines the original color for something new.



58.5859, 63.3039, 76.1496



80.4622, 87.3938, 107.2356



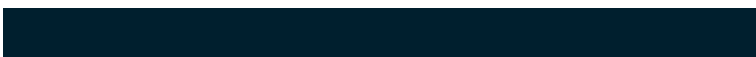
55.7161, 57.5643, 75.1930



13.0600, 14.0598, 16.6776



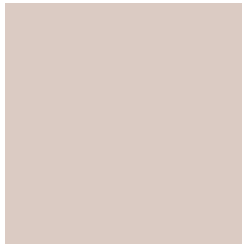
13.7776, 15.4246, 41.9895



0.9706, 1.1553, 2.7463

Previews

White Background



This preview shows how the XYZ color 60.4197, 61.7121, 60.3569 looks on a white background.

Color Contrast Check

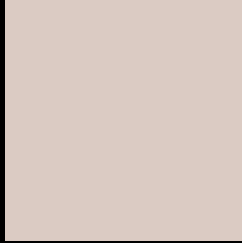
Large Text (above 18pt) WCAG AA × Fail

Any Text WCAG AA × Fail

Large Text (above 18pt) WCAG AAA × Fail

Any Text WCAG AAA × Fail

Black Background



This preview shows how the XYZ color 60.4197, 61.7121, 60.3569 looks on a black background.

Color Contrast Check

Large Text (above 18pt) WCAG AA ✓ Pass

Any Text WCAG AA ✓ Pass

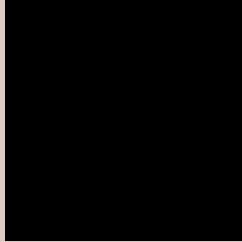
Large Text (above 18pt) WCAG AAA ✓ Pass

Any Text WCAG AAA ✓ Pass

If you want to check with other color combinations, try the [Color Contrast Checker](#).

XYZ 60.4197, 61.7121, 60.3569

Background



This preview shows how black text looks on a background with the XYZ color 60.4197, 61.7121, 60.3569.

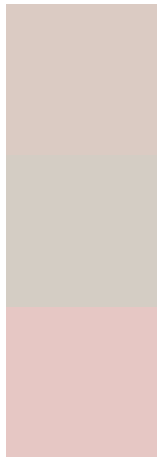


This preview shows how white text looks on a background with the XYZ color 60.4197, 61.7121,

Color Blindness Simulation

Color vision deficiency is a very complex topic, and I could not describe the different causes any better than Wikipedia does, so if you want to learn more, you should check out their [article about color blindness](#).

Dichromacy



Original Color

60.4197, 61.7121, 60.3569

Protanopia

58.9465, 61.6452, 61.0165

Deuteranopia

63.0204, 61.6554, 60.8037



Tritanopia

63.1731, 61.7960, 73.5640

Trichromacy



Original Color

60.4197, 61.7121, 60.3569

Protanomaly

59.5810, 61.6183, 60.9778

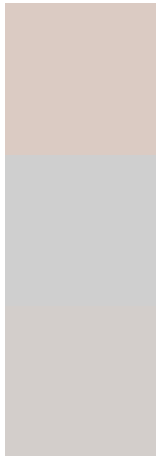
Deuteranomaly

61.9821, 61.4628, 60.8213

Tritanomaly

62.0906, 61.6995, 68.3112

Monochromacy



Original Color

60.4197, 61.7121, 60.3569

Achromatopsia

59.3074, 62.3960, 67.9493

Achromatomaly

59.7148, 62.3033, 65.3783

CSS Examples

Text

The CSS property to change the color of the text to XYZ 60.4197, 61.7121, 60.3569 is called "color". The color property can be set on classes, ids or directly on the HTML element.

This example shows how text in the color rgb(219, 203, 195) looks like.

```
.text, #text, p{  
    color:rgb(219, 203, 195)  
}
```

If you want to add a text shadow in that color use the text-shadow property, you can generate a text shadow directly with our [CSS Text Shadow Generator](#).

Here you see how black text with a 4 pixel rgb(219, 203, 195) colored shadow looks like.

```
.shadow{ text-shadow: 4px 4px 2px rgb(219, 203, 195) }
```

Border

The CSS property to change the border of an element to XYZ 60.4197, 61.7121, 60.3569 is called "border". The border property can be set on classes, ids or directly on the HTML element.

This example shows the color as border, it can be applied via the CSS property "border" or "border-color".

```
.border, #border, table{ border:4px solid rgb(219, 203, 195) }
```


If only the border color should be changed use the property `border-color`.

```
.border{ border-color:rgb(219, 203, 195) }
```

If you want to add a box shadow in that color use:

Here you see how a box with a 4 pixel `rgb(219, 203, 195)` colored shadow looks like.

```
.boxshadow{ -moz-box-shadow:4px 4px 4px  
4px rgb(219, 203, 195); -webkit-box-  
shadow:4px 4px 4px 4px rgb(219, 203, 195);  
box-shadow:4px 4px 4px 4px rgb(219, 203,  
195) }
```

Background

The CSS property to change the background color of an element to XYZ 60.4197, 61.7121, 60.3569 is called "background". The background property can be set on classes, ids or directly on the HTML element.

```
.background, #background, body{  
background: rgb(219, 203, 195) }
```

If only the background color should be changed can be used:

```
.background{ background-color: rgb(219,  
203, 195) }
```

This example shows the color as background, it is applied via the CSS property "background".

To optimize and compress your CSS code, you can use our [online CSS compressor and optimizer](#) based on csstidy. If you want to create a linear or radial gradient as background or border, check our [CSS Gradient Generator](#).

Hey! You found this booklet interesting? Support Converting Colors with the new Membership Option!

The pro membership hides all ads, plus gives you double the colors in the color bucket, and more awesome pro features!

[Learn more, Memberships starting at \\$2.50/m!](#)

**Follow me
on Twitter!**

@ConvertingColor