

Converting Colors

XYZ(60.2975, 60.1712, 64.3133)

Have a look what the booklet for
XYZ(60.2975, 60.1712, 64.3133)
contains.

XYZ(60.2975, 60.1712, 64.3133)	3
<i>Conversions</i>	4
<i>Details</i>	6
<i>Harmonies</i>	12
<i>Previews</i>	24
<i>Color Blindness Simulation</i>	28
<i>CSS Examples</i>	31

Color

**XYZ(60.2975, 60.1712,
64.3133)**

Conversions

Conversions Part 1

Format	Color
Hex	DBC7CA
RGB	219, 199, 202
RGB Percent	86%, 78%, 79%
CMY	0.1412, 0.2196, 0.2078
CMYK	0.00, 0.09, 0.08, 0.14
HSL	351°, 22%, 82%
HSV	351°, 9%, 86%
XYZ	60.2975, 60.1712, 64.3133
YIQ	205.3220, 10.9570, 5.1730

Conversions

Conversions Part 2

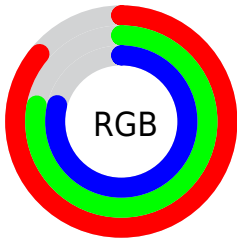
Format	Color
R _Y B	219, 199, 202
Decimal	14403530
CIE Lab	81.93, 7.51, 1.04
CIE LCh	82, 7.580, 7.884
Yxy	60.1712, 0.3263, 0.3256
Android (android.graphics.Color)	4292593610 (0xFFDBC7CA)
YUV	205.3220, -1.6377, 11.9956
Hunter-Lab	77.5701, 3.0056, 5.1418

Details

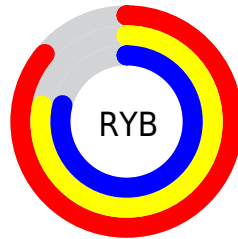
The XYZ color **60.2975, 60.1712, 64.3133** is a light color, and the websafe version is hex **CCCCCC**. A complement of this color would be **61.2817, 67.7645, 74.8190**, and the grayscale version is **58.2399, 61.2729, 66.7262**.

A 20% lighter version of the original color is **95.0500, 100.0000, 108.9000**, and **30.7805, 30.2814, 32.2396** is the 20% darker color. If you saturate the color by 10%, you get **53.5438, 49.9809, 51.8341**, and if you desaturate by 10%, it is **68.0458, 71.9234, 78.4377**.

Distribution



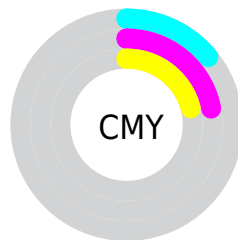
- Red (86%)
- Green (78%)
- Blue (79%)



- Red (86%)
- Yellow (78%)
- Blue (79%)



- Cyan (0%)
- Magenta (9%)
- Yellow (8%)
- Black (14%)



- Cyan (14%)
- Magenta (22%)
- Yellow (21%)

Brightness & Saturation Gradients

These gradients show how the XYZ color 60.2975, 60.1712, 64.3133 changes by changing the brightness by 10 percent. The first figure shows a shift by +10% for each color and the second figure -10%.

Similar to the brightness gradients but the following saturation gradients show a change of the XYZ color 60.2975, 60.1712, 64.3133 by changing the saturation by 10% instead.

60.2975, 60.1712,
64.3133

60.2975, 60.1712,
64.3133

415.5107,
425.2285, 458.5586

43.9089, 43.5566,
46.4567

104.3650,
105.0780, 112.6658

30.7965, 30.3221,
32.2551

132.7746,
134.1390, 143.9988

20.5950, 20.0832,
21.2900

165.9218,
168.1176, 180.6610

12.9390, 12.4555,
13.1428

204.1721,
207.3982, 223.0709

7.4633, 7.0547,
7.3951

247.8907,
252.3652, 271.6470

3.8024, 3.4963,
3.6282

297.4432,

1.5909, 1.3960,

303.4030, 326.8080

1.4237

353.1947,
360.8960, 388.9724

0.3865, 0.2138,
0.1601

0.0000, 0.0000,
0.0000

60.2975, 60.1712,
64.3133

60.2975, 60.1712,
64.3133

53.5438, 49.9809,
51.8341

68.0458, 71.9234,
78.4377

47.7393, 41.2793,
40.9364

76.8214, 85.2912,
94.2603

42.8427, 33.9988,
31.5579

83.0237, 93.8002,
108.3372

38.8076, 28.0637,
23.6306

■ 35.5836, 23.3914,
17.0816

■ 33.1148, 19.8899,
11.8314

■ 31.3382, 17.4548,
7.7922

■ 30.1801, 15.9630,
4.8650

■ 29.5294, 15.2196,
2.9277

Harmonies

Analogous

The Analogous color harmony consists of three colors that are next to each other on the color wheel.



60.0931, 60.1712, 68.8948



60.2975, 60.1712, 64.3133



59.6573, 60.1712, 60.2457

Triad

The Triadic color harmony groups three colors that are evenly spaced from another and form a triangle on the color wheel.



60.2975, 60.1712, 64.3133



55.3197, 60.1712, 58.7956



56.0388, 60.1712, 74.0357

Complementary

The Complementary color scheme is a pair of colors which are on the opposite of each other on the color wheel.



60.2975, 60.1712, 64.3133



61.2817, 67.7645, 74.8190

Split Complementary

Split-complementary colors differ from the complementary color scheme. The scheme consists of three colors, the original color and two neighbors of the complement color.



54.7935, 60.1712, 71.0855



60.2975, 60.1712, 64.3133



54.3838, 60.1712, 62.2499

Square

The Square scheme is like the rectangle color scheme, but the four colors are evenly spaced on the color wheel.



60.2975, 60.1712, 64.3133



56.7693, 60.1712, 57.1585



54.1929, 60.1712, 66.7340



57.6146, 60.1712, 74.6513

Rectangle

The Rectangle color scheme consists of four colors that form a rectangle on the color wheel.



60.2975, 60.1712, 64.3133



58.8446, 60.1712, 58.3231



54.1929, 60.1712, 66.7340



55.5685, 60.1712, 73.2777

Sweetspot

The Sweet Spot groups the original color and five complimentary colors.



60.2992, 60.1738, 64.3146



91.6283, 94.8040, 102.6808



61.5303, 60.5630, 75.4653



19.4212, 20.0022, 21.6300



0.0000, 0.0000, 0.0000



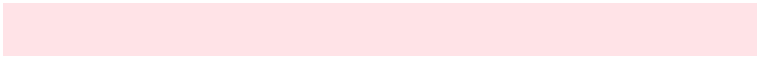
20.3446, 21.4041, 23.3091

Same Dimension

The Same Dimension uses a secret algorithm to generate beautiful new colors.



60.2992, 60.1738, 64.3146



83.1408, 81.9490, 87.1504



61.5954, 63.3284, 63.0132



13.1352, 13.0832, 13.9730



17.5084, 9.0044, 1.7914



1.1599, 0.5936, 0.2509

Inverse Universe

The Inverse Universe completely reimagines the original color for something new.



60.2992, 60.1738, 64.3146



83.1408, 81.9490, 87.1504



59.8850, 64.3456, 76.2822



13.1352, 13.0832, 13.9730



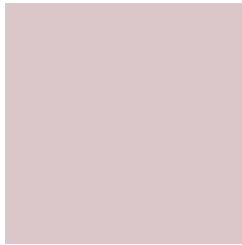
17.5084, 9.0044, 1.7914



1.1599, 0.5936, 0.2509

Previews

White Background



This preview shows how the XYZ color 60.2975, 60.1712, 64.3133 looks on a white background.

Color Contrast Check

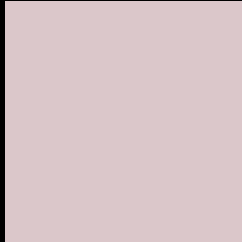
Large Text (above 18pt) WCAG AA × Fail

Any Text WCAG AA × Fail

Large Text (above 18pt) WCAG AAA × Fail

Any Text WCAG AAA × Fail

Black Background



This preview shows how the XYZ color 60.2975, 60.1712, 64.3133 looks on a black background.

Color Contrast Check

Large Text (above 18pt) WCAG AA ✓ Pass

Any Text WCAG AA ✓ Pass

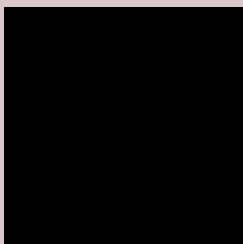
Large Text (above 18pt) WCAG AAA ✓ Pass

Any Text WCAG AAA ✓ Pass

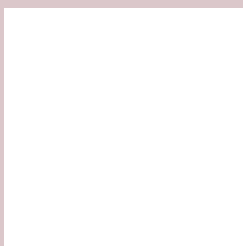
If you want to check with other color combinations, try the [Color Contrast Checker](#).

XYZ 60.2975, 60.1712, 64.3133

Background



This preview shows how black text looks on a background with the XYZ color 60.2975, 60.1712, 64.3133.



This preview shows how white text looks on a background with the XYZ color 60.2975, 60.1712,

Color Blindness Simulation

Color vision deficiency is a very complex topic, and I could not describe the different causes any better than Wikipedia does, so if you want to learn more, you should check out their [article about color blindness](#).

Dichromacy



Original Color

60.2975, 60.1712, 64.3133

Protanopia

57.9871, 60.3369, 65.7167

Deuteranopia

61.3674, 60.0441, 64.2324



Tritanopia

61.7953, 60.1088, 71.2960

Trichromacy



Original Color

60.2975, 60.1712, 64.3133

Protanomaly

58.7640, 60.4017, 65.0614

Deuteranomaly

60.9790, 60.1820, 64.2795

Tritanomaly

61.2179, 60.2073, 68.7162

Monochromacy



Original Color

60.2975, 60.1712, 64.3133

Achromatopsia

58.0276, 61.0496, 66.4830

Achromatomaly

58.8334, 60.7731, 65.7563

CSS Examples

Text

The CSS property to change the color of the text to XYZ 60.2975, 60.1712, 64.3133 is called "color". The color property can be set on classes, ids or directly on the HTML element.

This example shows how text in the color `rgb(219, 199, 202)` looks like.

```
.text, #text, p{  
    color:rgb(219, 199, 202)  
}
```

If you want to add a text shadow in that color use the text-shadow property, you can generate a text shadow directly with our [CSS Text Shadow Generator](#).

Here you see how black text with a 4 pixel rgb(219, 199, 202) colored shadow looks like.

```
.shadow{ text-shadow: 4px 4px 2px rgb(219, 199, 202) }
```

Border

The CSS property to change the border of an element to XYZ 60.2975, 60.1712, 64.3133 is called "border". The border property can be set on classes, ids or directly on the HTML element.

This example shows the color as border, it can be applied via the CSS property "border" or "border-color".

```
.border, #border, table{ border:4px solid rgb(219, 199, 202) }
```


If only the border color should be changed use the property border-color.

```
.border{ border-color:rgb(219, 199, 202) }
```

If you want to add a box shadow in that color use:

Here you see how a box with a 4 pixel rgb(219, 199, 202) colored shadow looks like.

```
.boxshadow{ -moz-box-shadow:4px 4px 4px  
4px rgb(219, 199, 202); -webkit-box-  
shadow:4px 4px 4px 4px rgb(219, 199, 202);  
box-shadow:4px 4px 4px 4px rgb(219, 199,  
202) }
```

Background

The CSS property to change the background color of an element to XYZ 60.2975, 60.1712, 64.3133 is called "background". The background property can be set on classes, ids or directly on the HTML element.

```
.background, #background, body{  
background: rgb(219, 199, 202) }
```

If only the background color should be changed can be used:

```
.background{ background-color: rgb(219,  
199, 202) }
```

This example shows the color as background, it is applied via the CSS property "background".

To optimize and compress your CSS code, you can use our [online CSS compressor and optimizer](#) based on csstidy. If you want to create a linear or radial gradient as background or border, check our [CSS Gradient Generator](#).

Hey! You found this booklet interesting? Support Converting Colors with the new Membership Option!

The pro membership hides all ads, plus gives you double the colors in the color bucket, and more awesome pro features!

[Learn more, Memberships starting at \\$2.50/m!](#)

**Follow me
on Twitter!**

@ConvertingColor