

Converting Colors

XYZ(60.3143, 58.2247, 61.4857)

Have a look what the booklet for
XYZ(60.3143, 58.2247, 61.4857)
contains.

XYZ(60.3143, 58.2247, 61.4857)	3
<i>Conversions</i>	4
<i>Details</i>	6
<i>Harmonies</i>	12
<i>Previews</i>	24
<i>Color Blindness Simulation</i>	28
<i>CSS Examples</i>	31

Color

**XYZ(60.3143, 58.2247,
61.4857)**

Conversions

Conversions Part 1

Format	Color
Hex	E1C1C6
RGB	225, 193, 198
RGB Percent	88%, 76%, 78%
CMY	0.1176, 0.2431, 0.2235
CMYK	0.00, 0.14, 0.12, 0.12
HSL	351°, 35%, 82%
HSV	351°, 14%, 88%
XYZ	60.3143, 58.2247, 61.4857
YIQ	203.1380, 17.4670, 8.3390

Conversions

Conversions Part 2

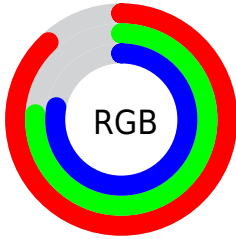
Format	Color
R_{YB}	225, 193, 198
Decimal	14795206
CIE _{Lab}	80.86, 12.15, 1.70
CIE _{LCh}	81, 12.268, 7.943
Yxy	58.2247, 0.3350, 0.3234
Android (android.graphics.Color)	4292985286 (0xFFE1C1C6)
YUV	203.1380, -2.5330, 19.1730
Hunter-Lab	76.3051, 7.5589, 5.6384

Details

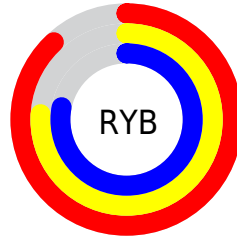
The XYZ color **60.3143, 58.2247, 61.4857** is a light color, and the websafe version is hex **FFCCCC**. A complement of this color would be **61.8380, 70.3565, 78.0344**, and the grayscale version is **56.8605, 59.8217, 65.1458**.

A 20% lighter version of the original color is **93.1657, 96.2314, 108.2719**, and **30.6288, 28.9139, 30.3522** is the 20% darker color. If you saturate the color by 10%, you get **53.6594, 48.2022, 49.1314**, and if you desaturate by 10%, it is **68.0038, 69.8755, 75.5407**.

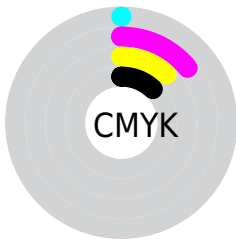
Distribution



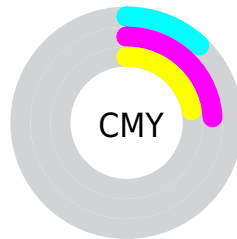
- Red (88%)
- Green (76%)
- Blue (78%)



- Red (88%)
- Yellow (76%)
- Blue (78%)



- Cyan (0%)
- Magenta (14%)
- Yellow (12%)
- Black (12%)





- Cyan (12%)
- Magenta (24%)
- Yellow (22%)

Brightness & Saturation Gradients


These gradients show how the XYZ color 60.3143, 58.2247, 61.4857 changes by changing the brightness by 10 percent. The first figure shows a shift by +10% for each color and the second figure -10%.


Similar to the brightness gradients but the following saturation gradients show a change of the XYZ color 60.3143, 58.2247, 61.4857 by changing the saturation by 10% instead.


 60.3143, 58.2247,
61.4857

 60.3143, 58.2247,
61.4857


415.5715,
418.0227, 448.0084

 43.9224, 41.9893,
44.1842


 104.3892,
102.2500, 108.5463

 30.8072, 29.0929,
30.4771


132.8030,
130.8087, 139.1423

 20.6032, 19.1511,
19.9459


165.9548,
164.2440, 175.0070

 12.9451, 11.7795,
12.1720

204.2100,
202.9402, 216.5589

 7.4675, 6.5937,
6.7370

247.9339,
247.2818, 264.2164

 3.8050, 3.2094,
3.2222

297.4918,

 1.5924, 1.2420,

297.6532, 318.3981

1.2092

353.2493,
354.4387, 379.5226

■ 0.3875, 0.0956,
0.0000

■ 0.0000, 0.0000,
0.0000

■ 60.3143, 58.2247,
61.4857

■ 60.3143, 58.2247,
61.4857

■ 53.6594, 48.2022,
49.1314

■ 68.0038, 69.8755,
75.5407

■ 47.9899, 39.7282,
38.4095

■ 76.7644, 83.2147,
91.3539

■ 43.2601, 32.7275,
29.2523

■ 84.8554, 94.7452,
108.3907

■ 39.4185, 27.1157,
21.5863

■ 84.8616, 94.7477,
108.4232

■ 36.4089, 22.7999,
15.3316

■ 34.1683, 19.6756,
10.4010

■ 32.6244, 17.6224,
6.6973

■ 31.6908, 16.4937,
4.1092

■ 31.3569, 16.1298,
3.0612

Harmonies

Analogous

The Analogous color harmony consists of three colors that are next to each other on the color wheel.



59.9863, 58.2247, 68.7894



60.3143, 58.2247, 61.4857



59.2778, 58.2247, 55.1885

Triad

The Triadic color harmony groups three colors that are evenly spaced from another and form a triangle on the color wheel.



60.3143, 58.2247, 61.4857



52.3951, 58.2247, 53.0048



53.5290, 58.2247, 77.2469

Complementary

The Complementary color scheme is a pair of colors which are on the opposite of each other on the color wheel.



60.3143, 58.2247, 61.4857



61.8380, 70.3565, 78.0344

Split Complementary

Split-complementary colors differ from the complementary color scheme. The scheme consists of three colors, the original color and two neighbors of the complement color.



51.5821, 58.2247, 72.3812



60.3143, 58.2247, 61.4857



50.9416, 58.2247, 58.2936

Square

The Square scheme is like the rectangle color scheme, but the four colors are evenly spaced on the color wheel.



60.3143, 58.2247, 61.4857



54.6694, 58.2247, 50.5420



50.6486, 58.2247, 65.3471



56.0177, 58.2247, 78.2650

Rectangle

The Rectangle color scheme consists of four colors that form a rectangle on the color wheel.



60.3143, 58.2247, 61.4857



57.9706, 58.2247, 52.2779



50.6486, 58.2247, 65.3471



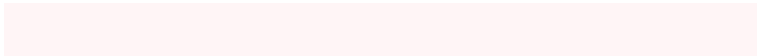
52.7918, 58.2247, 75.9901

Sweetspot

The Sweet Spot groups the original color and five complimentary colors.



60.3159, 58.2273, 61.4869



90.5268, 93.1218, 100.7082



62.0767, 58.7425, 79.3013



19.2000, 19.6638, 21.2350



0.0000, 0.0000, 0.0000



20.3446, 21.4041, 23.3091

Same Dimension

The Same Dimension uses a secret algorithm to generate beautiful new colors.



60.3159, 58.2273, 61.4869



77.4059, 73.2561, 76.6776



62.1924, 62.8874, 59.3159



13.7941, 13.7353, 14.6857



18.0966, 9.3056, 1.9083



1.2817, 0.6560, 0.2763

Inverse Universe

The Inverse Universe completely reimagines the original color for something new.



60.3159, 58.2273, 61.4869



77.4059, 73.2561, 76.6776



59.7160, 65.0377, 80.6408



13.7941, 13.7353, 14.6857



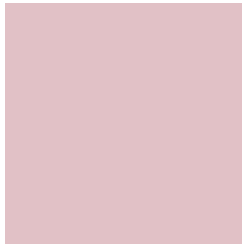
18.0966, 9.3056, 1.9083



1.2817, 0.6560, 0.2763

Previews

White Background



This preview shows how the XYZ color 60.3143, 58.2247, 61.4857 looks on a white background.

Color Contrast Check

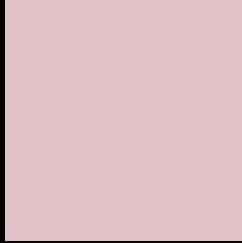
Large Text (above 18pt) WCAG AA × Fail

Any Text WCAG AA × Fail

Large Text (above 18pt) WCAG AAA × Fail

Any Text WCAG AAA × Fail

Black Background



This preview shows how the XYZ color 60.3143, 58.2247, 61.4857 looks on a black background.

Color Contrast Check

Large Text (above 18pt) WCAG AA ✓ Pass

Any Text WCAG AA ✓ Pass

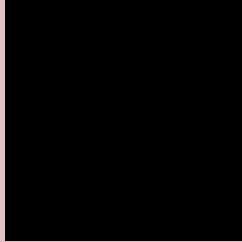
Large Text (above 18pt) WCAG AAA ✓ Pass

Any Text WCAG AAA ✓ Pass

If you want to check with other color combinations, try the [Color Contrast Checker](#).

XYZ 60.3143, 58.2247, 61.4857

Background



This preview shows how black text looks on a background with the XYZ color 60.3143, 58.2247, 61.4857.



This preview shows how white text looks on a background with the XYZ color 60.3143, 58.2247,

Color Blindness Simulation

Color vision deficiency is a very complex topic, and I could not describe the different causes any better than Wikipedia does, so if you want to learn more, you should check out their [article about color blindness](#).

Dichromacy



Original Color

60.3143, 58.2247, 61.4857

Protanopia

56.2168, 58.4102, 64.1885

Deuteranopia

59.3036, 58.0329, 61.5019



Tritanopia

61.4762, 58.3730, 67.0585

Trichromacy



Original Color

60.3143, 58.2247, 61.4857

Protanomaly

57.6602, 58.1466, 63.4427

Deuteranomaly

59.6090, 58.1904, 61.5162

Tritanomaly

61.1128, 58.2277, 65.1448

Monochromacy



Original Color

60.3143, 58.2247, 61.4857

Achromatopsia

56.7640, 59.7202, 65.0353

Achromatomaly

57.8300, 58.9128, 63.5817

CSS Examples

Text

The CSS property to change the color of the text to XYZ 60.3143, 58.2247, 61.4857 is called "color". The color property can be set on classes, ids or directly on the HTML element.

This example shows how text in the color `rgb(225, 193, 198)` looks like.

```
.text, #text, p{  
    color:rgb(225, 193, 198)  
}
```

If you want to add a text shadow in that color use the text-shadow property, you can generate a text shadow directly with our [CSS Text Shadow Generator](#).

Here you see how black text with a 4 pixel rgb(225, 193, 198) colored shadow looks like.

```
.shadow{ text-shadow: 4px 4px 2px rgb(225, 193, 198) }
```

Border

The CSS property to change the border of an element to XYZ 60.3143, 58.2247, 61.4857 is called "border". The border property can be set on classes, ids or directly on the HTML element.

This example shows the color as border, it can be applied via the CSS property "border" or "border-color".

```
.border, #border, table{ border:4px solid rgb(225, 193, 198) }
```


If only the border color should be changed use the property `border-color`.

```
.border{ border-color:rgb(225, 193, 198) }
```

If you want to add a box shadow in that color use:

Here you see how a box with a 4 pixel `rgb(225, 193, 198)` colored shadow looks like.

```
.boxshadow{ -moz-box-shadow:4px 4px 4px  
4px rgb(225, 193, 198); -webkit-box-  
shadow:4px 4px 4px 4px rgb(225, 193, 198);  
box-shadow:4px 4px 4px 4px rgb(225, 193,  
198) }
```

Background

The CSS property to change the background color of an element to XYZ 60.3143, 58.2247, 61.4857 is called "background". The background property can be set on classes, ids or directly on the HTML element.

```
.background, #background, body{  
background: rgb(225, 193, 198) }
```

If only the background color should be changed can be used:

```
.background{ background-color: rgb(225,  
193, 198) }
```

This example shows the color as background, it is applied via the CSS property "background".

To optimize and compress your CSS code, you can use our [online CSS compressor and optimizer](#) based on csstidy. If you want to create a linear or radial gradient as background or border, check our [CSS Gradient Generator](#).

Hey! You found this booklet interesting? Support Converting Colors with the new Membership Option!

The pro membership hides all ads, plus gives you double the colors in the color bucket, and more awesome pro features!

[Learn more, Memberships starting at \\$2.50/m!](#)

**Follow me
on Twitter!**

@ConvertingColor