

Converting Colors

XYZ(60.3240, 62.1778, 58.1509)

Have a look what the booklet for
XYZ(60.3240, 62.1778, 58.1509)
contains.

XYZ(60.2103, 62.0074, 58.0854)	3
<i>Conversions</i>	4
<i>Details</i>	6
<i>Harmonies</i>	12
<i>Previews</i>	24
<i>Color Blindness Simulation</i>	28
<i>CSS Examples</i>	31

Color

**XYZ(60.2103, 62.0074,
58.0854)**

Conversions

Conversions Part 1

Format	Color
Hex	DBCCBF
RGB	219, 204, 191
RGB Percent	86%, 80%, 75%
CMY	0.1412, 0.2000, 0.2510
CMYK	0.00, 0.07, 0.13, 0.14
HSL	28°, 28%, 80%
HSV	28°, 13%, 86%
XYZ	60.2103, 62.0074, 58.0854
YIQ	207.0030, 13.1130, -0.8630

Conversions

Conversions Part 2

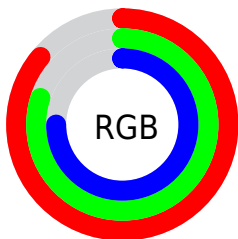
Format	Color
R_{YB}	219, 215, 191
Decimal	14404799
CIE _{Lab}	82.92, 3.05, 8.34
CIE _{LCh}	83, 8.882, 69.912
Yxy	62.0074, 0.3339, 0.3439
Android (android.graphics.Color)	4292594879 (0xFFDBCCBF)
YUV	207.0030, -7.8895, 10.5214
Hunter-Lab	78.7448, -1.3176, 11.3866

Details

The XYZ color **60.2103, 62.0074, 58.0854** is a light color, and the websafe version is hex **CCCCCC**. A complement of this color would be **56.3432, 60.3324, 75.6943**, and the grayscale version is **59.3549, 62.4459, 68.0036**.

A 20% lighter version of the original color is **93.7885, 99.4954, 102.2570**, and **30.8036, 31.5402, 28.5091** is the 20% darker color. If you saturate the color by 10%, you get **55.2950, 55.7493, 45.4324**, and if you desaturate by 10%, it is **65.6993, 68.8351, 72.7091**.

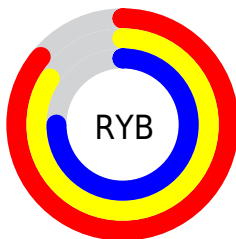
Distribution



Red (86%)

Green (80%)

Blue (75%)



Red (86%)

Yellow (84%)

Blue (75%)

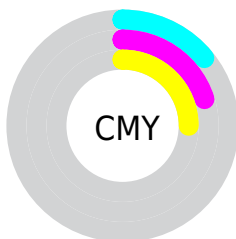


Cyan (0%)

Magenta (7%)

Yellow (13%)

Black (14%)



Cyan (14%)

Magenta (20%)

Yellow (25%)

Brightness & Saturation Gradients

These gradients show how the XYZ color 60.2103, 62.0074, 58.0854 changes by changing the brightness by 10 percent. The first figure shows a shift by +10% for each color and the second figure -10%.

Similar to the brightness gradients but the following saturation gradients show a change of the XYZ color 60.2103, 62.0074, 58.0854 by changing the saturation by 10% instead.

■ 60.2103, 62.0074,
58.0854

■ 60.2103, 62.0074,
58.0854

415.1948,
431.9581, 435.1112

■ 43.8383, 45.0387,
41.4622

■ 104.2393,
107.7362, 103.5632

■ 30.7408, 31.4879,
28.3580

132.6270,
137.2651, 133.2549

■ 20.5524, 20.9706,
18.3543

165.7505,
171.7495, 168.1397

■ 12.9078, 13.1025,
11.0326

203.9754,
211.5738, 208.6364

■ 7.4416, 7.4992,
5.9743

247.6669,
257.1225, 255.1633

■ 3.7886, 3.7762,
2.7609

297.1904,

■ 1.5832, 1.5492,

308.7798, 308.1390

0.9739

352.9113,
366.9302, 367.9822

■ 0.3814, 0.3230,
0.0000

■ 0.0000, 0.0000,
0.0000

■ 60.2103, 62.0074,
58.0854

■ 60.2103, 62.0074,
58.0854

■ 55.2950, 55.7493,
45.4324

■ 65.6993, 68.8351,
72.7091

■ 50.9280, 50.0370,
34.6606

■ 71.7765, 76.2390,
89.3797

■ 47.0888, 44.8569,
25.6795

■ 78.1866, 84.1260,
106.7248

■ 43.7542, 40.1917,
18.3894

■ 81.7364, 91.2256,
107.9081

■ 40.8983, 36.0229,
12.6810

■ 83.0237, 93.8002,
108.3372

■ 38.4930, 32.3306,
8.4315

■ 36.5063, 29.0932,
5.5000

■ 34.9004, 26.2863,
3.7167

■ 33.9367, 24.5062,
2.9415

Harmonies

Analogous

The Analogous color harmony consists of three colors that are next to each other on the color wheel.



61.8067, 62.0074, 60.9711



60.2103, 62.0074, 58.0854



58.3044, 62.0074, 57.6485

Triad

The Triadic color harmony groups three colors that are evenly spaced from another and form a triangle on the color wheel.



60.2103, 62.0074, 58.0854



55.3819, 62.0074, 69.3476



61.3311, 62.0074, 75.9340

Complementary

The Complementary color scheme is a pair of colors which are on the opposite of each other on the color wheel.



60.2103, 62.0074, 58.0854



56.3432, 60.3324, 75.6943

Split Complementary

Split-complementary colors differ from the complementary color scheme. The scheme consists of three colors, the original color and two neighbors of the complement color.



59.5725, 62.0074, 78.4487



60.2103, 62.0074, 58.0854



56.1559, 62.0074, 74.5122

Square

The Square scheme is like the rectangle color scheme, but the four colors are evenly spaced on the color wheel.



60.2103, 62.0074, 58.0854



55.5443, 62.0074, 63.9569



57.6801, 62.0074, 77.9147



62.4634, 62.0074, 71.2037

Rectangle

The Rectangle color scheme consists of four colors that form a rectangle on the color wheel.



60.2103, 62.0074, 58.0854



57.1185, 62.0074, 58.7787



57.6801, 62.0074, 77.9147



60.7920, 62.0074, 77.0778

Sweetspot

The Sweet Spot groups the original color and five complimentary colors.



60.2120, 62.0101, 58.0867



91.7329, 95.9243, 99.9066



59.0343, 56.7982, 66.5001



19.5043, 20.3709, 21.0334



0.0000, 0.0000, 0.0000



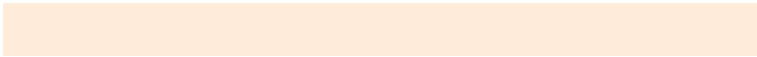
20.3446, 21.4041, 23.3091

Same Dimension

The Same Dimension uses a secret algorithm to generate beautiful new colors.



60.2120, 62.0101, 58.0867



83.3014, 85.3957, 77.5679



63.5859, 68.7580, 59.2114



13.5520, 14.0433, 13.7219



20.2299, 14.7455, 1.7799



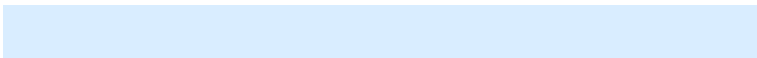
1.3962, 1.1266, 0.1439

Inverse Universe

The Inverse Universe completely reimagines the original color for something new.



56.3432, 60.3324, 75.6943



76.9435, 82.6383, 106.5032



53.2105, 54.0669, 74.6500



12.9133, 13.7664, 16.6287



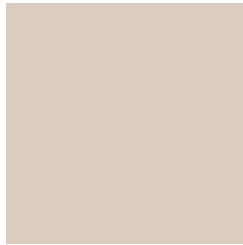
11.4844, 10.8382, 41.2251



0.8299, 0.8740, 2.6994

Previews

White Background



This preview shows how the XYZ color 60.2103, 62.0074, 58.0854 looks on a white background.

Color Contrast Check

Large Text (above 18pt) WCAG AA × Fail

Any Text WCAG AA × Fail

Large Text (above 18pt) WCAG AAA × Fail

Any Text WCAG AAA × Fail

Black Background



This preview shows how the XYZ color 60.2103, 62.0074, 58.0854 looks on a black background.

Color Contrast Check

Large Text (above 18pt) WCAG AA ✓ Pass

Any Text WCAG AA ✓ Pass

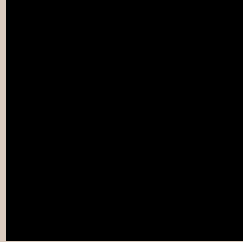
Large Text (above 18pt) WCAG AAA ✓ Pass

Any Text WCAG AAA ✓ Pass

If you want to check with other color combinations, try the [Color Contrast Checker](#).

XYZ 60.2103, 62.0074, 58.0854

Background



This preview shows how black text looks on a background with the XYZ color 60.2103, 62.0074, 58.0854.



This preview shows how white text looks on a background with the XYZ color 60.2103, 62.0074,

Color Blindness Simulation

Color vision deficiency is a very complex topic, and I could not describe the different causes any better than Wikipedia does, so if you want to learn more, you should check out their [article about color blindness](#).

Dichromacy



Original Color

60.2103, 62.0074, 58.0854

Protanopia

59.3173, 62.2445, 58.7572

Deuteranopia

63.2166, 61.8084, 58.4675



Tritanopia

63.1731, 61.7960, 73.5640

Trichromacy



Original Color

60.2103, 62.0074, 58.0854

Protanomaly

59.6647, 62.0673, 58.7047

Deuteranomaly

62.0796, 61.9100, 58.5470

Tritanomaly

61.9679, 61.6504, 67.6651

Monochromacy



Original Color

60.2103, 62.0074, 58.0854

Achromatopsia

59.3074, 62.3960, 67.9493

Achromatomaly

59.4779, 62.2085, 64.1310

CSS Examples

Text

The CSS property to change the color of the text to XYZ 60.2103, 62.0074, 58.0854 is called "color". The color property can be set on classes, ids or directly on the HTML element.

This example shows how text in the color rgb(219, 204, 191) looks like.

```
.text, #text, p{  
    color:rgb(219, 204, 191)  
}
```

If you want to add a text shadow in that color use the text-shadow property, you can generate a text shadow directly with our [CSS Text Shadow Generator](#).

Here you see how black text with a 4 pixel rgb(219, 204, 191) colored shadow looks like.

```
.shadow{ text-shadow: 4px 4px 2px rgb(219, 204, 191) }
```

Border

The CSS property to change the border of an element to XYZ 60.2103, 62.0074, 58.0854 is called "border". The border property can be set on classes, ids or directly on the HTML element.

This example shows the color as border, it can be applied via the CSS property "border" or "border-color".

```
.border, #border, table{ border:4px solid rgb(219, 204, 191) }
```


If only the border color should be changed use the property `border-color`.

```
.border{ border-color:rgb(219, 204, 191) }
```

If you want to add a box shadow in that color use:

Here you see how a box with a 4 pixel `rgb(219, 204, 191)` colored shadow looks like.

```
.boxshadow{ -moz-box-shadow:4px 4px 4px  
4px rgb(219, 204, 191); -webkit-box-  
shadow:4px 4px 4px 4px rgb(219, 204, 191);  
box-shadow:4px 4px 4px 4px rgb(219, 204,  
191) }
```

Background

The CSS property to change the background color of an element to XYZ 60.2103, 62.0074, 58.0854 is called "background". The background property can be set on classes, ids or directly on the HTML element.

```
.background, #background, body{  
background: rgb(219, 204, 191) }
```

If only the background color should be changed can be used:

```
.background{ background-color: rgb(219,  
204, 191) }
```

This example shows the color as background, it is applied via the CSS property "background".

To optimize and compress your CSS code, you can use our [online CSS compressor and optimizer](#) based on csstidy. If you want to create a linear or radial gradient as background or border, check our [CSS Gradient Generator](#).

Hey! You found this booklet interesting? Support Converting Colors with the new Membership Option!

The pro membership hides all ads, plus gives you double the colors in the color bucket, and more awesome pro features!

[Learn more, Memberships starting at \\$2.50/m!](#)

**Follow me
on Twitter!**

@ConvertingColor