

Converting Colors

XYZ(60.3693, 60.3406, 58.3343)

Have a look what the booklet for
XYZ(60.3693, 60.3406, 58.3343)
contains.

XYZ(60.3693, 60.3406, 58.3343)	3
<i>Conversions</i>	4
<i>Details</i>	6
<i>Harmonies</i>	12
<i>Previews</i>	24
<i>Color Blindness Simulation</i>	28
<i>CSS Examples</i>	31

Color

**XYZ(60.3693, 60.3406,
58.3343)**

Conversions

Conversions Part 1

Format	Color
Hex	DFC7C0
RGB	223, 199, 192
RGB Percent	87%, 78%, 75%
CMY	0.1255, 0.2196, 0.2471
CMYK	0.00, 0.11, 0.14, 0.13
HSL	14°, 33%, 81%
HSV	14°, 14%, 87%
XYZ	60.3693, 60.3406, 58.3343
YIQ	205.3780, 16.5510, 2.9110

Conversions

Conversions Part 2

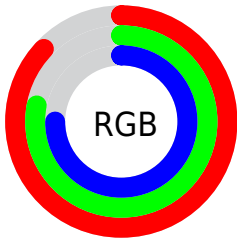
Format	Color
R _Y B	223, 201, 192
Decimal	14665664
CIE Lab	82.02, 7.28, 6.57
CIE LCh	82, 9.808, 42.044
Yxy	60.3406, 0.3372, 0.3370
Android (android.graphics.Color)	4292855744 (0xFFDFC7C0)
YUV	205.3780, -6.5954, 15.4545
Hunter-Lab	77.6792, 2.7847, 9.8508

Details

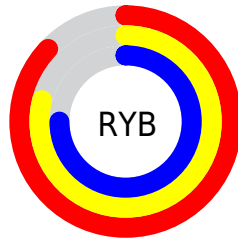
The XYZ color **60.3693, 60.3406, 58.3343** is a light color, and the websafe version is hex **CCCCCC**. A complement of this color would be **59.6131, 65.6446, 79.3414**, and the grayscale version is **58.3037, 61.3400, 66.7993**.

A 20% lighter version of the original color is **93.9433, 99.5573, 103.0721**, and **30.9340, 30.4397, 28.6711** is the 20% darker color. If you saturate the color by 10%, you get **54.3347, 51.9301, 45.0421**, and if you desaturate by 10%, it is **67.2322, 69.8073, 73.7511**.

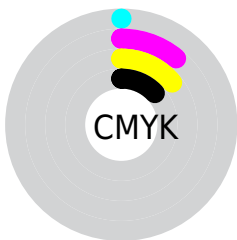
Distribution



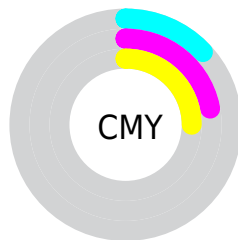
- Red (87%)
- Green (78%)
- Blue (75%)



- Red (87%)
- Yellow (79%)
- Blue (75%)



- Cyan (0%)
- Magenta (11%)
- Yellow (14%)
- Black (13%)





- Cyan (13%)
- Magenta (22%)
- Yellow (25%)

Brightness & Saturation Gradients


These gradients show how the XYZ color 60.3693, 60.3406, 58.3343 changes by changing the brightness by 10 percent. The first figure shows a shift by +10% for each color and the second figure -10%.

Similar to the brightness gradients but the following saturation gradients show a change of the XYZ color 60.3693, 60.3406, 58.3343 by changing the saturation by 10% instead.


 60.3693, 60.3406,
58.3343

 60.3693, 60.3406,
58.3343


415.7706,
425.8521, 436.0635

 43.9670, 43.6932,
41.6610


 104.4685,
105.3236, 103.9291

 30.8423, 30.4294,
28.5123


132.8961,
134.4280, 133.6877

 20.6301, 20.1647,
18.4698


166.0628,
168.4535, 168.6451

 12.9648, 12.5149,
11.1149

204.3340,
207.7846, 209.2198

 7.4811, 7.0953,
6.0290

248.0750,
252.8056, 255.8305

 3.8138, 3.5218,
2.7937

297.6512,

 1.5973, 1.4098,

303.9009, 308.8957

0.9903

353.4280,
361.4549, 368.8338

■ 0.3907, 0.2240,
0.0000

■ 0.0000, 0.0000,
0.0000

■ 60.3693, 60.3406,
58.3343

■ 60.3693, 60.3406,
58.3343

■ 54.3347, 51.9301,
45.0421

■ 67.2322, 69.8073,
73.7511

■ 49.0916, 44.5311,
33.7771

■ 74.9484, 80.3570,
91.3762

■ 44.6079, 38.1074,
24.4403

■ 82.9135, 91.7716,
107.9514

■ 40.8470, 32.6177,
16.9227

■ 84.2417, 94.4281,
108.3942

■ 37.7696, 28.0175,
11.1041

■ 35.3321, 24.2587,
6.8500

■ 33.4854, 21.2884,
4.0053

■ 32.1723, 19.0468,
2.3821

■ 31.5888, 18.0023,
1.8099

Harmonies

Analogous

The Analogous color harmony consists of three colors that are next to each other on the color wheel.



61.3472, 60.3406, 63.3426



60.3693, 60.3406, 58.3343



58.5920, 60.3406, 55.4092

Triad

The Triadic color harmony groups three colors that are evenly spaced from another and form a triangle on the color wheel.



60.3693, 60.3406, 58.3343



53.6359, 60.3406, 62.2372



58.1894, 60.3406, 77.5339

Complementary

The Complementary color scheme is a pair of colors which are on the opposite of each other on the color wheel.



60.3693, 60.3406, 58.3343



59.6131, 65.6446, 79.3414

Split Complementary

Split-complementary colors differ from the complementary color scheme. The scheme consists of three colors, the original color and two neighbors of the complement color.



56.1295, 60.3406, 77.1935



60.3693, 60.3406, 58.3343



53.5340, 60.3406, 68.1165

Square

The Square scheme is like the rectangle color scheme, but the four colors are evenly spaced on the color wheel.



60.3693, 60.3406, 58.3343



54.7186, 60.3406, 57.5672



54.4368, 60.3406, 73.6624



60.0684, 60.3406, 74.5662

Rectangle

The Rectangle color scheme consists of four colors that form a rectangle on the color wheel.



60.3693, 60.3406, 58.3343



57.2096, 60.3406, 54.9199



54.4368, 60.3406, 73.6624



57.4945, 60.3406, 77.8073

Sweetspot

The Sweet Spot groups the original color and five complimentary colors.



60.3710, 60.3433, 58.3356



90.9837, 94.4259, 99.6569



61.7131, 58.3606, 73.1708



19.3151, 19.9924, 20.9703



0.0000, 0.0000, 0.0000



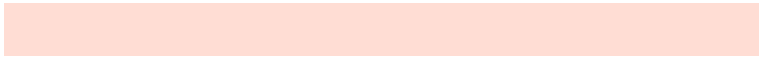
20.3446, 21.4041, 23.3091

Same Dimension

The Same Dimension uses a secret algorithm to generate beautiful new colors.



60.3710, 60.3433, 58.3356



79.0535, 77.9437, 72.9342



64.0480, 67.6974, 59.5613



13.9572, 14.2003, 14.3121



18.6437, 10.7253, 1.0876



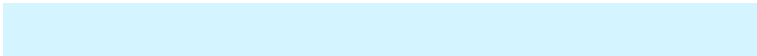
1.3593, 0.8775, 0.0977

Inverse Universe

The Inverse Universe completely reimagines the original color for something new.



59.6131, 65.6446, 79.3414



77.8152, 86.5944, 107.2208



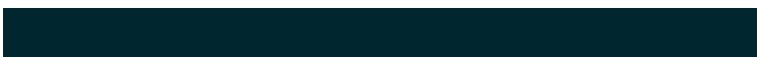
55.8945, 58.2074, 78.1019



13.8402, 15.0196, 17.5573



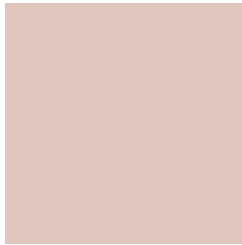
16.6634, 20.7963, 44.1842



1.2202, 1.5718, 3.0843

Previews

White Background



This preview shows how the XYZ color 60.3693, 60.3406, 58.3343 looks on a white background.

Color Contrast Check

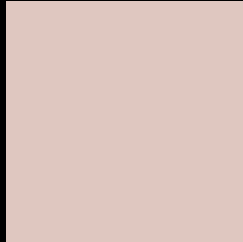
Large Text (above 18pt) WCAG AA × Fail

Any Text WCAG AA × Fail

Large Text (above 18pt) WCAG AAA × Fail

Any Text WCAG AAA × Fail

Black Background



This preview shows how the XYZ color 60.3693, 60.3406, 58.3343 looks on a black background.

Color Contrast Check

Large Text (above 18pt) WCAG AA ✓ Pass

Any Text WCAG AA ✓ Pass

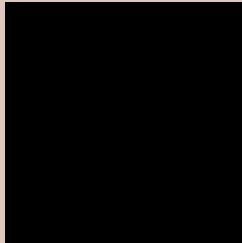
Large Text (above 18pt) WCAG AAA ✓ Pass

Any Text WCAG AAA ✓ Pass

If you want to check with other color combinations, try the [Color Contrast Checker](#).

XYZ 60.3693, 60.3406, 58.3343

Background



This preview shows how black text looks on a background with the XYZ color 60.3693, 60.3406, 58.3343.

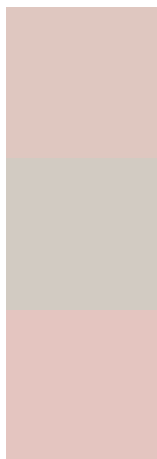


This preview shows how white text looks on a background with the XYZ color 60.3693, 60.3406,

Color Blindness Simulation

Color vision deficiency is a very complex topic, and I could not describe the different causes any better than Wikipedia does, so if you want to learn more, you should check out their [article about color blindness](#).

Dichromacy



Original Color

60.3693, 60.3406, 58.3343

Protanopia

57.6719, 60.3086, 59.6400

Deuteranopia

61.4756, 60.2323, 58.2550



Tritanopia

62.8618, 60.3518, 69.9639

Trichromacy



Original Color

60.3693, 60.3406, 58.3343

Protanomaly

58.7705, 60.5384, 59.0396

Deuteranomaly

61.0725, 60.3627, 58.3015

Tritanomaly

61.9167, 60.2997, 65.5024

Monochromacy



Original Color

60.3693, 60.3406, 58.3343

Achromatopsia

58.0276, 61.0496, 66.4830

Achromatomaly

58.9326, 60.8791, 63.2883

CSS Examples

Text

The CSS property to change the color of the text to XYZ 60.3693, 60.3406, 58.3343 is called "color". The color property can be set on classes, ids or directly on the HTML element.

This example shows how text in the color `rgb(223, 199, 192)` looks like.

```
.text, #text, p{  
    color:rgb(223, 199, 192)  
}
```

If you want to add a text shadow in that color use the text-shadow property, you can generate a text shadow directly with our [CSS Text Shadow Generator](#).

Here you see how black text with a 4 pixel rgb(223, 199, 192) colored shadow looks like.

```
.shadow{ text-shadow: 4px 4px 2px rgb(223, 199, 192) }
```

Border

The CSS property to change the border of an element to XYZ 60.3693, 60.3406, 58.3343 is called "border". The border property can be set on classes, ids or directly on the HTML element.

This example shows the color as border, it can be applied via the CSS property "border" or "border-color".

```
.border, #border, table{ border:4px solid rgb(223, 199, 192) }
```


If only the border color should be changed use the property `border-color`.

```
.border{ border-color:rgb(223, 199, 192) }
```

If you want to add a box shadow in that color use:

Here you see how a box with a 4 pixel `rgb(223, 199, 192)` colored shadow looks like.

```
.boxshadow{ -moz-box-shadow:4px 4px 4px  
4px rgb(223, 199, 192); -webkit-box-  
shadow:4px 4px 4px 4px rgb(223, 199, 192);  
box-shadow:4px 4px 4px 4px rgb(223, 199,  
192) }
```

Background

The CSS property to change the background color of an element to XYZ 60.3693, 60.3406, 58.3343 is called "background". The background property can be set on classes, ids or directly on the HTML element.

```
.background, #background, body{  
background: rgb(223, 199, 192) }
```

If only the background color should be changed can be used:

```
.background{ background-color: rgb(223,  
199, 192) }
```

This example shows the color as background, it is applied via the CSS property "background".

To optimize and compress your CSS code, you can use our [online CSS compressor and optimizer](#) based on csstidy. If you want to create a linear or radial gradient as background or border, check our [CSS Gradient Generator](#).

Hey! You found this booklet interesting? Support Converting Colors with the new Membership Option!

The pro membership hides all ads, plus gives you double the colors in the color bucket, and more awesome pro features!

[Learn more, Memberships starting at \\$2.50/m!](#)

**Follow me
on Twitter!**

@ConvertingColor