

# Converting Colors

XYZ(60.3798, 58.3190, 58.5384)

Have a look what the booklet for  
XYZ(60.3798, 58.3190, 58.5384)  
contains.

<b>XYZ(60.3742, 58.3211, 58.5271)</b> .....	3
<b><i>Conversions</i></b> .....	4
<b><i>Details</i></b> .....	6
<b><i>Harmonies</i></b> .....	12
<b><i>Previews</i></b> .....	24
<b><i>Color Blindness Simulation</i></b> .....	28
<b><i>CSS Examples</i></b> .....	31

# Color

**XYZ(60.3742, 58.3211,  
58.5271)**

# Conversions

## Conversions Part 1

Format	Color
Hex	E3C1C1
RGB	227, 193, 193
RGB Percent	89%, 76%, 76%
CMY	0.1098, 0.2431, 0.2431
CMYK	0.00, 0.15, 0.15, 0.11
HSL	0°, 38%, 82%
HSV	0°, 15%, 89%
XYZ	60.3742, 58.3211, 58.5271
YIQ	203.1660, 20.2640, 7.2080

# Conversions

## Conversions Part 2

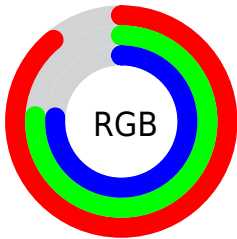
Format	Color
R <sub>Y</sub> B	227, 193, 193
Decimal	14926273
CIE Lab	80.92, 12.06, 4.48
CIE LCh	81, 12.868, 20.386
Yxy	58.3211, 0.3407, 0.3291
Android (android.graphics.Color)	4293116353 (0xFFE3C1C1)
YUV	203.1660, -5.0118, 20.9024
Hunter-Lab	76.3683, 7.4717, 8.0191

# Details

The XYZ color **60.3742, 58.3211, 58.5271** is a light color, and the websafe version is hex **FFCCCC**. A complement of this color would be **63.3261, 71.8202, 83.1988**, and the grayscale version is **56.8920, 59.8548, 65.1818**.

A 20% lighter version of the original color is **92.2146, 95.8509, 103.2634**, and **30.7608, 29.0166, 28.7904** is the 20% darker color. If you saturate the color by 10%, you get **53.3956, 48.1099, 44.6517**, and if you desaturate by 10%, it is **68.5147, 70.2331, 74.7088**.

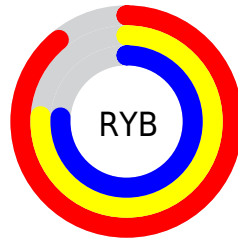
# Distribution



Red (89%)

Green (76%)

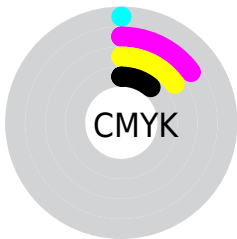
Blue (76%)



Red (89%)

Yellow (76%)

Blue (76%)

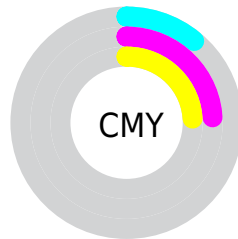


Cyan (0%)

Magenta (15%)

Yellow (15%)

Black (11%)



Cyan (11%)

Magenta (24%)


Yellow (24%)


# Brightness & Saturation Gradients

These gradients show how the XYZ color 60.3742, 58.3211, 58.5271 changes by changing the brightness by 10 percent. The first figure shows a shift by +10% for each color and the second figure -10%.


Similar to the brightness gradients but the following saturation gradients show a change of the XYZ color 60.3742, 58.3211, 58.5271 by changing the saturation by 10% instead.





 60.3742, 58.3211,  
58.5271

 60.3742, 58.3211,  
58.5271


415.7884,  
418.3814, 436.8002

 43.9709, 42.0668,  
41.8151

 104.4756,  
102.3903, 104.2124

 30.8455, 29.1536,  
28.6320


132.9044,  
130.9741, 134.0227

 20.6325, 19.1971,  
18.5594


166.0724,  
164.4364, 169.0362

 12.9665, 11.8128,  
11.1788

204.3450,  
203.1618, 209.6714

 7.4823, 6.6163,  
6.0715

248.0876,  
247.5346, 256.3469

 3.8145, 3.2233,  
2.8191

297.6654,

 1.5978, 1.2494,

297.9392, 309.4811

1.0030

353.4439,  
354.7600, 369.4927

0.3909, 0.1015,  
0.0000

0.0000, 0.0000,  
0.0000

60.3742, 58.3211,  
58.5271

60.3742, 58.3211,  
58.5271

53.3956, 48.1099,  
44.6517

68.5147, 70.2331,  
74.7088

47.5216, 39.5145,  
32.9741

77.8617, 83.9101,  
93.2911

42.6969, 32.4545,  
23.3829

85.4888, 95.0710,  
108.4525

38.8597, 26.8396,  
15.7551

■ 35.9420, 22.5700,  
9.9552

■ 33.8667, 19.5331,  
5.8302

■ 32.5446, 17.5983,  
3.2025

■ 31.8662, 16.6054,  
1.8545

■ 31.6791, 16.3316,  
1.4826

# Harmonies

## Analogous

The Analogous color harmony consists of three colors that are next to each other on the color wheel.



60.6381, 58.3211, 65.9835



60.3742, 58.3211, 58.5271



58.7632, 58.3211, 52.8572

# Triad

The Triadic color harmony groups three colors that are evenly spaced from another and form a triangle on the color wheel.



60.3742, 58.3211, 58.5271



51.5791, 58.3211, 54.5993



54.5813, 58.3211, 79.0926

# Complementary

The Complementary color scheme is a pair of colors which are on the opposite of each other on the color wheel.



60.3742, 58.3211, 58.5271



63.3261, 71.8202, 83.1988

# Split Complementary

Split-complementary colors differ from the complementary color scheme. The scheme consists of three colors, the original color and two neighbors of the complement color.



52.2300, 58.3211, 75.4873



60.3742, 58.3211, 58.5271



50.5336, 58.3211, 61.0830

# Square

The Square scheme is like the rectangle color scheme, but the four colors are evenly spaced on the color wheel.



60.3742, 58.3211, 58.5271



53.6671, 58.3211, 50.7187



50.7680, 58.3211, 68.7506



57.2361, 58.3211, 78.2702



# Rectangle

The Rectangle color scheme consists of four colors that form a rectangle on the color wheel.



60.3742, 58.3211, 58.5271



57.1698, 58.3211, 50.6605



50.7680, 58.3211, 68.7506



53.7306, 58.3211, 78.3480

# Sweetspot

The Sweet Spot groups the original color and five complimentary colors.



60.3758, 58.3237, 58.5283



90.2832, 93.0250, 99.4234



64.6144, 60.0177, 80.8527



19.1386, 19.6394, 20.9114



0.0000, 0.0000, 0.0000



20.3446, 21.4041, 23.3091



# Same Dimension

The Same Dimension uses a secret algorithm to generate beautiful new colors.



60.3758, 58.3237, 58.5283



75.5874, 71.5212, 70.2076



64.3515, 66.2751, 59.8536



14.3772, 14.3683, 14.9200



18.4753, 9.5247, 0.8647



1.3653, 0.7039, 0.0639

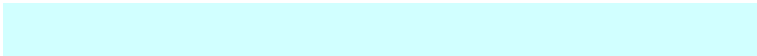


# Inverse Universe

The Inverse Universe completely reimagines the original color for something new.



63.3261, 71.8202, 83.1988



80.1310, 92.3064, 108.2013



58.9048, 62.9775, 81.7250



14.8074, 16.3361, 18.5171



24.1019, 35.2660, 47.9199

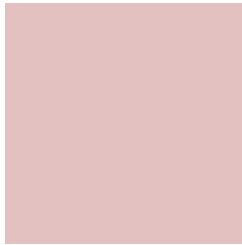


1.7811, 2.6061, 3.5411



# Previews

## White Background



This preview shows how the XYZ color 60.3742, 58.3211, 58.5271 looks on a white background.

## Color Contrast Check

Large Text (above 18pt) WCAG AA × Fail

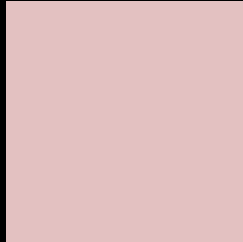
Any Text WCAG AA × Fail

Large Text (above 18pt) WCAG AAA × Fail

Any Text WCAG AAA × Fail



# Black Background



This preview shows how the XYZ color 60.3742, 58.3211, 58.5271 looks on a black background.

## Color Contrast Check

Large Text (above 18pt) WCAG AA ✓ Pass

Any Text WCAG AA ✓ Pass

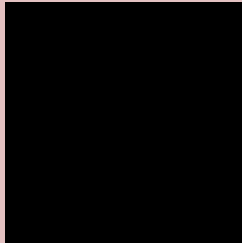
Large Text (above 18pt) WCAG AAA ✓ Pass

Any Text WCAG AAA ✓ Pass

If you want to check with other color combinations, try the [Color Contrast Checker](#).

**XYZ 60.3742, 58.3211, 58.5271**

## **Background**



This preview shows how black text looks on a background with the XYZ color 60.3742, 58.3211, 58.5271.



This preview shows how white text looks on a background with the XYZ color 60.3742, 58.3211,

58.5271.

# Color Blindness Simulation

Color vision deficiency is a very complex topic, and I could not describe the different causes any better than Wikipedia does, so if you want to learn more, you should check out their [article about color blindness](#).

## Dichromacy



### Original Color

60.3742, 58.3211, 58.5271

### Protanopia

56.1859, 58.4616, 61.1462

### Deuteranopia

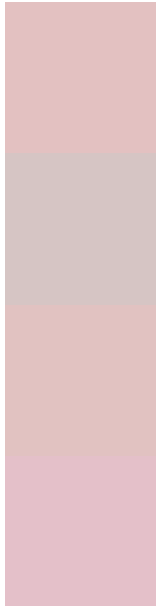
59.6579, 58.2811, 58.5571



## Tritanopia

62.0845, 58.3758, 66.3880

# Trichromacy



## Original Color

60.3742, 58.3211, 58.5271

## Protanomaly

57.6616, 58.2142, 60.4219

## Deuteranomaly

59.9688, 58.4414, 58.5717

## Tritanomaly

61.3872, 58.4103, 63.2972

# Monochromacy



## Original Color

60.3742, 58.3211, 58.5271

## Achromatopsia

56.7640, 59.7202, 65.0353

## Achromatomaly

57.8836, 58.9674, 62.3639

# CSS Examples

## Text

The CSS property to change the color of the text to XYZ 60.3742, 58.3211, 58.5271 is called "color". The color property can be set on classes, ids or directly on the HTML element.

This example shows how text in the color `rgb(227, 193, 193)` looks like.

```
.text, #text, p{  
    color:rgb(227, 193, 193)  
}
```

If you want to add a text shadow in that color use the text-shadow property, you can generate a text shadow directly with our [CSS Text Shadow Generator](#).

Here you see how black text with a 4 pixel rgb(227, 193, 193) colored shadow looks like.

```
.shadow{ text-shadow: 4px 4px 2px rgb(227, 193, 193) }
```

## Border

The CSS property to change the border of an element to XYZ 60.3742, 58.3211, 58.5271 is called "border". The border property can be set on classes, ids or directly on the HTML element.

This example shows the color as border, it can be applied via the CSS property "border" or "border-color".

```
.border, #border, table{ border:4px solid rgb(227, 193, 193) }
```



If only the border color should be changed use the property border-color.

```
.border{ border-color:rgb(227, 193, 193) }
```

If you want to add a box shadow in that color use:

Here you see how a box with a 4 pixel rgb(227, 193, 193) colored shadow looks like.

```
.boxshadow{ -moz-box-shadow:4px 4px 4px  
4px rgb(227, 193, 193); -webkit-box-  
shadow:4px 4px 4px 4px rgb(227, 193, 193);  
box-shadow:4px 4px 4px 4px rgb(227, 193,  
193) }
```

# Background

The CSS property to change the background color of an element to XYZ 60.3742, 58.3211, 58.5271 is called "background". The background property can be set on classes, ids or directly on the HTML element.

```
.background, #background, body{  
background: rgb(227, 193, 193) }
```

If only the background color should be changed can be used:

```
.background{ background-color: rgb(227,  
193, 193) }
```

This example shows the color as background, it is applied via the CSS property "background".

To optimize and compress your CSS code, you can use our [online CSS compressor and optimizer](#) based on csstidy. If you want to create a linear or radial gradient as background or border, check our [CSS Gradient Generator](#).

Hey! You found this booklet interesting? Support Converting Colors with the new Membership Option!

The pro membership hides all ads, plus gives you double the colors in the color bucket, and more awesome pro features!

**[Learn more, Memberships starting at \\$2.50/m!](#)**

**Follow me  
on Twitter!**

@ConvertingColor