

Converting Colors

XYZ(60.3804, 61.5636, 59.6009)

Have a look what the booklet for
XYZ(60.3804, 61.5636, 59.6009)
contains.

XYZ(60.6087, 61.8226, 59.7775)	3
<i>Conversions</i>	4
<i>Details</i>	6
<i>Harmonies</i>	12
<i>Previews</i>	24
<i>Color Blindness Simulation</i>	28
<i>CSS Examples</i>	31

Color

**XYZ(60.6087, 61.8226,
59.7775)**

Conversions

Conversions Part 1

Format	Color
Hex	DCCBC2
RGB	220, 203, 194
RGB Percent	86%, 80%, 76%
CMY	0.1373, 0.2039, 0.2392
CMYK	0.00, 0.08, 0.12, 0.14
HSL	21°, 27%, 81%
HSV	21°, 12%, 86%
XYZ	60.6087, 61.8226, 59.7775
YIQ	207.0570, 13.0210, 0.8050

Conversions

Conversions Part 2

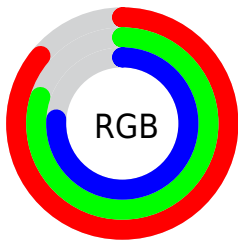
Format	Color
RYB	220, 208, 194
Decimal	14470082
CIELab	82.82, 4.42, 6.61
CIELCh	83, 7.953, 56.240
Yxy	61.8226, 0.3326, 0.3393
Android (android.graphics.Color)	4292660162 (0xFFDCCBC2)
YUV	207.0570, -6.4371, 11.3510
Hunter-Lab	78.6273, -0.0038, 9.9631

Details

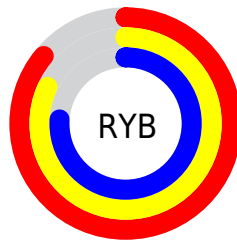
The XYZ color **60.6087, 61.8226, 59.7775** is a light color, and the websafe version is hex **CCCCCC**. A complement of this color would be **58.4603, 63.2237, 76.8328**, and the grayscale version is **59.3806, 62.4730, 68.0331**.

A 20% lighter version of the original color is **94.2553, 99.6821, 104.7153**, and **30.9981, 31.3877, 29.2356** is the 20% darker color. If you saturate the color by 10%, you get **55.0788, 54.4282, 46.6332**, and if you desaturate by 10%, it is **66.8229, 69.9989, 74.9560**.

Distribution



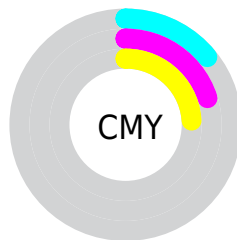
- Red (86%)
- Green (80%)
- Blue (76%)



- Red (86%)
- Yellow (82%)
- Blue (76%)



- Cyan (0%)
- Magenta (8%)
- Yellow (12%)
- Black (14%)



- Cyan (14%)
- Magenta (20%)
- Yellow (24%)

Brightness & Saturation Gradients

These gradients show how the XYZ color 60.6087, 61.8226, 59.7775 changes by changing the brightness by 10 percent. The first figure shows a shift by +10% for each color and the second figure -10%.

Similar to the brightness gradients but the following saturation gradients show a change of the XYZ color 60.6087, 61.8226, 59.7775 by changing the saturation by 10% instead.

60.6087, 61.8226,
59.7775

60.6087, 61.8226,
59.7775

416.6367,
431.2837, 441.5590

44.1608, 44.8894,
42.8152

104.8135,
107.4691, 106.0470

30.9954, 31.3703,
29.4098

133.3011,
136.9512, 136.1914

20.7471, 20.8810,
19.1428

166.5326,
171.3849, 171.5668

13.0507, 13.0370,
11.5957

204.8734,
211.1549, 212.5918

7.5407, 7.4541,
6.3498

248.6889,
256.6453, 259.6850

3.8518, 3.7476,
2.9867

298.3443,

1.6186, 1.5334,

308.2407, 313.2649

1.0879

354.2051,
366.3253, 373.7501

■ 0.4045, 0.3121,
0.0000

■ 0.0000, 0.0000,
0.0000

■ 60.6087, 61.8226,
59.7775

■ 60.6087, 61.8226,
59.7775

■ 55.0788, 54.4282,
46.6332

■ 66.8229, 69.9989,
74.9560

■ 50.2037, 47.7841,
35.4320

■ 73.7395, 78.9713,
92.2467

■ 45.9587, 41.8682,
26.0816

■ 80.5664, 88.4377,
107.4316

■ 42.3161, 36.6546,
18.4808

■ 83.3254, 93.9557,
108.3513

■ 39.2455, 32.1155,
12.5182

■ 36.7136, 28.2209,
8.0698

■ 34.6831, 24.9384,
4.9932

■ 33.1108, 22.2319,
3.1184

■ 32.1130, 20.4109,
2.2472

Harmonies

Analogous

The Analogous color harmony consists of three colors that are next to each other on the color wheel.



61.7625, 61.8226, 63.2319



60.6087, 61.8226, 59.7775



58.9766, 61.8226, 58.3393

Triad

The Triadic color harmony groups three colors that are evenly spaced from another and form a triangle on the color wheel.



60.6087, 61.8226, 59.7775



55.5369, 61.8226, 66.6980



60.2278, 61.8226, 76.1284

Complementary

The Complementary color scheme is a pair of colors which are on the opposite of each other on the color wheel.



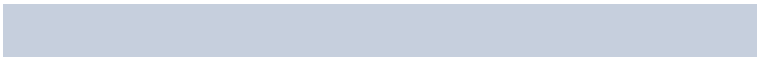
60.6087, 61.8226, 59.7775



58.4603, 63.2237, 76.8328

Split Complementary

Split-complementary colors differ from the complementary color scheme. The scheme consists of three colors, the original color and two neighbors of the complement color.



58.5449, 61.8226, 77.1655



60.6087, 61.8226, 59.7775



55.8574, 61.8226, 71.5687

Square

The Square scheme is like the rectangle color scheme, but the four colors are evenly spaced on the color wheel.



60.6087, 61.8226, 59.7775



56.0663, 61.8226, 62.2105



56.9503, 61.8226, 75.4594



61.5397, 61.8226, 72.6899

Rectangle

The Rectangle color scheme consists of four colors that form a rectangle on the color wheel.



60.6087, 61.8226, 59.7775



57.8448, 61.8226, 58.6634



56.9503, 61.8226, 75.4594



59.6858, 61.8226, 76.7764

Sweetspot

The Sweet Spot groups the original color and five complimentary colors.



60.6104, 61.8253, 59.7788



91.3606, 95.1798, 99.7825



60.6073, 58.5199, 69.9491



19.4102, 20.1827, 21.0020



0.0000, 0.0000, 0.0000



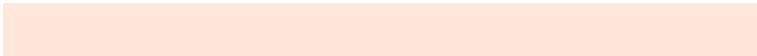
20.3446, 21.4041, 23.3091

Same Dimension

The Same Dimension uses a secret algorithm to generate beautiful new colors.



60.6104, 61.8253, 59.7788



82.8277, 83.9143, 79.0567



63.7239, 68.0523, 60.8167



13.4230, 13.7853, 13.6789



18.9407, 12.1671, 1.3502



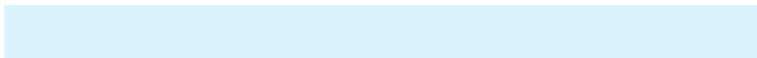
1.3060, 0.9460, 0.1138

Inverse Universe

The Inverse Universe completely reimagines the original color for something new.



58.4603, 63.2237, 76.8328



79.2956, 86.2104, 107.0687



55.4376, 57.1782, 75.8252



13.0455, 14.0308, 16.6728



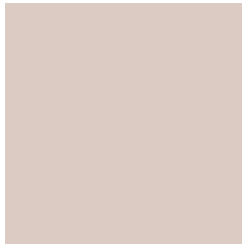
13.5257, 14.9207, 41.9055



0.9555, 1.1252, 2.7413

Previews

White Background



This preview shows how the XYZ color 60.6087, 61.8226, 59.7775 looks on a white background.

Color Contrast Check

Large Text (above 18pt) WCAG AA × Fail

Any Text WCAG AA × Fail

Large Text (above 18pt) WCAG AAA × Fail

Any Text WCAG AAA × Fail

Black Background



This preview shows how the XYZ color 60.6087, 61.8226, 59.7775 looks on a black background.

Color Contrast Check

Large Text (above 18pt) WCAG AA ✓ Pass

Any Text WCAG AA ✓ Pass

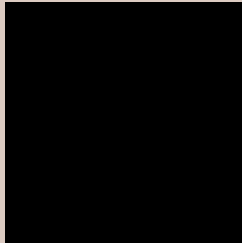
Large Text (above 18pt) WCAG AAA ✓ Pass

Any Text WCAG AAA ✓ Pass

If you want to check with other color combinations, try the [Color Contrast Checker](#).

XYZ 60.6087, 61.8226, 59.7775

Background



This preview shows how black text looks on a background with the XYZ color 60.6087, 61.8226, 59.7775.

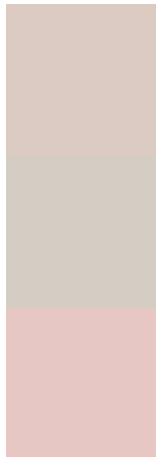


This preview shows how white text looks on a background with the XYZ color 60.6087, 61.8226,

Color Blindness Simulation

Color vision deficiency is a very complex topic, and I could not describe the different causes any better than Wikipedia does, so if you want to learn more, you should check out their [article about color blindness](#).

Dichromacy



Original Color

60.6087, 61.8226, 59.7775

Protanopia

58.8330, 61.5998, 60.4189

Deuteranopia

62.9069, 61.6100, 60.2061



Tritanopia

63.3514, 61.9028, 72.8994

Trichromacy



Original Color

60.6087, 61.8226, 59.7775

Protanomaly

59.4675, 61.5729, 60.3802

Deuteranomaly

61.8686, 61.4174, 60.2237

Tritanomaly

62.2733, 61.8079, 67.6794

Monochromacy



Original Color

60.6087, 61.8226, 59.7775

Achromatopsia

59.3074, 62.3960, 67.9493

Achromatomaly

59.8834, 62.4039, 64.7661

CSS Examples

Text

The CSS property to change the color of the text to XYZ 60.6087, 61.8226, 59.7775 is called "color". The color property can be set on classes, ids or directly on the HTML element.

This example shows how text in the color `rgb(220, 203, 194)` looks like.

```
.text, #text, p{  
    color:rgb(220, 203, 194)  
}
```

If you want to add a text shadow in that color use the text-shadow property, you can generate a text shadow directly with our [CSS Text Shadow Generator](#).

Here you see how black text with a 4 pixel rgb(220, 203, 194) colored shadow looks like.

```
.shadow{ text-shadow: 4px 4px 2px rgb(220, 203, 194) }
```

Border

The CSS property to change the border of an element to XYZ 60.6087, 61.8226, 59.7775 is called "border". The border property can be set on classes, ids or directly on the HTML element.

This example shows the color as border, it can be applied via the CSS property "border" or "border-color".

```
.border, #border, table{ border:4px solid rgb(220, 203, 194) }
```


If only the border color should be changed use the property `border-color`.

```
.border{ border-color:rgb(220, 203, 194) }
```

If you want to add a box shadow in that color use:

Here you see how a box with a 4 pixel `rgb(220, 203, 194)` colored shadow looks like.

```
.boxshadow{ -moz-box-shadow:4px 4px 4px  
4px rgb(220, 203, 194); -webkit-box-  
shadow:4px 4px 4px 4px rgb(220, 203, 194);  
box-shadow:4px 4px 4px 4px rgb(220, 203,  
194) }
```

Background

The CSS property to change the background color of an element to XYZ 60.6087, 61.8226, 59.7775 is called "background". The background property can be set on classes, ids or directly on the HTML element.

```
.background, #background, body{  
background: rgb(220, 203, 194) }
```

If only the background color should be changed can be used:

```
.background{ background-color: rgb(220,  
203, 194) }
```

This example shows the color as background, it is applied via the CSS property "background".

To optimize and compress your CSS code, you can use our [online CSS compressor and optimizer](#) based on csstidy. If you want to create a linear or radial gradient as background or border, check our [CSS Gradient Generator](#).

Hey! You found this booklet interesting? Support Converting Colors with the new Membership Option!

The pro membership hides all ads, plus gives you double the colors in the color bucket, and more awesome pro features!

[Learn more, Memberships starting at \\$2.50/m!](#)

**Follow me
on Twitter!**

@ConvertingColor