

Converting Colors

XYZ(60.5084, 59.5615, 67.5480)

Have a look what the booklet for
XYZ(60.5084, 59.5615, 67.5480)
contains.

XYZ(60.4422, 59.4976, 67.3300)	3
<i>Conversions</i>	4
<i>Details</i>	6
<i>Harmonies</i>	12
<i>Previews</i>	24
<i>Color Blindness Simulation</i>	28
<i>CSS Examples</i>	31

Color

**XYZ(60.4422, 59.4976,
67.3300)**

Conversions

Conversions Part 1

Format	Color
Hex	DBC5CF
RGB	219, 197, 207
RGB Percent	86%, 77%, 81%
CMY	0.1412, 0.2274, 0.1882
CMYK	0.00, 0.10, 0.05, 0.14
HSL	333°, 23%, 82%
HSV	333°, 10%, 86%
XYZ	60.4422, 59.4976, 67.3300
YIQ	204.7180, 9.9020, 7.7740

Conversions

Conversions Part 2

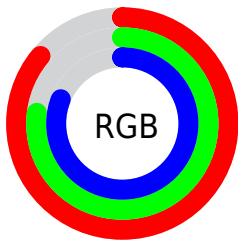
Format	Color
R _Y B	219, 197, 207
Decimal	14403023
CIE Lab	81.56, 9.43, -2.18
CIE LCh	82, 9.681, 347.008
Yxy	59.4976, 0.3228, 0.3177
Android (android.graphics.Color)	4292593103 (0xFFDBC5CF)
YUV	204.7180, 1.1250, 12.5253
Hunter-Lab	77.1347, 4.8856, 2.2407

Details

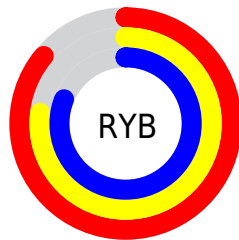
The XYZ color **60.4422, 59.4976, 67.3300** is a light color, and the websafe version is hex **CCCCCC**. A complement of this color would be **59.8685, 67.1385, 70.1286**, and the grayscale version is **57.8393, 60.8515, 66.2673**.

A 20% lighter version of the original color is **94.7318, 99.3636, 108.7939**, and **30.8821, 29.8373, 34.2685** is the 20% darker color. If you saturate the color by 10%, you get **54.4206, 49.7037, 58.3871**, and if you desaturate by 10%, it is **67.3001, 70.7857, 77.0985**.

Distribution



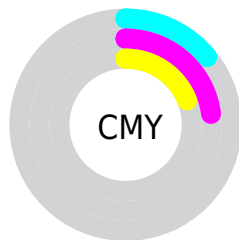
- Red (86%)
- Green (77%)
- Blue (81%)



- Red (86%)
- Yellow (77%)
- Blue (81%)



- Cyan (0%)
- Magenta (10%)
- Yellow (5%)
- Black (14%)



- Cyan (14%)
- Magenta (23%)
- Yellow (19%)

Brightness & Saturation Gradients

These gradients show how the XYZ color 60.4422, 59.4976, 67.3300 changes by changing the brightness by 10 percent. The first figure shows a shift by +10% for each color and the second figure -10%.

Similar to the brightness gradients but the following saturation gradients show a change of the XYZ color 60.4422, 59.4976, 67.3300 by changing the saturation by 10% instead.

60.4422, 59.4976,
67.3300

60.4422, 59.4976,
67.3300

416.0345,
422.7435, 469.6519

44.0260, 43.0138,
48.8896

104.5736,
104.1005, 117.0383

30.8889, 29.8960,
34.1669

133.0194,
132.9885, 149.1432

20.6657, 19.7596,
22.7435

166.2059,
166.7799, 186.6401

12.9909, 12.2204,
14.2007

204.4983,
205.8592, 229.9474

7.4993, 6.8940,
8.1200

248.2620,
250.6109, 279.4837

3.8253, 3.3959,
4.0830

297.8623,

1.6038, 1.3417,

301.4192, 335.6675

1.6710

353.6647,
358.6686, 398.9174

■ 0.3949, 0.1732,
0.3407

■ 0.0000, 0.0000,
0.0000

■ 60.4422, 59.4976,
67.3300

■ 60.4422, 59.4976,
67.3300

■ 54.4206, 49.7037,
58.3871

■ 67.3001, 70.7857,
77.0985

■ 49.1969, 41.3332,
50.2428

■ 75.0208, 83.6194,
87.7109

■ 44.7369, 34.3212,
42.8740

■ 81.1280, 93.0419,
98.3537

■ 41.0020, 28.5946,
36.2551

■ 82.9903, 93.7869,
108.1608

■ 37.9501, 24.0735,
30.3586

■ 83.0238, 93.8003,
108.3372

■ 35.5344, 20.6688,
25.1549

■ 33.7017, 18.2790,
20.6118

■ 32.3894, 16.7836,
16.6930

■ 31.4911, 15.9712,
13.3594

Harmonies

Analogous

The Analogous color harmony consists of three colors that are next to each other on the color wheel.



59.4557, 59.4976, 72.7130



60.4422, 59.4976, 67.3300



60.3682, 59.4976, 61.5659

Triad

The Triadic color harmony groups three colors that are evenly spaced from another and form a triangle on the color wheel.



60.4422, 59.4976, 67.3300



55.4160, 59.4976, 54.6648



53.9291, 59.4976, 73.3133

Complementary

The Complementary color scheme is a pair of colors which are on the opposite of each other on the color wheel.



60.4422, 59.4976, 67.3300



59.8685, 67.1385, 70.1286

Split Complementary

Split-complementary colors differ from the complementary color scheme. The scheme consists of three colors, the original color and two neighbors of the complement color.



52.8976, 59.4976, 68.1098



60.4422, 59.4976, 67.3300



53.7418, 59.4976, 57.4511

Square

The Square scheme is like the rectangle color scheme, but the four colors are evenly spaced on the color wheel.



60.4422, 59.4976, 67.3300



57.4332, 59.4976, 54.4838



52.8299, 59.4976, 62.3006



55.6772, 59.4976, 76.3041

Rectangle

The Rectangle color scheme consists of four colors that form a rectangle on the color wheel.



60.4422, 59.4976, 67.3300



59.7271, 59.4976, 58.2807



52.8299, 59.4976, 62.3006



53.4889, 59.4976, 71.7513

Sweetspot

The Sweet Spot groups the original color and five complimentary colors.



60.4439, 59.5002, 67.3313



91.9931, 94.9499, 104.6021



58.9738, 58.5663, 75.2149



19.5195, 20.0415, 22.1472



0.0000, 0.0000, 0.0000



20.3446, 21.4041, 23.3091

Same Dimension

The Same Dimension uses a secret algorithm to generate beautiful new colors.



60.4439, 59.5002, 67.3313



83.4809, 80.9776, 92.3553



59.4268, 59.3604, 61.1520



13.3009, 13.1494, 14.8455



18.7262, 9.4915, 8.2044



1.2563, 0.6321, 0.7584

Inverse Universe

The Inverse Universe completely reimagines the original color for something new.



60.4439, 59.5002, 67.3313



83.4809, 80.9776, 92.3553



60.9547, 67.2675, 76.7900



13.3009, 13.1494, 14.8455



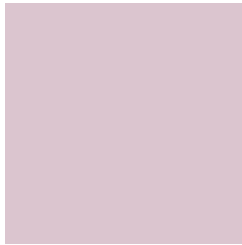
18.7262, 9.4915, 8.2044



1.2563, 0.6321, 0.7584

Previews

White Background



This preview shows how the XYZ color 60.4422, 59.4976, 67.3300 looks on a white background.

Color Contrast Check

Large Text (above 18pt) WCAG AA × Fail

Any Text WCAG AA × Fail

Large Text (above 18pt) WCAG AAA × Fail

Any Text WCAG AAA × Fail

Black Background



This preview shows how the XYZ color 60.4422, 59.4976, 67.3300 looks on a black background.

Color Contrast Check

Large Text (above 18pt) WCAG AA ✓ Pass

Any Text WCAG AA ✓ Pass

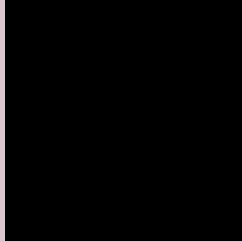
Large Text (above 18pt) WCAG AAA ✓ Pass

Any Text WCAG AAA ✓ Pass

If you want to check with other color combinations, try the [Color Contrast Checker](#).

XYZ 60.4422, 59.4976, 67.3300

Background



This preview shows how black text looks on a background with the XYZ color 60.4422, 59.4976, 67.3300.



This preview shows how white text looks on a background with the XYZ color 60.4422, 59.4976,

67.3300.

Color Blindness Simulation

Color vision deficiency is a very complex topic, and I could not describe the different causes any better than Wikipedia does, so if you want to learn more, you should check out their [article about color blindness](#).

Dichromacy



Original Color

60.4422, 59.4976, 67.3300

Protanopia

57.6552, 59.7316, 69.4634

Deuteranopia

60.7439, 59.6531, 67.3441



Tritanopia

61.1388, 59.4490, 70.5398

Trichromacy



Original Color

60.4422, 59.4976, 67.3300

Protanomaly

58.4574, 59.4673, 68.7189

Deuteranomaly

60.7439, 59.6531, 67.3441

Tritanomaly

60.8880, 59.3486, 69.2191

Monochromacy



Original Color

60.4422, 59.4976, 67.3300

Achromatopsia

58.0276, 61.0496, 66.4830

Achromatomaly

58.8395, 60.3989, 66.9495

CSS Examples

Text

The CSS property to change the color of the text to XYZ 60.4422, 59.4976, 67.3300 is called "color". The color property can be set on classes, ids or directly on the HTML element.

This example shows how text in the color `rgb(219, 197, 207)` looks like.

```
.text, #text, p{  
    color:rgb(219, 197, 207)  
}
```

If you want to add a text shadow in that color use the text-shadow property, you can generate a text shadow directly with our [CSS Text Shadow Generator](#).

Here you see how black text with a 4 pixel rgb(219, 197, 207) colored shadow looks like.

```
.shadow{ text-shadow: 4px 4px 2px rgb(219, 197, 207) }
```

Border

The CSS property to change the border of an element to XYZ 60.4422, 59.4976, 67.3300 is called "border". The border property can be set on classes, ids or directly on the HTML element.

This example shows the color as border, it can be applied via the CSS property "border" or "border-color".

```
.border, #border, table{ border:4px solid rgb(219, 197, 207) }
```


If only the border color should be changed use the property `border-color`.

```
.border{ border-color:rgb(219, 197, 207) }
```

If you want to add a box shadow in that color use:

Here you see how a box with a 4 pixel `rgb(219, 197, 207)` colored shadow looks like.

```
.boxshadow{ -moz-box-shadow:4px 4px 4px  
4px rgb(219, 197, 207); -webkit-box-  
shadow:4px 4px 4px 4px rgb(219, 197, 207);  
box-shadow:4px 4px 4px 4px rgb(219, 197,  
207) }
```

Background

The CSS property to change the background color of an element to XYZ 60.4422, 59.4976, 67.3300 is called "background". The background property can be set on classes, ids or directly on the HTML element.

```
.background, #background, body{  
background: rgb(219, 197, 207) }
```

If only the background color should be changed can be used:

```
.background{ background-color: rgb(219,  
197, 207) }
```

This example shows the color as background, it is applied via the CSS property "background".

To optimize and compress your CSS code, you can use our [online CSS compressor and optimizer](#) based on csstidy. If you want to create a linear or radial gradient as background or border, check our [CSS Gradient Generator](#).

Hey! You found this booklet interesting? Support Converting Colors with the new Membership Option!

The pro membership hides all ads, plus gives you double the colors in the color bucket, and more awesome pro features!

[Learn more, Memberships starting at \\$2.50/m!](#)

**Follow me
on Twitter!**

@ConvertingColor