

Converting Colors

XYZ(60.6026, 58.5489, 65.5582)

Have a look what the booklet for
XYZ(60.6026, 58.5489, 65.5582)
contains.

XYZ(60.7427, 58.6793, 65.8824)	3
<i>Conversions</i>	4
<i>Details</i>	6
<i>Harmonies</i>	12
<i>Previews</i>	24
<i>Color Blindness Simulation</i>	28
<i>CSS Examples</i>	31

Color

**XYZ(60.7427, 58.6793,
65.8824)**

Conversions

Conversions Part 1

Format	Color
Hex	DFC2CD
RGB	223, 194, 205
RGB Percent	87%, 76%, 80%
CMY	0.1255, 0.2392, 0.1961
CMYK	0.00, 0.13, 0.08, 0.13
HSL	337°, 31%, 82%
HSV	337°, 13%, 87%
XYZ	60.7427, 58.6793, 65.8824
YIQ	203.9250, 13.7530, 9.5690

Conversions

Conversions Part 2

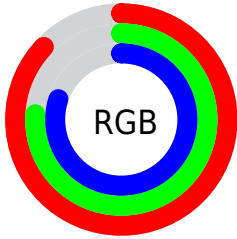
Format	Color
R _Y B	223, 194, 205
Decimal	14664397
CIE Lab	81.11, 12.08, -1.72
CIE LCh	81, 12.203, 351.892
Yxy	58.6793, 0.3278, 0.3167
Android (android.graphics.Color)	4292854477 (0xFFDFC2CD)
YUV	203.9250, 0.5300, 16.7288
Hunter-Lab	76.6024, 7.4892, 2.6289

Details

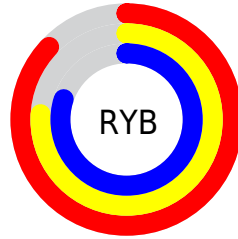
The XYZ color **60.7427, 58.6793, 65.8824** is a light color, and the websafe version is hex **FFCCCC**. A complement of this color would be **60.5218, 68.9998, 72.4191**, and the grayscale version is **57.3392, 60.3253, 65.6943**.

A 20% lighter version of the original color is **93.7872, 97.4744, 108.4791**, and **31.1124, 29.3154, 33.2968** is the 20% darker color. If you saturate the color by 10%, you get **54.5497, 48.8496, 55.9354**, and if you desaturate by 10%, it is **67.8317, 70.0628, 76.8590**.

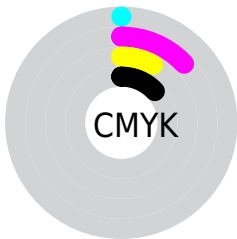
Distribution



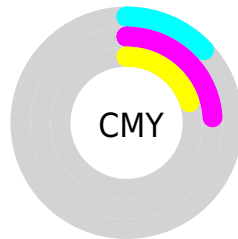
- Red (87%)
- Green (76%)
- Blue (80%)



- Red (87%)
- Yellow (76%)
- Blue (80%)



- Cyan (0%)
- Magenta (13%)
- Yellow (8%)
- Black (13%)



- Cyan (13%)
- Magenta (24%)
- Yellow (20%)

Brightness & Saturation Gradients

These gradients show how the XYZ color 60.7427, 58.6793, 65.8824 changes by changing the brightness by 10 percent. The first figure shows a shift by +10% for each color and the second figure -10%.

Similar to the brightness gradients but the following saturation gradients show a change of the XYZ color 60.7427, 58.6793, 65.8824 by changing the saturation by 10% instead.

60.7427, 58.6793,
65.8824

60.7427, 58.6793,
65.8824

417.1210,
419.7124, 464.3489

44.2693, 42.3550,
47.7211

105.0065,
102.9114, 114.9429

31.0811, 29.3794,
33.2476

133.5277,
131.5880, 146.6792

20.8127, 19.3680,
22.0435

166.7954,
165.1509, 183.7775

13.0989, 11.9365,
13.6903

205.1751,
203.9844, 226.6564

7.5741, 6.7004,
7.7693

249.0322,
248.4729, 275.7345

3.8732, 3.2755,
3.8620

298.7320,

1.6306, 1.2772,

299.0008, 331.4302

1.5500

354.6398,
355.9525, 394.1622

■ 0.4123, 0.1234,
0.2547

■ 0.0000, 0.0000,
0.0000

■ 60.7427, 58.6793,
65.8824

■ 60.7427, 58.6793,
65.8824

■ 54.5497, 48.8496,
55.9354

■ 67.8317, 70.0628,
76.8590

■ 49.2107, 40.4983,
46.9830

■ 75.8463, 83.0557,
88.8910

■ 44.6880, 33.5553,
38.9939

■ 82.9080, 93.8947,
101.3705

■ 40.9387, 27.9416,
31.9331

■ 84.2418, 94.4282,
108.3942

■ 37.9160, 23.5706,
25.7638

■ 35.5677, 20.3451,
20.4459

■ 33.8339, 18.1531,
15.9356

■ 32.6432, 16.8599,
12.1837

■ 32.0544, 16.3372,
9.9688

Harmonies

Analogous

The Analogous color harmony consists of three colors that are next to each other on the color wheel.



59.6997, 58.6793, 72.9068



60.7427, 58.6793, 65.8824



60.4225, 58.6793, 58.8233

Triad

The Triadic color harmony groups three colors that are evenly spaced from another and form a triangle on the color wheel.



60.7427, 58.6793, 65.8824



53.9739, 58.6793, 51.7863



52.8164, 58.6793, 75.5263

Complementary

The Complementary color scheme is a pair of colors which are on the opposite of each other on the color wheel.



60.7427, 58.6793, 65.8824



60.5218, 68.9998, 72.4191

Split Complementary

Split-complementary colors differ from the complementary color scheme. The scheme consists of three colors, the original color and two neighbors of the complement color.



51.3682, 58.6793, 69.2433



60.7427, 58.6793, 65.8824



52.0222, 58.6793, 55.6524

Square

The Square scheme is like the rectangle color scheme, but the four colors are evenly spaced on the color wheel.



60.7427, 58.6793, 65.8824



56.4637, 58.6793, 51.0356



51.0819, 58.6793, 61.9417



55.0878, 58.6793, 78.7438

Rectangle

The Rectangle color scheme consists of four colors that form a rectangle on the color wheel.



60.7427, 58.6793, 65.8824



59.4834, 58.6793, 55.0104



51.0819, 58.6793, 61.9417



52.2201, 58.6793, 73.6811

Sweetspot

The Sweet Spot groups the original color and five complimentary colors.



60.7444, 58.6819, 65.8837



90.8791, 93.2627, 102.5631



59.7309, 57.8938, 77.8394



19.2889, 19.6994, 21.7032



0.0000, 0.0000, 0.0000



20.3446, 21.4041, 23.3091

Same Dimension

The Same Dimension uses a secret algorithm to generate beautiful new colors.



60.7444, 58.6819, 65.8837



79.5742, 75.1492, 84.9333



60.2245, 59.6924, 59.3896



13.9212, 13.7861, 15.3553



18.8981, 9.6262, 6.1292



1.3525, 0.6843, 0.6492

Inverse Universe

The Inverse Universe completely reimagines the original color for something new.



60.7444, 58.6819, 65.8837



79.5742, 75.1492, 84.9333



61.0621, 67.7841, 79.6783



13.9212, 13.7861, 15.3553



18.8981, 9.6262, 6.1292



1.3525, 0.6843, 0.6492

Previews

White Background



This preview shows how the XYZ color 60.7427, 58.6793, 65.8824 looks on a white background.

Color Contrast Check

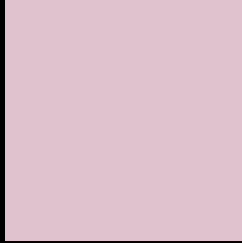
Large Text (above 18pt) WCAG AA × Fail

Any Text WCAG AA × Fail

Large Text (above 18pt) WCAG AAA × Fail

Any Text WCAG AAA × Fail

Black Background



This preview shows how the XYZ color 60.7427, 58.6793, 65.8824 looks on a black background.

Color Contrast Check

Large Text (above 18pt) WCAG AA ✓ Pass

Any Text WCAG AA ✓ Pass

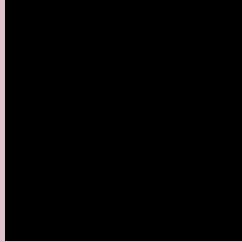
Large Text (above 18pt) WCAG AAA ✓ Pass

Any Text WCAG AAA ✓ Pass

If you want to check with other color combinations, try the [Color Contrast Checker](#).

XYZ 60.7427, 58.6793, 65.8824

Background



This preview shows how black text looks on a background with the XYZ color 60.7427, 58.6793, 65.8824.



This preview shows how white text looks on a background with the XYZ color 60.7427, 58.6793,

65.8824.

Color Blindness Simulation

Color vision deficiency is a very complex topic, and I could not describe the different causes any better than Wikipedia does, so if you want to learn more, you should check out their [article about color blindness](#).

Dichromacy



Original Color

60.7427, 58.6793, 65.8824

Protanopia

56.7915, 58.6085, 68.6409

Deuteranopia

60.0498, 58.6536, 65.9139



Tritanopia

61.0100, 58.4314, 68.3844

Trichromacy



Original Color

60.7427, 58.6793, 65.8824

Protanomaly

58.1576, 58.6439, 67.9287

Deuteranomaly

60.3533, 58.8101, 65.9281

Tritanomaly

60.8866, 58.3820, 67.7343

Monochromacy



Original Color

60.7427, 58.6793, 65.8824

Achromatopsia

57.3938, 60.3827, 65.7568

Achromatomaly

58.4173, 59.5171, 65.5358

CSS Examples

Text

The CSS property to change the color of the text to XYZ 60.7427, 58.6793, 65.8824 is called "color". The color property can be set on classes, ids or directly on the HTML element.

This example shows how text in the color `rgb(223, 194, 205)` looks like.

```
.text, #text, p{  
    color:rgb(223, 194, 205)  
}
```

If you want to add a text shadow in that color use the text-shadow property, you can generate a text shadow directly with our [CSS Text Shadow Generator](#).

Here you see how black text with a 4 pixel rgb(223, 194, 205) colored shadow looks like.

```
.shadow{ text-shadow: 4px 4px 2px rgb(223, 194, 205) }
```

Border

The CSS property to change the border of an element to XYZ 60.7427, 58.6793, 65.8824 is called "border". The border property can be set on classes, ids or directly on the HTML element.

This example shows the color as border, it can be applied via the CSS property "border" or "border-color".

```
.border, #border, table{ border:4px solid rgb(223, 194, 205) }
```


If only the border color should be changed use the property `border-color`.

```
.border{ border-color:rgb(223, 194, 205) }
```

If you want to add a box shadow in that color use:

Here you see how a box with a 4 pixel `rgb(223, 194, 205)` colored shadow looks like.

```
.boxshadow{ -moz-box-shadow:4px 4px 4px  
4px rgb(223, 194, 205); -webkit-box-  
shadow:4px 4px 4px 4px rgb(223, 194, 205);  
box-shadow:4px 4px 4px 4px rgb(223, 194,  
205) }
```

Background

The CSS property to change the background color of an element to XYZ 60.7427, 58.6793, 65.8824 is called "background". The background property can be set on classes, ids or directly on the HTML element.

```
.background, #background, body{  
background: rgb(223, 194, 205) }
```

If only the background color should be changed can be used:

```
.background{ background-color: rgb(223,  
194, 205) }
```

This example shows the color as background, it is applied via the CSS property "background".

To optimize and compress your CSS code, you can use our [online CSS compressor and optimizer](#) based on csstidy. If you want to create a linear or radial gradient as background or border, check our [CSS Gradient Generator](#).

Hey! You found this booklet interesting? Support Converting Colors with the new Membership Option!

The pro membership hides all ads, plus gives you double the colors in the color bucket, and more awesome pro features!

[Learn more, Memberships starting at \\$2.50/m!](#)

**Follow me
on Twitter!**

@ConvertingColor