

Converting Colors

XYZ(60.6675, 60.1918, 50.8038)

Have a look what the booklet for
XYZ(60.6675, 60.1918, 50.8038)
contains.

XYZ(60.9639, 60.4658, 51.1058)	3
<i>Conversions</i>	4
<i>Details</i>	6
<i>Harmonies</i>	12
<i>Previews</i>	24
<i>Color Blindness Simulation</i>	28
<i>CSS Examples</i>	31

Color

**XYZ(60.9639, 60.4658,
51.1058)**

Conversions

Conversions Part 1

Format	Color
Hex	E6C6B3
RGB	230, 198, 179
RGB Percent	90%, 78%, 70%
CMY	0.0980, 0.2235, 0.2980
CMYK	0.00, 0.14, 0.22, 0.10
HSL	22°, 50%, 80%
HSV	22°, 22%, 90%
XYZ	60.9639, 60.4658, 51.1058
YIQ	205.4020, 25.1710, 0.8750

Conversions

Conversions Part 2

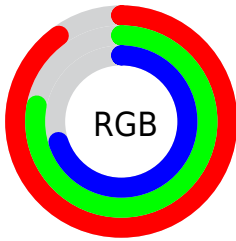
Format	Color
R_{YB}	230, 209, 179
Decimal	15124147
CIE _{Lab}	82.09, 8.40, 13.69
CIE _{LCh}	82, 16.063, 58.478
Yxy	60.4658, 0.3533, 0.3505
Android (android.graphics.Color)	4293314227 (0xFFE6C6B3)
YUV	205.4020, -13.0162, 21.5724
Hunter-Lab	77.7598, 3.8650, 15.4649

Details

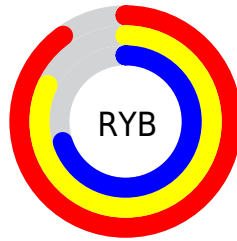
The XYZ color **60.9639, 60.4658, 51.1058** is a light color, and the websafe version is hex **FFCCCC**. A complement of this color would be **56.1672, 61.8840, 83.8478**, and the grayscale version is **58.3547, 61.3937, 66.8578**.

A 20% lighter version of the original color is **91.9954, 98.7782, 92.8147**, and **31.1947, 30.4515, 23.9723** is the 20% darker color. If you saturate the color by 10%, you get **55.6868, 53.3286, 38.8116**, and if you desaturate by 10%, it is **66.9466, 68.3922, 65.5507**.

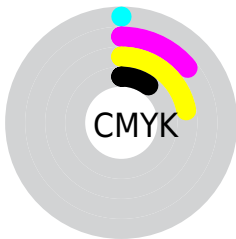
Distribution



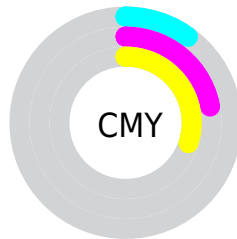
- Red (90%)
- Green (78%)
- Blue (70%)



- Red (90%)
- Yellow (82%)
- Blue (70%)



- Cyan (0%)
- Magenta (14%)
- Yellow (22%)
- Black (10%)





- Cyan (10%)
- Magenta (22%)
- Yellow (30%)

Brightness & Saturation Gradients


These gradients show how the XYZ color 60.9639, 60.4658, 51.1058 changes by changing the brightness by 10 percent. The first figure shows a shift by +10% for each color and the second figure -10%.


Similar to the brightness gradients but the following saturation gradients show a change of the XYZ color 60.9639, 60.4658, 51.1058 by changing the saturation by 10% instead.


 60.9639, 60.4658,
51.1058

 60.9639, 60.4658,
51.1058


417.9197,
426.3126, 407.8330

 44.4485, 43.7942,
35.9155


 105.3251,
105.5051, 93.2242

 31.2226, 30.5087,
24.0798


133.9015,
134.6415, 120.9895

 20.9211, 20.2251,
15.1801

167.2290,
168.7017, 153.7834

 13.1785, 12.5587,
8.7978

205.6729,
208.0700, 192.0247

 7.6294, 7.1254,
4.5145

249.5986,
253.1309, 236.1317

 3.9085, 3.5407,
1.9117

299.3713,

 1.6505, 1.4201,

304.2687, 286.5230

0.5001

355.3566,
361.8678, 343.6173

0.4250, 0.2315,
0.0000

0.0000, 0.0000,
0.0000

60.9639, 60.4658,
51.1058

60.9639, 60.4658,
51.1058

55.6868, 53.3286,
38.8116

66.9466, 68.3922,
65.5507

51.0823, 46.9471,
28.5602

73.6562, 77.1235,
82.2396

47.1222, 41.2976,
20.2399

81.1192, 86.6853,
101.2649

43.7739, 36.3516,
13.7266

86.4433, 95.5631,
108.4972

■ 41.0015, 32.0788,
8.8815

■ 38.7649, 28.4459,
5.5454

■ 37.0171, 25.4160,
3.5271

■ 35.9377, 23.4318,
2.6287

Harmonies

Analogous

The Analogous color harmony consists of three colors that are next to each other on the color wheel.



63.4228, 60.4658, 57.2912



60.9639, 60.4658, 51.1058



57.6450, 60.4658, 48.8087

Triad

The Triadic color harmony groups three colors that are evenly spaced from another and form a triangle on the color wheel.



60.9639, 60.4658, 51.1058



51.1687, 60.4658, 65.3401



60.6511, 60.4658, 83.7409

Complementary

The Complementary color scheme is a pair of colors which are on the opposite of each other on the color wheel.



60.9639, 60.4658, 51.1058



56.1672, 61.8840, 83.8478

Split Complementary

Split-complementary colors differ from the complementary color scheme. The scheme consists of three colors, the original color and two neighbors of the complement color.



57.2972, 60.4658, 86.4260



60.9639, 60.4658, 51.1058



51.9036, 60.4658, 75.1929

Square

The Square scheme is like the rectangle color scheme, but the four colors are evenly spaced on the color wheel.



60.9639, 60.4658, 51.1058



52.0662, 60.4658, 56.5084



54.1140, 60.4658, 83.1575



63.2373, 60.4658, 76.1396

Rectangle

The Rectangle color scheme consists of four colors that form a rectangle on the color wheel.



60.9639, 60.4658, 51.1058



55.4198, 60.4658, 49.5998



54.1140, 60.4658, 83.1575



59.5721, 60.4658, 85.2795

Sweetspot

The Sweet Spot groups the original color and five complimentary colors.



60.9655, 60.4685, 51.1071



88.8390, 91.9652, 93.3045



60.5494, 53.7822, 69.0157



18.9053, 19.5412, 19.6977



0.0000, 0.0000, 0.0000



20.3446, 21.4041, 23.3091

Same Dimension

The Same Dimension uses a secret algorithm to generate beautiful new colors.



60.9655, 60.4685, 51.1071



73.6139, 71.8015, 56.5172



67.2115, 72.9605, 53.1891



14.8147, 15.2434, 15.0659



20.4535, 13.4811, 1.5241



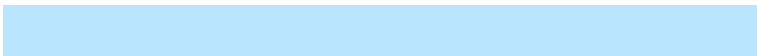
1.5982, 1.1697, 0.1415

Inverse Universe

The Inverse Universe completely reimagines the original color for something new.



56.1672, 61.8840, 83.8478



66.4508, 73.9072, 105.3709



50.3909, 50.3313, 81.9224



14.3325, 15.3863, 18.3588



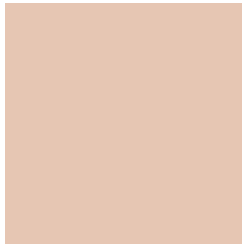
13.8787, 14.8195, 44.5121



1.1139, 1.2718, 3.3187

Previews

White Background



This preview shows how the XYZ color 60.9639, 60.4658, 51.1058 looks on a white background.

Color Contrast Check

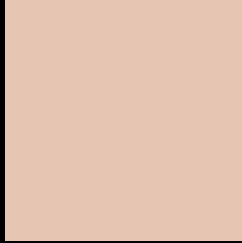
Large Text (above 18pt) WCAG AA × Fail

Any Text WCAG AA × Fail

Large Text (above 18pt) WCAG AAA × Fail

Any Text WCAG AAA × Fail

Black Background



This preview shows how the XYZ color 60.9639, 60.4658, 51.1058 looks on a black background.

Color Contrast Check

Large Text (above 18pt) WCAG AA ✓ Pass

Any Text WCAG AA ✓ Pass

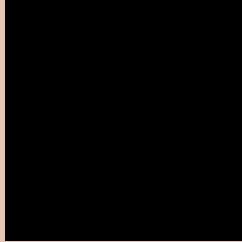
Large Text (above 18pt) WCAG AAA ✓ Pass

Any Text WCAG AAA ✓ Pass

If you want to check with other color combinations, try the [Color Contrast Checker](#).

XYZ 60.9639, 60.4658, 51.1058

Background



This preview shows how black text looks on a background with the XYZ color 60.9639, 60.4658, 51.1058.



This preview shows how white text looks on a background with the XYZ color 60.9639, 60.4658,

Color Blindness Simulation

Color vision deficiency is a very complex topic, and I could not describe the different causes any better than Wikipedia does, so if you want to learn more, you should check out their [article about color blindness](#).

Dichromacy



Original Color

60.9639, 60.4658, 51.1058

Protanopia

57.4769, 60.7093, 52.9447

Deuteranopia

61.7072, 60.5108, 51.0753



Tritanopia

64.7321, 60.6794, 68.6222

Trichromacy



Original Color

60.9639, 60.4658, 51.1058

Protanomaly

58.6744, 60.6373, 52.3278

Deuteranomaly

61.3816, 60.3430, 51.0600

Tritanomaly

63.3124, 60.4311, 61.7535

Monochromacy



Original Color

60.9639, 60.4658, 51.1058

Achromatopsia

58.0276, 61.0496, 66.4830

Achromatomaly

58.8159, 60.5227, 60.8067

CSS Examples

Text

The CSS property to change the color of the text to XYZ 60.9639, 60.4658, 51.1058 is called "color". The color property can be set on classes, ids or directly on the HTML element.

This example shows how text in the color `rgb(230, 198, 179)` looks like.

```
.text, #text, p{  
    color:rgb(230, 198, 179)  
}
```

If you want to add a text shadow in that color use the text-shadow property, you can generate a text shadow directly with our [CSS Text Shadow Generator](#).

Here you see how black text with a 4 pixel rgb(230, 198, 179) colored shadow looks like.

```
.shadow{ text-shadow: 4px 4px 2px rgb(230, 198, 179) }
```

Border

The CSS property to change the border of an element to XYZ 60.9639, 60.4658, 51.1058 is called "border". The border property can be set on classes, ids or directly on the HTML element.

This example shows the color as border, it can be applied via the CSS property "border" or "border-color".

```
.border, #border, table{ border:4px solid rgb(230, 198, 179) }
```


If only the border color should be changed use the property `border-color`.

```
.border{ border-color:rgb(230, 198, 179) }
```

If you want to add a box shadow in that color use:

Here you see how a box with a 4 pixel `rgb(230, 198, 179)` colored shadow looks like.

```
.boxshadow{ -moz-box-shadow:4px 4px 4px  
4px rgb(230, 198, 179); -webkit-box-  
shadow:4px 4px 4px 4px rgb(230, 198, 179);  
box-shadow:4px 4px 4px 4px rgb(230, 198,  
179) }
```

Background

The CSS property to change the background color of an element to XYZ 60.9639, 60.4658, 51.1058 is called "background". The background property can be set on classes, ids or directly on the HTML element.

```
.background, #background, body{  
background: rgb(230, 198, 179) }
```

If only the background color should be changed can be used:

```
.background{ background-color: rgb(230,  
198, 179) }
```

This example shows the color as background, it is applied via the CSS property "background".

To optimize and compress your CSS code, you can use our [online CSS compressor and optimizer](#) based on csstidy. If you want to create a linear or radial gradient as background or border, check our [CSS Gradient Generator](#).

Hey! You found this booklet interesting? Support Converting Colors with the new Membership Option!

The pro membership hides all ads, plus gives you double the colors in the color bucket, and more awesome pro features!

[Learn more, Memberships starting at \\$2.50/m!](#)

**Follow me
on Twitter!**

@ConvertingColor