

# Converting Colors

XYZ(60.8693, 59.5186, 61.1034)

Have a look what the booklet for  
XYZ(60.8693, 59.5186, 61.1034)  
contains.

<b>XYZ(60.8693, 59.5186, 61.1034)</b> .....	3
<i><b>Conversions</b></i> .....	4
<i><b>Details</b></i> .....	6
<i><b>Harmonies</b></i> .....	12
<i><b>Previews</b></i> .....	24
<i><b>Color Blindness Simulation</b></i> .....	28
<i><b>CSS Examples</b></i> .....	31

# Color

**XYZ(60.8693, 59.5186,  
61.1034)**

# Conversions

## Conversions Part 1

Format	Color
Hex	E1C4C5
RGB	225, 196, 197
RGB Percent	88%, 77%, 77%
CMY	0.1176, 0.2314, 0.2274
CMYK	0.00, 0.13, 0.12, 0.12
HSL	358°, 33%, 83%
HSV	358°, 13%, 88%
XYZ	60.8693, 59.5186, 61.1034
YIQ	204.7850, 16.9630, 6.4590

# Conversions

## Conversions Part 2

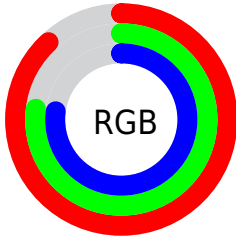
<b>Format</b>	<b>Color</b>
R <sub>Y</sub> B	225, 196, 197
Decimal	14795973
CIE Lab	81.58, 10.39, 3.27
CIE LCh	82, 10.895, 17.447
Yxy	59.5186, 0.3354, 0.3279
Android (android.graphics.Color)	4292986053 (0xFFE1C4C5)
YUV	204.7850, -3.8380, 17.7286
Hunter-Lab	77.1483, 5.8253, 7.0446

# Details

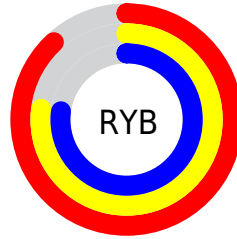
The XYZ color **60.8693, 59.5186, 61.1034** is a light color, and the websafe version is hex **FFCCCC**. A complement of this color would be **63.1470, 70.9695, 80.8948**, and the grayscale version is **57.9091, 60.9249, 66.3472**.

A 20% lighter version of the original color is **94.2547, 98.6663, 107.8427**, and **30.9931, 29.7642, 30.0981** is the 20% darker color. If you saturate the color by 10%, you get **53.8571, 49.1949, 47.3558**, and if you desaturate by 10%, it is **69.0048, 71.5132, 76.9971**.

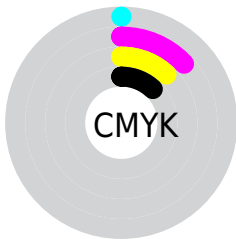
# Distribution



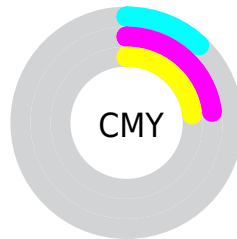
- Red (88%)
- Green (77%)
- Blue (77%)



- Red (88%)
- Yellow (77%)
- Blue (77%)



- Cyan (0%)
- Magenta (13%)
- Yellow (12%)
- Black (12%)



- Cyan (12%)
- Magenta (23%)
- Yellow (23%)

# Brightness & Saturation Gradients

These gradients show how the XYZ color 60.8693, 59.5186, 61.1034 changes by changing the brightness by 10 percent. The first figure shows a shift by +10% for each color and the second figure -10%.

Similar to the brightness gradients but the following saturation gradients show a change of the XYZ color 60.8693, 59.5186, 61.1034 by changing the saturation by 10% instead.



60.8693, 59.5186,  
61.1034

60.8693, 59.5186,  
61.1034

417.5782,  
422.8211, 446.5701

44.3718, 43.0307,  
43.8775

105.1889,  
104.1310, 107.9876

31.1621, 29.9092,  
30.2377

133.7417,  
133.0244, 138.4831

20.8747, 19.7697,  
19.7655

167.0436,  
166.8216, 174.2387

13.1444, 12.2277,  
12.0423

205.4601,  
205.9073, 215.6732

7.6058, 6.8990,  
6.6496

249.3564,  
250.6656, 263.2051

3.8934, 3.3990,  
3.1689

299.0980,

1.6420, 1.3434,

301.4811, 317.2528

1.1815

355.0501,  
358.7381, 378.2350

■ 0.4195, 0.1745,  
0.0000

■ 0.0000, 0.0000,  
0.0000

■ 60.8693, 59.5186,  
61.1034

■ 60.8693, 59.5186,  
61.1034

■ 53.8571, 49.1949,  
47.3558

■ 69.0048, 71.5132,  
76.9971

■ 47.9141, 40.4606,  
35.6587

■ 78.3045, 85.2400,  
95.1194

■ 42.9894, 33.2391,  
25.9152

■ 84.8616, 94.7477,  
108.4232

■ 39.0257, 27.4446,  
18.0188

■ 35.9603, 22.9824,  
11.8528

■ 33.7229, 19.7466,  
7.2876

■ 32.2329, 17.6152,  
4.1749

■ 31.3935, 16.4410,  
2.3391

■ 31.0940, 16.0246,  
1.6762

# Harmonies

## Analogous

The Analogous color harmony consists of three colors that are next to each other on the color wheel.



60.9714, 59.5186, 67.5809



60.8693, 59.5186, 61.1034



59.5962, 59.5186, 55.9659

# Triad

The Triadic color harmony groups three colors that are evenly spaced from another and form a triangle on the color wheel.



60.8693, 59.5186, 61.1034



53.3934, 59.5186, 56.6582



55.6205, 59.5186, 77.8889

# Complementary

The Complementary color scheme is a pair of colors which are on the opposite of each other on the color wheel.



60.8693, 59.5186, 61.1034



63.1470, 70.9695, 80.8948

# Split Complementary

Split-complementary colors differ from the complementary color scheme. The scheme consists of three colors, the original color and two neighbors of the complement color.



53.6493, 59.5186, 74.5303



60.8693, 59.5186, 61.1034



52.3869, 59.5186, 62.1074

# Square

The Square scheme is like the rectangle color scheme, but the four colors are evenly spaced on the color wheel.



60.8693, 59.5186, 61.1034



55.2627, 59.5186, 53.5207



52.4793, 59.5186, 68.6545



57.8991, 59.5186, 77.5748



# Rectangle

The Rectangle color scheme consists of four colors that form a rectangle on the color wheel.



60.8693, 59.5186, 61.1034



58.2736, 59.5186, 53.8592



52.4793, 59.5186, 68.6545



54.9011, 59.5186, 77.1431

# Sweetspot

The Sweet Spot groups the original color and five complimentary colors.



60.8710, 59.5212, 61.1047



90.3363, 93.0456, 99.7050



63.9334, 60.6942, 79.5803



19.1520, 19.6446, 20.9823



0.0000, 0.0000, 0.0000



20.3446, 21.4041, 23.3091



# Same Dimension

The Same Dimension uses a secret algorithm to generate beautiful new colors.



60.8710, 59.5212, 61.1047



78.6517, 75.8222, 76.8633



63.8296, 65.6206, 61.5296



13.7262, 13.7081, 14.3285



17.9263, 9.2375, 1.0118



1.2494, 0.6430, 0.1061



# Inverse Universe

The Inverse Universe completely reimagines the original color for something new.



60.8710, 59.5212, 61.1047



78.6517, 75.8222, 76.8633



59.8888, 64.2362, 80.4772



13.7262, 13.7081, 14.3285



17.9263, 9.2375, 1.0118

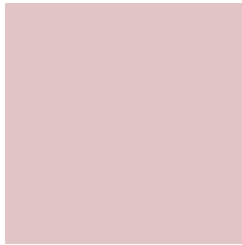


1.2494, 0.6430, 0.1061



# Previews

## White Background



This preview shows how the XYZ color 60.8693, 59.5186, 61.1034 looks on a white background.

## Color Contrast Check

Large Text (above 18pt) WCAG AA × Fail

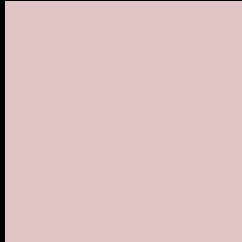
Any Text WCAG AA × Fail

Large Text (above 18pt) WCAG AAA × Fail

Any Text WCAG AAA × Fail



# Black Background



This preview shows how the XYZ color 60.8693, 59.5186, 61.1034 looks on a black background.

## Color Contrast Check

Large Text (above 18pt) WCAG AA ✓ Pass

Any Text WCAG AA ✓ Pass

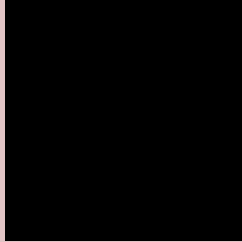
Large Text (above 18pt) WCAG AAA ✓ Pass

Any Text WCAG AAA ✓ Pass

If you want to check with other color combinations, try the [Color Contrast Checker](#).

# XYZ 60.8693, 59.5186, 61.1034

## Background



This preview shows how black text looks on a background with the XYZ color 60.8693, 59.5186, 61.1034.



This preview shows how white text looks on a background with the XYZ color 60.8693, 59.5186,



# Color Blindness Simulation

Color vision deficiency is a very complex topic, and I could not describe the different causes any better than Wikipedia does, so if you want to learn more, you should check out their [article about color blindness](#).

## Dichromacy



### Original Color

60.8693, 59.5186, 61.1034

### Protanopia

57.2780, 59.6766, 63.1434

### Deuteranopia

60.8693, 59.5186, 61.1034



## Tritanopia

62.4790, 59.5179, 68.5167

# Trichromacy



## Original Color

60.8693, 59.5186, 61.1034

## Protanomaly

58.6946, 59.7282, 62.4680

## Deuteranomaly

60.8693, 59.5186, 61.1034

## Tritanomaly

61.8986, 59.6067, 66.0005

# Monochromacy



## Original Color

60.8693, 59.5186, 61.1034

## Achromatopsia

58.0276, 61.0496, 66.4830

## Achromatomaly

58.9326, 60.5024, 64.4492

# CSS Examples

## Text

The CSS property to change the color of the text to XYZ 60.8693, 59.5186, 61.1034 is called "color". The color property can be set on classes, ids or directly on the HTML element.

This example shows how text in the color `rgb(225, 196, 197)` looks like.

```
.text, #text, p{  
    color:rgb(225, 196, 197)  
}
```

If you want to add a text shadow in that color use the text-shadow property, you can generate a text shadow directly with our [CSS Text Shadow Generator](#).

Here you see how black text with a 4 pixel rgb(225, 196, 197) colored shadow looks like.

```
.shadow{ text-shadow: 4px 4px 2px rgb(225, 196, 197) }
```

## Border

The CSS property to change the border of an element to XYZ 60.8693, 59.5186, 61.1034 is called "border". The border property can be set on classes, ids or directly on the HTML element.

This example shows the color as border, it can be applied via the CSS property "border" or "border-color".

```
.border, #border, table{ border:4px solid rgb(225, 196, 197) }
```



If only the border color should be changed use the property `border-color`.

```
.border{ border-color:rgb(225, 196, 197) }
```

If you want to add a box shadow in that color use:

Here you see how a box with a 4 pixel `rgb(225, 196, 197)` colored shadow looks like.

```
.boxshadow{ -moz-box-shadow:4px 4px 4px  
4px rgb(225, 196, 197); -webkit-box-  
shadow:4px 4px 4px 4px rgb(225, 196, 197);  
box-shadow:4px 4px 4px 4px rgb(225, 196,  
197) }
```

# Background

The CSS property to change the background color of an element to XYZ 60.8693, 59.5186, 61.1034 is called "background". The background property can be set on classes, ids or directly on the HTML element.

```
.background, #background, body{  
background: rgb(225, 196, 197) }
```

If only the background color should be changed can be used:

```
.background{ background-color: rgb(225,  
196, 197) }
```

This example shows the color as background, it is applied via the CSS property "background".

To optimize and compress your CSS code, you can use our [online CSS compressor and optimizer](#) based on csstidy. If you want to create a linear or radial gradient as background or border, check our [CSS Gradient Generator](#).

Hey! You found this booklet interesting? Support Converting Colors with the new Membership Option!

The pro membership hides all ads, plus gives you double the colors in the color bucket, and more awesome pro features!

**[Learn more, Memberships starting at \\$2.50/m!](#)**

**Follow me  
on Twitter!**

@ConvertingColor