

# Converting Colors

XYZ(60.8695, 60.4738, 62.3780)

Have a look what the booklet for  
XYZ(60.8695, 60.4738, 62.3780)  
contains.

<b>XYZ(60.8564, 60.5000, 62.5030)</b> .....	3
<b><i>Conversions</i></b> .....	4
<b><i>Details</i></b> .....	6
<b><i>Harmonies</i></b> .....	12
<b><i>Previews</i></b> .....	24
<b><i>Color Blindness Simulation</i></b> .....	28
<b><i>CSS Examples</i></b> .....	31

# Color

**XYZ(60.8564, 60.5000,  
62.5030)**

# Conversions

## Conversions Part 1

<b>Format</b>	<b>Color</b>
Hex	DEC7C7
RGB	222, 199, 199
RGB Percent	87%, 78%, 78%
CMY	0.1294, 0.2196, 0.2196
CMYK	0.00, 0.10, 0.10, 0.13
HSL	0°, 26%, 83%
HSV	0°, 10%, 87%
XYZ	60.8564, 60.5000, 62.5030
YIQ	205.8770, 13.7080, 4.8760

# Conversions

## Conversions Part 2

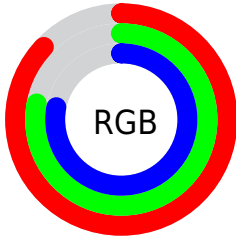
Format	Color
R <sub>Y</sub> B	222, 199, 199
Decimal	14600135
CIE Lab	82.11, 8.06, 2.94
CIE LCh	82, 8.582, 20.006
Yxy	60.5000, 0.3310, 0.3291
Android (android.graphics.Color)	4292790215 (0xFFDEC7C7)
YUV	205.8770, -3.3904, 14.1399
Hunter-Lab	77.7817, 3.5403, 6.8036

# Details

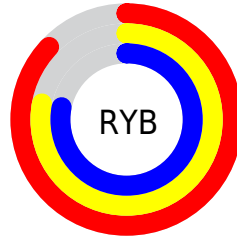
The XYZ color **60.8564, 60.5000, 62.5030** is a light color, and the websafe version is hex **CCCCCC**. A complement of this color would be **62.8589, 69.6571, 79.2399**, and the grayscale version is **58.6038, 61.6558, 67.1432**.

A 20% lighter version of the original color is **95.0500, 100.0000, 108.9000**, and **31.1726, 30.5106, 31.0342** is the 20% darker color. If you saturate the color by 10%, you get **53.7250, 50.0651, 48.3231**, and if you desaturate by 10%, it is **69.1122, 72.5804, 78.9142**.

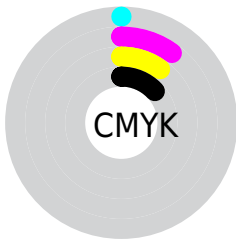
# Distribution



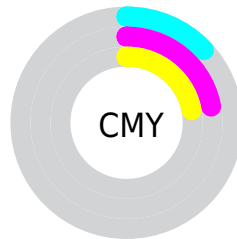
- Red (87%)
- Green (78%)
- Blue (78%)



- Red (87%)
- Yellow (78%)
- Blue (78%)



- Cyan (0%)
- Magenta (10%)
- Yellow (10%)
- Black (13%)



- Cyan (13%)
- Magenta (22%)
- Yellow (22%)

# Brightness & Saturation Gradients

These gradients show how the XYZ color 60.8564, 60.5000, 62.5030 changes by changing the brightness by 10 percent. The first figure shows a shift by +10% for each color and the second figure -10%.

Similar to the brightness gradients but the following saturation gradients show a change of the XYZ color 60.8564, 60.5000, 62.5030 by changing the saturation by 10% instead.



60.8564, 60.5000,  
62.5030

60.8564, 60.5000,  
62.5030

417.5316,  
426.4383, 451.8217

44.3614, 43.8218,  
45.0008

105.1703,  
105.5546, 110.0308

31.1538, 30.5304,  
31.1151

133.7199,  
134.6998, 140.8936

20.8684, 20.2415,  
20.4273

167.0183,  
168.7695, 177.0469

13.1398, 12.5707,  
12.5189

205.4311,  
208.1480, 218.9094

7.6025, 7.1336,  
6.9713

249.3234,  
253.2197, 266.8996

3.8913, 3.5458,  
3.3660

299.0607,

1.6408, 1.4229,

304.3691, 321.4360

1.2844

355.0083,  
361.9805, 382.9372

■ 0.4188, 0.2335,  
0.0490

■ 0.0000, 0.0000,  
0.0000

■ 60.8564, 60.5000,  
62.5030

■ 60.8564, 60.5000,  
62.5030

■ 53.7250, 50.0651,  
48.3231

■ 69.1122, 72.5804,  
78.9142

■ 47.6645, 41.1971,  
36.2747

■ 78.5326, 86.3646,  
97.6432

■ 42.6248, 33.8226,  
26.2558

■ 83.9344, 94.2697,  
108.3798

■ 38.5497, 27.8595,  
18.1549

■ 35.3777, 23.2178,  
11.8496

■ 33.0402, 19.7972,  
7.2034

■ 31.4586, 17.4827,  
4.0602

■ 30.5398, 16.1379,  
2.2344

■ 30.1249, 15.5306,  
1.4099

# Harmonies

## Analogous

The Analogous color harmony consists of three colors that are next to each other on the color wheel.



61.0208, 60.5000, 67.6297



60.8564, 60.5000, 62.5030



59.7831, 60.5000, 58.4872

# Triad

The Triadic color harmony groups three colors that are evenly spaced from another and form a triangle on the color wheel.



60.8564, 60.5000, 62.5030



54.8627, 60.5000, 59.6377



56.8980, 60.5000, 76.2506

# Complementary

The Complementary color scheme is a pair of colors which are on the opposite of each other on the color wheel.



60.8564, 60.5000, 62.5030



62.8589, 69.6571, 79.2399

# Split Complementary

Split-complementary colors differ from the complementary color scheme. The scheme consists of three colors, the original color and two neighbors of the complement color.



55.2825, 60.5000, 73.8584



60.8564, 60.5000, 62.5030



54.1239, 60.5000, 64.1494

# Square

The Square scheme is like the rectangle color scheme, but the four colors are evenly spaced on the color wheel.



60.8564, 60.5000, 62.5030



56.3139, 60.5000, 56.8944



54.2759, 60.5000, 69.3645



58.7096, 60.5000, 75.7524



# Rectangle

The Rectangle color scheme consists of four colors that form a rectangle on the color wheel.



60.8564, 60.5000, 62.5030



58.7089, 60.5000, 56.8938



54.2759, 60.5000, 69.3645



56.3146, 60.5000, 75.7532

# Sweetspot

The Sweet Spot groups the original color and five complimentary colors.



60.8581, 60.5027, 62.5043



91.4509, 94.7337, 101.7446



63.7331, 61.6512, 77.6486



19.3736, 19.9833, 21.3786



0.0000, 0.0000, 0.0000



20.3446, 21.4041, 23.3091



# Same Dimension

The Same Dimension uses a secret algorithm to generate beautiful new colors.



60.8581, 60.5027, 62.5043



81.5136, 80.1931, 81.9883



63.6039, 65.9943, 63.4196



13.7075, 13.7009, 14.2289



17.8935, 9.2250, 0.8375



1.2403, 0.6396, 0.0581



# Inverse Universe

The Inverse Universe completely reimagines the original color for something new.



62.8589, 69.6571, 79.2399



84.6729, 94.6478, 108.4139



59.9090, 63.7573, 78.2566



14.1164, 15.5719, 17.6494



23.3409, 34.1514, 46.4100

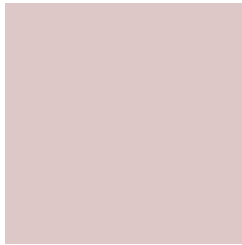


1.6179, 2.3673, 3.2169



# Previews

## White Background



This preview shows how the XYZ color 60.8564, 60.5000, 62.5030 looks on a white background.

## Color Contrast Check

Large Text (above 18pt) WCAG AA × Fail

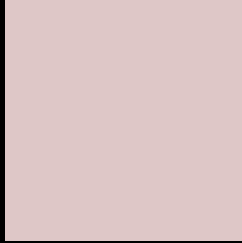
Any Text WCAG AA × Fail

Large Text (above 18pt) WCAG AAA × Fail

Any Text WCAG AAA × Fail



# Black Background



This preview shows how the XYZ color 60.8564, 60.5000, 62.5030 looks on a black background.

## Color Contrast Check

Large Text (above 18pt) WCAG AA ✓ Pass

Any Text WCAG AA ✓ Pass

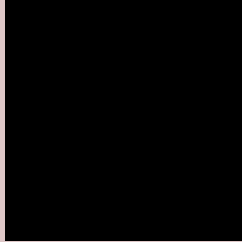
Large Text (above 18pt) WCAG AAA ✓ Pass

Any Text WCAG AAA ✓ Pass

If you want to check with other color combinations, try the [Color Contrast Checker](#).

# XYZ 60.8564, 60.5000, 62.5030

## Background



This preview shows how black text looks on a background with the XYZ color 60.8564, 60.5000, 62.5030.



This preview shows how white text looks on a background with the XYZ color 60.8564, 60.5000,



# Color Blindness Simulation

Color vision deficiency is a very complex topic, and I could not describe the different causes any better than Wikipedia does, so if you want to learn more, you should check out their [article about color blindness](#).

## Dichromacy



### Original Color

60.8564, 60.5000, 62.5030

### Protanopia

58.1930, 60.4842, 63.8659

### Deuteranopia

61.8669, 60.6804, 62.4846



## Tritanopia

62.5904, 60.5333, 70.6726

# Trichromacy



## Original Color

60.8564, 60.5000, 62.5030

## Protanomaly

59.2774, 60.7073, 63.2370

## Deuteranomaly

61.5542, 60.5192, 62.4700

## Tritanomaly

61.8880, 60.5811, 67.4630

# Monochromacy



## Original Color

60.8564, 60.5000, 62.5030

## Achromatopsia

58.6655, 61.7207, 67.2138

## Achromatomaly

59.2868, 61.0207, 65.1533

# CSS Examples

## Text

The CSS property to change the color of the text to XYZ 60.8564, 60.5000, 62.5030 is called "color". The color property can be set on classes, ids or directly on the HTML element.

This example shows how text in the color `rgb(222, 199, 199)` looks like.

```
.text, #text, p{  
    color:rgb(222, 199, 199)  
}
```

If you want to add a text shadow in that color use the text-shadow property, you can generate a text shadow directly with our [CSS Text Shadow Generator](#).

Here you see how black text with a 4 pixel rgb(222, 199, 199) colored shadow looks like.

```
.shadow{ text-shadow: 4px 4px 2px rgb(222, 199, 199) }
```

## Border

The CSS property to change the border of an element to XYZ 60.8564, 60.5000, 62.5030 is called "border". The border property can be set on classes, ids or directly on the HTML element.

This example shows the color as border, it can be applied via the CSS property "border" or "border-color".

```
.border, #border, table{ border:4px solid rgb(222, 199, 199) }
```



If only the border color should be changed use the property `border-color`.

```
.border{ border-color:rgb(222, 199, 199) }
```

If you want to add a box shadow in that color use:

Here you see how a box with a 4 pixel `rgb(222, 199, 199)` colored shadow looks like.

```
.boxshadow{ -moz-box-shadow:4px 4px 4px 4px rgb(222, 199, 199); -webkit-box-shadow:4px 4px 4px 4px rgb(222, 199, 199); box-shadow:4px 4px 4px 4px rgb(222, 199, 199) }
```

# Background

The CSS property to change the background color of an element to XYZ 60.8564, 60.5000, 62.5030 is called "background". The background property can be set on classes, ids or directly on the HTML element.

```
.background, #background, body{  
background: rgb(222, 199, 199) }
```

If only the background color should be changed can be used:

```
.background{ background-color: rgb(222,  
199, 199) }
```

This example shows the color as background, it is applied via the CSS property "background".

To optimize and compress your CSS code, you can use our [online CSS compressor and optimizer](#) based on csstidy. If you want to create a linear or radial gradient as background or border, check our [CSS Gradient Generator](#).

Hey! You found this booklet interesting? Support Converting Colors with the new Membership Option!

The pro membership hides all ads, plus gives you double the colors in the color bucket, and more awesome pro features!

**[Learn more, Memberships starting at \\$2.50/m!](#)**

**Follow me  
on Twitter!**

@ConvertingColor