

Converting Colors

XYZ(60.9535, 60.6974, 66.3626)

Have a look what the booklet for
XYZ(60.9535, 60.6974, 66.3626)
contains.

XYZ(60.8871, 60.7764, 66.2795)	3
<i>Conversions</i>	4
<i>Details</i>	6
<i>Harmonies</i>	12
<i>Previews</i>	24
<i>Color Blindness Simulation</i>	28
<i>CSS Examples</i>	31

Color

**XYZ(60.8871, 60.7764,
66.2795)**

Conversions

Conversions Part 1

Format	Color
Hex	DBC8CD
RGB	219, 200, 205
RGB Percent	86%, 78%, 80%
CMY	0.1412, 0.2157, 0.1961
CMYK	0.00, 0.09, 0.06, 0.14
HSL	344°, 21%, 82%
HSV	344°, 9%, 86%
XYZ	60.8871, 60.7764, 66.2795
YIQ	206.2510, 9.7190, 5.5830

Conversions

Conversions Part 2

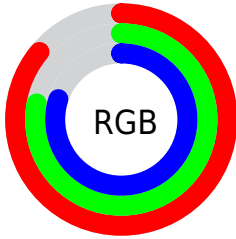
Format	Color
R _Y B	219, 200, 205
Decimal	14403789
CIE Lab	82.26, 7.49, -0.09
CIE LCh	82, 7.495, 359.320
Yxy	60.7764, 0.3240, 0.3234
Android (android.graphics.Color)	4292593869 (0xFFDBC8CD)
YUV	206.2510, -0.6167, 11.1809
Hunter-Lab	77.9592, 2.9820, 4.1642

Details

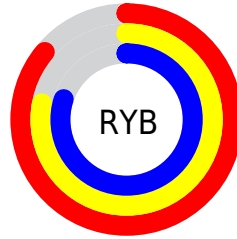
The XYZ color **60.8871, 60.7764, 66.2795** is a light color, and the websafe version is hex **CCCCCC**. A complement of this color would be **61.2908, 67.7989, 73.4777**, and the grayscale version is **58.8279, 61.8915, 67.3998**.

A 20% lighter version of the original color is **95.0500, 100.0000, 108.9000**, and **31.1746, 30.6846, 33.5578** is the 20% darker color. If you saturate the color by 10%, you get **54.3253, 50.6110, 54.9708**, and if you desaturate by 10%, it is **68.3799, 72.4805, 78.8916**.

Distribution



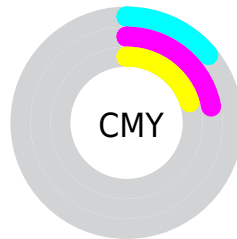
- Red (86%)
- Green (78%)
- Blue (80%)



- Red (86%)
- Yellow (78%)
- Blue (80%)



- Cyan (0%)
- Magenta (9%)
- Yellow (6%)
- Black (14%)



- Cyan (14%)
- Magenta (22%)
- Yellow (20%)

Brightness & Saturation Gradients

These gradients show how the XYZ color 60.8871, 60.7764, 66.2795 changes by changing the brightness by 10 percent. The first figure shows a shift by +10% for each color and the second figure -10%.

Similar to the brightness gradients but the following saturation gradients show a change of the XYZ color 60.8871, 60.7764, 66.2795 by changing the saturation by 10% instead.

60.8871, 60.7764,
66.2795

60.8871, 60.7764,
66.2795

417.6425,
427.4537, 465.8073

44.3863, 44.0447,
48.0414

105.2145,
105.9551, 115.5182

31.1735, 30.7057,
33.4995

133.7717,
135.1710, 147.3559

20.8835, 20.3748,
22.2351

167.0785,
169.3170, 184.5639

13.1508, 12.6678,
13.8298

205.5001,
208.7776, 227.5608

7.6102, 7.2002,
7.8650

249.4020,
253.9372, 276.7650

3.8962, 3.5876,
3.9221

299.1494,

1.6436, 1.4457,

305.1801, 332.5951

1.5827

355.1078,
362.8908, 395.4697

■ 0.4206, 0.2500,
0.2784

■ 0.0000, 0.0000,
0.0000

■ 60.8871, 60.7764,
66.2795

■ 60.8871, 60.7764,
66.2795

■ 54.3253, 50.6110,
54.9708

■ 68.3799, 72.4805,
78.8916

■ 48.6525, 41.9124,
44.9194

■ 76.8331, 85.7755,
92.8434

■ 43.8311, 34.6149,
36.0822

■ 82.7706, 93.6990,
107.0044

■ 39.8189, 28.6446,
28.4120

■ 83.0237, 93.8002,
108.3372

■ 36.5697, 23.9209,
21.8584

■ 34.0329, 20.3541,
16.3672

■ 32.1511, 17.8428,
11.8793

■ 30.8575, 16.2673,
8.3292

■ 30.0540, 15.4468,
5.6365

Harmonies

Analogous

The Analogous color harmony consists of three colors that are next to each other on the color wheel.



60.4438, 60.7764, 70.7583



60.8871, 60.7764, 66.2795



60.4814, 60.7764, 61.9670

Triad

The Triadic color harmony groups three colors that are evenly spaced from another and form a triangle on the color wheel.



60.8871, 60.7764, 66.2795



56.2775, 60.7764, 58.8093



56.2155, 60.7764, 74.0194

Complementary

The Complementary color scheme is a pair of colors which are on the opposite of each other on the color wheel.



60.8871, 60.7764, 66.2795



61.2908, 67.7989, 73.4777

Split Complementary

Split-complementary colors differ from the complementary color scheme. The scheme consists of three colors, the original color and two neighbors of the complement color.



55.1334, 60.7764, 70.5696



60.8871, 60.7764, 66.2795



55.1687, 60.7764, 61.7943

Square

The Square scheme is like the rectangle color scheme, but the four colors are evenly spaced on the color wheel.



60.8871, 60.7764, 66.2795



57.8026, 60.7764, 57.7760



54.7537, 60.7764, 66.0709



57.7297, 60.7764, 75.3512

Rectangle

The Rectangle color scheme consists of four colors that form a rectangle on the color wheel.



60.8871, 60.7764, 66.2795



59.7882, 60.7764, 59.7358



54.7537, 60.7764, 66.0709



55.7902, 60.7764, 73.0614

Sweetspot

The Sweet Spot groups the original color and five complimentary colors.



60.8888, 60.7791, 66.2808



91.7633, 94.8580, 103.3918



61.1545, 60.7120, 75.5139



19.4576, 20.0167, 21.8212



0.0000, 0.0000, 0.0000



20.3446, 21.4041, 23.3091

Same Dimension

The Same Dimension uses a secret algorithm to generate beautiful new colors.



60.8888, 60.7791, 66.2808



84.5683, 83.6439, 91.2021



61.3367, 62.6247, 63.5018



13.1959, 13.1075, 14.2931



17.8076, 9.1241, 3.3668



1.1890, 0.6052, 0.4043

Inverse Universe

The Inverse Universe completely reimagines the original color for something new.



60.8888, 60.7791, 66.2808



84.5683, 83.6439, 91.2021



60.7979, 65.7761, 76.5102



13.1959, 13.1075, 14.2931



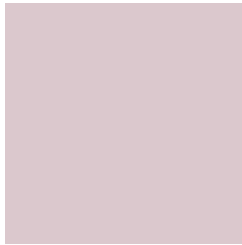
17.8076, 9.1241, 3.3668



1.1890, 0.6052, 0.4043

Previews

White Background



This preview shows how the XYZ color 60.8871, 60.7764, 66.2795 looks on a white background.

Color Contrast Check

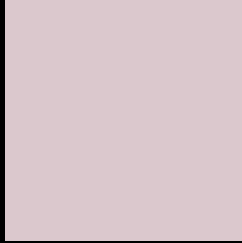
Large Text (above 18pt) WCAG AA × Fail

Any Text WCAG AA × Fail

Large Text (above 18pt) WCAG AAA × Fail

Any Text WCAG AAA × Fail

Black Background



This preview shows how the XYZ color 60.8871, 60.7764, 66.2795 looks on a black background.

Color Contrast Check

Large Text (above 18pt) WCAG AA ✓ Pass

Any Text WCAG AA ✓ Pass

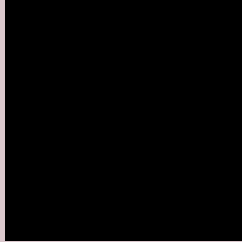
Large Text (above 18pt) WCAG AAA ✓ Pass

Any Text WCAG AAA ✓ Pass

If you want to check with other color combinations, try the [Color Contrast Checker](#).

XYZ 60.8871, 60.7764, 66.2795

Background



This preview shows how black text looks on a background with the XYZ color 60.8871, 60.7764, 66.2795.



This preview shows how white text looks on a background with the XYZ color 60.8871, 60.7764,

Color Blindness Simulation

Color vision deficiency is a very complex topic, and I could not describe the different causes any better than Wikipedia does, so if you want to learn more, you should check out their [article about color blindness](#).

Dichromacy



Original Color

60.8871, 60.7764, 66.2795

Protanopia

58.8678, 61.1006, 67.7224

Deuteranopia

61.9540, 60.6432, 66.1976



Tritanopia

62.0762, 60.9175, 72.1048

Trichromacy



Original Color

60.8871, 60.7764, 66.2795

Protanomaly

59.6479, 61.1652, 67.0548

Deuteranomaly

61.5671, 60.7842, 66.2452

Tritanomaly

61.6965, 60.7656, 70.1052

Monochromacy



Original Color

60.8871, 60.7764, 66.2795

Achromatopsia

58.6655, 61.7207, 67.2138

Achromatomaly

59.5974, 61.4908, 67.1203

CSS Examples

Text

The CSS property to change the color of the text to XYZ 60.8871, 60.7764, 66.2795 is called "color". The color property can be set on classes, ids or directly on the HTML element.

This example shows how text in the color `rgb(219, 200, 205)` looks like.

```
.text, #text, p{  
    color:rgb(219, 200, 205)  
}
```

If you want to add a text shadow in that color use the text-shadow property, you can generate a text shadow directly with our [CSS Text Shadow Generator](#).

Here you see how black text with a 4 pixel rgb(219, 200, 205) colored shadow looks like.

```
.shadow{ text-shadow: 4px 4px 2px rgb(219, 200, 205) }
```

Border

The CSS property to change the border of an element to XYZ 60.8871, 60.7764, 66.2795 is called "border". The border property can be set on classes, ids or directly on the HTML element.

This example shows the color as border, it can be applied via the CSS property "border" or "border-color".

```
.border, #border, table{ border:4px solid rgb(219, 200, 205) }
```


If only the border color should be changed use the property border-color.

```
.border{ border-color:rgb(219, 200, 205) }
```

If you want to add a box shadow in that color use:

Here you see how a box with a 4 pixel rgb(219, 200, 205) colored shadow looks like.

```
.boxshadow{ -moz-box-shadow:4px 4px 4px  
4px rgb(219, 200, 205); -webkit-box-  
shadow:4px 4px 4px 4px rgb(219, 200, 205);  
box-shadow:4px 4px 4px 4px rgb(219, 200,  
205) }
```

Background

The CSS property to change the background color of an element to XYZ 60.8871, 60.7764, 66.2795 is called "background". The background property can be set on classes, ids or directly on the HTML element.

```
.background, #background, body{  
background: rgb(219, 200, 205) }
```

If only the background color should be changed can be used:

```
.background{ background-color: rgb(219,  
200, 205) }
```

This example shows the color as background, it is applied via the CSS property "background".

To optimize and compress your CSS code, you can use our [online CSS compressor and optimizer](#) based on csstidy. If you want to create a linear or radial gradient as background or border, check our [CSS Gradient Generator](#).

Hey! You found this booklet interesting? Support Converting Colors with the new Membership Option!

The pro membership hides all ads, plus gives you double the colors in the color bucket, and more awesome pro features!

[Learn more, Memberships starting at \\$2.50/m!](#)

**Follow me
on Twitter!**

@ConvertingColor