

Converting Colors

XYZ(60.9641, 60.4317, 58.9042)

Have a look what the booklet for
XYZ(60.9641, 60.4317, 58.9042)
contains.

XYZ(60.8711, 60.2460, 58.8725)	3
<i>Conversions</i>	4
<i>Details</i>	6
<i>Harmonies</i>	12
<i>Previews</i>	24
<i>Color Blindness Simulation</i>	28
<i>CSS Examples</i>	31

Color

**XYZ(60.8711, 60.2460,
58.8725)**

Conversions

Conversions Part 1

Format	Color
Hex	E1C6C1
RGB	225, 198, 193
RGB Percent	88%, 78%, 76%
CMY	0.1176, 0.2235, 0.2431
CMYK	0.00, 0.12, 0.14, 0.12
HSL	9°, 35%, 82%
HSV	9°, 14%, 88%
XYZ	60.8711, 60.2460, 58.8725
YIQ	205.5030, 17.6970, 4.1690

Conversions

Conversions Part 2

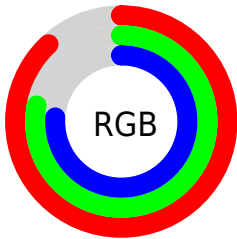
Format	Color
R _Y B	225, 199, 193
Decimal	14796481
CIE Lab	81.97, 8.69, 5.98
CIE LCh	82, 10.551, 34.536
Yxy	60.2460, 0.3382, 0.3347
Android (android.graphics.Color)	4292986561 (0xFFE1C6C1)
YUV	205.5030, -6.1640, 17.0989
Hunter-Lab	77.6183, 4.1542, 9.3621

Details

The XYZ color **60.8711, 60.2460, 58.8725** is a light color, and the websafe version is hex **FFCCCC**. A complement of this color would be **61.1758, 67.9587, 81.1278**, and the grayscale version is **58.3803, 61.4206, 66.8870**.

A 20% lighter version of the original color is **94.0989, 99.6196, 103.8915**, and **31.0691, 30.2750, 29.0171** is the 20% darker color. If you saturate the color by 10%, you get **54.4797, 51.1788, 45.2865**, and if you desaturate by 10%, it is **68.1915, 70.5589, 74.6536**.

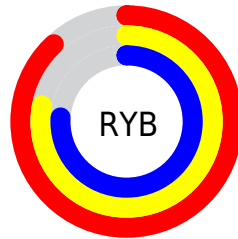
Distribution



Red (88%)

Green (78%)

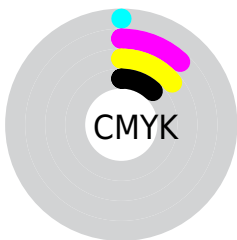
Blue (76%)



Red (88%)

Yellow (78%)

Blue (76%)

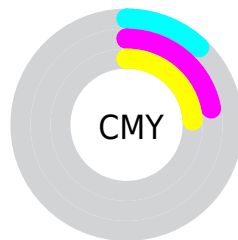


Cyan (0%)

Magenta (12%)

Yellow (14%)

Black (12%)



Cyan (12%)


Magenta (22%)


Yellow (24%)

Brightness & Saturation Gradients


These gradients show how the XYZ color 60.8711, 60.2460, 58.8725 changes by changing the brightness by 10 percent. The first figure shows a shift by +10% for each color and the second figure -10%.


Similar to the brightness gradients but the following saturation gradients show a change of the XYZ color 60.8711, 60.2460, 58.8725 by changing the saturation by 10% instead.


 60.8711, 60.2460,
58.8725

 60.8711, 60.2460,
58.8725


417.5847,
425.5039, 438.1180

 44.3733, 43.6169,
42.0912


 105.1914,
105.1864, 104.7196

 31.1633, 30.3695,
28.8466


133.7447,
134.2666, 134.6225

 20.8756, 20.1192,
18.7202


167.0471,
168.2660, 169.7363

 13.1451, 12.4817,
11.2935

205.4641,
207.5689, 210.4795

 7.6062, 7.0726,
6.1480

249.3610,
252.5597, 257.2708

 3.8937, 3.5076,
2.8650

299.1032,

 1.6422, 1.4021,

303.6229, 310.5286

1.0261

355.0560,
361.1428, 370.6715

■ 0.4197, 0.2183,
0.0000

■ 0.0000, 0.0000,
0.0000

■ 60.8711, 60.2460,
58.8725

■ 60.8711, 60.2460,
58.8725

■ 54.4797, 51.1788,
45.2865

■ 68.1915, 70.5589,
74.6536

■ 48.9752, 43.3021,
33.7944

■ 76.4709, 82.1537,
92.7170

■ 44.3192, 36.5689,
24.2930

■ 84.8458, 94.7160,
108.4179

■ 40.4691, 30.9255,
16.6685

■ 84.8616, 94.7477,
108.4232

■ 37.3781, 26.3142,
10.7960

■ 34.9947, 22.6718,
6.5348

■ 33.2605, 19.9281,
3.7229

■ 32.1072, 18.0027,
2.1634

■ 31.6581, 17.2207,
1.6554

Harmonies

Analogous

The Analogous color harmony consists of three colors that are next to each other on the color wheel.



61.6483, 60.2460, 64.6302



60.8711, 60.2460, 58.8725



59.1273, 60.2460, 55.1133

Triad

The Triadic color harmony groups three colors that are evenly spaced from another and form a triangle on the color wheel.



60.8711, 60.2460, 58.8725



53.4735, 60.2460, 60.4532



57.6022, 60.2460, 78.6307

Complementary

The Complementary color scheme is a pair of colors which are on the opposite of each other on the color wheel.



60.8711, 60.2460, 58.8725



61.1758, 67.9587, 81.1278

Split Complementary

Split-complementary colors differ from the complementary color scheme. The scheme consists of three colors, the original color and two neighbors of the complement color.



55.4364, 60.2460, 77.3338



60.8711, 60.2460, 58.8725



53.0889, 60.2460, 66.5747

Square

The Square scheme is like the rectangle color scheme, but the four colors are evenly spaced on the color wheel.



60.8711, 60.2460, 58.8725



54.8629, 60.2460, 55.9835



53.7985, 60.2460, 72.8164



59.7300, 60.2460, 76.2539

Rectangle

The Rectangle color scheme consists of four colors that form a rectangle on the color wheel.



60.8711, 60.2460, 58.8725



57.6717, 60.2460, 54.1060



53.7985, 60.2460, 72.8164



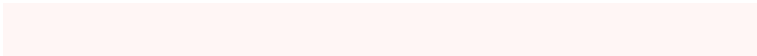
56.8543, 60.2460, 78.6111

Sweetspot

The Sweet Spot groups the original color and five complimentary colors.



60.8728, 60.2487, 58.8738



90.7670, 93.9925, 99.5846



63.0668, 59.3263, 75.9769



19.2604, 19.8831, 20.9521



0.0000, 0.0000, 0.0000



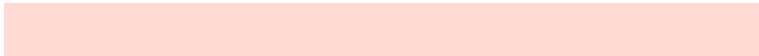
20.3446, 21.4041, 23.3091

Same Dimension

The Same Dimension uses a secret algorithm to generate beautiful new colors.



60.8728, 60.2487, 58.8738



78.2623, 76.3614, 72.6705



64.6737, 67.8505, 60.1408



13.8794, 14.0448, 14.2862



18.2970, 10.0319, 0.9720



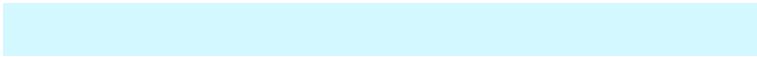
1.3225, 0.8038, 0.0855

Inverse Universe

The Inverse Universe completely reimagines the original color for something new.



61.1758, 67.9587, 81.1278



78.7360, 88.4359, 107.5277



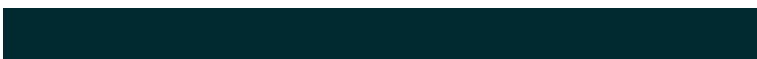
57.2242, 60.0554, 79.8106



13.9245, 15.1881, 17.5854



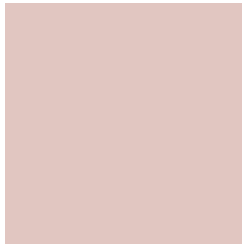
18.4899, 24.4493, 44.7930



1.3314, 1.7943, 3.1214

Previews

White Background



This preview shows how the XYZ color 60.8711, 60.2460, 58.8725 looks on a white background.

Color Contrast Check

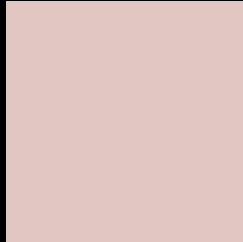
Large Text (above 18pt) WCAG AA × Fail

Any Text WCAG AA × Fail

Large Text (above 18pt) WCAG AAA × Fail

Any Text WCAG AAA × Fail

Black Background



This preview shows how the XYZ color 60.8711, 60.2460, 58.8725 looks on a black background.

Color Contrast Check

Large Text (above 18pt) WCAG AA ✓ Pass

Any Text WCAG AA ✓ Pass

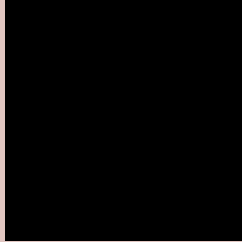
Large Text (above 18pt) WCAG AAA ✓ Pass

Any Text WCAG AAA ✓ Pass

If you want to check with other color combinations, try the [Color Contrast Checker](#).

XYZ 60.8711, 60.2460, 58.8725

Background



This preview shows how black text looks on a background with the XYZ color 60.8711, 60.2460, 58.8725.



This preview shows how white text looks on a background with the XYZ color 60.8711, 60.2460,

58.8725.

Color Blindness Simulation

Color vision deficiency is a very complex topic, and I could not describe the different causes any better than Wikipedia does, so if you want to learn more, you should check out their [article about color blindness](#).

Dichromacy



Original Color

60.8711, 60.2460, 58.8725

Protanopia

57.6142, 60.2527, 60.8179

Deuteranopia

61.5868, 60.2767, 58.8407



Tritanopia

62.9515, 60.0643, 69.9037

Trichromacy



Original Color

60.8711, 60.2460, 58.8725

Protanomaly

58.7613, 60.1605, 60.1448

Deuteranomaly

61.2704, 60.1137, 58.8259

Tritanomaly

62.0030, 60.0082, 65.4416

Monochromacy



Original Color

60.8711, 60.2460, 58.8725

Achromatopsia

58.6655, 61.7207, 67.2138

Achromatomaly

59.3391, 61.0751, 63.9195

CSS Examples

Text

The CSS property to change the color of the text to XYZ 60.8711, 60.2460, 58.8725 is called "color". The color property can be set on classes, ids or directly on the HTML element.

This example shows how text in the color `rgb(225, 198, 193)` looks like.

```
.text, #text, p{  
    color:rgb(225, 198, 193)  
}
```

If you want to add a text shadow in that color use the text-shadow property, you can generate a text shadow directly with our [CSS Text Shadow Generator](#).

Here you see how black text with a 4 pixel rgb(225, 198, 193) colored shadow looks like.

```
.shadow{ text-shadow: 4px 4px 2px rgb(225, 198, 193) }
```

Border

The CSS property to change the border of an element to XYZ 60.8711, 60.2460, 58.8725 is called "border". The border property can be set on classes, ids or directly on the HTML element.

This example shows the color as border, it can be applied via the CSS property "border" or "border-color".

```
.border, #border, table{ border:4px solid rgb(225, 198, 193) }
```


If only the border color should be changed use the property `border-color`.

```
.border{ border-color:rgb(225, 198, 193) }
```

If you want to add a box shadow in that color use:

Here you see how a box with a 4 pixel `rgb(225, 198, 193)` colored shadow looks like.

```
.boxshadow{ -moz-box-shadow:4px 4px 4px  
4px rgb(225, 198, 193); -webkit-box-  
shadow:4px 4px 4px 4px rgb(225, 198, 193);  
box-shadow:4px 4px 4px 4px rgb(225, 198,  
193) }
```

Background

The CSS property to change the background color of an element to XYZ 60.8711, 60.2460, 58.8725 is called "background". The background property can be set on classes, ids or directly on the HTML element.

```
.background, #background, body{  
background: rgb(225, 198, 193) }
```

If only the background color should be changed can be used:

```
.background{ background-color: rgb(225,  
198, 193) }
```

This example shows the color as background, it is applied via the CSS property "background".

To optimize and compress your CSS code, you can use our [online CSS compressor and optimizer](#) based on csstidy. If you want to create a linear or radial gradient as background or border, check our [CSS Gradient Generator](#).

Hey! You found this booklet interesting? Support Converting Colors with the new Membership Option!

The pro membership hides all ads, plus gives you double the colors in the color bucket, and more awesome pro features!

[Learn more, Memberships starting at \\$2.50/m!](#)

**Follow me
on Twitter!**

@ConvertingColor