

Converting Colors

XYZ(60.9733, 60.6898, 56.6461)

Have a look what the booklet for
XYZ(60.9733, 60.6898, 56.6461)
contains.

XYZ(60.9728, 60.6897, 56.6448)	3
<i>Conversions</i>	4
<i>Details</i>	6
<i>Harmonies</i>	12
<i>Previews</i>	24
<i>Color Blindness Simulation</i>	28
<i>CSS Examples</i>	31

Color

**XYZ(60.9728, 60.6897,
56.6448)**

Conversions

Conversions Part 1

Format	Color
Hex	E2C7BD
RGB	226, 199, 189
RGB Percent	89%, 78%, 74%
CMY	0.1137, 0.2196, 0.2588
CMYK	0.00, 0.12, 0.16, 0.11
HSL	16°, 39%, 81%
HSV	16°, 16%, 89%
XYZ	60.9728, 60.6897, 56.6448
YIQ	205.9330, 19.3020, 2.6140

Conversions

Conversions Part 2

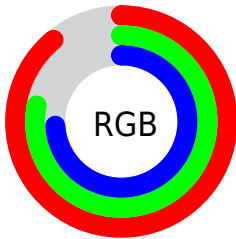
Format	Color
R _Y B	226, 203, 189
Decimal	14862269
CIE Lab	82.21, 7.90, 8.48
CIE LCh	82, 11.586, 47.027
Yxy	60.6897, 0.3420, 0.3404
Android (android.graphics.Color)	4293052349 (0xFFE2C7BD)
YUV	205.9330, -8.3480, 17.5988
Hunter-Lab	77.9036, 3.3753, 11.4219

Details

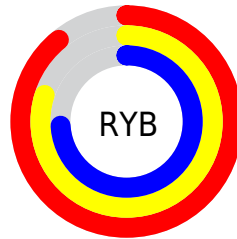
The XYZ color **60.9728, 60.6897, 56.6448** is a light color, and the websafe version is hex **FFCCCC**. A complement of this color would be **59.2693, 65.4203, 81.4557**, and the grayscale version is **58.6678, 61.7231, 67.2165**.

A 20% lighter version of the original color is **93.4814, 99.3726, 100.6400**, and **31.1469, 30.5744, 27.5524** is the 20% darker color. If you saturate the color by 10%, you get **55.1179, 52.6044, 43.5184**, and if you desaturate by 10%, it is **67.6244, 69.7556, 71.9242**.

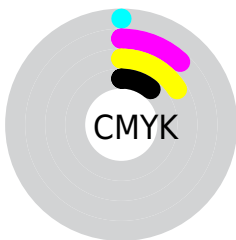
Distribution



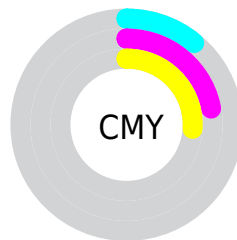
- Red (89%)
- Green (78%)
- Blue (74%)



- Red (89%)
- Yellow (80%)
- Blue (74%)



- Cyan (0%)
- Magenta (12%)
- Yellow (16%)
- Black (11%)




- Cyan (11%)
- Magenta (22%)
- Yellow (26%)

Brightness & Saturation Gradients


These gradients show how the XYZ color 60.9728, 60.6897, 56.6448 changes by changing the brightness by 10 percent. The first figure shows a shift by +10% for each color and the second figure -10%.


Similar to the brightness gradients but the following saturation gradients show a change of the XYZ color 60.9728, 60.6897, 56.6448 by changing the saturation by 10% instead.


 60.9728, 60.6897,
56.6448

 60.9728, 60.6897,
56.6448

417.9518,
427.1353, 429.5734

 44.4557, 43.9748,
40.3127


 105.3379,
105.8295, 101.4419

 31.2283, 30.6507,
27.4668


133.9166,
135.0232, 130.7440

 20.9255, 20.3330,
17.6886


167.2465,
169.1453, 165.2064

 13.1817, 12.6373,
10.5595

205.6929,
208.5802, 205.2478

 7.6316, 7.1793,
5.6610

249.6214,
253.7122, 251.2866

 3.9100, 3.5745,
2.5747

299.3971,

 1.6513, 1.4385,

304.9258, 303.7415

0.8793

355.3854,
362.6054, 363.0309

■ 0.4255, 0.2448,
0.0000

■ 0.0000, 0.0000,
0.0000

■ 60.9728, 60.6897,
56.6448

■ 60.9728, 60.6897,
56.6448

■ 55.1179, 52.6044,
43.5184

■ 67.6244, 69.7556,
71.9242

■ 50.0242, 45.4585,
32.4438

■ 75.0968, 79.8254,
89.4437

■ 45.6605, 39.2195,
23.3175

■ 83.1276, 90.8155,
107.7556

■ 41.9914, 33.8502,
16.0252

■ 85.1743, 94.9089,
108.4378

■ 38.9788, 29.3105,
10.4408

■ 36.5799, 25.5571,
6.4218

■ 34.7468, 22.5423,
3.8023

■ 33.4217, 20.2118,
2.3752

■ 33.0387, 19.5177,
2.0260

Harmonies

Analogous

The Analogous color harmony consists of three colors that are next to each other on the color wheel.



62.3319, 60.6897, 62.1880



60.9728, 60.6897, 56.6448



58.7535, 60.6897, 53.7246

Triad

The Triadic color harmony groups three colors that are evenly spaced from another and form a triangle on the color wheel.



60.9728, 60.6897, 56.6448



53.1904, 60.6897, 63.0822



59.0817, 60.6897, 79.9174

Complementary

The Complementary color scheme is a pair of colors which are on the opposite of each other on the color wheel.



60.9728, 60.6897, 56.6448



59.2693, 65.4203, 81.4557

Split Complementary

Split-complementary colors differ from the complementary color scheme. The scheme consists of three colors, the original color and two neighbors of the complement color.



56.6270, 60.6897, 80.1996



60.9728, 60.6897, 56.6448



53.2726, 60.6897, 70.1327

Square

The Square scheme is like the rectangle color scheme, but the four colors are evenly spaced on the color wheel.



60.9728, 60.6897, 56.6448



54.2873, 60.6897, 57.2592



54.5151, 60.6897, 76.5104



61.2190, 60.6897, 75.7648

Rectangle

The Rectangle color scheme consists of four colors that form a rectangle on the color wheel.



60.9728, 60.6897, 56.6448



57.1063, 60.6897, 53.5120



54.5151, 60.6897, 76.5104



58.2651, 60.6897, 80.4779

Sweetspot

The Sweet Spot groups the original color and five complimentary colors.



60.9745, 60.6924, 56.6461



90.1684, 93.4134, 97.4796



61.9743, 57.5296, 72.8948



19.1576, 19.8020, 20.5341



0.0000, 0.0000, 0.0000



20.3446, 21.4041, 23.3091

Same Dimension

The Same Dimension uses a secret algorithm to generate beautiful new colors.



60.9745, 60.6924, 56.6461



77.1559, 75.6533, 67.6627



65.4575, 69.6586, 58.1404



14.0072, 14.3005, 14.3288



18.9328, 11.3034, 1.1839



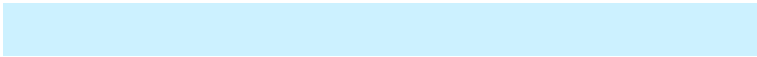
1.3855, 0.9298, 0.1064

Inverse Universe

The Inverse Universe completely reimagines the original color for something new.



59.2693, 65.4203, 81.4557



74.4695, 83.0927, 106.7213



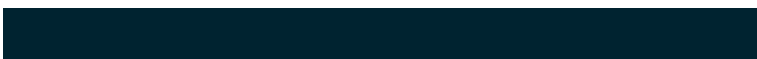
54.8249, 56.5314, 79.9742



13.7868, 14.9127, 17.5395



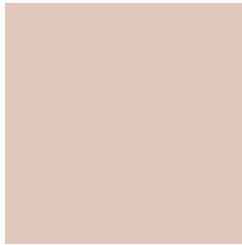
15.5999, 18.6694, 43.8297



1.1542, 1.4399, 3.0623

Previews

White Background



This preview shows how the XYZ color 60.9728, 60.6897, 56.6448 looks on a white background.

Color Contrast Check

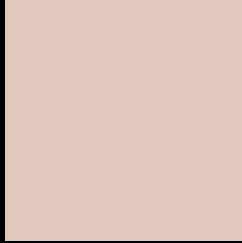
Large Text (above 18pt) WCAG AA × Fail

Any Text WCAG AA × Fail

Large Text (above 18pt) WCAG AAA × Fail

Any Text WCAG AAA × Fail

Black Background



This preview shows how the XYZ color 60.9728, 60.6897, 56.6448 looks on a black background.

Color Contrast Check

Large Text (above 18pt) WCAG AA ✓ Pass

Any Text WCAG AA ✓ Pass

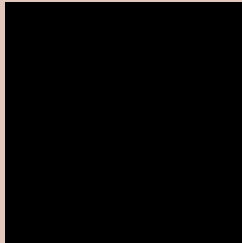
Large Text (above 18pt) WCAG AAA ✓ Pass

Any Text WCAG AAA ✓ Pass

If you want to check with other color combinations, try the [Color Contrast Checker](#).

XYZ 60.9728, 60.6897, 56.6448

Background



This preview shows how black text looks on a background with the XYZ color 60.9728, 60.6897, 56.6448.



This preview shows how white text looks on a background with the XYZ color 60.9728, 60.6897,

Color Blindness Simulation

Color vision deficiency is a very complex topic, and I could not describe the different causes any better than Wikipedia does, so if you want to learn more, you should check out their [article about color blindness](#).

Dichromacy



Original Color

60.9728, 60.6897, 56.6448

Protanopia

57.9713, 60.8404, 58.5571

Deuteranopia

61.7847, 60.4296, 56.5518



Tritanopia

63.8109, 60.8410, 70.0083

Trichromacy



Original Color

60.9728, 60.6897, 56.6448

Protanomaly

58.8434, 60.6016, 57.8861

Deuteranomaly

61.6925, 60.7203, 56.6128

Tritanomaly

62.7407, 60.7383, 64.9168

Monochromacy



Original Color

60.9728, 60.6897, 56.6448

Achromatopsia

58.6655, 61.7207, 67.2138

Achromatomaly

59.2218, 61.0281, 63.3019

CSS Examples

Text

The CSS property to change the color of the text to XYZ 60.9728, 60.6897, 56.6448 is called "color". The color property can be set on classes, ids or directly on the HTML element.

This example shows how text in the color `rgb(226, 199, 189)` looks like.

```
.text, #text, p{  
    color:rgb(226, 199, 189)  
}
```

If you want to add a text shadow in that color use the text-shadow property, you can generate a text shadow directly with our [CSS Text Shadow Generator](#).

Here you see how black text with a 4 pixel rgb(226, 199, 189) colored shadow looks like.

```
.shadow{ text-shadow: 4px 4px 2px rgb(226, 199, 189) }
```

Border

The CSS property to change the border of an element to XYZ 60.9728, 60.6897, 56.6448 is called "border". The border property can be set on classes, ids or directly on the HTML element.

This example shows the color as border, it can be applied via the CSS property "border" or "border-color".

```
.border, #border, table{ border:4px solid rgb(226, 199, 189) }
```


If only the border color should be changed use the property `border-color`.

```
.border{ border-color:rgb(226, 199, 189) }
```

If you want to add a box shadow in that color use:

Here you see how a box with a 4 pixel `rgb(226, 199, 189)` colored shadow looks like.

```
.boxshadow{ -moz-box-shadow:4px 4px 4px 4px rgb(226, 199, 189); -webkit-box-shadow:4px 4px 4px 4px rgb(226, 199, 189); box-shadow:4px 4px 4px 4px rgb(226, 199, 189) }
```

Background

The CSS property to change the background color of an element to XYZ 60.9728, 60.6897, 56.6448 is called "background". The background property can be set on classes, ids or directly on the HTML element.

```
.background, #background, body{  
background: rgb(226, 199, 189) }
```

If only the background color should be changed can be used:

```
.background{ background-color: rgb(226,  
199, 189) }
```

This example shows the color as background, it is applied via the CSS property "background".

To optimize and compress your CSS code, you can use our [online CSS compressor and optimizer](#) based on csstidy. If you want to create a linear or radial gradient as background or border, check our [CSS Gradient Generator](#).

Hey! You found this booklet interesting? Support Converting Colors with the new Membership Option!

The pro membership hides all ads, plus gives you double the colors in the color bucket, and more awesome pro features!

[Learn more, Memberships starting at \\$2.50/m!](#)

**Follow me
on Twitter!**

@ConvertingColor