

Converting Colors

XYZ(61.0036, 62.8434, 59.5246)

Have a look what the booklet for
XYZ(61.0036, 62.8434, 59.5246)
contains.

XYZ(60.9722, 62.7285, 59.3463)	3
<i>Conversions</i>	4
<i>Details</i>	6
<i>Harmonies</i>	12
<i>Previews</i>	24
<i>Color Blindness Simulation</i>	28
<i>CSS Examples</i>	31

Color

**XYZ(60.9722, 62.7285,
59.3463)**

Conversions

Conversions Part 1

Format	Color
Hex	DCCDC1
RGB	220, 205, 193
RGB Percent	86%, 80%, 76%
CMY	0.1373, 0.1961, 0.2431
CMYK	0.00, 0.07, 0.12, 0.14
HSL	27°, 28%, 81%
HSV	27°, 12%, 86%
XYZ	60.9722, 62.7285, 59.3463
YIQ	208.1170, 12.7920, -0.5520

Conversions

Conversions Part 2

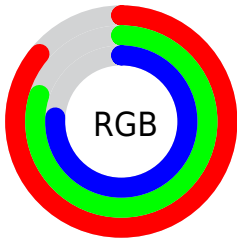
Format	Color
R_{YB}	220, 215, 193
Decimal	14470593
CIE _{Lab}	83.30, 3.21, 7.83
CIE _{LCh}	83, 8.466, 67.734
Yxy	62.7285, 0.3331, 0.3427
Android (android.graphics.Color)	4292660673 (0xFFDCCDC1)
YUV	208.1170, -7.4527, 10.4214
Hunter-Lab	79.2013, -1.1862, 11.0144

Details

The XYZ color **60.9722, 62.7285, 59.3463** is a light color, and the websafe version is hex **CCCCCC**. A complement of this color would be **57.4664, 61.6155, 76.5751**, and the grayscale version is **60.0725, 63.2010, 68.8258**.

A 20% lighter version of the original color is **94.0989, 99.6196, 103.8915**, and **31.3173, 32.0260, 29.3420** is the 20% darker color. If you saturate the color by 10%, you get **55.8891, 56.2015, 46.4311**, and if you desaturate by 10%, it is **66.6522, 69.8637, 74.2632**.

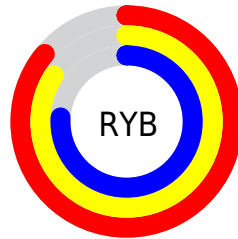
Distribution



Red (86%)

Green (80%)

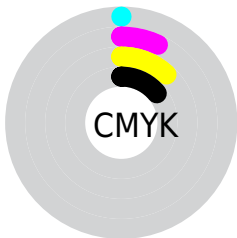
Blue (76%)



Red (86%)

Yellow (84%)

Blue (76%)

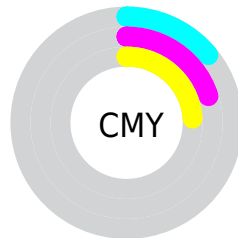


Cyan (0%)

Magenta (7%)

Yellow (12%)

Black (14%)



Cyan (14%)

Magenta (20%)

Yellow (24%)

Brightness & Saturation Gradients

These gradients show how the XYZ color 60.9722, 62.7285, 59.3463 changes by changing the brightness by 10 percent. The first figure shows a shift by +10% for each color and the second figure -10%.

Similar to the brightness gradients but the following saturation gradients show a change of the XYZ color 60.9722, 62.7285, 59.3463 by changing the saturation by 10% instead.

60.9722, 62.7285,
59.3463

60.9722, 62.7285,
59.3463

417.9496,
434.5835, 439.9216

44.4552, 45.6216,
42.4701

105.3370,
108.7777, 105.4149

31.2280, 31.9473,
29.1413

133.9155,
138.4888, 135.4443

20.9252, 21.3213,
18.9412

167.2453,
173.1702, 170.6953

13.1815, 13.3590,
11.4514

205.6916,
213.2061, 211.5863

7.6315, 7.6762,
6.2534

249.6198,
258.9810, 258.5359

3.9099, 3.8885,
2.9285

299.3953,

1.6513, 1.6114,

310.8792, 311.9626

1.0582

355.3835,
369.2853, 372.2850

■ 0.4255, 0.3653,
0.0000

■ 0.0000, 0.0000,
0.0000

■ 60.9722, 62.7285,
59.3463

■ 60.9722, 62.7285,
59.3463

■ 55.8891, 56.2015,
46.4311

■ 66.6522, 69.8637,
74.2632

■ 51.3764, 50.2577,
35.4272

■ 72.9441, 77.6147,
91.2587

■ 47.4133, 44.8820,
26.2432

■ 79.2174, 85.7395,
106.9819

■ 43.9755, 40.0559,
18.7787

■ 82.9699, 93.2445,
108.2327

■ 41.0365, 35.7594,
12.9232

■ 83.3255, 93.9558,
108.3513

■ 38.5672, 31.9714,
8.5534

■ 36.5348, 28.6684,
5.5275

■ 34.9007, 25.8243,
3.6755

■ 33.8654, 23.9156,
2.8313

Harmonies

Analogous

The Analogous color harmony consists of three colors that are next to each other on the color wheel.



62.4636, 62.7285, 62.2854



60.9722, 62.7285, 59.3463



59.1467, 62.7285, 58.7443

Triad

The Triadic color harmony groups three colors that are evenly spaced from another and form a triangle on the color wheel.



60.9722, 62.7285, 59.3463



56.1840, 62.7285, 69.6733



61.8131, 62.7285, 76.6315

Complementary

The Complementary color scheme is a pair of colors which are on the opposite of each other on the color wheel.



60.9722, 62.7285, 59.3463



57.4664, 61.6155, 76.5751

Split Complementary

Split-complementary colors differ from the complementary color scheme. The scheme consists of three colors, the original color and two neighbors of the complement color.



60.0989, 62.7285, 78.8410



60.9722, 62.7285, 59.3463



56.8671, 62.7285, 74.6913

Square

The Square scheme is like the rectangle color scheme, but the four colors are evenly spaced on the color wheel.



60.9722, 62.7285, 59.3463



56.4070, 62.7285, 64.5329



58.2910, 62.7285, 78.1133



62.9560, 62.7285, 72.2124

Rectangle

The Rectangle color scheme consists of four colors that form a rectangle on the color wheel.



60.9722, 62.7285, 59.3463



57.9902, 62.7285, 59.7190



58.2910, 62.7285, 78.1133



61.2832, 62.7285, 77.6674

Sweetspot

The Sweet Spot groups the original color and five complimentary colors.



60.9739, 62.7313, 59.3476



91.6702, 95.7989, 99.8857



60.0081, 57.9253, 67.8870



19.4885, 20.3391, 21.0281



0.0000, 0.0000, 0.0000



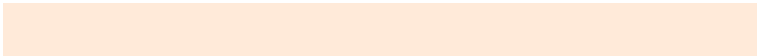
20.3446, 21.4041, 23.3091

Same Dimension

The Same Dimension uses a secret algorithm to generate beautiful new colors.



60.9739, 62.7313, 59.3476



83.0851, 84.9632, 77.4958



64.2650, 69.3134, 60.4447



13.5302, 13.9997, 13.7147



19.9824, 14.2504, 1.6974



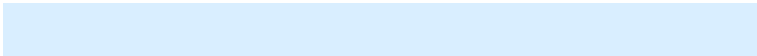
1.3796, 1.0933, 0.1383

Inverse Universe

The Inverse Universe completely reimagines the original color for something new.



57.4664, 61.6155, 76.5751



77.1640, 83.0793, 106.5767



54.3818, 55.4463, 75.5469



12.9354, 13.8105, 16.6361



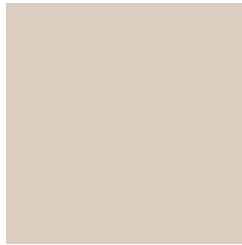
11.7927, 11.4548, 41.3279



0.8494, 0.9130, 2.7059

Previews

White Background



This preview shows how the XYZ color 60.9722, 62.7285, 59.3463 looks on a white background.

Color Contrast Check

Large Text (above 18pt) WCAG AA × Fail

Any Text WCAG AA × Fail

Large Text (above 18pt) WCAG AAA × Fail

Any Text WCAG AAA × Fail

Black Background



This preview shows how the XYZ color 60.9722, 62.7285, 59.3463 looks on a black background.

Color Contrast Check

Large Text (above 18pt) WCAG AA ✓ Pass

Any Text WCAG AA ✓ Pass

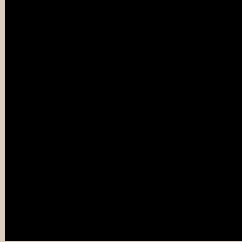
Large Text (above 18pt) WCAG AAA ✓ Pass

Any Text WCAG AAA ✓ Pass

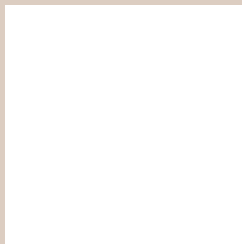
If you want to check with other color combinations, try the [Color Contrast Checker](#).

XYZ 60.9722, 62.7285, 59.3463

Background



This preview shows how black text looks on a background with the XYZ color 60.9722, 62.7285, 59.3463.



This preview shows how white text looks on a background with the XYZ color 60.9722, 62.7285,

Color Blindness Simulation

Color vision deficiency is a very complex topic, and I could not describe the different causes any better than Wikipedia does, so if you want to learn more, you should check out their [article about color blindness](#).

Dichromacy



Original Color

60.9722, 62.7285, 59.3463

Protanopia

59.7820, 62.8168, 60.0129

Deuteranopia

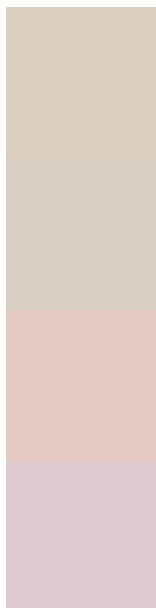
63.9962, 62.5272, 59.7349



Tritanopia

63.8425, 62.4710, 74.3389

Trichromacy



Original Color

60.9722, 62.7285, 59.3463

Protanomaly

60.1278, 62.6366, 59.9599

Deuteranomaly

62.8530, 62.6301, 59.8150

Tritanomaly

62.6299, 62.3247, 68.4034

Monochromacy



Original Color

60.9722, 62.7285, 59.3463

Achromatopsia

59.9535, 63.0757, 68.6895

Achromatomaly

60.2437, 62.9345, 65.4723

CSS Examples

Text

The CSS property to change the color of the text to XYZ 60.9722, 62.7285, 59.3463 is called "color". The color property can be set on classes, ids or directly on the HTML element.

This example shows how text in the color `rgb(220, 205, 193)` looks like.

```
.text, #text, p{  
    color:rgb(220, 205, 193)  
}
```

If you want to add a text shadow in that color use the text-shadow property, you can generate a text shadow directly with our [CSS Text Shadow Generator](#).

Here you see how black text with a 4 pixel rgb(220, 205, 193) colored shadow looks like.

```
.shadow{ text-shadow: 4px 4px 2px rgb(220, 205, 193) }
```

Border

The CSS property to change the border of an element to XYZ 60.9722, 62.7285, 59.3463 is called "border". The border property can be set on classes, ids or directly on the HTML element.

This example shows the color as border, it can be applied via the CSS property "border" or "border-color".

```
.border, #border, table{ border:4px solid rgb(220, 205, 193) }
```


If only the border color should be changed use the property border-color.

```
.border{ border-color:rgb(220, 205, 193) }
```

If you want to add a box shadow in that color use:

Here you see how a box with a 4 pixel rgb(220, 205, 193) colored shadow looks like.

```
.boxshadow{ -moz-box-shadow:4px 4px 4px  
4px rgb(220, 205, 193); -webkit-box-  
shadow:4px 4px 4px 4px rgb(220, 205, 193);  
box-shadow:4px 4px 4px 4px rgb(220, 205,  
193) }
```

Background

The CSS property to change the background color of an element to XYZ 60.9722, 62.7285, 59.3463 is called "background". The background property can be set on classes, ids or directly on the HTML element.

```
.background, #background, body{  
background: rgb(220, 205, 193) }
```

If only the background color should be changed can be used:

```
.background{ background-color: rgb(220,  
205, 193) }
```

This example shows the color as background, it is applied via the CSS property "background".

To optimize and compress your CSS code, you can use our [online CSS compressor and optimizer](#) based on csstidy. If you want to create a linear or radial gradient as background or border, check our [CSS Gradient Generator](#).

Hey! You found this booklet interesting? Support Converting Colors with the new Membership Option!

The pro membership hides all ads, plus gives you double the colors in the color bucket, and more awesome pro features!

[Learn more, Memberships starting at \\$2.50/m!](#)

**Follow me
on Twitter!**

@ConvertingColor