

Converting Colors

XYZ(61.1035, 59.8445, 59.7808)

Have a look what the booklet for
XYZ(61.1035, 59.8445, 59.7808)
contains.

XYZ(61.1806, 60.0414, 59.9943)	3
<i>Conversions</i>	4
<i>Details</i>	6
<i>Harmonies</i>	12
<i>Previews</i>	24
<i>Color Blindness Simulation</i>	28
<i>CSS Examples</i>	31

Color

**XYZ(61.1806, 60.0414,
59.9943)**

Conversions

Conversions Part 1

Format	Color
Hex	E2C5C3
RGB	226, 197, 195
RGB Percent	89%, 77%, 76%
CMY	0.1137, 0.2274, 0.2353
CMYK	0.00, 0.13, 0.14, 0.11
HSL	4°, 35%, 83%
HSV	4°, 14%, 89%
XYZ	61.1806, 60.0414, 59.9943
YIQ	205.4430, 17.9260, 5.5260

Conversions

Conversions Part 2

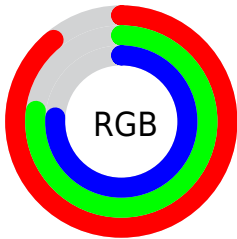
Format	Color
R _Y B	226, 197, 195
Decimal	14861763
CIE Lab	81.86, 9.90, 4.76
CIE LCh	82, 10.985, 25.689
Yxy	60.0414, 0.3376, 0.3313
Android (android.graphics.Color)	4293051843 (0xFFE2C5C3)
YUV	205.4430, -5.1484, 18.0285
Hunter-Lab	77.4864, 5.3363, 8.3348

Details

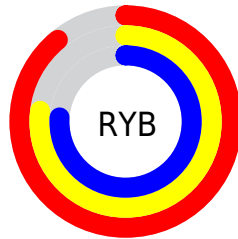
The XYZ color **61.1806, 60.0414, 59.9943** is a light color, and the websafe version is hex **FFCCCC**. A complement of this color would be **62.8883, 70.4028, 82.2266**, and the grayscale version is **58.3356, 61.3736, 66.8358**.

A 20% lighter version of the original color is **94.2525, 99.1719, 106.2699**, and **31.2077, 30.1141, 29.3671** is the 20% darker color. If you saturate the color by 10%, you get **54.3485, 50.1612, 46.0497**, and if you desaturate by 10%, it is **69.0759, 71.4278, 76.2028**.

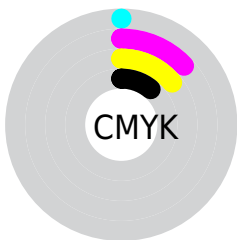
Distribution



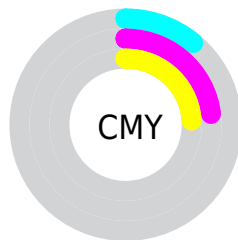
- Red (89%)
- Green (77%)
- Blue (76%)



- Red (89%)
- Yellow (77%)
- Blue (76%)



- Cyan (0%)
- Magenta (13%)
- Yellow (14%)
- Black (11%)





- Cyan (11%)
- Magenta (23%)
- Yellow (24%)

Brightness & Saturation Gradients


These gradients show how the XYZ color 61.1806, 60.0414, 59.9943 changes by changing the brightness by 10 percent. The first figure shows a shift by +10% for each color and the second figure -10%.


Similar to the brightness gradients but the following saturation gradients show a change of the XYZ color 61.1806, 60.0414, 59.9943 by changing the saturation by 10% instead.


 61.1806, 60.0414,
59.9943

 61.1806, 60.0414,
59.9943


418.7012,
424.7504, 442.3808

 44.6240, 43.4520,
42.9888


 105.6370,
104.8897, 106.3647

 31.3614, 30.2399,
29.5450


134.2676,
133.9174, 136.5666

 21.0274, 20.0208,
19.2444

167.6535,
167.8600, 172.0045

 13.2566, 12.4101,
11.6684

206.1602,
207.1020, 213.0967

 7.6837, 7.0236,
6.3985

250.1529,
252.0275, 260.2619

 3.9433, 3.4769,
3.0162

299.9971,

 1.6701, 1.3855,

303.0212, 313.9187

1.1029

356.0581,
360.4673, 374.4855

■ 0.4375, 0.2060,
0.0000

■ 0.0000, 0.0000,
0.0000

■ 61.1806, 60.0414,
59.9943

■ 61.1806, 60.0414,
59.9943

■ 54.3485, 50.1612,
46.0497

■ 69.0759, 71.4278,
76.2028

■ 48.5294, 41.7166,
34.2646

■ 78.0720, 84.3712,
94.7655

■ 43.6765, 34.6431,
24.5323

■ 85.1743, 94.9089,
108.4378

■ 39.7375, 28.8685,
16.7351

■ 36.6550, 24.3135,
10.7439

■ 34.3651, 20.8907,
6.4135

■ 32.7948, 18.5006,
3.5764

■ 31.8577, 17.0266,
2.0300

■ 31.5297, 16.4996,
1.5230

Harmonies

Analogous

The Analogous color harmony consists of three colors that are next to each other on the color wheel.



61.6301, 60.0414, 66.3395



61.1806, 60.0414, 59.9943



59.6179, 60.0414, 55.3846

Triad

The Triadic color harmony groups three colors that are evenly spaced from another and form a triangle on the color wheel.



61.1806, 60.0414, 59.9943



53.4634, 60.0414, 58.4379



56.7330, 60.0414, 78.9527

Complementary

The Complementary color scheme is a pair of colors which are on the opposite of each other on the color wheel.



61.1806, 60.0414, 59.9943



62.8883, 70.4028, 82.2266

Split Complementary

Split-complementary colors differ from the complementary color scheme. The scheme consists of three colors, the original color and two neighbors of the complement color.



54.5910, 60.0414, 76.4997



61.1806, 60.0414, 59.9943



52.7359, 60.0414, 64.4197

Square

The Square scheme is like the rectangle color scheme, but the four colors are evenly spaced on the color wheel.



61.1806, 60.0414, 59.9943



55.1565, 60.0414, 54.5296



53.1431, 60.0414, 71.0679



59.0222, 60.0414, 77.5705

Rectangle

The Rectangle color scheme consists of four colors that form a rectangle on the color wheel.



61.1806, 60.0414, 59.9943



58.1768, 60.0414, 53.7659



53.1431, 60.0414, 71.0679



55.9725, 60.0414, 78.5450

Sweetspot

The Sweet Spot groups the original color and five complimentary colors.



61.1823, 60.0441, 59.9956



90.4825, 93.4235, 99.4898



64.3955, 60.6060, 79.1461



19.1888, 19.7397, 20.9282



0.0000, 0.0000, 0.0000



20.3446, 21.4041, 23.3091

Same Dimension

The Same Dimension uses a secret algorithm to generate beautiful new colors.



61.1823, 60.0441, 59.9956



78.1742, 75.6674, 74.2374



64.7710, 67.2216, 61.1918



13.7780, 13.8420, 14.2524



18.0172, 9.4723, 0.8787



1.2743, 0.7074, 0.0694

Inverse Universe

The Inverse Universe completely reimagines the original color for something new.



62.8883, 70.4028, 82.2266



80.7642, 91.3948, 107.9920



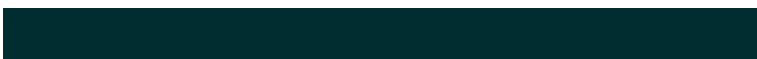
59.0221, 62.6702, 80.9378



14.0367, 15.4126, 17.6228



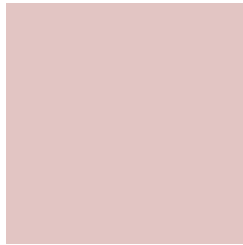
21.2100, 29.8896, 45.6998



1.4934, 2.1182, 3.1754

Previews

White Background



This preview shows how the XYZ color 61.1806, 60.0414, 59.9943 looks on a white background.

Color Contrast Check

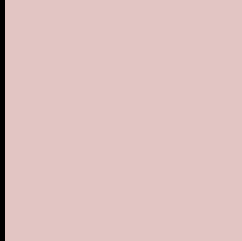
Large Text (above 18pt) WCAG AA × Fail

Any Text WCAG AA × Fail

Large Text (above 18pt) WCAG AAA × Fail

Any Text WCAG AAA × Fail

Black Background



This preview shows how the XYZ color 61.1806, 60.0414, 59.9943 looks on a black background.

Color Contrast Check

Large Text (above 18pt) WCAG AA ✓ Pass

Any Text WCAG AA ✓ Pass

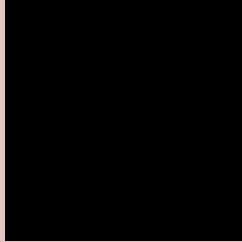
Large Text (above 18pt) WCAG AAA ✓ Pass

Any Text WCAG AAA ✓ Pass

If you want to check with other color combinations, try the [Color Contrast Checker](#).

XYZ 61.1806, 60.0414, 59.9943

Background



This preview shows how black text looks on a background with the XYZ color 61.1806, 60.0414, 59.9943.



This preview shows how white text looks on a background with the XYZ color 61.1806, 60.0414,

Color Blindness Simulation

Color vision deficiency is a very complex topic, and I could not describe the different causes any better than Wikipedia does, so if you want to learn more, you should check out their [article about color blindness](#).

Dichromacy



Original Color

61.1806, 60.0414, 59.9943

Protanopia

57.8435, 60.3444, 62.0250

Deuteranopia

61.4951, 60.2035, 60.0091



Tritanopia

63.1429, 60.1773, 69.2602

Trichromacy



Original Color

61.1806, 60.0414, 59.9943

Protanomaly

58.9890, 60.2516, 61.3440

Deuteranomaly

61.4951, 60.2035, 60.0091

Tritanomaly

62.4379, 60.2185, 66.0901

Monochromacy



Original Color

61.1806, 60.0414, 59.9943

Achromatopsia

58.0276, 61.0496, 66.4830

Achromatomaly

59.1037, 60.6042, 63.8410

CSS Examples

Text

The CSS property to change the color of the text to XYZ 61.1806, 60.0414, 59.9943 is called "color". The color property can be set on classes, ids or directly on the HTML element.

This example shows how text in the color `rgb(226, 197, 195)` looks like.

```
.text, #text, p{  
    color:rgb(226, 197, 195)  
}
```

If you want to add a text shadow in that color use the text-shadow property, you can generate a text shadow directly with our [CSS Text Shadow Generator](#).

Here you see how black text with a 4 pixel rgb(226, 197, 195) colored shadow looks like.

```
.shadow{ text-shadow: 4px 4px 2px rgb(226, 197, 195) }
```

Border

The CSS property to change the border of an element to XYZ 61.1806, 60.0414, 59.9943 is called "border". The border property can be set on classes, ids or directly on the HTML element.

This example shows the color as border, it can be applied via the CSS property "border" or "border-color".

```
.border, #border, table{ border:4px solid rgb(226, 197, 195) }
```


If only the border color should be changed use the property border-color.

```
.border{ border-color:rgb(226, 197, 195) }
```

If you want to add a box shadow in that color use:

Here you see how a box with a 4 pixel rgb(226, 197, 195) colored shadow looks like.

```
.boxshadow{ -moz-box-shadow:4px 4px 4px  
4px rgb(226, 197, 195); -webkit-box-  
shadow:4px 4px 4px 4px rgb(226, 197, 195);  
box-shadow:4px 4px 4px 4px rgb(226, 197,  
195) }
```

Background

The CSS property to change the background color of an element to XYZ 61.1806, 60.0414, 59.9943 is called "background". The background property can be set on classes, ids or directly on the HTML element.

```
.background, #background, body{  
background: rgb(226, 197, 195) }
```

If only the background color should be changed can be used:

```
.background{ background-color: rgb(226,  
197, 195) }
```

This example shows the color as background, it is applied via the CSS property "background".

To optimize and compress your CSS code, you can use our [online CSS compressor and optimizer](#) based on csstidy. If you want to create a linear or radial gradient as background or border, check our [CSS Gradient Generator](#).

Hey! You found this booklet interesting? Support Converting Colors with the new Membership Option!

The pro membership hides all ads, plus gives you double the colors in the color bucket, and more awesome pro features!

[Learn more, Memberships starting at \\$2.50/m!](#)

**Follow me
on Twitter!**

@ConvertingColor