

Converting Colors

XYZ(61.2849, 58.8209, 46.4451)

Have a look what the booklet for
XYZ(61.2849, 58.8209, 46.4451)
contains.

XYZ(61.1254, 58.6441, 46.6259)	3
<i>Conversions</i>	4
<i>Details</i>	6
<i>Harmonies</i>	12
<i>Previews</i>	24
<i>Color Blindness Simulation</i>	28
<i>CSS Examples</i>	31

Color

**XYZ(61.1254, 58.6441,
46.6259)**

Conversions

Conversions Part 1

Format	Color
Hex	EDC0AB
RGB	237, 192, 171
RGB Percent	93%, 75%, 67%
CMY	0.0706, 0.2470, 0.3294
CMYK	0.00, 0.19, 0.28, 0.07
HSL	19°, 65%, 80%
HSV	19°, 28%, 93%
XYZ	61.1254, 58.6441, 46.6259
YIQ	203.0610, 33.5610, 3.0090

Conversions

Conversions Part 2

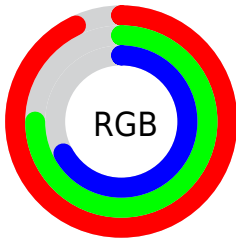
Format	Color
R_{YB}	237, 202, 171
Decimal	15581355
CIE _{Lab}	81.10, 13.07, 16.66
CIE _{LCh}	81, 21.172, 51.887
Yxy	58.6441, 0.3674, 0.3524
Android (android.graphics.Color)	4293771435 (0xFFEDC0AB)
YUV	203.0610, -15.8061, 29.7645
Hunter-Lab	76.5794, 8.4640, 17.5065

Details

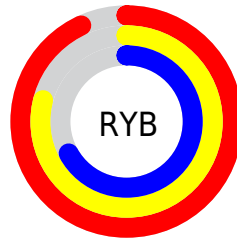
The XYZ color **61.1254, 58.6441, 46.6259** is a light color, and the websafe version is hex **FFCCCC**. A complement of this color would be **56.6359, 63.8822, 89.4665**, and the grayscale version is **56.8858, 59.8482, 65.1747**.

A 20% lighter version of the original color is **88.5349, 93.8858, 85.4070**, and **31.2406, 29.2122, 21.4447** is the 20% darker color. If you saturate the color by 10%, you get **55.7110, 51.1120, 34.6573**, and if you desaturate by 10%, it is **67.3375, 67.1227, 60.8600**.

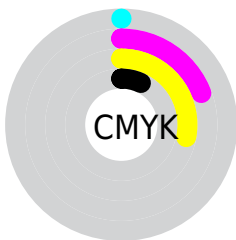
Distribution



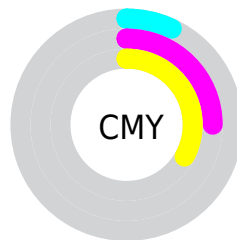
- Red (93%)
- Green (75%)
- Blue (67%)



- Red (93%)
- Yellow (79%)
- Blue (67%)



- Cyan (0%)
- Magenta (19%)
- Yellow (28%)
- Black (7%)





- Cyan (7%)
- Magenta (25%)
- Yellow (33%)

Brightness & Saturation Gradients


These gradients show how the XYZ color 61.1254, 58.6441, 46.6259 changes by changing the brightness by 10 percent. The first figure shows a shift by +10% for each color and the second figure -10%.

Similar to the brightness gradients but the following saturation gradients show a change of the XYZ color 61.1254, 58.6441, 46.6259 by changing the saturation by 10% instead.


 61.1254, 58.6441,
46.6259

 61.1254, 58.6441,
46.6259

418.5022,
419.5817, 389.6697

 44.5793, 42.3267,
32.3878


 105.5576,
102.8602, 86.4991

 31.3261, 29.3572,
21.3906


134.1744,
131.5277, 112.9712

 21.0003, 19.3512,
13.2158


167.5454,
165.0807, 144.3584

 13.2367, 11.9243,
7.4448

206.0361,
203.9036, 181.0793

 7.6699, 6.6922,
3.6592

250.0118,
248.3807, 223.5523

 3.9344, 3.2703,
1.4403

299.8378,

 1.6651, 1.2744,

298.8965, 272.1960

0.1729

355.8795,
355.8354, 327.4290

■ 0.4343, 0.1213,
0.0000

■ 0.0000, 0.0000,
0.0000

■ 61.1254, 58.6441,
46.6259

■ 61.1254, 58.6441,
46.6259

■ 55.7110, 51.1120,
34.6573

■ 67.3375, 67.1227,
60.8600

■ 51.0554, 44.4844,
24.8324

■ 74.3746, 76.5715,
77.4654

■ 47.1234, 38.7283,
17.0233

■ 82.2685, 87.0236,
96.5457

■ 43.8748, 33.8053,
11.0869

■ 88.7352, 96.7446,
108.6045

■ 41.2647, 29.6738,
6.8611

■ 39.2422, 26.2878,
4.1553

■ 37.7422, 23.5939,
2.7113

■ 37.4703, 23.0948,
2.4828

Harmonies

Analogous

The Analogous color harmony consists of three colors that are next to each other on the color wheel.



63.9632, 58.6441, 55.2415



61.1254, 58.6441, 46.6259



56.9419, 58.6441, 42.7468

Triad

The Triadic color harmony groups three colors that are evenly spaced from another and form a triangle on the color wheel.



61.1254, 58.6441, 46.6259



47.7773, 58.6441, 60.4950



58.9527, 58.6441, 89.0754

Complementary

The Complementary color scheme is a pair of colors which are on the opposite of each other on the color wheel.



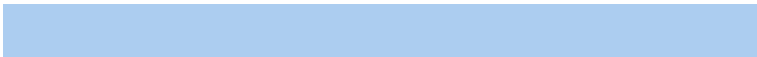
61.1254, 58.6441, 46.6259



56.6359, 63.8822, 89.4665

Split Complementary

Split-complementary colors differ from the complementary color scheme. The scheme consists of three colors, the original color and two neighbors of the complement color.



54.5541, 58.6441, 90.9659



61.1254, 58.6441, 46.6259



48.2526, 58.6441, 73.3169

Square

The Square scheme is like the rectangle color scheme, but the four colors are evenly spaced on the color wheel.



61.1254, 58.6441, 46.6259



49.3452, 58.6441, 50.0371



50.6796, 58.6441, 84.8744



62.6636, 58.6441, 80.0042

Rectangle

The Rectangle color scheme consists of four colors that form a rectangle on the color wheel.



61.1254, 58.6441, 46.6259



54.0151, 58.6441, 42.9592



50.6796, 58.6441, 84.8744



57.5001, 58.6441, 90.6157

Sweetspot

The Sweet Spot groups the original color and five complimentary colors.



61.1269, 58.6468, 46.6271



87.6603, 90.2004, 91.0848



61.8961, 52.0941, 71.8269



18.4812, 18.9305, 18.8242



0.0000, 0.0000, 0.0000



20.3446, 21.4041, 23.3091

Same Dimension

The Same Dimension uses a secret algorithm to generate beautiful new colors.



61.1269, 58.6468, 46.6271



68.6863, 64.4143, 47.2662



69.1743, 74.7416, 49.3096



15.4567, 15.8365, 15.7608



20.5617, 12.8177, 1.3903



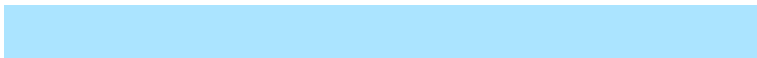
1.6984, 1.1741, 0.1371

Inverse Universe

The Inverse Universe completely reimagines the original color for something new.



56.6359, 63.8822, 89.4665



62.6156, 71.4684, 105.1023



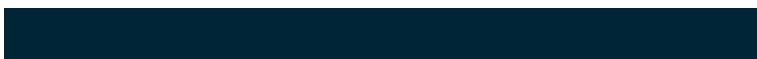
49.0354, 48.6814, 86.9330



15.0900, 16.2665, 19.2667



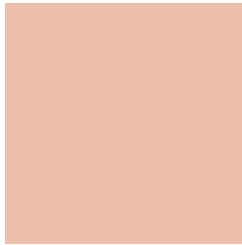
15.4821, 17.6111, 46.3263



1.3017, 1.5548, 3.6664

Previews

White Background



This preview shows how the XYZ color 61.1254, 58.6441, 46.6259 looks on a white background.

Color Contrast Check

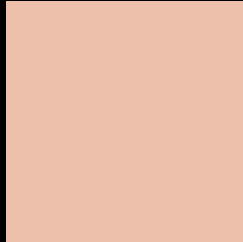
Large Text (above 18pt) WCAG AA × Fail

Any Text WCAG AA × Fail

Large Text (above 18pt) WCAG AAA × Fail

Any Text WCAG AAA × Fail

Black Background



This preview shows how the XYZ color 61.1254, 58.6441, 46.6259 looks on a black background.

Color Contrast Check

Large Text (above 18pt) WCAG AA ✓ Pass

Any Text WCAG AA ✓ Pass

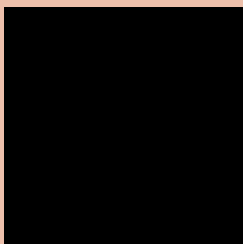
Large Text (above 18pt) WCAG AAA ✓ Pass

Any Text WCAG AAA ✓ Pass

If you want to check with other color combinations, try the [Color Contrast Checker](#).

XYZ 61.1254, 58.6441, 46.6259

Background



This preview shows how black text looks on a background with the XYZ color 61.1254, 58.6441, 46.6259.



This preview shows how white text looks on a background with the XYZ color 61.1254, 58.6441,

Color Blindness Simulation

Color vision deficiency is a very complex topic, and I could not describe the different causes any better than Wikipedia does, so if you want to learn more, you should check out their [article about color blindness](#).

Dichromacy



Original Color

61.1254, 58.6441, 46.6259

Protanopia

55.5871, 58.7568, 49.4857

Deuteranopia

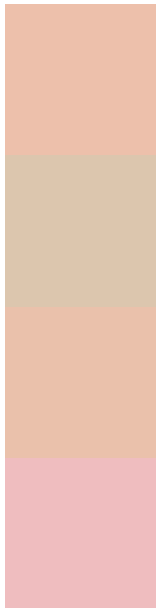
59.9212, 58.6797, 46.6962



Tritanopia

64.3662, 58.3302, 63.7435

Trichromacy



Original Color

61.1254, 58.6441, 46.6259

Protanomaly

57.3493, 58.6598, 48.3442

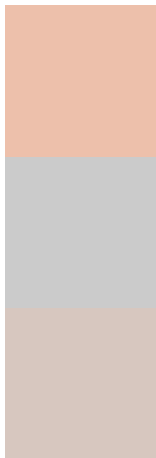
Deuteranomaly

60.3523, 58.5726, 46.6528

Tritanomaly

63.1982, 58.5075, 57.2524

Monochromacy



Original Color

61.1254, 58.6441, 46.6259

Achromatopsia

56.7640, 59.7202, 65.0353

Achromatomaly

57.8517, 59.0555, 57.6400

CSS Examples

Text

The CSS property to change the color of the text to XYZ 61.1254, 58.6441, 46.6259 is called "color". The color property can be set on classes, ids or directly on the HTML element.

This example shows how text in the color `rgb(237, 192, 171)` looks like.

```
.text, #text, p{  
    color:rgb(237, 192, 171)  
}
```

If you want to add a text shadow in that color use the text-shadow property, you can generate a text shadow directly with our [CSS Text Shadow Generator](#).

Here you see how black text with a 4 pixel rgb(237, 192, 171) colored shadow looks like.

```
.shadow{ text-shadow: 4px 4px 2px rgb(237, 192, 171) }
```

Border

The CSS property to change the border of an element to XYZ 61.1254, 58.6441, 46.6259 is called "border". The border property can be set on classes, ids or directly on the HTML element.

This example shows the color as border, it can be applied via the CSS property "border" or "border-color".

```
.border, #border, table{ border:4px solid rgb(237, 192, 171) }
```


If only the border color should be changed use the property border-color.

```
.border{ border-color:rgb(237, 192, 171) }
```

If you want to add a box shadow in that color use:

Here you see how a box with a 4 pixel rgb(237, 192, 171) colored shadow looks like.

```
.boxshadow{ -moz-box-shadow:4px 4px 4px  
4px rgb(237, 192, 171); -webkit-box-  
shadow:4px 4px 4px 4px rgb(237, 192, 171);  
box-shadow:4px 4px 4px 4px rgb(237, 192,  
171) }
```

Background

The CSS property to change the background color of an element to XYZ 61.1254, 58.6441, 46.6259 is called "background". The background property can be set on classes, ids or directly on the HTML element.

```
.background, #background, body{  
background: rgb(237, 192, 171) }
```

If only the background color should be changed can be used:

```
.background{ background-color: rgb(237,  
192, 171) }
```

This example shows the color as background, it is applied via the CSS property "background".

To optimize and compress your CSS code, you can use our [online CSS compressor and optimizer](#) based on csstidy. If you want to create a linear or radial gradient as background or border, check our [CSS Gradient Generator](#).

Hey! You found this booklet interesting? Support Converting Colors with the new Membership Option!

The pro membership hides all ads, plus gives you double the colors in the color bucket, and more awesome pro features!

[Learn more, Memberships starting at \\$2.50/m!](#)

**Follow me
on Twitter!**

@ConvertingColor