

Converting Colors

XYZ(61.3001, 63.0222, 60.5697)

Have a look what the booklet for
XYZ(61.3001, 63.0222, 60.5697)
contains.

XYZ(61.1968, 62.8184, 60.5295)	3
<i>Conversions</i>	4
<i>Details</i>	6
<i>Harmonies</i>	12
<i>Previews</i>	24
<i>Color Blindness Simulation</i>	28
<i>CSS Examples</i>	31

Color

**XYZ(61.1968, 62.8184,
60.5295)**

Conversions

Conversions Part 1

Format	Color
Hex	DCCDC3
RGB	220, 205, 195
RGB Percent	86%, 80%, 76%
CMY	0.1373, 0.1961, 0.2353
CMYK	0.00, 0.07, 0.11, 0.14
HSL	24°, 26%, 81%
HSV	24°, 11%, 86%
XYZ	61.1968, 62.8184, 60.5295
YIQ	208.3450, 12.1500, 0.0700

Conversions

Conversions Part 2

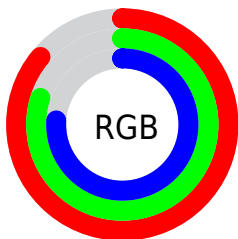
Format	Color
R _Y B	220, 212, 195
Decimal	14470595
CIE Lab	83.35, 3.53, 6.84
CIE LCh	83, 7.697, 62.680
Yxy	62.8184, 0.3316, 0.3404
Android (android.graphics.Color)	4292660675 (0xFFDCCDC3)
YUV	208.3450, -6.5791, 10.2214
Hunter-Lab	79.2581, -0.8780, 10.2008

Details

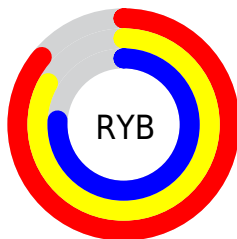
The XYZ color **61.1968, 62.8184, 60.5295** is a light color, and the websafe version is hex **CCCCCC**. A complement of this color would be **58.4703, 62.8613, 76.7624**, and the grayscale version is **60.2153, 63.3512, 68.9895**.

A 20% lighter version of the original color is **94.5707, 99.8083, 106.3760**, and **31.3914, 32.0556, 29.7322** is the 20% darker color. If you saturate the color by 10%, you get **55.8661, 55.8484, 47.3712**, and if you desaturate by 10%, it is **67.1638, 70.4731, 75.7095**.

Distribution



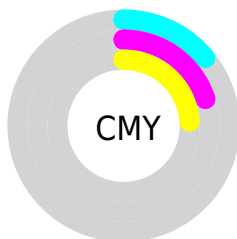
- Red (86%)
- Green (80%)
- Blue (76%)



- Red (86%)
- Yellow (83%)
- Blue (76%)



- Cyan (0%)
- Magenta (7%)
- Yellow (11%)
- Black (14%)



- Cyan (14%)
- Magenta (20%)
- Yellow (24%)

Brightness & Saturation Gradients

These gradients show how the XYZ color 61.1968, 62.8184, 60.5295 changes by changing the brightness by 10 percent. The first figure shows a shift by +10% for each color and the second figure -10%.

Similar to the brightness gradients but the following saturation gradients show a change of the XYZ color 61.1968, 62.8184, 60.5295 by changing the saturation by 10% instead.

61.1968, 62.8184,
60.5295

61.1968, 62.8184,
60.5295

418.7596,
434.9101, 444.4055

44.6372, 45.6943,
43.4175

105.6603,
108.9075, 107.1483

31.3718, 32.0047,
29.8790

134.2949,
138.6413, 137.4921

21.0353, 21.3651,
19.4955

167.6852,
173.3470, 173.0836

13.2624, 13.3911,
11.8484

206.1966,
213.4093, 214.3414

7.6878, 7.6984,
6.5193

250.1943,
259.2123, 261.6839

3.9459, 3.9026,
3.0895

300.0439,

1.6716, 1.6192,

311.1405, 315.5297

1.1405

356.1105,
369.5783, 376.2974

■ 0.4384, 0.3705,
0.0000

■ 0.0000, 0.0000,
0.0000

■ 61.1968, 62.8184,
60.5295

■ 61.1968, 62.8184,
60.5295

■ 55.8661, 55.8484,
47.3712

■ 67.1638, 70.4731,
75.7095

■ 51.1440, 49.5353,
36.1444

■ 73.7831, 78.8228,
92.9882

■ 47.0083, 43.8614,
26.7578

■ 80.0953, 87.4955,
107.2746

■ 43.4333, 38.8052,
19.1112

■ 83.3254, 93.9558,
108.3513

■ 40.3912, 34.3437,
13.0947

■ 37.8514, 30.4522,
8.5857

■ 35.7797, 27.1039,
5.4437

■ 34.1361, 24.2690,
3.5013

■ 33.0082, 22.2013,
2.5456

Harmonies

Analogous

The Analogous color harmony consists of three colors that are next to each other on the color wheel.



62.4580, 62.8184, 63.5399



61.1968, 62.8184, 60.5295



59.5566, 62.8184, 59.5957

Triad

The Triadic color harmony groups three colors that are evenly spaced from another and form a triangle on the color wheel.



61.1968, 62.8184, 60.5295



56.5485, 62.8184, 68.8306



61.4622, 62.8184, 76.4564

Complementary

The Complementary color scheme is a pair of colors which are on the opposite of each other on the color wheel.



61.1968, 62.8184, 60.5295



58.4703, 62.8613, 76.7624

Split Complementary

Split-complementary colors differ from the complementary color scheme. The scheme consists of three colors, the original color and two neighbors of the complement color.



59.8577, 62.8184, 78.0282



61.1968, 62.8184, 60.5295



57.0380, 62.8184, 73.4987

Square

The Square scheme is like the rectangle color scheme, but the four colors are evenly spaced on the color wheel.



61.1968, 62.8184, 60.5295



56.8921, 62.8184, 64.2536



58.2416, 62.8184, 76.9217



62.6132, 62.8184, 72.7181

Rectangle

The Rectangle color scheme consists of four colors that form a rectangle on the color wheel.



61.1968, 62.8184, 60.5295



58.4742, 62.8184, 60.2392



58.2416, 62.8184, 76.9217



60.9570, 62.8184, 77.2633

Sweetspot

The Sweet Spot groups the original color and five complimentary colors.



61.1985, 62.8212, 60.5308



92.3961, 96.6241, 102.0597



60.6639, 58.8998, 69.1449



19.6278, 20.4916, 21.4634



0.0000, 0.0000, 0.0000



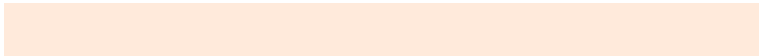
20.3446, 21.4041, 23.3091

Same Dimension

The Same Dimension uses a secret algorithm to generate beautiful new colors.



61.1985, 62.8212, 60.5308



83.3708, 85.0004, 79.2377



64.3081, 69.0403, 61.5674



13.4815, 13.9024, 13.6985



19.4743, 13.2342, 1.5280



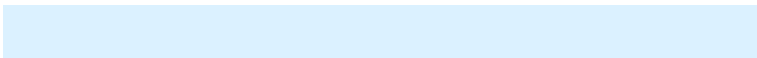
1.3445, 1.0232, 0.1266

Inverse Universe

The Inverse Universe completely reimagines the original color for something new.



58.4703, 62.8613, 76.7624



78.7245, 85.0681, 106.8783



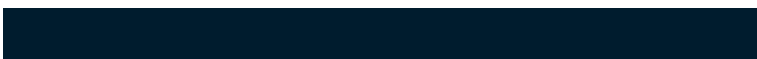
55.5047, 56.9303, 75.7739



12.9850, 13.9098, 16.6526



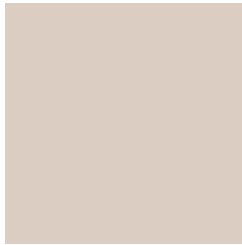
12.5330, 12.9355, 41.5746



0.8954, 1.0050, 2.7212

Previews

White Background



This preview shows how the XYZ color 61.1968, 62.8184, 60.5295 looks on a white background.

Color Contrast Check

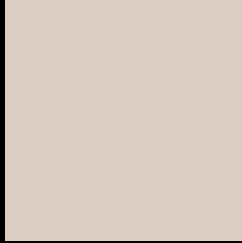
Large Text (above 18pt) WCAG AA × Fail

Any Text WCAG AA × Fail

Large Text (above 18pt) WCAG AAA × Fail

Any Text WCAG AAA × Fail

Black Background



This preview shows how the XYZ color 61.1968, 62.8184, 60.5295 looks on a black background.

Color Contrast Check

Large Text (above 18pt) WCAG AA ✓ Pass

Any Text WCAG AA ✓ Pass

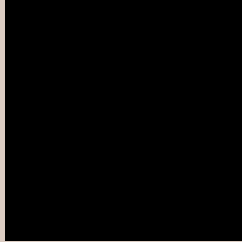
Large Text (above 18pt) WCAG AAA ✓ Pass

Any Text WCAG AAA ✓ Pass

If you want to check with other color combinations, try the [Color Contrast Checker](#).

XYZ 61.1968, 62.8184, 60.5295

Background



This preview shows how black text looks on a background with the XYZ color 61.1968, 62.8184, 60.5295.

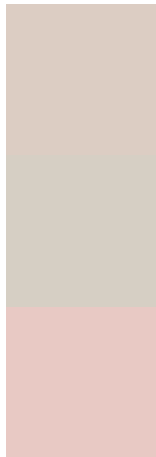


This preview shows how white text looks on a background with the XYZ color 61.1968, 62.8184,

Color Blindness Simulation

Color vision deficiency is a very complex topic, and I could not describe the different causes any better than Wikipedia does, so if you want to learn more, you should check out their [article about color blindness](#).

Dichromacy



Original Color

61.1968, 62.8184, 60.5295

Protanopia

60.0082, 62.9073, 61.2041

Deuteranopia

64.1292, 62.9146, 60.9883



Tritanopia

64.0763, 62.9388, 74.4169

Trichromacy



Original Color

61.1968, 62.8184, 60.5295

Protanomaly

60.3540, 62.7271, 61.1511

Deuteranomaly

63.0792, 62.7206, 61.0062

Tritanomaly

62.9888, 62.8449, 69.1320

Monochromacy



Original Color

61.1968, 62.8184, 60.5295

Achromatopsia

59.9535, 63.0757, 68.6895

Achromatomaly

60.2437, 62.9345, 65.4723

CSS Examples

Text

The CSS property to change the color of the text to XYZ 61.1968, 62.8184, 60.5295 is called "color". The color property can be set on classes, ids or directly on the HTML element.

This example shows how text in the color rgb(220, 205, 195) looks like.

```
.text, #text, p{  
    color:rgb(220, 205, 195)  
}
```

If you want to add a text shadow in that color use the text-shadow property, you can generate a text shadow directly with our [CSS Text Shadow Generator](#).

Here you see how black text with a 4 pixel rgb(220, 205, 195) colored shadow looks like.

```
.shadow{ text-shadow: 4px 4px 2px rgb(220, 205, 195) }
```

Border

The CSS property to change the border of an element to XYZ 61.1968, 62.8184, 60.5295 is called "border". The border property can be set on classes, ids or directly on the HTML element.

This example shows the color as border, it can be applied via the CSS property "border" or "border-color".

```
.border, #border, table{ border:4px solid rgb(220, 205, 195) }
```


If only the border color should be changed use the property `border-color`.

```
.border{ border-color:rgb(220, 205, 195) }
```

If you want to add a box shadow in that color use:

Here you see how a box with a 4 pixel `rgb(220, 205, 195)` colored shadow looks like.

```
.boxshadow{ -moz-box-shadow:4px 4px 4px  
4px rgb(220, 205, 195); -webkit-box-  
shadow:4px 4px 4px 4px rgb(220, 205, 195);  
box-shadow:4px 4px 4px 4px rgb(220, 205,  
195) }
```

Background

The CSS property to change the background color of an element to XYZ 61.1968, 62.8184, 60.5295 is called "background". The background property can be set on classes, ids or directly on the HTML element.

```
.background, #background, body{  
background: rgb(220, 205, 195) }
```

If only the background color should be changed can be used:

```
.background{ background-color: rgb(220,  
205, 195) }
```

This example shows the color as background, it is applied via the CSS property "background".

To optimize and compress your CSS code, you can use our [online CSS compressor and optimizer](#) based on csstidy. If you want to create a linear or radial gradient as background or border, check our [CSS Gradient Generator](#).

Hey! You found this booklet interesting? Support Converting Colors with the new Membership Option!

The pro membership hides all ads, plus gives you double the colors in the color bucket, and more awesome pro features!

[Learn more, Memberships starting at \\$2.50/m!](#)

**Follow me
on Twitter!**

@ConvertingColor