

Converting Colors

XYZ(61.3264, 60.0636, 62.3940)

Have a look what the booklet for
XYZ(61.3264, 60.0636, 62.3940)
contains.

XYZ(61.3264, 60.0636, 62.3940)	3
<i>Conversions</i>	4
<i>Details</i>	6
<i>Harmonies</i>	12
<i>Previews</i>	24
<i>Color Blindness Simulation</i>	28
<i>CSS Examples</i>	31

Color

**XYZ(61.3264, 60.0636,
62.3940)**

Conversions

Conversions Part 1

Format	Color
Hex	E1C5C7
RGB	225, 197, 199
RGB Percent	88%, 77%, 78%
CMY	0.1176, 0.2274, 0.2196
CMYK	0.00, 0.12, 0.12, 0.12
HSL	356°, 32%, 83%
HSV	356°, 12%, 88%
XYZ	61.3264, 60.0636, 62.3940
YIQ	205.6000, 16.0460, 6.5580

Conversions

Conversions Part 2

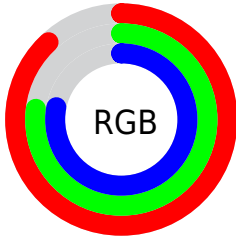
Format	Color
R _Y B	225, 197, 199
Decimal	14796231
CIE Lab	81.87, 10.19, 2.63
CIE LCh	82, 10.523, 14.446
Yxy	60.0636, 0.3337, 0.3268
Android (android.graphics.Color)	4292986311 (0xFFE1C5C7)
YUV	205.6000, -3.2538, 17.0138
Hunter-Lab	77.5007, 5.6210, 6.5175

Details

The XYZ color **61.3264, 60.0636, 62.3940** is a light color, and the websafe version is hex **FFCCCC**. A complement of this color would be **63.2728, 71.0500, 80.1948**, and the grayscale version is **58.4249, 61.4676, 66.9382**.

A 20% lighter version of the original color is **94.7318, 99.3636, 108.7939**, and **31.5109, 30.2353, 30.9633** is the 20% darker color. If you saturate the color by 10%, you get **54.3320, 49.6940, 48.9033**, and if you desaturate by 10%, it is **69.4199, 72.0968, 77.8961**.

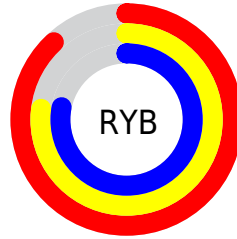
Distribution



Red (88%)

Green (77%)

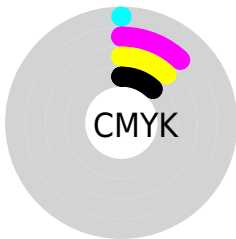
Blue (78%)



Red (88%)

Yellow (77%)

Blue (78%)

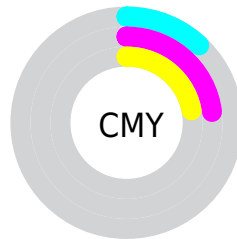


Cyan (0%)

Magenta (12%)

Yellow (12%)

Black (12%)



Cyan (12%)

Magenta (23%)

Yellow (22%)

Brightness & Saturation Gradients

These gradients show how the XYZ color 61.3264, 60.0636, 62.3940 changes by changing the brightness by 10 percent. The first figure shows a shift by +10% for each color and the second figure -10%.

Similar to the brightness gradients but the following saturation gradients show a change of the XYZ color 61.3264, 60.0636, 62.3940 by changing the saturation by 10% instead.

61.3264, 60.0636,
62.3940

61.3264, 60.0636,
62.3940

419.2266,
424.8322, 451.4141

44.7422, 43.4699,
44.9133

105.8468,
104.9219, 109.8719

31.4548, 30.2540,
31.0467

134.5138,
133.9553, 140.7061

21.0989, 20.0314,
20.3756

167.9390,
167.9041, 176.8287

13.3092, 12.4179,
12.4816

206.4878,
207.1526, 218.6580

7.7203, 7.0290,
6.9461

250.5256,
252.0853, 266.6126

3.9668, 3.4802,
3.3505

300.4178,

1.6834, 1.3873,

303.0865, 321.1112

1.2762

356.5297,
360.5407, 382.5722

■ 0.4458, 0.2073,
0.0422

■ 0.0000, 0.0000,
0.0000

■ 61.3264, 60.0636,
62.3940

■ 61.3264, 60.0636,
62.3940

■ 54.3320, 49.6940,
48.9033

■ 69.4199, 72.0968,
77.8961

■ 48.3844, 40.9074,
37.3379

■ 78.6518, 85.8538,
95.4834

■ 43.4348, 33.6281,
27.6111

■ 84.8616, 94.7477,
108.4232

■ 39.4284, 27.7716,
19.6282

■ 36.3052, 23.2446,
13.2860

■ 33.9980, 19.9429,
8.4701

■ 32.4302, 17.7467,
5.0518

■ 31.5106, 16.5121,
2.8810

■ 31.1455, 16.0452,
1.9473

Harmonies

Analogous

The Analogous color harmony consists of three colors that are next to each other on the color wheel.



61.3040, 60.0636, 68.7349



61.3264, 60.0636, 62.3940



60.1932, 60.0636, 57.2003

Triad

The Triadic color harmony groups three colors that are evenly spaced from another and form a triangle on the color wheel.



61.3264, 60.0636, 62.3940



54.1491, 60.0636, 57.0475



55.9508, 60.0636, 77.9082

Complementary

The Complementary color scheme is a pair of colors which are on the opposite of each other on the color wheel.



61.3264, 60.0636, 62.3940



63.2728, 71.0500, 80.1948

Split Complementary

Split-complementary colors differ from the complementary color scheme. The scheme consists of three colors, the original color and two neighbors of the complement color.



54.0928, 60.0636, 74.3460



61.3264, 60.0636, 62.3940



53.0711, 60.0636, 62.1729

Square

The Square scheme is like the rectangle color scheme, but the four colors are evenly spaced on the color wheel.



61.3264, 60.0636, 62.3940



56.0295, 60.0636, 54.2520



53.0508, 60.0636, 68.4991



58.1611, 60.0636, 77.9770

Rectangle

The Rectangle color scheme consists of four colors that form a rectangle on the color wheel.



61.3264, 60.0636, 62.3940



58.9513, 60.0636, 54.9703



53.0508, 60.0636, 68.4991



55.2656, 60.0636, 77.0698

Sweetspot

The Sweet Spot groups the original color and five complimentary colors.



61.3281, 60.0663, 62.3953



90.3940, 93.0687, 100.0086



63.8874, 61.0066, 79.6430



19.1665, 19.6504, 21.0588



0.0000, 0.0000, 0.0000



20.3446, 21.4041, 23.3091

Same Dimension

The Same Dimension uses a secret algorithm to generate beautiful new colors.



61.3281, 60.0663, 62.3953



78.8375, 75.8966, 77.8419



63.8499, 65.4784, 62.1000



13.7467, 13.7163, 14.4362



17.9629, 9.2522, 1.2046



1.2592, 0.6469, 0.1577

Inverse Universe

The Inverse Universe completely reimagines the original color for something new.



61.3281, 60.0663, 62.3953



78.8375, 75.8966, 77.8419



60.4970, 65.0651, 80.6051



13.7467, 13.7163, 14.4362



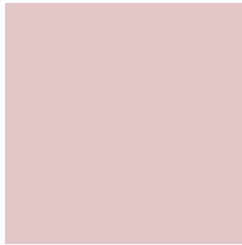
17.9629, 9.2522, 1.2046



1.2592, 0.6469, 0.1577

Previews

White Background



This preview shows how the XYZ color 61.3264, 60.0636, 62.3940 looks on a white background.

Color Contrast Check

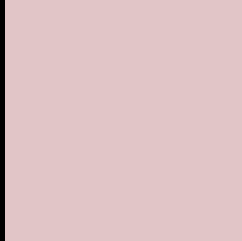
Large Text (above 18pt) WCAG AA × Fail

Any Text WCAG AA × Fail

Large Text (above 18pt) WCAG AAA × Fail

Any Text WCAG AAA × Fail

Black Background



This preview shows how the XYZ color 61.3264, 60.0636, 62.3940 looks on a black background.

Color Contrast Check

Large Text (above 18pt) WCAG AA ✓ Pass

Any Text WCAG AA ✓ Pass

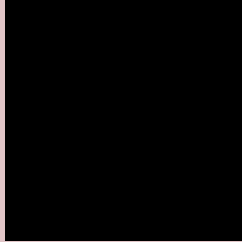
Large Text (above 18pt) WCAG AAA ✓ Pass

Any Text WCAG AAA ✓ Pass

If you want to check with other color combinations, try the [Color Contrast Checker](#).

XYZ 61.3264, 60.0636, 62.3940

Background



This preview shows how black text looks on a background with the XYZ color 61.3264, 60.0636, 62.3940.



This preview shows how white text looks on a background with the XYZ color 61.3264, 60.0636,

Color Blindness Simulation

Color vision deficiency is a very complex topic, and I could not describe the different causes any better than Wikipedia does, so if you want to learn more, you should check out their [article about color blindness](#).

Dichromacy



Original Color

61.3264, 60.0636, 62.3940

Protanopia

58.0290, 60.3860, 64.4743

Deuteranopia

61.3264, 60.0636, 62.3940



Tritanopia

62.8265, 60.0143, 69.2454

Trichromacy



Original Color

61.3264, 60.0636, 62.3940

Protanomaly

59.1608, 60.2865, 63.7767

Deuteranomaly

61.3264, 60.0636, 62.3940

Tritanomaly

62.2445, 60.1048, 66.7133

Monochromacy



Original Color

61.3264, 60.0636, 62.3940

Achromatopsia

58.6655, 61.7207, 67.2138

Achromatomaly

59.5760, 61.1698, 65.1669

CSS Examples

Text

The CSS property to change the color of the text to XYZ 61.3264, 60.0636, 62.3940 is called "color". The color property can be set on classes, ids or directly on the HTML element.

This example shows how text in the color `rgb(225, 197, 199)` looks like.

```
.text, #text, p{  
    color:rgb(225, 197, 199)  
}
```

If you want to add a text shadow in that color use the text-shadow property, you can generate a text shadow directly with our [CSS Text Shadow Generator](#).

Here you see how black text with a 4 pixel rgb(225, 197, 199) colored shadow looks like.

```
.shadow{ text-shadow: 4px 4px 2px rgb(225, 197, 199) }
```

Border

The CSS property to change the border of an element to XYZ 61.3264, 60.0636, 62.3940 is called "border". The border property can be set on classes, ids or directly on the HTML element.

This example shows the color as border, it can be applied via the CSS property "border" or "border-color".

```
.border, #border, table{ border:4px solid rgb(225, 197, 199) }
```


If only the border color should be changed use the property `border-color`.

```
.border{ border-color:rgb(225, 197, 199) }
```

If you want to add a box shadow in that color use:

Here you see how a box with a 4 pixel `rgb(225, 197, 199)` colored shadow looks like.

```
.boxshadow{ -moz-box-shadow:4px 4px 4px  
4px rgb(225, 197, 199); -webkit-box-  
shadow:4px 4px 4px 4px rgb(225, 197, 199);  
box-shadow:4px 4px 4px 4px rgb(225, 197,  
199) }
```

Background

The CSS property to change the background color of an element to XYZ 61.3264, 60.0636, 62.3940 is called "background". The background property can be set on classes, ids or directly on the HTML element.

```
.background, #background, body{  
background: rgb(225, 197, 199) }
```

If only the background color should be changed can be used:

```
.background{ background-color: rgb(225,  
197, 199) }
```

This example shows the color as background, it is applied via the CSS property "background".

To optimize and compress your CSS code, you can use our [online CSS compressor and optimizer](#) based on csstidy. If you want to create a linear or radial gradient as background or border, check our [CSS Gradient Generator](#).

Hey! You found this booklet interesting? Support Converting Colors with the new Membership Option!

The pro membership hides all ads, plus gives you double the colors in the color bucket, and more awesome pro features!

[Learn more, Memberships starting at \\$2.50/m!](#)

**Follow me
on Twitter!**

@ConvertingColor