

Converting Colors

XYZ(61.3514, 61.0255, 53.4558)

Have a look what the booklet for
XYZ(61.3514, 61.0255, 53.4558)
contains.

XYZ(61.2838, 60.9238, 53.3292)	3
<i>Conversions</i>	4
<i>Details</i>	6
<i>Harmonies</i>	12
<i>Previews</i>	24
<i>Color Blindness Simulation</i>	28
<i>CSS Examples</i>	31

Color

**XYZ(61.2838, 60.9238,
53.3292)**

Conversions

Conversions Part 1

Format	Color
Hex	E5C7B7
RGB	229, 199, 183
RGB Percent	90%, 78%, 72%
CMY	0.1020, 0.2196, 0.2823
CMYK	0.00, 0.13, 0.20, 0.10
HSL	21°, 47%, 81%
HSV	21°, 20%, 90%
XYZ	61.2838, 60.9238, 53.3292
YIQ	206.1460, 23.0160, 1.3840

Conversions

Conversions Part 2

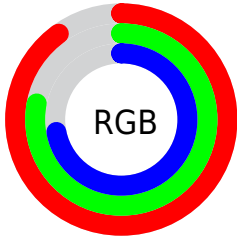
Format	Color
R _Y B	229, 208, 183
Decimal	15058871
CIE Lab	82.34, 8.09, 11.90
CIE LCh	82, 14.384, 55.796
Yxy	60.9238, 0.3491, 0.3471
Android (android.graphics.Color)	4293248951 (0xFFE5C7B7)
YUV	206.1460, -11.4110, 20.0430
Hunter-Lab	78.0537, 3.5552, 14.1284

Details

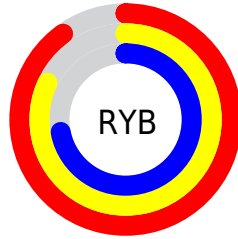
The XYZ color **61.2838, 60.9238, 53.3292** is a light color, and the websafe version is hex **FFCCCC**. A complement of this color would be **57.4651, 63.3114, 83.3208**, and the grayscale version is **58.8216, 61.8849, 67.3926**.

A 20% lighter version of the original color is **92.5800, 99.0120, 95.8931**, and **31.3882, 30.7467, 25.3995** is the 20% darker color. If you saturate the color by 10%, you get **55.8230, 53.5111, 40.6907**, and if you desaturate by 10%, it is **67.4729, 69.1715, 68.1251**.

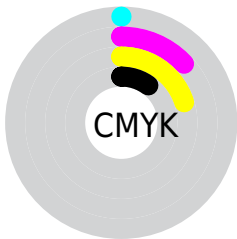
Distribution



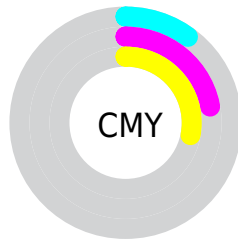
- Red (90%)
- Green (78%)
- Blue (72%)



- Red (90%)
- Yellow (82%)
- Blue (72%)



- Cyan (0%)
- Magenta (13%)
- Yellow (20%)
- Black (10%)





- Cyan (10%)
- Magenta (22%)
- Yellow (28%)

Brightness & Saturation Gradients


These gradients show how the XYZ color 61.2838, 60.9238, 53.3292 changes by changing the brightness by 10 percent. The first figure shows a shift by +10% for each color and the second figure -10%.


Similar to the brightness gradients but the following saturation gradients show a change of the XYZ color 61.2838, 60.9238, 53.3292 by changing the saturation by 10% instead.

 61.2838, 60.9238,
53.3292

 61.2838, 60.9238,
53.3292


419.0731,
427.9946, 416.6489

 44.7077, 44.1637,
37.6761


 105.7855,
106.1686, 96.5351

 31.4275, 30.7992,
25.4315


134.4418,
135.4221, 124.9249

 21.0780, 20.4460,
16.1769


167.8556,
169.6088, 158.3974

 13.2938, 12.7197,
9.4937

206.3921,
209.1131, 197.3711

 7.7096, 7.2358,
4.9634

250.4167,
254.3194, 242.2646

 3.9599, 3.6100,
2.1674

300.2949,

 1.6795, 1.4579,

305.6122, 293.4964

0.6555

356.3919,
363.3758, 351.4850

■ 0.4434, 0.2588,
0.0000

■ 0.0000, 0.0000,
0.0000

■ 61.2838, 60.9238,
53.3292

■ 61.2838, 60.9238,
53.3292

■ 55.8230, 53.5111,
40.6907

■ 67.4729, 69.1715,
68.1251

■ 51.0573, 46.8983,
30.1040

■ 74.4121, 78.2714,
85.1696

■ 46.9577, 41.0598,
21.4601

■ 82.1283, 88.2506,
104.5533

■ 43.4915, 35.9655,
14.6383

■ 86.1233, 95.3981,
108.4822

■ 40.6227, 31.5830,
9.5045

■ 38.3111, 27.8772,
5.9054

■ 36.5103, 24.8094,
3.6594

■ 35.1582, 22.3479,
2.4605

Harmonies

Analogous

The Analogous color harmony consists of three colors that are next to each other on the color wheel.



63.3778, 60.9238, 59.2565



61.2838, 60.9238, 53.3292



58.3395, 60.9238, 50.8822

Triad

The Triadic color harmony groups three colors that are evenly spaced from another and form a triangle on the color wheel.



61.2838, 60.9238, 53.3292



52.2236, 60.9238, 65.1057



60.5097, 60.9238, 82.7273

Complementary

The Complementary color scheme is a pair of colors which are on the opposite of each other on the color wheel.



61.2838, 60.9238, 53.3292



57.4651, 63.3114, 83.3208

Split Complementary

Split-complementary colors differ from the complementary color scheme. The scheme consists of three colors, the original color and two neighbors of the complement color.



57.4752, 60.9238, 84.6385



61.2838, 60.9238, 53.3292



52.7590, 60.9238, 73.9574

Square

The Square scheme is like the rectangle color scheme, but the four colors are evenly spaced on the color wheel.



61.2838, 60.9238, 53.3292



53.1662, 60.9238, 57.2902



54.6551, 60.9238, 81.3016



62.9199, 60.9238, 76.2864

Rectangle

The Rectangle color scheme consists of four colors that form a rectangle on the color wheel.



61.2838, 60.9238, 53.3292



56.3163, 60.9238, 51.3799



54.6551, 60.9238, 81.3016



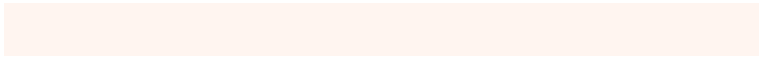
59.5259, 60.9238, 83.9438

Sweetspot

The Sweet Spot groups the original color and five complimentary colors.



61.2854, 60.9266, 53.3305



89.5831, 92.8523, 95.4054



61.3423, 55.3638, 70.8492



19.0517, 19.7129, 20.1201



0.0000, 0.0000, 0.0000



20.3446, 21.4041, 23.3091

Same Dimension

The Same Dimension uses a secret algorithm to generate beautiful new colors.



61.2854, 60.9266, 53.3305



75.2793, 73.7943, 61.1973



66.8055, 71.9666, 55.1705



14.7850, 15.1840, 15.0560



20.2033, 12.9808, 1.4407



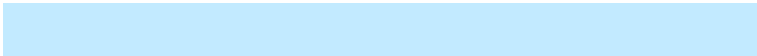
1.5774, 1.1282, 0.1346

Inverse Universe

The Inverse Universe completely reimagines the original color for something new.



57.4651, 63.3114, 83.3208



69.5863, 77.3419, 105.8686



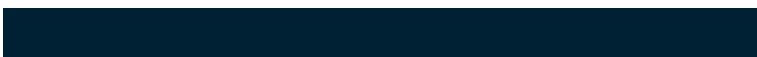
52.2302, 52.8416, 81.5758



14.3633, 15.4480, 18.3691



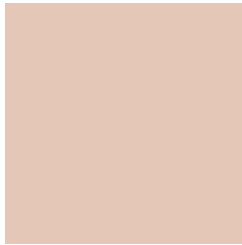
14.3773, 15.8167, 44.6783



1.1485, 1.3410, 3.3303

Previews

White Background



This preview shows how the XYZ color 61.2838, 60.9238, 53.3292 looks on a white background.

Color Contrast Check

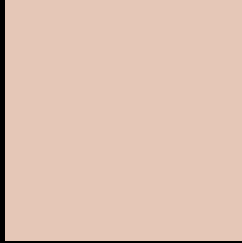
Large Text (above 18pt) WCAG AA × Fail

Any Text WCAG AA × Fail

Large Text (above 18pt) WCAG AAA × Fail

Any Text WCAG AAA × Fail

Black Background



This preview shows how the XYZ color 61.2838, 60.9238, 53.3292 looks on a black background.

Color Contrast Check

Large Text (above 18pt) WCAG AA ✓ Pass

Any Text WCAG AA ✓ Pass

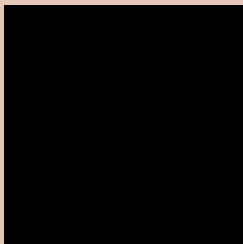
Large Text (above 18pt) WCAG AAA ✓ Pass

Any Text WCAG AAA ✓ Pass

If you want to check with other color combinations, try the [Color Contrast Checker](#).

XYZ 61.2838, 60.9238, 53.3292

Background



This preview shows how black text looks on a background with the XYZ color 61.2838, 60.9238, 53.3292.



This preview shows how white text looks on a background with the XYZ color 61.2838, 60.9238,

Color Blindness Simulation

Color vision deficiency is a very complex topic, and I could not describe the different causes any better than Wikipedia does, so if you want to learn more, you should check out their [article about color blindness](#).

Dichromacy



Original Color

61.2838, 60.9238, 53.3292

Protanopia

57.8964, 60.8770, 55.1534

Deuteranopia

62.3456, 61.1307, 53.3132



Tritanopia

64.4267, 60.8392, 69.3202

Trichromacy



Original Color

61.2838, 60.9238, 53.3292

Protanomaly

59.0909, 60.8039, 54.5208

Deuteranomaly

62.0200, 60.9629, 53.2979

Tritanomaly

63.1203, 60.6389, 63.0213

Monochromacy



Original Color

61.2838, 60.9238, 53.3292

Achromatopsia

58.6655, 61.7207, 67.2138

Achromatomaly

59.2805, 61.0852, 62.0923

CSS Examples

Text

The CSS property to change the color of the text to XYZ 61.2838, 60.9238, 53.3292 is called "color". The color property can be set on classes, ids or directly on the HTML element.

This example shows how text in the color `rgb(229, 199, 183)` looks like.

```
.text, #text, p{  
    color:rgb(229, 199, 183)  
}
```

If you want to add a text shadow in that color use the text-shadow property, you can generate a text shadow directly with our [CSS Text Shadow Generator](#).

Here you see how black text with a 4 pixel rgb(229, 199, 183) colored shadow looks like.

```
.shadow{ text-shadow: 4px 4px 2px rgb(229, 199, 183) }
```

Border

The CSS property to change the border of an element to XYZ 61.2838, 60.9238, 53.3292 is called "border". The border property can be set on classes, ids or directly on the HTML element.

This example shows the color as border, it can be applied via the CSS property "border" or "border-color".

```
.border, #border, table{ border:4px solid rgb(229, 199, 183) }
```


If only the border color should be changed use the property `border-color`.

```
.border{ border-color:rgb(229, 199, 183) }
```

If you want to add a box shadow in that color use:

Here you see how a box with a 4 pixel `rgb(229, 199, 183)` colored shadow looks like.

```
.boxshadow{ -moz-box-shadow:4px 4px 4px 4px rgb(229, 199, 183); -webkit-box-shadow:4px 4px 4px 4px rgb(229, 199, 183); box-shadow:4px 4px 4px 4px rgb(229, 199, 183) }
```

Background

The CSS property to change the background color of an element to XYZ 61.2838, 60.9238, 53.3292 is called "background". The background property can be set on classes, ids or directly on the HTML element.

```
.background, #background, body{  
background: rgb(229, 199, 183) }
```

If only the background color should be changed can be used:

```
.background{ background-color: rgb(229,  
199, 183) }
```

This example shows the color as background, it is applied via the CSS property "background".

To optimize and compress your CSS code, you can use our [online CSS compressor and optimizer](#) based on csstidy. If you want to create a linear or radial gradient as background or border, check our [CSS Gradient Generator](#).

Hey! You found this booklet interesting? Support Converting Colors with the new Membership Option!

The pro membership hides all ads, plus gives you double the colors in the color bucket, and more awesome pro features!

[Learn more, Memberships starting at \\$2.50/m!](#)

**Follow me
on Twitter!**

@ConvertingColor