

Converting Colors

XYZ(61.3587, 60.5144, 68.7673)

Have a look what the booklet for
XYZ(61.3587, 60.5144, 68.7673)
contains.

XYZ(61.4472, 60.6659, 68.7927)	3
<i>Conversions</i>	4
<i>Details</i>	6
<i>Harmonies</i>	12
<i>Previews</i>	24
<i>Color Blindness Simulation</i>	28
<i>CSS Examples</i>	31

Color

**XYZ(61.4472, 60.6659,
68.7927)**

Conversions

Conversions Part 1

Format	Color
Hex	DCC7D1
RGB	220, 199, 209
RGB Percent	86%, 78%, 82%
CMY	0.1373, 0.2196, 0.1804
CMYK	0.00, 0.10, 0.05, 0.14
HSL	331°, 23%, 82%
HSV	331°, 10%, 86%
XYZ	61.4472, 60.6659, 68.7927
YIQ	206.4190, 9.3060, 7.5620

Conversions

Conversions Part 2

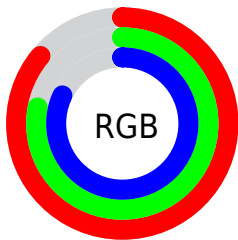
Format	Color
R _Y B	220, 199, 209
Decimal	14469073
CIE Lab	82.20, 9.07, -2.31
CIE LCh	82, 9.357, 345.723
Yxy	60.6659, 0.3219, 0.3178
Android (android.graphics.Color)	4292659153 (0xFFDCC7D1)
YUV	206.4190, 1.2724, 11.9105
Hunter-Lab	77.8883, 4.5166, 2.1556

Details

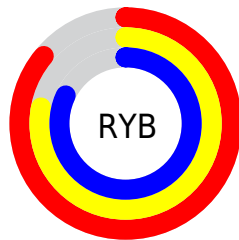
The XYZ color **61.4472, 60.6659, 68.7927** is a light color, and the websafe version is hex **CCCCCC**. A complement of this color would be **60.7815, 67.9832, 70.8945**, and the grayscale version is **58.9240, 61.9927, 67.5100**.

A 20% lighter version of the original color is **95.0500, 100.0000, 108.9000**, and **31.5588, 30.6167, 35.2566** is the 20% darker color. If you saturate the color by 10%, you get **55.3713, 50.7151, 59.9801**, and if you desaturate by 10%, it is **68.3616, 72.1268, 78.3956**.

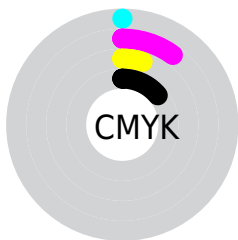
Distribution



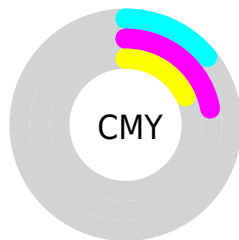
- Red (86%)
- Green (78%)
- Blue (82%)



- Red (86%)
- Yellow (78%)
- Blue (82%)



- Cyan (0%)
- Magenta (10%)
- Yellow (5%)
- Black (14%)



- Cyan (14%)
- Magenta (22%)
- Yellow (18%)

Brightness & Saturation Gradients

These gradients show how the XYZ color 61.4472, 60.6659, 68.7927 changes by changing the brightness by 10 percent. The first figure shows a shift by +10% for each color and the second figure -10%.

Similar to the brightness gradients but the following saturation gradients show a change of the XYZ color 61.4472, 60.6659, 68.7927 by changing the saturation by 10% instead.

61.4472, 60.6659,
68.7927

61.4472, 60.6659,
68.7927

419.6616,
427.0479, 474.9736

44.8401, 43.9556,
50.0722

106.0206,
105.7950, 119.1504

31.5322, 30.6356,
35.0992

134.7177,
134.9827, 151.6246

21.1583, 20.3215,
23.4551

168.1754,
169.0982, 189.5205

13.3529, 12.6290,
14.7215

206.7591,
208.5260, 233.2565

7.7506, 7.1736,
8.4797

250.8342,
253.6504, 283.2514

3.9863, 3.5709,
4.3113

300.7661,

1.6944, 1.4365,

304.8560, 339.9234

1.7976

356.9201,
362.5270, 403.6914

■ 0.4527, 0.2434,
0.4264

■ 0.0000, 0.0000,
0.0000

■ 61.4472, 60.6659,
68.7927

■ 61.4472, 60.6659,
68.7927

■ 55.3713, 50.7151,
59.9801

■ 68.3616, 72.1268,
78.3956

■ 50.0953, 42.2032,
51.9322

■ 76.1407, 85.1494,
88.8058

■ 45.5851, 35.0648,
44.6271

■ 81.5407, 93.2419,
98.9528

■ 41.8022, 29.2264,
38.0406

■ 83.3255, 93.9558,
108.3513

■ 38.7045, 24.6078,
32.1469

■ 36.2453, 21.1196,
26.9179

■ 34.3715, 18.6599,
22.3232

■ 33.0209, 17.1083,
18.3284

■ 32.0901, 16.2631,
14.8851

Harmonies

Analogous

The Analogous color harmony consists of three colors that are next to each other on the color wheel.



60.4427, 60.6659, 73.9997



61.4472, 60.6659, 68.7927



61.4211, 60.6659, 63.1311

Triad

The Triadic color harmony groups three colors that are evenly spaced from another and form a triangle on the color wheel.



61.4472, 60.6659, 68.7927



56.6310, 60.6659, 56.0633



55.0323, 60.6659, 74.2108

Complementary

The Complementary color scheme is a pair of colors which are on the opposite of each other on the color wheel.



61.4472, 60.6659, 68.7927



60.7815, 67.9832, 70.8945

Split Complementary

Split-complementary colors differ from the complementary color scheme. The scheme consists of three colors, the original color and two neighbors of the complement color.



54.0578, 60.6659, 69.0675



61.4472, 60.6659, 68.7927



54.9662, 60.6659, 58.7000

Square

The Square scheme is like the rectangle color scheme, but the four colors are evenly spaced on the color wheel.



61.4472, 60.6659, 68.7927



58.6093, 60.6659, 55.9992



54.0338, 60.6659, 63.3906



56.7232, 60.6659, 77.2475

Rectangle

The Rectangle color scheme consists of four colors that form a rectangle on the color wheel.



61.4472, 60.6659, 68.7927



60.8218, 60.6659, 59.8643



54.0338, 60.6659, 63.3906



54.6118, 60.6659, 72.6582

Sweetspot

The Sweet Spot groups the original color and five complimentary colors.



61.4489, 60.6685, 68.7940



92.0193, 94.9603, 104.7396



59.8795, 59.6967, 76.0775



19.5265, 20.0443, 22.1843



0.0000, 0.0000, 0.0000



20.3446, 21.4041, 23.3091

Same Dimension

The Same Dimension uses a secret algorithm to generate beautiful new colors.



61.4489, 60.6685, 68.7940



84.4689, 82.4802, 94.1439



60.3301, 60.3500, 62.5049



13.3129, 13.1543, 14.9089



18.8664, 9.5476, 8.9426



1.2656, 0.6359, 0.8077

Inverse Universe

The Inverse Universe completely reimagines the original color for something new.



61.4489, 60.6685, 68.7940



84.4689, 82.4802, 94.1439



61.9747, 68.3136, 77.6303



13.3129, 13.1543, 14.9089



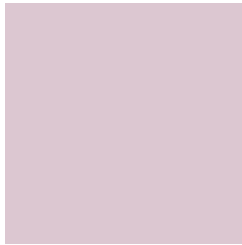
18.8664, 9.5476, 8.9426



1.2656, 0.6359, 0.8077

Previews

White Background



This preview shows how the XYZ color 61.4472, 60.6659, 68.7927 looks on a white background.

Color Contrast Check

Large Text (above 18pt) WCAG AA × Fail

Any Text WCAG AA × Fail

Large Text (above 18pt) WCAG AAA × Fail

Any Text WCAG AAA × Fail

Black Background



This preview shows how the XYZ color 61.4472, 60.6659, 68.7927 looks on a black background.

Color Contrast Check

Large Text (above 18pt) WCAG AA ✓ Pass

Any Text WCAG AA ✓ Pass

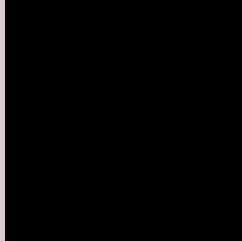
Large Text (above 18pt) WCAG AAA ✓ Pass

Any Text WCAG AAA ✓ Pass

If you want to check with other color combinations, try the [Color Contrast Checker](#).

XYZ 61.4472, 60.6659, 68.7927

Background



This preview shows how black text looks on a background with the XYZ color 61.4472, 60.6659, 68.7927.



This preview shows how white text looks on a background with the XYZ color 61.4472, 60.6659,

Color Blindness Simulation

Color vision deficiency is a very complex topic, and I could not describe the different causes any better than Wikipedia does, so if you want to learn more, you should check out their [article about color blindness](#).

Dichromacy



Original Color

61.4472, 60.6659, 68.7927

Protanopia

58.6932, 60.5871, 70.8884

Deuteranopia

61.8269, 60.5212, 68.7447



Tritanopia

62.1505, 60.6154, 72.0426

Trichromacy



Original Color

61.4472, 60.6659, 68.7927

Protanomaly

59.7424, 60.7931, 70.2135

Deuteranomaly

61.5215, 60.3638, 68.7304

Tritanomaly

61.8965, 60.5138, 70.7054

Monochromacy



Original Color

61.4472, 60.6659, 68.7927

Achromatopsia

58.6655, 61.7207, 67.2138

Achromatomaly

59.4824, 61.0657, 67.6833

CSS Examples

Text

The CSS property to change the color of the text to XYZ 61.4472, 60.6659, 68.7927 is called "color". The color property can be set on classes, ids or directly on the HTML element.

This example shows how text in the color `rgb(220, 199, 209)` looks like.

```
.text, #text, p{  
    color:rgb(220, 199, 209)  
}
```

If you want to add a text shadow in that color use the text-shadow property, you can generate a text shadow directly with our [CSS Text Shadow Generator](#).

Here you see how black text with a 4 pixel rgb(220, 199, 209) colored shadow looks like.

```
.shadow{ text-shadow: 4px 4px 2px rgb(220, 199, 209) }
```

Border

The CSS property to change the border of an element to XYZ 61.4472, 60.6659, 68.7927 is called "border". The border property can be set on classes, ids or directly on the HTML element.

This example shows the color as border, it can be applied via the CSS property "border" or "border-color".

```
.border, #border, table{ border:4px solid rgb(220, 199, 209) }
```


If only the border color should be changed use the property `border-color`.

```
.border{ border-color:rgb(220, 199, 209) }
```

If you want to add a box shadow in that color use:

Here you see how a box with a 4 pixel `rgb(220, 199, 209)` colored shadow looks like.

```
.boxshadow{ -moz-box-shadow:4px 4px 4px  
4px rgb(220, 199, 209); -webkit-box-  
shadow:4px 4px 4px 4px rgb(220, 199, 209);  
box-shadow:4px 4px 4px 4px rgb(220, 199,  
209) }
```

Background

The CSS property to change the background color of an element to XYZ 61.4472, 60.6659, 68.7927 is called "background". The background property can be set on classes, ids or directly on the HTML element.

```
.background, #background, body{  
background: rgb(220, 199, 209) }
```

If only the background color should be changed can be used:

```
.background{ background-color: rgb(220,  
199, 209) }
```

This example shows the color as background, it is applied via the CSS property "background".

To optimize and compress your CSS code, you can use our [online CSS compressor and optimizer](#) based on csstidy. If you want to create a linear or radial gradient as background or border, check our [CSS Gradient Generator](#).

Hey! You found this booklet interesting? Support Converting Colors with the new Membership Option!

The pro membership hides all ads, plus gives you double the colors in the color bucket, and more awesome pro features!

[Learn more, Memberships starting at \\$2.50/m!](#)

**Follow me
on Twitter!**

@ConvertingColor