

# Converting Colors

XYZ(61.3721, 60.1147, 60.7049)

Have a look what the booklet for  
XYZ(61.3721, 60.1147, 60.7049)  
contains.

<b>XYZ(61.2941, 60.0868, 60.5919)</b> .....	3
<b><i>Conversions</i></b> .....	4
<b><i>Details</i></b> .....	6
<b><i>Harmonies</i></b> .....	12
<b><i>Previews</i></b> .....	24
<b><i>Color Blindness Simulation</i></b> .....	28
<b><i>CSS Examples</i></b> .....	31

# Color

**XYZ(61.2941, 60.0868,  
60.5919)**

# Conversions

## Conversions Part 1

Format	Color
Hex	E2C5C4
RGB	226, 197, 196
RGB Percent	89%, 77%, 77%
CMY	0.1137, 0.2274, 0.2314
CMYK	0.00, 0.13, 0.13, 0.11
HSL	2°, 34%, 83%
HSV	2°, 13%, 89%
XYZ	61.2941, 60.0868, 60.5919
YIQ	205.5570, 17.6050, 5.8370

# Conversions

## Conversions Part 2

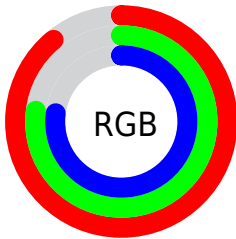
<b>Format</b>	<b>Color</b>
R <sub>Y</sub> B	226, 197, 196
Decimal	14861764
CIE Lab	81.89, 10.06, 4.26
CIE LCh	82, 10.926, 22.960
Yxy	60.0868, 0.3368, 0.3302
Android (android.graphics.Color)	4293051844 (0xFFE2C5C4)
YUV	205.5570, -4.7116, 17.9285
Hunter-Lab	77.5157, 5.4932, 7.9156

# Details

The XYZ color **61.2941, 60.0868, 60.5919** is a light color, and the websafe version is hex **FFCCCC**. A complement of this color would be **63.4172, 71.0757, 82.3287**, and the grayscale version is **58.4058, 61.4474, 66.9163**.

A 20% lighter version of the original color is **94.4114, 99.2355, 107.1069**, and **31.2825, 30.1440, 29.7608** is the 20% darker color. If you saturate the color by 10%, you get **54.3075, 49.9246, 46.5132**, and if you desaturate by 10%, it is **69.3902, 71.8467, 76.9536**.

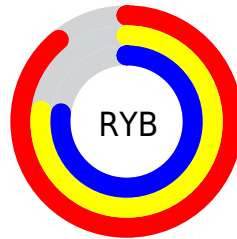
# Distribution



Red (89%)

Green (77%)

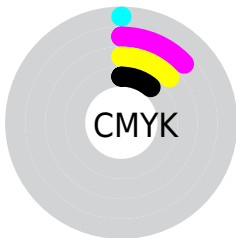
Blue (77%)



Red (89%)

Yellow (77%)

Blue (77%)

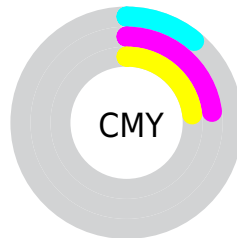


Cyan (0%)

Magenta (13%)

Yellow (13%)

Black (11%)



Cyan (11%)

Magenta (23%)

Yellow (23%)

# Brightness & Saturation Gradients

These gradients show how the XYZ color 61.2941, 60.0868, 60.5919 changes by changing the brightness by 10 percent. The first figure shows a shift by +10% for each color and the second figure -10%.

Similar to the brightness gradients but the following saturation gradients show a change of the XYZ color 61.2941, 60.0868, 60.5919 by changing the saturation by 10% instead.



61.2941, 60.0868,  
60.5919

61.2941, 60.0868,  
60.5919

419.1102,  
424.9176, 444.6411

44.7160, 43.4886,  
43.4675

105.8004,  
104.9556, 107.2396

31.4341, 30.2687,  
29.9180

134.4592,  
133.9949, 137.5999

21.0831, 20.0426,  
19.5248

167.8757,  
167.9501, 173.2093

13.2976, 12.4260,  
11.8695

206.4152,  
207.2056, 214.4863

7.7122, 7.0345,  
6.5334

250.4431,  
252.1457, 261.8495

3.9616, 3.4837,  
3.0981

300.3246,

1.6804, 1.3892,

303.1548, 315.7173

1.1449

356.4252,  
360.6173, 376.5083

0.4440, 0.2087,  
0.0000

0.0000, 0.0000,  
0.0000

61.2941, 60.0868,  
60.5919

61.2941, 60.0868,  
60.5919

54.3075, 49.9246,  
46.5132

69.3902, 71.8467,  
76.9536

48.3775, 41.2836,  
34.6123

78.6360, 85.2607,  
95.6894

43.4540, 34.0931,  
24.7819

85.1743, 94.9089,  
108.4378

39.4813, 28.2736,  
16.9036

■ 36.3980, 23.7380,  
10.8473

■ 34.1355, 20.3892,  
6.4671

■ 32.6154, 18.1164,  
3.5947

■ 31.7438, 16.7876,  
2.0267

■ 31.4464, 16.3331,  
1.4952

# Harmonies

## Analogous

The Analogous color harmony consists of three colors that are next to each other on the color wheel.



61.6281, 60.0868, 66.9941



61.2941, 60.0868, 60.5919



59.8252, 60.0868, 55.7970

# Triad

The Triadic color harmony groups three colors that are evenly spaced from another and form a triangle on the color wheel.



61.2941, 60.0868, 60.5919



53.6420, 60.0868, 58.0649



56.5686, 60.0868, 78.8624

# Complementary

The Complementary color scheme is a pair of colors which are on the opposite of each other on the color wheel.



61.2941, 60.0868, 60.5919



63.4172, 71.0757, 82.3287

# Split Complementary

Split-complementary colors differ from the complementary color scheme. The scheme consists of three colors, the original color and two neighbors of the complement color.



54.4796, 60.0868, 76.0998



61.2941, 60.0868, 60.5919



52.8197, 60.0868, 63.8792

# Square

The Square scheme is like the rectangle color scheme, but the four colors are evenly spaced on the color wheel.



61.2941, 60.0868, 60.5919



55.3974, 60.0868, 54.4081



53.1221, 60.0868, 70.5071



58.8589, 60.0868, 77.8353



# Rectangle

The Rectangle color scheme consists of four colors that form a rectangle on the color wheel.



61.2941, 60.0868, 60.5919



58.4207, 60.0868, 54.0122



53.1221, 60.0868, 70.5071



55.8204, 60.0868, 78.3403

# Sweetspot

The Sweet Spot groups the original color and five complimentary colors.



61.2958, 60.0895, 60.5932



90.3861, 93.2308, 99.4577



64.6953, 61.0857, 79.6157



19.1645, 19.6912, 20.9201



0.0000, 0.0000, 0.0000



20.3446, 21.4041, 23.3091



# Same Dimension

The Same Dimension uses a secret algorithm to generate beautiful new colors.



61.2958, 60.0895, 60.5932



77.8479, 75.0147, 74.1286



64.8720, 67.2420, 61.7853



13.7438, 13.7736, 14.2410



17.9571, 9.3521, 0.8587



1.2579, 0.6746, 0.0639

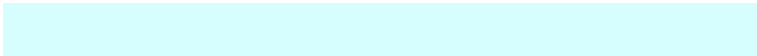


# Inverse Universe

The Inverse Universe completely reimagines the original color for something new.



63.4172, 71.0757, 82.3287



81.1659, 92.1980, 108.1258



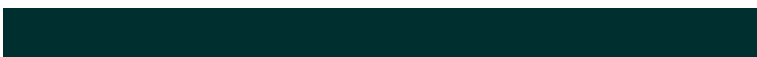
59.5398, 63.3207, 81.0362



14.0752, 15.4895, 17.6356



22.2176, 31.9049, 46.0356

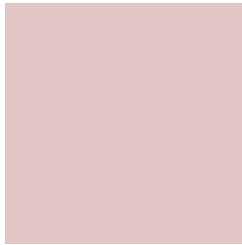


1.5525, 2.2365, 3.1951



# Previews

## White Background



This preview shows how the XYZ color 61.2941, 60.0868, 60.5919 looks on a white background.

## Color Contrast Check

Large Text (above 18pt) WCAG AA × Fail

Any Text WCAG AA × Fail

Large Text (above 18pt) WCAG AAA × Fail

Any Text WCAG AAA × Fail



# Black Background



This preview shows how the XYZ color 61.2941, 60.0868, 60.5919 looks on a black background.

## Color Contrast Check

Large Text (above 18pt) WCAG AA ✓ Pass

Any Text WCAG AA ✓ Pass

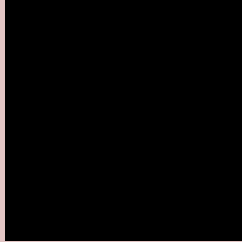
Large Text (above 18pt) WCAG AAA ✓ Pass

Any Text WCAG AAA ✓ Pass

If you want to check with other color combinations, try the [Color Contrast Checker](#).

# XYZ 61.2941, 60.0868, 60.5919

## Background



This preview shows how black text looks on a background with the XYZ color 61.2941, 60.0868, 60.5919.



This preview shows how white text looks on a background with the XYZ color 61.2941, 60.0868,



# Color Blindness Simulation

Color vision deficiency is a very complex topic, and I could not describe the different causes any better than Wikipedia does, so if you want to learn more, you should check out their [article about color blindness](#).

## Dichromacy



### Original Color

61.2941, 60.0868, 60.5919

### Protanopia

57.6772, 60.2453, 62.6214

### Deuteranopia

61.2941, 60.0868, 60.5919



## Tritanopia

63.1429, 60.1773, 69.2602

# Trichromacy



## Original Color

61.2941, 60.0868, 60.5919

## Protanomaly

59.1040, 60.2976, 61.9496

## Deuteranomaly

61.2941, 60.0868, 60.5919

## Tritanomaly

62.4379, 60.2185, 66.0901

# Monochromacy



## Original Color

61.2941, 60.0868, 60.5919

## Achromatopsia

58.6655, 61.7207, 67.2138

## Achromatomaly

59.4572, 61.1223, 64.5412

# CSS Examples

## Text

The CSS property to change the color of the text to XYZ 61.2941, 60.0868, 60.5919 is called "color". The color property can be set on classes, ids or directly on the HTML element.

This example shows how text in the color `rgb(226, 197, 196)` looks like.

```
.text, #text, p{  
    color:rgb(226, 197, 196)  
}
```

If you want to add a text shadow in that color use the text-shadow property, you can generate a text shadow directly with our [CSS Text Shadow Generator](#).

Here you see how black text with a 4 pixel rgb(226, 197, 196) colored shadow looks like.

```
.shadow{ text-shadow: 4px 4px 2px rgb(226, 197, 196) }
```

## Border

The CSS property to change the border of an element to XYZ 61.2941, 60.0868, 60.5919 is called "border". The border property can be set on classes, ids or directly on the HTML element.

This example shows the color as border, it can be applied via the CSS property "border" or "border-color".

```
.border, #border, table{ border:4px solid rgb(226, 197, 196) }
```



If only the border color should be changed use the property `border-color`.

```
.border{ border-color:rgb(226, 197, 196) }
```

If you want to add a box shadow in that color use:

Here you see how a box with a 4 pixel `rgb(226, 197, 196)` colored shadow looks like.

```
.boxshadow{ -moz-box-shadow:4px 4px 4px 4px rgb(226, 197, 196); -webkit-box-shadow:4px 4px 4px 4px rgb(226, 197, 196); box-shadow:4px 4px 4px 4px rgb(226, 197, 196) }
```

# Background

The CSS property to change the background color of an element to XYZ 61.2941, 60.0868, 60.5919 is called "background". The background property can be set on classes, ids or directly on the HTML element.

```
.background, #background, body{  
background: rgb(226, 197, 196) }
```

If only the background color should be changed can be used:

```
.background{ background-color: rgb(226,  
197, 196) }
```

This example shows the color as background, it is applied via the CSS property "background".

To optimize and compress your CSS code, you can use our [online CSS compressor and optimizer](#) based on csstidy. If you want to create a linear or radial gradient as background or border, check our [CSS Gradient Generator](#).

Hey! You found this booklet interesting? Support Converting Colors with the new Membership Option!

The pro membership hides all ads, plus gives you double the colors in the color bucket, and more awesome pro features!

**[Learn more, Memberships starting at \\$2.50/m!](#)**

**Follow me  
on Twitter!**

@ConvertingColor