

Converting Colors

XYZ(61.3992, 60.2982, 62.4215)

Have a look what the booklet for
XYZ(61.3992, 60.2982, 62.4215)
contains.

XYZ(61.5542, 60.5192, 62.4700)	3
<i>Conversions</i>	4
<i>Details</i>	6
<i>Harmonies</i>	12
<i>Previews</i>	24
<i>Color Blindness Simulation</i>	28
<i>CSS Examples</i>	31

Color

**XYZ(61.5542, 60.5192,
62.4700)**

Conversions

Conversions Part 1

Format	Color
Hex	E1C6C7
RGB	225, 198, 199
RGB Percent	88%, 78%, 78%
CMY	0.1176, 0.2235, 0.2196
CMYK	0.00, 0.12, 0.12, 0.12
HSL	358°, 31%, 83%
HSV	358°, 12%, 88%
XYZ	61.5542, 60.5192, 62.4700
YIQ	206.1870, 15.7710, 6.0350

Conversions

Conversions Part 2

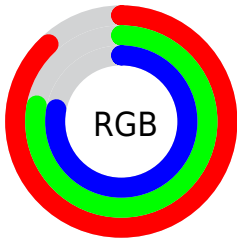
Format	Color
RYB	225, 198, 199
Decimal	14796487
CIELab	82.12, 9.66, 2.98
CIELCh	82, 10.111, 17.162
Yxy	60.5192, 0.3335, 0.3279
Android (android.graphics.Color)	4292986567 (0xFFE1C6C7)
YUV	206.1870, -3.5432, 16.4990
Hunter-Lab	77.7941, 5.0976, 6.8450

Details

The XYZ color **61.5542, 60.5192, 62.4700** is a light color, and the websafe version is hex **CCCCCC**. A complement of this color would be **63.6707, 71.2395, 80.9191**, and the grayscale version is **58.8022, 61.8645, 67.3705**.

A 20% lighter version of the original color is **95.0500, 100.0000, 108.9000**, and **31.6617, 30.5369, 31.0135** is the 20% darker color. If you saturate the color by 10%, you get **54.4490, 50.0523, 48.5598**, and if you desaturate by 10%, it is **69.7850, 72.6628, 78.5245**.

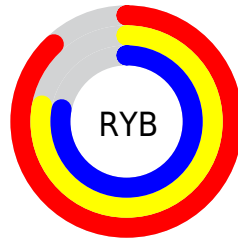
Distribution



Red (88%)

Green (78%)

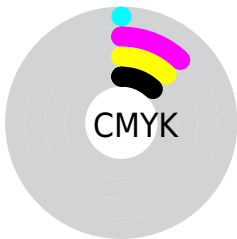
Blue (78%)



Red (88%)

Yellow (78%)

Blue (78%)

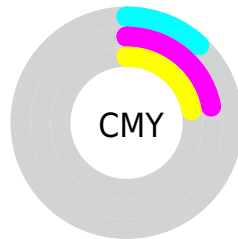


Cyan (0%)

Magenta (12%)

Yellow (12%)

Black (12%)



Cyan (12%)

Magenta (22%)

Yellow (22%)

Brightness & Saturation Gradients

These gradients show how the XYZ color 61.5542, 60.5192, 62.4700 changes by changing the brightness by 10 percent. The first figure shows a shift by +10% for each color and the second figure -10%.

Similar to the brightness gradients but the following saturation gradients show a change of the XYZ color 61.5542, 60.5192, 62.4700 by changing the saturation by 10% instead.

61.5542, 60.5192,
62.4700

61.5542, 60.5192,
62.4700

420.0466,
426.5089, 451.6983

44.9268, 43.8373,
44.9743

106.1745,
105.5825, 109.9827

31.6008, 30.5426,
31.0944

134.8982,
134.7326, 140.8368

21.2108, 20.2508,
20.4117

168.3847,
168.8075, 176.9808

13.3916, 12.5775,
12.5076

206.9993,
208.1918, 218.8333

7.7776, 7.1382,
6.9637

251.1075,
253.2696, 266.8127

4.0036, 3.5487,
3.3613

301.0745,

1.7041, 1.4245,

304.4255, 321.3377

1.2819

357.2658,
362.0438, 382.8267

■ 0.4589, 0.2347,
0.0469

■ 0.0000, 0.0000,
0.0000

■ 61.5542, 60.5192,
62.4700

■ 61.5542, 60.5192,
62.4700

■ 54.4490, 50.0523,
48.5598

■ 69.7850, 72.6628,
78.5245

■ 48.4158, 41.1807,
36.6995

■ 79.1822, 86.5435,
96.8045

■ 43.4041, 33.8287,
26.7933

■ 84.8616, 94.7477,
108.4232

■ 39.3573, 27.9109,
18.7365

■ 36.2134, 23.3338,
12.4143

■ 33.9030, 19.9927,
7.6995

■ 32.3470, 17.7673,
4.4471

■ 31.4505, 16.5134,
2.4863

■ 31.0971, 16.0259,
1.6927

Harmonies

Analogous

The Analogous color harmony consists of three colors that are next to each other on the color wheel.



61.6385, 60.5192, 68.5555



61.5542, 60.5192, 62.4700



60.3726, 60.5192, 57.6056

Triad

The Triadic color harmony groups three colors that are evenly spaced from another and form a triangle on the color wheel.



61.5542, 60.5192, 62.4700



54.5493, 60.5192, 58.1837



56.6099, 60.5192, 78.0991

Complementary

The Complementary color scheme is a pair of colors which are on the opposite of each other on the color wheel.



61.5542, 60.5192, 62.4700



63.6707, 71.2395, 80.9191

Split Complementary

Split-complementary colors differ from the complementary color scheme. The scheme consists of three colors, the original color and two neighbors of the complement color.



54.7620, 60.5192, 74.9440



61.5542, 60.5192, 62.4700



53.5924, 60.5192, 63.3045

Square

The Square scheme is like the rectangle color scheme, but the four colors are evenly spaced on the color wheel.



61.5542, 60.5192, 62.4700



56.3130, 60.5192, 55.2385



53.6692, 60.5192, 69.4432



58.7476, 60.5192, 77.8411

Rectangle

The Rectangle color scheme consists of four colors that form a rectangle on the color wheel.



61.5542, 60.5192, 62.4700



59.1378, 60.5192, 55.5951



53.6692, 60.5192, 69.4432



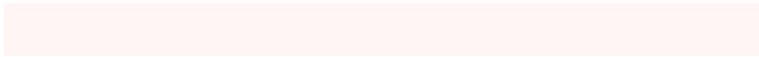
55.9353, 60.5192, 77.3947

Sweetspot

The Sweet Spot groups the original color and five complimentary colors.



61.5559, 60.5219, 62.4713



90.3403, 93.0472, 99.7259



64.4185, 61.6185, 79.7331



19.1530, 19.6450, 20.9876



0.0000, 0.0000, 0.0000



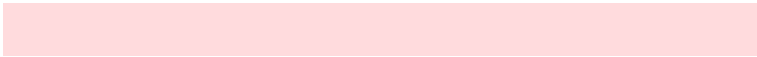
20.3446, 21.4041, 23.3091

Same Dimension

The Same Dimension uses a secret algorithm to generate beautiful new colors.



61.5559, 60.5219, 62.4713



79.6501, 77.2798, 78.8581



64.3297, 66.2541, 62.8271



13.7276, 13.7087, 14.3359



17.9288, 9.2385, 1.0247



1.2501, 0.6433, 0.1096

Inverse Universe

The Inverse Universe completely reimagines the original color for something new.



61.5559, 60.5219, 62.4713



79.6501, 77.2798, 78.8581



60.6381, 64.9573, 80.5768



13.7276, 13.7087, 14.3359



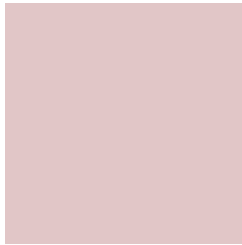
17.9288, 9.2385, 1.0247



1.2501, 0.6433, 0.1096

Previews

White Background



This preview shows how the XYZ color 61.5542, 60.5192, 62.4700 looks on a white background.

Color Contrast Check

Large Text (above 18pt) WCAG AA × Fail

Any Text WCAG AA × Fail

Large Text (above 18pt) WCAG AAA × Fail

Any Text WCAG AAA × Fail

Black Background



This preview shows how the XYZ color 61.5542, 60.5192, 62.4700 looks on a black background.

Color Contrast Check

Large Text (above 18pt) WCAG AA ✓ Pass

Any Text WCAG AA ✓ Pass

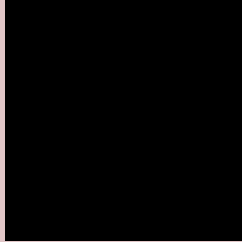
Large Text (above 18pt) WCAG AAA ✓ Pass

Any Text WCAG AAA ✓ Pass

If you want to check with other color combinations, try the [Color Contrast Checker](#).

XYZ 61.5542, 60.5192, 62.4700

Background



This preview shows how black text looks on a background with the XYZ color 61.5542, 60.5192, 62.4700.



This preview shows how white text looks on a background with the XYZ color 61.5542, 60.5192,

62.4700.

Color Blindness Simulation

Color vision deficiency is a very complex topic, and I could not describe the different causes any better than Wikipedia does, so if you want to learn more, you should check out their [article about color blindness](#).

Dichromacy



Original Color

61.5542, 60.5192, 62.4700

Protanopia

58.0290, 60.3860, 64.4743

Deuteranopia

61.8669, 60.6804, 62.4846



Tritanopia

63.1764, 60.5139, 69.9786

Trichromacy



Original Color

61.5542, 60.5192, 62.4700

Protanomaly

59.1608, 60.2865, 63.7767

Deuteranomaly

61.8669, 60.6804, 62.4846

Tritanomaly

62.5928, 60.6062, 67.4307

Monochromacy



Original Color

61.5542, 60.5192, 62.4700

Achromatopsia

58.6655, 61.7207, 67.2138

Achromatomaly

59.5760, 61.1698, 65.1669

CSS Examples

Text

The CSS property to change the color of the text to XYZ 61.5542, 60.5192, 62.4700 is called "color". The color property can be set on classes, ids or directly on the HTML element.

This example shows how text in the color `rgb(225, 198, 199)` looks like.

```
.text, #text, p{  
    color:rgb(225, 198, 199)  
}
```

If you want to add a text shadow in that color use the text-shadow property, you can generate a text shadow directly with our [CSS Text Shadow Generator](#).

Here you see how black text with a 4 pixel rgb(225, 198, 199) colored shadow looks like.

```
.shadow{ text-shadow: 4px 4px 2px rgb(225, 198, 199) }
```

Border

The CSS property to change the border of an element to XYZ 61.5542, 60.5192, 62.4700 is called "border". The border property can be set on classes, ids or directly on the HTML element.

This example shows the color as border, it can be applied via the CSS property "border" or "border-color".

```
.border, #border, table{ border:4px solid rgb(225, 198, 199) }
```


If only the border color should be changed use the property `border-color`.

```
.border{ border-color:rgb(225, 198, 199) }
```

If you want to add a box shadow in that color use:

Here you see how a box with a 4 pixel `rgb(225, 198, 199)` colored shadow looks like.

```
.boxshadow{ -moz-box-shadow:4px 4px 4px  
4px rgb(225, 198, 199); -webkit-box-  
shadow:4px 4px 4px 4px rgb(225, 198, 199);  
box-shadow:4px 4px 4px 4px rgb(225, 198,  
199) }
```

Background

The CSS property to change the background color of an element to XYZ 61.5542, 60.5192, 62.4700 is called "background". The background property can be set on classes, ids or directly on the HTML element.

```
.background, #background, body{  
background: rgb(225, 198, 199) }
```

If only the background color should be changed can be used:

```
.background{ background-color: rgb(225,  
198, 199) }
```

This example shows the color as background, it is applied via the CSS property "background".

To optimize and compress your CSS code, you can use our [online CSS compressor and optimizer](#) based on csstidy. If you want to create a linear or radial gradient as background or border, check our [CSS Gradient Generator](#).

Hey! You found this booklet interesting? Support Converting Colors with the new Membership Option!

The pro membership hides all ads, plus gives you double the colors in the color bucket, and more awesome pro features!

[Learn more, Memberships starting at \\$2.50/m!](#)

**Follow me
on Twitter!**

@ConvertingColor