

Converting Colors

XYZ(61.4138, 62.1446, 64.0166)

Have a look what the booklet for
XYZ(61.4138, 62.1446, 64.0166)
contains.

XYZ(61.4138, 62.1446, 64.0166)	3
<i>Conversions</i>	4
<i>Details</i>	6
<i>Harmonies</i>	12
<i>Previews</i>	24
<i>Color Blindness Simulation</i>	28
<i>CSS Examples</i>	31

Color

**XYZ(61.4138, 62.1446,
64.0166)**

Conversions

Conversions Part 1

Format	Color
Hex	DCCBC9
RGB	220, 203, 201
RGB Percent	86%, 80%, 79%
CMY	0.1373, 0.2039, 0.2118
CMYK	0.00, 0.08, 0.09, 0.14
HSL	6°, 21%, 83%
HSV	6°, 9%, 86%
XYZ	61.4138, 62.1446, 64.0166
YIQ	207.8550, 10.7740, 2.9820

Conversions

Conversions Part 2

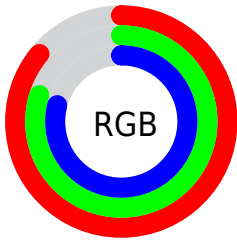
Format	Color
R _Y B	220, 203, 201
Decimal	14470089
CIE Lab	82.99, 5.58, 3.12
CIE LCh	83, 6.394, 29.250
Yxy	62.1446, 0.3274, 0.3313
Android (android.graphics.Color)	4292660169 (0xFFDCCBC9)
YUV	207.8550, -3.3795, 10.6512
Hunter-Lab	78.8318, 1.1044, 7.0349

Details

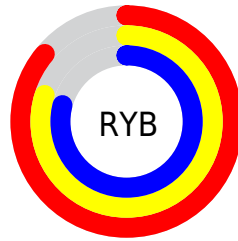
The XYZ color **61.4138, 62.1446, 64.0166** is a light color, and the websafe version is hex **CCCCCC**. A complement of this color would be **62.0769, 67.7265, 77.5117**, and the grayscale version is **59.8781, 62.9964, 68.6031**.

A 20% lighter version of the original color is **95.0500, 100.0000, 108.9000**, and **31.5310, 31.6008, 32.0415** is the 20% darker color. If you saturate the color by 10%, you get **54.6531, 52.4720, 49.8961**, and if you desaturate by 10%, it is **69.1387, 73.1509, 80.2887**.

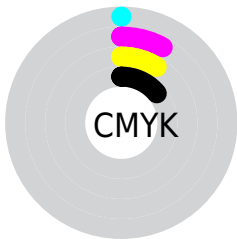
Distribution



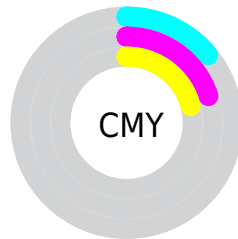
- Red (86%)
- Green (80%)
- Blue (79%)



- Red (86%)
- Yellow (80%)
- Blue (79%)



- Cyan (0%)
- Magenta (8%)
- Yellow (9%)
- Black (14%)



- Cyan (14%)
- Magenta (20%)
- Yellow (21%)

Brightness & Saturation Gradients

These gradients show how the XYZ color 61.4138, 62.1446, 64.0166 changes by changing the brightness by 10 percent. The first figure shows a shift by +10% for each color and the second figure -10%.

Similar to the brightness gradients but the following saturation gradients show a change of the XYZ color 61.4138, 62.1446, 64.0166 by changing the saturation by 10% instead.

61.4138, 62.1446,
64.0166

61.4138, 62.1446,
64.0166

419.5413,
432.4583, 457.4587

44.8130, 45.1495,
46.2179

105.9726,
107.9345, 112.2345

31.5108, 31.5752,
32.0679

134.6613,
137.4981, 143.4908

21.1419, 21.0373,
21.1481

168.1100,
172.0201, 180.0700

13.3408, 13.1512,
13.0400

206.6841,
211.8847, 222.3907

7.7422, 7.5328,
7.3250

250.7489,
257.4765, 270.8713

3.9809, 3.7975,
3.5847

300.6698,

1.6913, 1.5609,

309.1797, 325.9305

1.4004

356.8122,
367.3789, 387.9868

■ 0.4508, 0.3310,
0.1420

■ 0.0000, 0.0000,
0.0000

■ 61.4138, 62.1446,
64.0166

■ 61.4138, 62.1446,
64.0166

■ 54.6531, 52.4720,
49.8961

■ 69.1387, 73.1509,
80.2887

■ 48.8136, 44.0745,
37.8333

■ 77.8581, 85.5302,
98.7930

■ 43.8569, 36.9013,
27.7332

■ 83.3256, 93.9558,
108.3513

■ 39.7398, 30.8952,
19.4919

■ 36.4155, 25.9943,
12.9958

■ 33.8325, 22.1309,
8.1189

■ 31.9331, 19.2300,
4.7181

■ 30.6512, 17.2063,
2.6254

■ 29.8989, 15.9562,
1.5902

Harmonies

Analogous

The Analogous color harmony consists of three colors that are next to each other on the color wheel.



61.7617, 62.1446, 67.7644



61.4138, 62.1446, 64.0166



60.4347, 62.1446, 61.3374

Triad

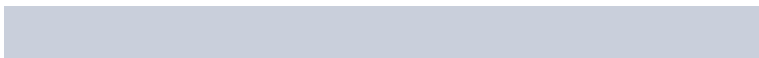
The Triadic color harmony groups three colors that are evenly spaced from another and form a triangle on the color wheel.



61.4138, 62.1446, 64.0166



56.8138, 62.1446, 63.8507



59.0318, 62.1446, 75.5575

Complementary

The Complementary color scheme is a pair of colors which are on the opposite of each other on the color wheel.



61.4138, 62.1446, 64.0166



62.0769, 67.7265, 77.5117

Split Complementary

Split-complementary colors differ from the complementary color scheme. The scheme consists of three colors, the original color and two neighbors of the complement color.



57.7193, 62.1446, 74.4132



61.4138, 62.1446, 64.0166



56.4510, 62.1446, 67.5655

Square

The Square scheme is like the rectangle color scheme, but the four colors are evenly spaced on the color wheel.



61.4138, 62.1446, 64.0166



57.7786, 62.1446, 61.2443



56.7799, 62.1446, 71.4493



60.3736, 62.1446, 74.5193

Rectangle

The Rectangle color scheme consists of four colors that form a rectangle on the color wheel.



61.4138, 62.1446, 64.0166



59.5632, 62.1446, 60.4652



56.7799, 62.1446, 71.4493



58.5727, 62.1446, 75.4146

Sweetspot

The Sweet Spot groups the original color and five complimentary colors.



61.4155, 62.1473, 64.0179



91.6982, 95.2283, 101.8270



63.0707, 62.0571, 75.0531



19.4400, 20.1161, 21.4008



0.0000, 0.0000, 0.0000



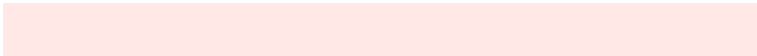
20.3446, 21.4041, 23.3091

Same Dimension

The Same Dimension uses a secret algorithm to generate beautiful new colors.



61.4155, 62.1473, 64.0179



84.3628, 84.7651, 86.4102



63.7023, 66.7208, 64.7802



13.1660, 13.2714, 13.5933



17.5432, 9.3719, 0.8843



1.1748, 0.6836, 0.0700

Inverse Universe

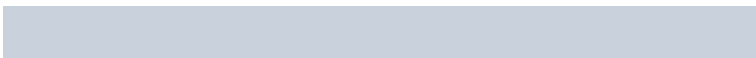
The Inverse Universe completely reimagines the original color for something new.



62.0769, 67.7265, 77.5117



85.4309, 93.7764, 108.2057



59.7090, 62.9906, 76.7224



13.3215, 14.5826, 16.7648



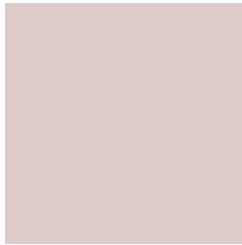
19.3216, 26.5126, 43.8375



1.2862, 1.7864, 2.8515

Previews

White Background



This preview shows how the XYZ color 61.4138, 62.1446, 64.0166 looks on a white background.

Color Contrast Check

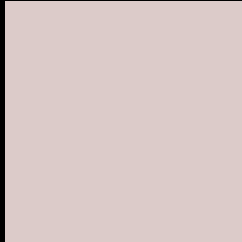
Large Text (above 18pt) WCAG AA × Fail

Any Text WCAG AA × Fail

Large Text (above 18pt) WCAG AAA × Fail

Any Text WCAG AAA × Fail

Black Background



This preview shows how the XYZ color 61.4138, 62.1446, 64.0166 looks on a black background.

Color Contrast Check

Large Text (above 18pt) WCAG AA ✓ Pass

Any Text WCAG AA ✓ Pass

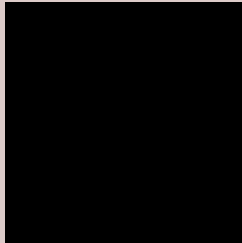
Large Text (above 18pt) WCAG AAA ✓ Pass

Any Text WCAG AAA ✓ Pass

If you want to check with other color combinations, try the [Color Contrast Checker](#).

XYZ 61.4138, 62.1446, 64.0166

Background



This preview shows how black text looks on a background with the XYZ color 61.4138, 62.1446, 64.0166.



This preview shows how white text looks on a background with the XYZ color 61.4138, 62.1446,

Color Blindness Simulation

Color vision deficiency is a very complex topic, and I could not describe the different causes any better than Wikipedia does, so if you want to learn more, you should check out their [article about color blindness](#).

Dichromacy



Original Color

61.4138, 62.1446, 64.0166

Protanopia

59.7148, 62.3033, 65.3783

Deuteranopia

63.6280, 62.2308, 64.5353



Tritanopia

63.4055, 62.2608, 73.6414

Trichromacy



Original Color

61.4138, 62.1446, 64.0166

Protanomaly

60.2235, 62.2231, 64.7132

Deuteranomaly

62.9113, 62.2063, 64.5683

Tritanomaly

62.6972, 62.3164, 70.3518

Monochromacy



Original Color

61.4138, 62.1446, 64.0166

Achromatopsia

59.9535, 63.0757, 68.6895

Achromatomaly

60.2421, 62.5474, 66.6554

CSS Examples

Text

The CSS property to change the color of the text to XYZ 61.4138, 62.1446, 64.0166 is called "color". The color property can be set on classes, ids or directly on the HTML element.

This example shows how text in the color `rgb(220, 203, 201)` looks like.

```
.text, #text, p{  
    color:rgb(220, 203, 201)  
}
```

If you want to add a text shadow in that color use the text-shadow property, you can generate a text shadow directly with our [CSS Text Shadow Generator](#).

Here you see how black text with a 4 pixel rgb(220, 203, 201) colored shadow looks like.

```
.shadow{ text-shadow: 4px 4px 2px rgb(220, 203, 201) }
```

Border

The CSS property to change the border of an element to XYZ 61.4138, 62.1446, 64.0166 is called "border". The border property can be set on classes, ids or directly on the HTML element.

This example shows the color as border, it can be applied via the CSS property "border" or "border-color".

```
.border, #border, table{ border:4px solid rgb(220, 203, 201) }
```


If only the border color should be changed use the property `border-color`.

```
.border{ border-color:rgb(220, 203, 201) }
```

If you want to add a box shadow in that color use:

Here you see how a box with a 4 pixel `rgb(220, 203, 201)` colored shadow looks like.

```
.boxshadow{ -moz-box-shadow:4px 4px 4px  
4px rgb(220, 203, 201); -webkit-box-  
shadow:4px 4px 4px 4px rgb(220, 203, 201);  
box-shadow:4px 4px 4px 4px rgb(220, 203,  
201) }
```

Background

The CSS property to change the background color of an element to XYZ 61.4138, 62.1446, 64.0166 is called "background". The background property can be set on classes, ids or directly on the HTML element.

```
.background, #background, body{  
background: rgb(220, 203, 201) }
```

If only the background color should be changed can be used:

```
.background{ background-color: rgb(220,  
203, 201) }
```

This example shows the color as background, it is applied via the CSS property "background".

To optimize and compress your CSS code, you can use our [online CSS compressor and optimizer](#) based on csstidy. If you want to create a linear or radial gradient as background or border, check our [CSS Gradient Generator](#).

Hey! You found this booklet interesting? Support Converting Colors with the new Membership Option!

The pro membership hides all ads, plus gives you double the colors in the color bucket, and more awesome pro features!

[Learn more, Memberships starting at \\$2.50/m!](#)

**Follow me
on Twitter!**

@ConvertingColor