

Converting Colors

XYZ(61.4625, 62.9196, 54.1316)

Have a look what the booklet for
XYZ(61.4625, 62.9196, 54.1316)
contains.

| | |
|--|----|
| XYZ(61.5344, 63.1309, 54.2897) | 3 |
| <i>Conversions</i> | 4 |
| <i>Details</i> | 6 |
| <i>Harmonies</i> | 12 |
| <i>Previews</i> | 24 |
| <i>Color Blindness Simulation</i> | 28 |
| <i>CSS Examples</i> | 31 |

Color

**XYZ(61.5344, 63.1309,
54.2897)**

Conversions

Conversions Part 1

| Format | Color |
|---------------|----------------------------|
| Hex | E1CDB8 |
| RGB | 225, 205, 184 |
| RGB Percent | 88%, 80%, 72% |
| CMY | 0.1176, 0.1961, 0.2784 |
| CMYK | 0.00, 0.09, 0.18, 0.12 |
| HSL | 31°, 41%, 80% |
| HSV | 31°, 18%, 88% |
| XYZ | 61.5344, 63.1309, 54.2897 |
| YIQ | 208.5860, 18.6610, -2.2910 |

Conversions

Conversions Part 2

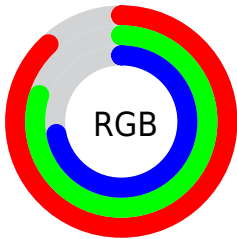
| Format | Color |
|-------------------------------------|--------------------------------|
| R _Y B | 223, 225, 184 |
| Decimal | 14798264 |
| CIE Lab | 83.51, 3.62, 12.98 |
| CIE LCh | 84, 13.473, 74.432 |
| Yxy | 63.1309, 0.3439, 0.3528 |
| Android (android.graphics.Color) | 4292988344 (0xFFE1CDB8) |
| YUV | 208.5860, -12.1209, 14.3951 |
| Hunter-Lab | 79.4550, -0.8057, 15.1070 |

Details

The XYZ color **61.5344, 63.1309, 54.2897** is a light color, and the websafe version is hex **CCCCCC**. A complement of this color would be **54.9503, 58.8110, 79.6901**, and the grayscale version is **60.4040, 63.5497, 69.2056**.

A 20% lighter version of the original color is **92.7282, 99.0713, 96.6734**, and **31.5255, 32.2069, 26.0277** is the 20% darker color. If you saturate the color by 10%, you get **56.8279, 57.1966, 41.9955**, and if you desaturate by 10%, it is **66.8036, 69.5892, 68.6237**.

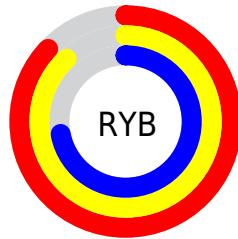
Distribution



Red (88%)

Green (80%)

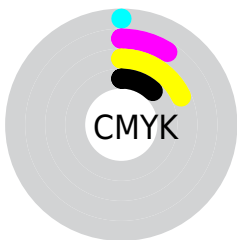
Blue (72%)



Red (87%)

Yellow (88%)

Blue (72%)

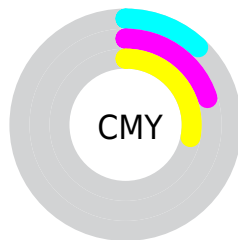


Cyan (0%)

Magenta (9%)

Yellow (18%)

Black (12%)



Cyan (12%)

Magenta (20%)

Yellow (28%)

Brightness & Saturation Gradients

These gradients show how the XYZ color 61.5344, 63.1309, 54.2897 changes by changing the brightness by 10 percent. The first figure shows a shift by +10% for each color and the second figure -10%.

Similar to the brightness gradients but the following saturation gradients show a change of the XYZ color 61.5344, 63.1309, 54.2897 by changing the saturation by 10% instead.

61.5344, 63.1309,
54.2897

61.5344, 63.1309,
54.2897

419.9754,
436.0444, 420.4196

44.9108, 45.9471,
38.4386

106.1461,
109.3583, 97.9602

31.5881, 32.2041,
26.0188

134.8648,
139.1708, 126.6166

21.2011, 21.5174,
16.6118

168.3460,
173.9616, 160.3785

13.3844, 13.5028,
9.7991

206.9549,
214.1151, 199.6644

7.7726, 7.7756,
5.1621

251.0569,
260.0157, 244.8930

4.0004, 3.9517,
2.2823

301.0175,

1.7023, 1.6466,

312.0479, 296.4827

0.7213

357.2018,
370.5960, 354.8520

■ 0.4577, 0.3887,
0.0000

■ 0.0000, 0.0000,
0.0000

■ 61.5344, 63.1309,
54.2897

■ 61.5344, 63.1309,
54.2897

■ 56.8279, 57.1966,
41.9955

■ 66.8036, 69.5892,
68.6237

■ 52.6575, 51.7632,
31.6426

■ 72.6506, 76.5768,
85.0817

■ 49.0021, 46.8181,
23.1304

■ 79.0961, 84.1099,
103.7481

■ 45.8366, 42.3450,
16.3476

■ 82.9458, 90.9162,
107.7846

■ 43.1337, 38.3263,
11.1703

■ 84.8615, 94.7477,
108.4232

■ 40.8627, 34.7429,
7.4582

■ 38.9880, 31.5733,
5.0463

■ 37.4604, 28.7903,
3.6976

■ 37.2129, 28.3305,
3.5070

Harmonies

Analogous

The Analogous color harmony consists of three colors that are next to each other on the color wheel.



64.1329, 63.1309, 58.0142



61.5344, 63.1309, 54.2897



58.6058, 63.1309, 54.2187

Triad

The Triadic color harmony groups three colors that are evenly spaced from another and form a triangle on the color wheel.



61.5344, 63.1309, 54.2897



54.6930, 63.1309, 72.8542



64.0500, 63.1309, 80.9629

Complementary

The Complementary color scheme is a pair of colors which are on the opposite of each other on the color wheel.



61.5344, 63.1309, 54.2897



54.9503, 58.8110, 79.6901

Split Complementary

Split-complementary colors differ from the complementary color scheme. The scheme consists of three colors, the original color and two neighbors of the complement color.



61.4243, 63.1309, 85.6442



61.5344, 63.1309, 54.2897



56.0563, 63.1309, 80.7098

Square

The Square scheme is like the rectangle color scheme, but the four colors are evenly spaced on the color wheel.



61.5344, 63.1309, 54.2897



54.7203, 63.1309, 64.4836



58.4992, 63.1309, 85.5480



65.6174, 63.1309, 73.1772

Rectangle

The Rectangle color scheme consists of four colors that form a rectangle on the color wheel.



61.5344, 63.1309, 54.2897



56.8634, 63.1309, 56.2288



58.4992, 63.1309, 85.5480



63.2582, 63.1309, 82.9790

Sweetspot

The Sweet Spot groups the original color and five complimentary colors.



61.5361, 63.1337, 54.2910



91.1129, 95.3024, 97.7944



59.1517, 54.6730, 64.8777



19.3869, 20.2604, 20.6105



0.0000, 0.0000, 0.0000



20.3446, 21.4041, 23.3091

Same Dimension

The Same Dimension uses a secret algorithm to generate beautiful new colors.



61.5361, 63.1337, 54.2910



79.1817, 80.6679, 65.3691



66.6288, 73.3192, 55.9886



14.2849, 14.8558, 14.4213



21.5612, 16.5602, 2.0600



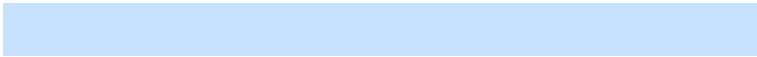
1.5841, 1.3270, 0.1726

Inverse Universe

The Inverse Universe completely reimagines the original color for something new.



54.9503, 58.8110, 79.6901



68.8437, 73.8825, 105.2400



50.4991, 49.9085, 78.2063



13.5011, 14.3413, 17.4443



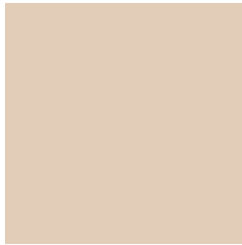
11.1442, 9.7579, 42.3445



0.8619, 0.8552, 2.9649

Previews

White Background



This preview shows how the XYZ color 61.5344, 63.1309, 54.2897 looks on a white background.

Color Contrast Check

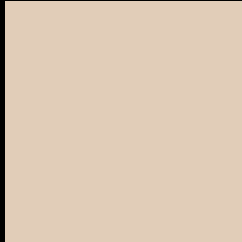
Large Text (above 18pt) WCAG AA × Fail

Any Text WCAG AA × Fail

Large Text (above 18pt) WCAG AAA × Fail

Any Text WCAG AAA × Fail

Black Background



This preview shows how the XYZ color 61.5344, 63.1309, 54.2897 looks on a black background.

Color Contrast Check

Large Text (above 18pt) WCAG AA ✓ Pass

Any Text WCAG AA ✓ Pass

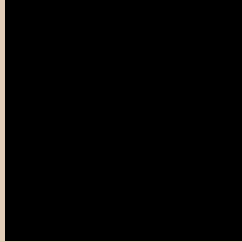
Large Text (above 18pt) WCAG AAA ✓ Pass

Any Text WCAG AAA ✓ Pass

If you want to check with other color combinations, try the [Color Contrast Checker](#).

XYZ 61.5344, 63.1309, 54.2897

Background



This preview shows how black text looks on a background with the XYZ color 61.5344, 63.1309, 54.2897.



This preview shows how white text looks on a background with the XYZ color 61.5344, 63.1309,

Color Blindness Simulation

Color vision deficiency is a very complex topic, and I could not describe the different causes any better than Wikipedia does, so if you want to learn more, you should check out their [article about color blindness](#).

Dichromacy



Original Color

61.5344, 63.1309, 54.2897

Protanopia

59.9281, 63.3662, 54.9713

Deuteranopia

64.5687, 63.2806, 54.7102



Tritanopia

65.3620, 62.9244, 73.6664

Trichromacy



Original Color

61.5344, 63.1309, 54.2897

Protanomaly

60.5850, 63.3441, 54.9324

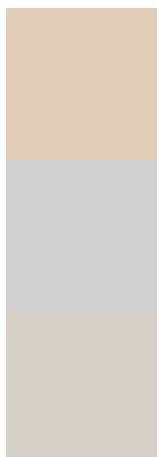
Deuteranomaly

63.4818, 63.0675, 54.7263

Tritanomaly

64.0145, 63.0947, 65.9313

Monochromacy



Original Color

61.5344, 63.1309, 54.2897

Achromatopsia

60.6036, 63.7597, 69.4343

Achromatomaly

61.0055, 63.7290, 63.7292

CSS Examples

Text

The CSS property to change the color of the text to XYZ 61.5344, 63.1309, 54.2897 is called "color". The color property can be set on classes, ids or directly on the HTML element.

This example shows how text in the color `rgb(225, 205, 184)` looks like.

```
.text, #text, p{  
    color:rgb(225, 205, 184)  
}
```

If you want to add a text shadow in that color use the text-shadow property, you can generate a text shadow directly with our [CSS Text Shadow Generator](#).

Here you see how black text with a 4 pixel rgb(225, 205, 184) colored shadow looks like.

```
.shadow{ text-shadow: 4px 4px 2px rgb(225, 205, 184) }
```

Border

The CSS property to change the border of an element to XYZ 61.5344, 63.1309, 54.2897 is called "border". The border property can be set on classes, ids or directly on the HTML element.

This example shows the color as border, it can be applied via the CSS property "border" or "border-color".

```
.border, #border, table{ border:4px solid rgb(225, 205, 184) }
```


If only the border color should be changed use the property `border-color`.

```
.border{ border-color:rgb(225, 205, 184) }
```

If you want to add a box shadow in that color use:

Here you see how a box with a 4 pixel `rgb(225, 205, 184)` colored shadow looks like.

```
.boxshadow{ -moz-box-shadow:4px 4px 4px  
4px rgb(225, 205, 184); -webkit-box-  
shadow:4px 4px 4px 4px rgb(225, 205, 184);  
box-shadow:4px 4px 4px 4px rgb(225, 205,  
184) }
```

Background

The CSS property to change the background color of an element to XYZ 61.5344, 63.1309, 54.2897 is called "background". The background property can be set on classes, ids or directly on the HTML element.

```
.background, #background, body{  
background: rgb(225, 205, 184) }
```

If only the background color should be changed can be used:

```
.background{ background-color: rgb(225,  
205, 184) }
```

This example shows the color as background, it is applied via the CSS property "background".

To optimize and compress your CSS code, you can use our [online CSS compressor and optimizer](#) based on csstidy. If you want to create a linear or radial gradient as background or border, check our [CSS Gradient Generator](#).

Hey! You found this booklet interesting? Support Converting Colors with the new Membership Option!

The pro membership hides all ads, plus gives you double the colors in the color bucket, and more awesome pro features!

[Learn more, Memberships starting at \\$2.50/m!](#)

**Follow me
on Twitter!**

@ConvertingColor