

Converting Colors

XYZ(61.4784, 62.1375, 55.2016)

Have a look what the booklet for
XYZ(61.4784, 62.1375, 55.2016)
contains.

XYZ(61.3475, 61.9550, 55.1795)	3
<i>Conversions</i>	4
<i>Details</i>	6
<i>Harmonies</i>	12
<i>Previews</i>	24
<i>Color Blindness Simulation</i>	28
<i>CSS Examples</i>	31

Color

**XYZ(61.3475, 61.9550,
55.1795)**

Conversions

Conversions Part 1

Format	Color
Hex	E2CABA
RGB	226, 202, 186
RGB Percent	89%, 79%, 73%
CMY	0.1137, 0.2078, 0.2706
CMYK	0.00, 0.11, 0.18, 0.11
HSL	24°, 41%, 81%
HSV	24°, 18%, 89%
XYZ	61.3475, 61.9550, 55.1795
YIQ	207.3520, 19.4400, 0.1120

Conversions

Conversions Part 2

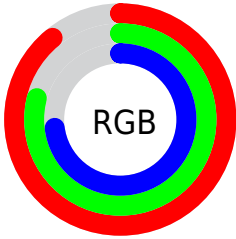
Format	Color
R _Y B	226, 213, 186
Decimal	14863034
CIE Lab	82.89, 5.86, 11.04
CIE LCh	83, 12.502, 62.062
Yxy	61.9550, 0.3437, 0.3471
Android (android.graphics.Color)	4293053114 (0xFFE2CABA)
YUV	207.3520, -10.5265, 16.3543
Hunter-Lab	78.7115, 1.3772, 13.5337

Details

The XYZ color **61.3475, 61.9550, 55.1795** is a light color, and the websafe version is hex **CCCCCC**. A complement of this color would be **57.0234, 62.0218, 80.9180**, and the grayscale version is **59.5936, 62.6971, 68.2771**.

A 20% lighter version of the original color is **93.0270, 99.1908, 98.2471**, and **31.4011, 31.4193, 26.5998** is the 20% darker color. If you saturate the color by 10%, you get **56.0902, 54.9858, 42.4963**, and if you desaturate by 10%, it is **67.2677, 69.6408, 69.9599**.

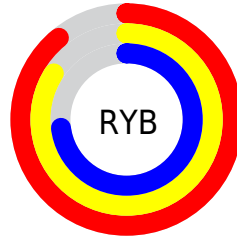
Distribution



Red (89%)

Green (79%)

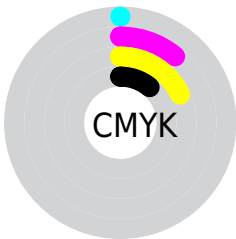
Blue (73%)



Red (89%)

Yellow (84%)

Blue (73%)

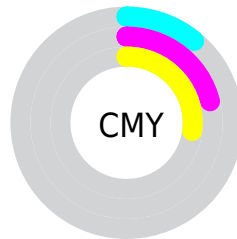


Cyan (0%)

Magenta (11%)

Yellow (18%)

Black (11%)



Cyan (11%)

Magenta (21%)

Yellow (27%)

Brightness & Saturation Gradients

These gradients show how the XYZ color 61.3475, 61.9550, 55.1795 changes by changing the brightness by 10 percent. The first figure shows a shift by +10% for each color and the second figure -10%.

Similar to the brightness gradients but the following saturation gradients show a change of the XYZ color 61.3475, 61.9550, 55.1795 by changing the saturation by 10% instead.

61.3475, 61.9550,
55.1795

61.3475, 61.9550,
55.1795

419.3026,
431.7669, 423.8931

44.7593, 44.9963,
39.1459

105.8772,
107.6605, 99.2777

31.4683, 31.4545,
26.5645

134.5494,
137.1761, 128.1793

21.1093, 20.9452,
17.0169

167.9803,
171.6462, 162.2074

13.3168, 13.0840,
10.0845

206.5352,
211.4551, 201.7805

7.7256, 7.4864,
5.3487

250.5795,
256.9872, 247.3170

3.9702, 3.7681,
2.3910

300.4786,

1.6853, 1.5447,

308.6270, 299.2356

0.7815

356.5979,
366.7587, 357.9548

■ 0.4470, 0.3199,
0.0000

■ 0.0000, 0.0000,
0.0000

■ 61.3475, 61.9550,
55.1795

■ 61.3475, 61.9550,
55.1795

■ 56.0902, 54.9858,
42.4963

■ 67.2677, 69.6408,
69.9599

■ 51.4659, 48.7034,
31.8100

■ 73.8693, 78.0552,
86.9235

■ 47.4494, 43.0879,
23.0183

■ 81.1763, 87.2207,
106.1564

■ 44.0120, 38.1155,
16.0077

■ 85.1743, 94.9089,
108.4378

■ 41.1221, 33.7604,
10.6526

■ 38.7448, 29.9949,
6.8107

■ 36.8399, 26.7886,
4.3152

■ 35.3551, 24.1050,
2.9387

■ 35.0564, 23.5531,
2.6985

Harmonies

Analogous

The Analogous color harmony consists of three colors that are next to each other on the color wheel.



63.3876, 61.9550, 59.8839



61.3475, 61.9550, 55.1795



58.7001, 61.9550, 53.6889

Triad

The Triadic color harmony groups three colors that are evenly spaced from another and form a triangle on the color wheel.



61.3475, 61.9550, 55.1795



53.8585, 61.9550, 67.9938



61.6799, 61.9550, 80.8321

Complementary

The Complementary color scheme is a pair of colors which are on the opposite of each other on the color wheel.



61.3475, 61.9550, 55.1795



57.0234, 62.0218, 80.9180

Split Complementary

Split-complementary colors differ from the complementary color scheme. The scheme consists of three colors, the original color and two neighbors of the complement color.



59.0730, 61.9550, 83.4015



61.3475, 61.9550, 55.1795



54.6034, 61.9550, 75.6463

Square

The Square scheme is like the rectangle color scheme, but the four colors are evenly spaced on the color wheel.



61.3475, 61.9550, 55.1795



54.4264, 61.9550, 60.7421



56.4920, 61.9550, 81.4359



63.5836, 61.9550, 74.6526

Rectangle

The Rectangle color scheme consists of four colors that form a rectangle on the color wheel.



61.3475, 61.9550, 55.1795



56.9615, 61.9550, 54.6191



56.4920, 61.9550, 81.4359



60.8541, 61.9550, 82.1670

Sweetspot

The Sweet Spot groups the original color and five complimentary colors.



61.3492, 61.9578, 55.1808



90.6729, 94.4225, 97.6478



60.5565, 55.9405, 68.5794



19.2800, 20.0467, 20.5748



0.0000, 0.0000, 0.0000



20.3446, 21.4041, 23.3091

Same Dimension

The Same Dimension uses a secret algorithm to generate beautiful new colors.



61.3492, 61.9578, 55.1808



78.1902, 78.2073, 66.5107



66.3488, 71.9571, 56.8474



14.1551, 14.5961, 14.3781



20.1084, 13.6547, 1.5758



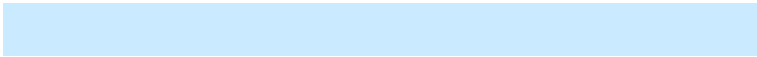
1.4797, 1.1183, 0.1379

Inverse Universe

The Inverse Universe completely reimagines the original color for something new.



57.0234, 62.0218, 80.9180



71.5603, 78.3034, 105.9502



52.3914, 52.7578, 79.3740



13.6325, 14.6041, 17.4880



12.9394, 13.3483, 42.9429



0.9838, 1.0990, 3.0055

Previews

White Background



This preview shows how the XYZ color 61.3475, 61.9550, 55.1795 looks on a white background.

Color Contrast Check

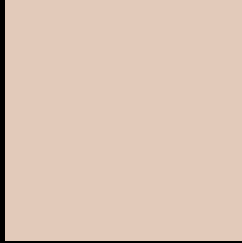
Large Text (above 18pt) WCAG AA × Fail

Any Text WCAG AA × Fail

Large Text (above 18pt) WCAG AAA × Fail

Any Text WCAG AAA × Fail

Black Background



This preview shows how the XYZ color 61.3475, 61.9550, 55.1795 looks on a black background.

Color Contrast Check

Large Text (above 18pt) WCAG AA ✓ Pass

Any Text WCAG AA ✓ Pass

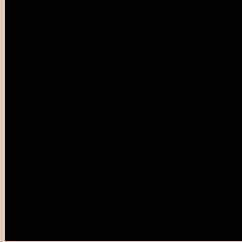
Large Text (above 18pt) WCAG AAA ✓ Pass

Any Text WCAG AAA ✓ Pass

If you want to check with other color combinations, try the [Color Contrast Checker](#).

XYZ 61.3475, 61.9550, 55.1795

Background



This preview shows how black text looks on a background with the XYZ color 61.3475, 61.9550, 55.1795.



This preview shows how white text looks on a background with the XYZ color 61.3475, 61.9550,

Color Blindness Simulation

Color vision deficiency is a very complex topic, and I could not describe the different causes any better than Wikipedia does, so if you want to learn more, you should check out their [article about color blindness](#).

Dichromacy



Original Color

61.3475, 61.9550, 55.1795

Protanopia

59.1727, 62.2205, 56.4680

Deuteranopia

63.3247, 61.9271, 55.6293



Tritanopia

64.8375, 62.0153, 71.5036

Trichromacy



Original Color

61.3475, 61.9550, 55.1795

Protanomaly

60.0144, 62.3106, 55.8778

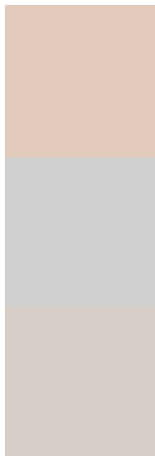
Deuteranomaly

62.5789, 61.8853, 55.6605

Tritanomaly

63.5160, 61.8167, 65.0841

Monochromacy



Original Color

61.3475, 61.9550, 55.1795

Achromatopsia

59.3074, 62.3960, 67.9493

Achromatomaly

59.8717, 62.0823, 62.8603

CSS Examples

Text

The CSS property to change the color of the text to XYZ 61.3475, 61.9550, 55.1795 is called "color". The color property can be set on classes, ids or directly on the HTML element.

This example shows how text in the color `rgb(226, 202, 186)` looks like.

```
.text, #text, p{  
    color:rgb(226, 202, 186)  
}
```

If you want to add a text shadow in that color use the text-shadow property, you can generate a text shadow directly with our [CSS Text Shadow Generator](#).

Here you see how black text with a 4 pixel rgb(226, 202, 186) colored shadow looks like.

```
.shadow{ text-shadow: 4px 4px 2px rgb(226, 202, 186) }
```

Border

The CSS property to change the border of an element to XYZ 61.3475, 61.9550, 55.1795 is called "border". The border property can be set on classes, ids or directly on the HTML element.

This example shows the color as border, it can be applied via the CSS property "border" or "border-color".

```
.border, #border, table{ border:4px solid rgb(226, 202, 186) }
```


If only the border color should be changed use the property `border-color`.

```
.border{ border-color:rgb(226, 202, 186) }
```

If you want to add a box shadow in that color use:

Here you see how a box with a 4 pixel `rgb(226, 202, 186)` colored shadow looks like.

```
.boxshadow{ -moz-box-shadow:4px 4px 4px  
4px rgb(226, 202, 186); -webkit-box-  
shadow:4px 4px 4px 4px rgb(226, 202, 186);  
box-shadow:4px 4px 4px 4px rgb(226, 202,  
186) }
```

Background

The CSS property to change the background color of an element to XYZ 61.3475, 61.9550, 55.1795 is called "background". The background property can be set on classes, ids or directly on the HTML element.

```
.background, #background, body{  
background: rgb(226, 202, 186) }
```

If only the background color should be changed can be used:

```
.background{ background-color: rgb(226,  
202, 186) }
```

This example shows the color as background, it is applied via the CSS property "background".

To optimize and compress your CSS code, you can use our [online CSS compressor and optimizer](#) based on csstidy. If you want to create a linear or radial gradient as background or border, check our [CSS Gradient Generator](#).

Hey! You found this booklet interesting? Support Converting Colors with the new Membership Option!

The pro membership hides all ads, plus gives you double the colors in the color bucket, and more awesome pro features!

[Learn more, Memberships starting at \\$2.50/m!](#)

**Follow me
on Twitter!**

@ConvertingColor