

Converting Colors

XYZ(61.4798, 60.3445, 66.3050)

Have a look what the booklet for
XYZ(61.4798, 60.3445, 66.3050)
contains.

XYZ(61.3377, 60.3255, 66.1688)	3
<i>Conversions</i>	4
<i>Details</i>	6
<i>Harmonies</i>	12
<i>Previews</i>	24
<i>Color Blindness Simulation</i>	28
<i>CSS Examples</i>	31

Color

**XYZ(61.3377, 60.3255,
66.1688)**

Conversions

Conversions Part 1

Format	Color
Hex	DEC6CD
RGB	222, 198, 205
RGB Percent	87%, 78%, 80%
CMY	0.1294, 0.2235, 0.1961
CMYK	0.00, 0.11, 0.08, 0.13
HSL	343°, 27%, 82%
HSV	343°, 11%, 87%
XYZ	61.3377, 60.3255, 66.1688
YIQ	205.9740, 12.0570, 7.2650

Conversions

Conversions Part 2

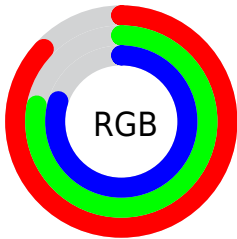
Format	Color
R _Y B	222, 198, 205
Decimal	14599885
CIE Lab	82.01, 9.60, -0.41
CIE LCh	82, 9.614, 357.529
Yxy	60.3255, 0.3266, 0.3212
Android (android.graphics.Color)	4292789965 (0xFFDEC6CD)
YUV	205.9740, -0.4802, 14.0548
Hunter-Lab	77.6695, 5.0447, 3.8578

Details

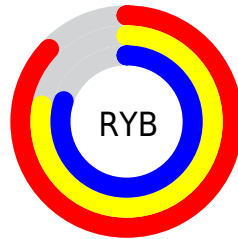
The XYZ color **61.3377, 60.3255, 66.1688** is a light color, and the websafe version is hex **CCCCCC**. A complement of this color would be **61.6780, 69.1561, 74.3909**, and the grayscale version is **58.6486, 61.7028, 67.1944**.

A 20% lighter version of the original color is **95.0500, 100.0000, 108.9000**, and **31.4955, 30.3964, 33.4852** is the 20% darker color. If you saturate the color by 10%, you get **54.8267, 50.1901, 55.0982**, and if you desaturate by 10%, it is **68.7867, 72.0300, 78.4951**.

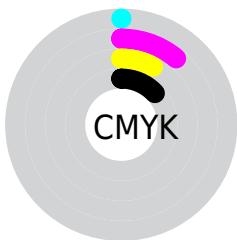
Distribution



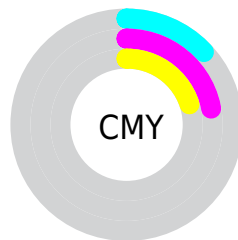
- Red (87%)
- Green (78%)
- Blue (80%)



- Red (87%)
- Yellow (78%)
- Blue (80%)



- Cyan (0%)
- Magenta (11%)
- Yellow (8%)
- Black (13%)



- Cyan (13%)
- Magenta (22%)
- Yellow (20%)

Brightness & Saturation Gradients

These gradients show how the XYZ color 61.3377, 60.3255, 66.1688 changes by changing the brightness by 10 percent. The first figure shows a shift by +10% for each color and the second figure -10%.

Similar to the brightness gradients but the following saturation gradients show a change of the XYZ color 61.3377, 60.3255, 66.1688 by changing the saturation by 10% instead.

61.3377, 60.3255,
66.1688

61.3377, 60.3255,
66.1688

419.2673,
425.7965, 465.4010

44.7513, 43.6810,
47.9521

105.8631,
105.3017, 115.3579

31.4620, 30.4198,
33.4292

134.5328,
134.4022, 147.1673

21.1045, 20.1575,
22.1817

167.9611,
168.4236, 184.3448

13.3133, 12.5096,
13.7909

206.5132,
207.7502, 227.3088

7.7231, 7.0917,
7.8383

250.5545,
252.7664, 276.4779

3.9686, 3.5195,
3.9053

300.4504,

1.6844, 1.4086,

303.8566, 332.2706

1.5736

356.5662,
361.4051, 395.1054

■ 0.4465, 0.2231,
0.2718

■ 0.0000, 0.0000,
0.0000

■ 61.3377, 60.3255,
66.1688

■ 61.3377, 60.3255,
66.1688

■ 54.8267, 50.1901,
55.0982

■ 68.7867, 72.0300,
78.4951

■ 49.2109, 41.5491,
45.2391

■ 77.2042, 85.3583,
92.1116

■ 44.4513, 34.3337,
36.5505

■ 83.4843, 94.0897,
106.0092

■ 40.5044, 28.4665,
28.9871

■ 83.9345, 94.2698,
108.3798

■ 37.3225, 23.8627,
22.5010

■ 34.8529, 20.4277,
17.0403

■ 33.0355, 18.0535,
12.5484

■ 31.7998, 16.6116,
8.9623

■ 31.0708, 15.9083,
6.3926

Harmonies

Analogous

The Analogous color harmony consists of three colors that are next to each other on the color wheel.



60.7036, 60.3255, 71.8883



61.3377, 60.3255, 66.1688



60.8791, 60.3255, 60.6381

Triad

The Triadic color harmony groups three colors that are evenly spaced from another and form a triangle on the color wheel.



61.3377, 60.3255, 66.1688



55.5474, 60.3255, 56.2365



55.2617, 60.3255, 75.6027

Complementary

The Complementary color scheme is a pair of colors which are on the opposite of each other on the color wheel.



61.3377, 60.3255, 66.1688



61.6780, 69.1561, 74.3909

Split Complementary

Split-complementary colors differ from the complementary color scheme. The scheme consists of three colors, the original color and two neighbors of the complement color.



53.9361, 60.3255, 71.0028



61.3377, 60.3255, 66.1688



54.0983, 60.3255, 59.8478

Square

The Square scheme is like the rectangle color scheme, but the four colors are evenly spaced on the color wheel.



61.3377, 60.3255, 66.1688



57.5065, 60.3255, 55.1092



53.5153, 60.3255, 65.2020



57.1690, 60.3255, 77.5323

Rectangle

The Rectangle color scheme consists of four colors that form a rectangle on the color wheel.



61.3377, 60.3255, 66.1688



60.0213, 60.3255, 57.7577



53.5153, 60.3255, 65.2020



54.7350, 60.3255, 74.3046

Sweetspot

The Sweet Spot groups the original color and five complimentary colors.



61.3394, 60.3282, 66.1701



91.7975, 94.8716, 103.5717



61.3465, 60.0817, 77.4716



19.4668, 20.0204, 21.8696



0.0000, 0.0000, 0.0000



20.3446, 21.4041, 23.3091

Same Dimension

The Same Dimension uses a secret algorithm to generate beautiful new colors.



61.3394, 60.3282, 66.1701



81.8182, 79.2216, 86.9624



61.6279, 62.2267, 62.1921



13.8708, 13.7659, 15.0898



18.4974, 9.4660, 4.0190



1.3204, 0.6714, 0.4800

Inverse Universe

The Inverse Universe completely reimagines the original color for something new.



61.3394, 60.3282, 66.1701



81.8182, 79.2216, 86.9624



61.3399, 67.0103, 78.8093



13.8708, 13.7659, 15.0898



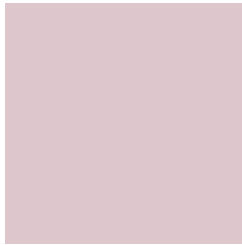
18.4974, 9.4660, 4.0190



1.3204, 0.6714, 0.4800

Previews

White Background



This preview shows how the XYZ color 61.3377, 60.3255, 66.1688 looks on a white background.

Color Contrast Check

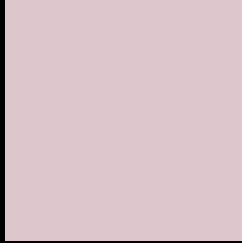
Large Text (above 18pt) WCAG AA × Fail

Any Text WCAG AA × Fail

Large Text (above 18pt) WCAG AAA × Fail

Any Text WCAG AAA × Fail

Black Background



This preview shows how the XYZ color 61.3377, 60.3255, 66.1688 looks on a black background.

Color Contrast Check

Large Text (above 18pt) WCAG AA ✓ Pass

Any Text WCAG AA ✓ Pass

Large Text (above 18pt) WCAG AAA ✓ Pass

Any Text WCAG AAA ✓ Pass

If you want to check with other color combinations, try the [Color Contrast Checker](#).

XYZ 61.3377, 60.3255, 66.1688

Background



This preview shows how black text looks on a background with the XYZ color 61.3377, 60.3255, 66.1688.



This preview shows how white text looks on a background with the XYZ color 61.3377, 60.3255,

Color Blindness Simulation

Color vision deficiency is a very complex topic, and I could not describe the different causes any better than Wikipedia does, so if you want to learn more, you should check out their [article about color blindness](#).

Dichromacy



Original Color

61.3377, 60.3255, 66.1688

Protanopia

58.1947, 60.3877, 68.2633

Deuteranopia

61.6450, 60.4839, 66.1831



Tritanopia

62.2813, 60.3739, 70.6581

Trichromacy



Original Color

61.3377, 60.3255, 66.1688

Protanomaly

59.3005, 60.2753, 67.5403

Deuteranomaly

61.6450, 60.4839, 66.1831

Tritanomaly

61.9063, 60.2239, 68.6832

Monochromacy



Original Color

61.3377, 60.3255, 66.1688

Achromatopsia

58.6655, 61.7207, 67.2138

Achromatomaly

59.6479, 61.1652, 67.0548

CSS Examples

Text

The CSS property to change the color of the text to XYZ 61.3377, 60.3255, 66.1688 is called "color". The color property can be set on classes, ids or directly on the HTML element.

This example shows how text in the color `rgb(222, 198, 205)` looks like.

```
.text, #text, p{  
    color:rgb(222, 198, 205)  
}
```

If you want to add a text shadow in that color use the text-shadow property, you can generate a text shadow directly with our [CSS Text Shadow Generator](#).

Here you see how black text with a 4 pixel rgb(222, 198, 205) colored shadow looks like.

```
.shadow{ text-shadow: 4px 4px 2px rgb(222, 198, 205) }
```

Border

The CSS property to change the border of an element to XYZ 61.3377, 60.3255, 66.1688 is called "border". The border property can be set on classes, ids or directly on the HTML element.

This example shows the color as border, it can be applied via the CSS property "border" or "border-color".

```
.border, #border, table{ border:4px solid rgb(222, 198, 205) }
```


If only the border color should be changed use the property border-color.

```
.border{ border-color:rgb(222, 198, 205) }
```

If you want to add a box shadow in that color use:

Here you see how a box with a 4 pixel rgb(222, 198, 205) colored shadow looks like.

```
.boxshadow{ -moz-box-shadow:4px 4px 4px  
4px rgb(222, 198, 205); -webkit-box-  
shadow:4px 4px 4px 4px rgb(222, 198, 205);  
box-shadow:4px 4px 4px 4px rgb(222, 198,  
205) }
```

Background

The CSS property to change the background color of an element to XYZ 61.3377, 60.3255, 66.1688 is called "background". The background property can be set on classes, ids or directly on the HTML element.

```
.background, #background, body{  
background: rgb(222, 198, 205) }
```

If only the background color should be changed can be used:

```
.background{ background-color: rgb(222,  
198, 205) }
```

This example shows the color as background, it is applied via the CSS property "background".

To optimize and compress your CSS code, you can use our [online CSS compressor and optimizer](#) based on csstidy. If you want to create a linear or radial gradient as background or border, check our [CSS Gradient Generator](#).

Hey! You found this booklet interesting? Support Converting Colors with the new Membership Option!

The pro membership hides all ads, plus gives you double the colors in the color bucket, and more awesome pro features!

[Learn more, Memberships starting at \\$2.50/m!](#)

**Follow me
on Twitter!**

@ConvertingColor