

Converting Colors

XYZ(61.4934, 60.1914, 60.1118)

Have a look what the booklet for
XYZ(61.4934, 60.1914, 60.1118)
contains.

XYZ(61.4951, 60.2035, 60.0091)	3
<i>Conversions</i>	4
<i>Details</i>	6
<i>Harmonies</i>	12
<i>Previews</i>	24
<i>Color Blindness Simulation</i>	28
<i>CSS Examples</i>	31

Color

**XYZ(61.4951, 60.2035,
60.0091)**

Conversions

Conversions Part 1

Format	Color
Hex	E3C5C3
RGB	227, 197, 195
RGB Percent	89%, 77%, 76%
CMY	0.1098, 0.2274, 0.2353
CMYK	0.00, 0.13, 0.14, 0.11
HSL	4°, 36%, 83%
HSV	4°, 14%, 89%
XYZ	61.4951, 60.2035, 60.0091
YIQ	205.7420, 18.5220, 5.7380

Conversions

Conversions Part 2

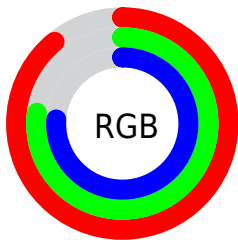
Format	Color
R _Y B	227, 197, 195
Decimal	14927299
CIE Lab	81.95, 10.26, 4.90
CIE LCh	82, 11.369, 25.532
Yxy	60.2035, 0.3384, 0.3313
Android (android.graphics.Color)	4293117379 (0xFFE3C5C3)
YUV	205.7420, -5.2958, 18.6433
Hunter-Lab	77.5909, 5.6870, 8.4585

Details

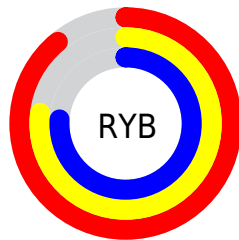
The XYZ color **61.4951, 60.2035, 60.0091** is a light color, and the websafe version is hex **FFCCCC**. A complement of this color would be **63.2956, 70.9971, 83.0413**, and the grayscale version is **58.5271, 61.5751, 67.0552**.

A 20% lighter version of the original color is **94.2525, 99.1719, 106.2699**, and **31.4248, 30.2259, 29.3772** is the 20% darker color. If you saturate the color by 10%, you get **54.6260, 50.2649, 46.0047**, and if you desaturate by 10%, it is **69.4397, 71.6675, 76.2984**.

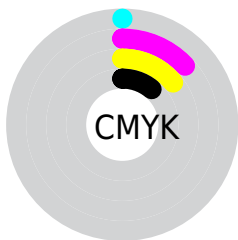
Distribution



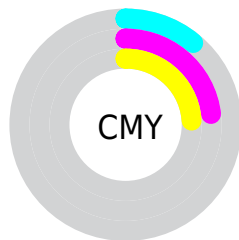
- Red (89%)
- Green (77%)
- Blue (76%)



- Red (89%)
- Yellow (77%)
- Blue (76%)



- Cyan (0%)
- Magenta (13%)
- Yellow (14%)
- Black (11%)



- Cyan (11%)
- Magenta (23%)
- Yellow (24%)

Brightness & Saturation Gradients

These gradients show how the XYZ color 61.4951, 60.2035, 60.0091 changes by changing the brightness by 10 percent. The first figure shows a shift by +10% for each color and the second figure -10%.

Similar to the brightness gradients but the following saturation gradients show a change of the XYZ color 61.4951, 60.2035, 60.0091 by changing the saturation by 10% instead.

61.4951, 60.2035,
60.0091

61.4951, 60.2035,
60.0091

419.8340,
425.3475, 442.4369

44.8789, 43.5827,
43.0006

106.0895,
105.1248, 106.3864

31.5629, 30.3426,
29.5542

134.7985,
134.1941, 136.5922

21.1818, 20.0987,
19.2513

168.2691,
168.1817, 172.0343

13.3702, 12.4668,
11.6733

206.8667,
207.4719, 213.1312

7.7627, 7.0625,
6.4018

250.9566,
252.4492, 260.3013

3.9940, 3.5012,
3.0182

300.9042,

1.6987, 1.3987,

303.4980, 313.9633

1.1039

357.0749,
361.0026, 374.5356

■ 0.4555, 0.2157,
0.0000

■ 0.0000, 0.0000,
0.0000

■ 61.4951, 60.2035,
60.0091

■ 61.4951, 60.2035,
60.0091

■ 54.6260, 50.2649,
46.0047

■ 69.4397, 71.6675,
76.2984

■ 48.7815, 41.7797,
34.1794

■ 78.4981, 84.7090,
94.9644

■ 43.9139, 34.6824,
24.4248

■ 85.4888, 95.0710,
108.4525

■ 39.9699, 28.8990,
16.6218

■ 36.8909, 24.3488,
10.6389

■ 34.6118, 20.9422,
6.3287

■ 33.0580, 18.5775,
3.5206

■ 32.1409, 17.1348,
2.0078

■ 31.8387, 16.6509,
1.5359

Harmonies

Analogous

The Analogous color harmony consists of three colors that are next to each other on the color wheel.



61.9551, 60.2035, 66.5882



61.4951, 60.2035, 60.0091



59.8779, 60.2035, 55.2311

Triad

The Triadic color harmony groups three colors that are evenly spaced from another and form a triangle on the color wheel.



61.4951, 60.2035, 60.0091



53.4944, 60.2035, 58.3406



56.8622, 60.2035, 79.6560

Complementary

The Complementary color scheme is a pair of colors which are on the opposite of each other on the color wheel.



61.4951, 60.2035, 60.0091



63.2956, 70.9971, 83.0413

Split Complementary

Split-complementary colors differ from the complementary color scheme. The scheme consists of three colors, the original color and two neighbors of the complement color.



54.6451, 60.2035, 77.0833



61.4951, 60.2035, 60.0091



52.7356, 60.2035, 64.5254

Square

The Square scheme is like the rectangle color scheme, but the four colors are evenly spaced on the color wheel.



61.4951, 60.2035, 60.0091



55.2522, 60.2035, 54.3161



53.1509, 60.2035, 71.4248



59.2373, 60.2035, 78.2381

Rectangle

The Rectangle color scheme consists of four colors that form a rectangle on the color wheel.



61.4951, 60.2035, 60.0091



58.3844, 60.2035, 53.5496



53.1509, 60.2035, 71.4248



56.0744, 60.2035, 79.2245

Sweetspot

The Sweet Spot groups the original color and five complimentary colors.



61.4968, 60.2062, 60.0104



90.4762, 93.4110, 99.4877



64.8396, 60.8200, 79.8432



19.1872, 19.7366, 20.9276



0.0000, 0.0000, 0.0000



20.3446, 21.4041, 23.3091

Same Dimension

The Same Dimension uses a secret algorithm to generate beautiful new colors.



61.4968, 60.2062, 60.0104



77.2185, 74.2738, 72.3225



65.2233, 67.6593, 61.2525



14.4491, 14.5121, 14.9440



18.5968, 9.7677, 0.9052



1.3999, 0.7731, 0.0754

Inverse Universe

The Inverse Universe completely reimagines the original color for something new.



63.2956, 70.9971, 83.0413



80.0006, 90.9652, 107.9493



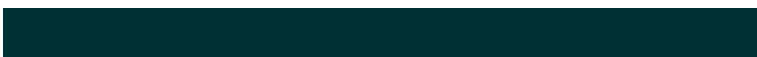
59.2703, 62.9464, 81.6996



14.7261, 16.1736, 18.4900



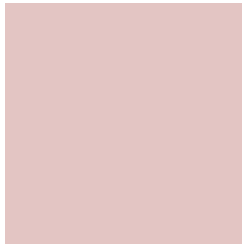
21.9639, 30.9898, 47.2072



1.6466, 2.3371, 3.4963

Previews

White Background



This preview shows how the XYZ color 61.4951, 60.2035, 60.0091 looks on a white background.

Color Contrast Check

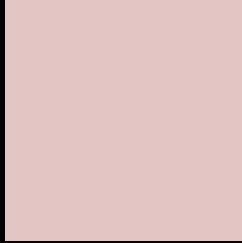
Large Text (above 18pt) WCAG AA × Fail

Any Text WCAG AA × Fail

Large Text (above 18pt) WCAG AAA × Fail

Any Text WCAG AAA × Fail

Black Background



This preview shows how the XYZ color 61.4951, 60.2035, 60.0091 looks on a black background.

Color Contrast Check

Large Text (above 18pt) WCAG AA ✓ Pass

Any Text WCAG AA ✓ Pass

Large Text (above 18pt) WCAG AAA ✓ Pass

Any Text WCAG AAA ✓ Pass

If you want to check with other color combinations, try the [Color Contrast Checker](#).

XYZ 61.4951, 60.2035, 60.0091

Background



This preview shows how black text looks on a background with the XYZ color 61.4951, 60.2035, 60.0091.



This preview shows how white text looks on a background with the XYZ color 61.4951, 60.2035,

Color Blindness Simulation

Color vision deficiency is a very complex topic, and I could not describe the different causes any better than Wikipedia does, so if you want to learn more, you should check out their [article about color blindness](#).

Dichromacy



Original Color

61.4951, 60.2035, 60.0091

Protanopia

57.8435, 60.3444, 62.0250

Deuteranopia

61.4951, 60.2035, 60.0091



Tritanopia

63.4611, 60.3414, 69.2751

Trichromacy



Original Color

61.4951, 60.2035, 60.0091

Protanomaly

59.2836, 60.4034, 61.3578

Deuteranomaly

61.4951, 60.2035, 60.0091

Tritanomaly

62.7543, 60.3816, 66.1049

Monochromacy



Original Color

61.4951, 60.2035, 60.0091

Achromatopsia

58.6655, 61.7207, 67.2138

Achromatomaly

59.7482, 61.2723, 64.5548

CSS Examples

Text

The CSS property to change the color of the text to XYZ 61.4951, 60.2035, 60.0091 is called "color". The color property can be set on classes, ids or directly on the HTML element.

This example shows how text in the color `rgb(227, 197, 195)` looks like.

```
.text, #text, p{  
    color:rgb(227, 197, 195)  
}
```

If you want to add a text shadow in that color use the text-shadow property, you can generate a text shadow directly with our [CSS Text Shadow Generator](#).

Here you see how black text with a 4 pixel rgb(227, 197, 195) colored shadow looks like.

```
.shadow{ text-shadow: 4px 4px 2px rgb(227, 197, 195) }
```

Border

The CSS property to change the border of an element to XYZ 61.4951, 60.2035, 60.0091 is called "border". The border property can be set on classes, ids or directly on the HTML element.

This example shows the color as border, it can be applied via the CSS property "border" or "border-color".

```
.border, #border, table{ border:4px solid rgb(227, 197, 195) }
```


If only the border color should be changed use the property `border-color`.

```
.border{ border-color:rgb(227, 197, 195) }
```

If you want to add a box shadow in that color use:

Here you see how a box with a 4 pixel `rgb(227, 197, 195)` colored shadow looks like.

```
.boxshadow{ -moz-box-shadow:4px 4px 4px  
4px rgb(227, 197, 195); -webkit-box-  
shadow:4px 4px 4px 4px rgb(227, 197, 195);  
box-shadow:4px 4px 4px 4px rgb(227, 197,  
195) }
```

Background

The CSS property to change the background color of an element to XYZ 61.4951, 60.2035, 60.0091 is called "background". The background property can be set on classes, ids or directly on the HTML element.

```
.background, #background, body{  
background: rgb(227, 197, 195) }
```

If only the background color should be changed can be used:

```
.background{ background-color: rgb(227,  
197, 195) }
```

This example shows the color as background, it is applied via the CSS property "background".

To optimize and compress your CSS code, you can use our [online CSS compressor and optimizer](#) based on csstidy. If you want to create a linear or radial gradient as background or border, check our [CSS Gradient Generator](#).

Hey! You found this booklet interesting? Support Converting Colors with the new Membership Option!

The pro membership hides all ads, plus gives you double the colors in the color bucket, and more awesome pro features!

[Learn more, Memberships starting at \\$2.50/m!](#)

**Follow me
on Twitter!**

@ConvertingColor