

Converting Colors

XYZ(61.5158, 60.7254, 67.4151)

Have a look what the booklet for
XYZ(61.5158, 60.7254, 67.4151)
contains.

XYZ(61.5047, 60.7240, 67.5107)	3
<i>Conversions</i>	4
<i>Details</i>	6
<i>Harmonies</i>	12
<i>Previews</i>	24
<i>Color Blindness Simulation</i>	28
<i>CSS Examples</i>	31

Color

**XYZ(61.5047, 60.7240,
67.5107)**

Conversions

Conversions Part 1

Format	Color
Hex	DDC7CF
RGB	221, 199, 207
RGB Percent	87%, 78%, 81%
CMY	0.1333, 0.2196, 0.1882
CMYK	0.00, 0.10, 0.06, 0.13
HSL	338°, 24%, 82%
HSV	338°, 10%, 87%
XYZ	61.5047, 60.7240, 67.5107
YIQ	206.4900, 10.5440, 7.1520

Conversions

Conversions Part 2

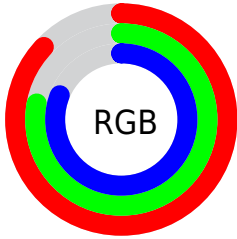
Format	Color
R _Y B	221, 199, 207
Decimal	14534607
CIE Lab	82.23, 9.07, -1.18
CIE LCh	82, 9.145, 352.581
Yxy	60.7240, 0.3242, 0.3200
Android (android.graphics.Color)	4292724687 (0xFFDDC7CF)
YUV	206.4900, 0.2514, 12.7253
Hunter-Lab	77.9256, 4.5157, 3.1821

Details

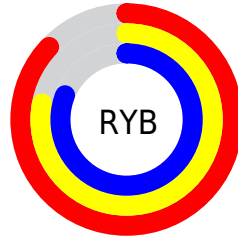
The XYZ color **61.5047, 60.7240, 67.5107** is a light color, and the websafe version is hex **CCCCCC**. A complement of this color would be **61.4222, 68.6607, 72.9697**, and the grayscale version is **58.9754, 62.0467, 67.5689**.

A 20% lighter version of the original color is **95.0500, 100.0000, 108.9000**, and **31.6011, 30.6577, 34.3890** is the 20% darker color. If you saturate the color by 10%, you get **55.1410, 50.6265, 57.2798**, and if you desaturate by 10%, it is **68.7636, 72.3650, 78.7974**.

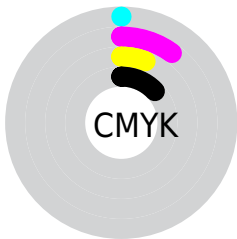
Distribution



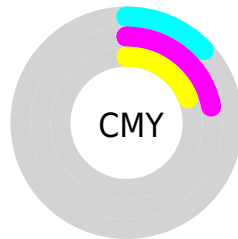
- Red (87%)
- Green (78%)
- Blue (81%)



- Red (87%)
- Yellow (78%)
- Blue (81%)



- Cyan (0%)
- Magenta (10%)
- Yellow (6%)
- Black (13%)



- Cyan (13%)
- Magenta (22%)
- Yellow (19%)

Brightness & Saturation Gradients

These gradients show how the XYZ color 61.5047, 60.7240, 67.5107 changes by changing the brightness by 10 percent. The first figure shows a shift by +10% for each color and the second figure -10%.

Similar to the brightness gradients but the following saturation gradients show a change of the XYZ color 61.5047, 60.7240, 67.5107 by changing the saturation by 10% instead.

61.5047, 60.7240,
67.5107

61.5047, 60.7240,
67.5107

419.8685,
427.2613, 470.3113

44.8867, 44.0025,
49.0356

106.1033,
105.8792, 117.2995

31.5691, 30.6724,
34.2819

134.8147,
135.0817, 149.4502

21.1865, 20.3496,
22.8311

168.2879,
169.2132, 186.9965

13.3736, 12.6494,
14.2647

206.8882,
208.6583, 230.3570

7.7651, 7.1876,
8.1642

250.9811,
253.8012, 279.9502

3.9956, 3.5797,
4.1109

300.9319,

1.6996, 1.4413,

305.0264, 336.1946

1.6864

357.1059,
362.7183, 399.5088

■ 0.4560, 0.2469,
0.3514

■ 0.0000, 0.0000,
0.0000

■ 61.5047, 60.7240,
67.5107

■ 61.5047, 60.7240,
67.5107

■ 55.1410, 50.6265,
57.2798

■ 68.7636, 72.3650,
78.7974

■ 49.6315, 41.9995,
48.0692

■ 76.9460, 85.6025,
91.1660

■ 44.9399, 34.7761,
39.8471

■ 82.7092, 93.7444,
103.5213

■ 41.0251, 28.8810,
32.5784

■ 83.6291, 94.1123,
108.3655

■ 37.8422, 24.2316,
26.2258

■ 35.3415, 20.7364,
20.7491

■ 33.4667, 18.2907,
16.1045

■ 32.1516, 16.7706,
12.2435

■ 31.2833, 15.9598,
9.1000

Harmonies

Analogous

The Analogous color harmony consists of three colors that are next to each other on the color wheel.



60.7377, 60.7240, 72.8419



61.5047, 60.7240, 67.5107



61.2386, 60.7240, 62.0902

Triad

The Triadic color harmony groups three colors that are evenly spaced from another and form a triangle on the color wheel.



61.5047, 60.7240, 67.5107



56.2922, 60.7240, 56.7139



55.4737, 60.7240, 74.9943

Complementary

The Complementary color scheme is a pair of colors which are on the opposite of each other on the color wheel.



61.5047, 60.7240, 67.5107



61.4222, 68.6607, 72.9697

Split Complementary

Split-complementary colors differ from the complementary color scheme. The scheme consists of three colors, the original color and two neighbors of the complement color.



54.3318, 60.7240, 70.3166



61.5047, 60.7240, 67.5107



54.7969, 60.7240, 59.8214

Square

The Square scheme is like the rectangle color scheme, but the four colors are evenly spaced on the color wheel.



61.5047, 60.7240, 67.5107



58.2006, 60.7240, 56.0561



54.0868, 60.7240, 64.7448



57.2348, 60.7240, 77.3174

Rectangle

The Rectangle color scheme consists of four colors that form a rectangle on the color wheel.



61.5047, 60.7240, 67.5107



60.5140, 60.7240, 59.1328



54.0868, 60.7240, 64.7448



55.0063, 60.7240, 73.6329

Sweetspot

The Sweet Spot groups the original color and five complimentary colors.



61.5064, 60.7267, 67.5120



91.8838, 94.9061, 104.0261



60.8979, 60.2064, 76.8187



19.4900, 20.0297, 21.9920



0.0000, 0.0000, 0.0000



20.3446, 21.4041, 23.3091

Same Dimension

The Same Dimension uses a secret algorithm to generate beautiful new colors.



61.5064, 60.7267, 67.5120



83.0745, 80.8151, 90.2150



61.2346, 61.7081, 62.7195



13.2507, 13.1294, 14.5814



18.2204, 9.2892, 5.5405



1.2209, 0.6180, 0.5725

Inverse Universe

The Inverse Universe completely reimagines the original color for something new.



61.5064, 60.7267, 67.5120



83.0745, 80.8151, 90.2150



61.6950, 67.5416, 78.1926



13.2507, 13.1294, 14.5814



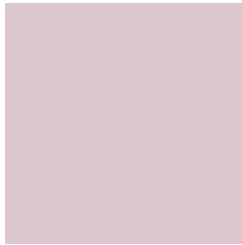
18.2204, 9.2892, 5.5405



1.2209, 0.6180, 0.5725

Previews

White Background



This preview shows how the XYZ color 61.5047, 60.7240, 67.5107 looks on a white background.

Color Contrast Check

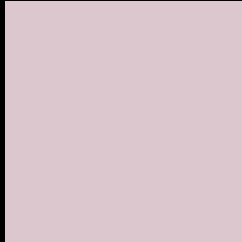
Large Text (above 18pt) WCAG AA × Fail

Any Text WCAG AA × Fail

Large Text (above 18pt) WCAG AAA × Fail

Any Text WCAG AAA × Fail

Black Background



This preview shows how the XYZ color 61.5047, 60.7240, 67.5107 looks on a black background.

Color Contrast Check

Large Text (above 18pt) WCAG AA ✓ Pass

Any Text WCAG AA ✓ Pass

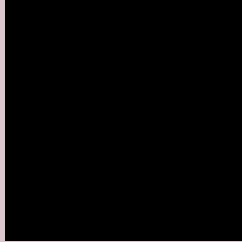
Large Text (above 18pt) WCAG AAA ✓ Pass

Any Text WCAG AAA ✓ Pass

If you want to check with other color combinations, try the [Color Contrast Checker](#).

XYZ 61.5047, 60.7240, 67.5107

Background



This preview shows how black text looks on a background with the XYZ color 61.5047, 60.7240, 67.5107.



This preview shows how white text looks on a background with the XYZ color 61.5047, 60.7240,

Color Blindness Simulation

Color vision deficiency is a very complex topic, and I could not describe the different causes any better than Wikipedia does, so if you want to learn more, you should check out their [article about color blindness](#).

Dichromacy



Original Color

61.5047, 60.7240, 67.5107

Protanopia

58.9579, 61.1043, 69.6597

Deuteranopia

61.8880, 60.5811, 67.4630



Tritanopia

62.3285, 60.7219, 71.3862

Trichromacy



Original Color

61.5047, 60.7240, 67.5107

Protanomaly

59.7805, 60.8416, 68.9144

Deuteranomaly

61.5808, 60.4228, 67.4486

Tritanomaly

62.0762, 60.6209, 70.0573

Monochromacy



Original Color

61.5047, 60.7240, 67.5107

Achromatopsia

58.6655, 61.7207, 67.2138

Achromatomaly

59.3605, 61.0170, 67.0413

CSS Examples

Text

The CSS property to change the color of the text to XYZ 61.5047, 60.7240, 67.5107 is called "color". The color property can be set on classes, ids or directly on the HTML element.

This example shows how text in the color `rgb(221, 199, 207)` looks like.

```
.text, #text, p{  
    color:rgb(221, 199, 207)  
}
```

If you want to add a text shadow in that color use the text-shadow property, you can generate a text shadow directly with our [CSS Text Shadow Generator](#).

Here you see how black text with a 4 pixel rgb(221, 199, 207) colored shadow looks like.

```
.shadow{ text-shadow: 4px 4px 2px rgb(221, 199, 207) }
```

Border

The CSS property to change the border of an element to XYZ 61.5047, 60.7240, 67.5107 is called "border". The border property can be set on classes, ids or directly on the HTML element.

This example shows the color as border, it can be applied via the CSS property "border" or "border-color".

```
.border, #border, table{ border:4px solid rgb(221, 199, 207) }
```


If only the border color should be changed use the property border-color.

```
.border{ border-color:rgb(221, 199, 207) }
```

If you want to add a box shadow in that color use:

Here you see how a box with a 4 pixel rgb(221, 199, 207) colored shadow looks like.

```
.boxshadow{ -moz-box-shadow:4px 4px 4px  
4px rgb(221, 199, 207); -webkit-box-  
shadow:4px 4px 4px 4px rgb(221, 199, 207);  
box-shadow:4px 4px 4px 4px rgb(221, 199,  
207) }
```

Background

The CSS property to change the background color of an element to XYZ 61.5047, 60.7240, 67.5107 is called "background". The background property can be set on classes, ids or directly on the HTML element.

```
.background, #background, body{  
background: rgb(221, 199, 207) }
```

If only the background color should be changed can be used:

```
.background{ background-color: rgb(221,  
199, 207) }
```

This example shows the color as background, it is applied via the CSS property "background".

To optimize and compress your CSS code, you can use our [online CSS compressor and optimizer](#) based on csstidy. If you want to create a linear or radial gradient as background or border, check our [CSS Gradient Generator](#).

Hey! You found this booklet interesting? Support Converting Colors with the new Membership Option!

The pro membership hides all ads, plus gives you double the colors in the color bucket, and more awesome pro features!

[Learn more, Memberships starting at \\$2.50/m!](#)

**Follow me
on Twitter!**

@ConvertingColor