

Converting Colors

XYZ(61.5290, 61.1544, 63.2428)

Have a look what the booklet for
XYZ(61.5290, 61.1544, 63.2428)
contains.

XYZ(61.5110, 61.1667, 63.2079)	3
<i>Conversions</i>	4
<i>Details</i>	6
<i>Harmonies</i>	12
<i>Previews</i>	24
<i>Color Blindness Simulation</i>	28
<i>CSS Examples</i>	31

Color

**XYZ(61.5110, 61.1667,
63.2079)**

Conversions

Conversions Part 1

Format	Color
Hex	DFC8C8
RGB	223, 200, 200
RGB Percent	87%, 78%, 78%
CMY	0.1255, 0.2157, 0.2157
CMYK	0.00, 0.10, 0.10, 0.13
HSL	0°, 26%, 83%
HSV	0°, 10%, 87%
XYZ	61.5110, 61.1667, 63.2079
YIQ	206.8770, 13.7080, 4.8760

Conversions

Conversions Part 2

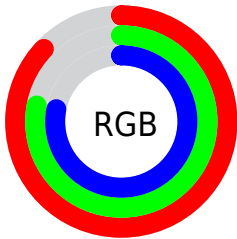
Format	Color
R _Y B	223, 200, 200
Decimal	14665928
CIE Lab	82.47, 8.06, 2.93
CIE LCh	82, 8.574, 20.003
Yxy	61.1667, 0.3309, 0.3291
Android (android.graphics.Color)	4292856008 (0xFFDFC8C8)
YUV	206.8770, -3.3904, 14.1399
Hunter-Lab	78.2091, 3.5231, 6.8288

Details

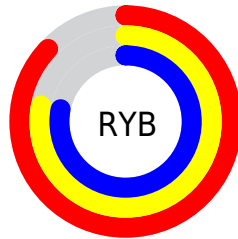
The XYZ color **61.5110, 61.1667, 63.2079** is a light color, and the websafe version is hex **CCCCCC**. A complement of this color would be **63.5259, 70.3808, 80.0493**, and the grayscale version is **59.2454, 62.3308, 67.8782**.

A 20% lighter version of the original color is **95.0500, 100.0000, 108.9000**, and **31.6156, 30.9579, 31.5033** is the 20% darker color. If you saturate the color by 10%, you get **54.3002, 50.6158, 48.8703**, and if you desaturate by 10%, it is **69.8584, 73.3811, 79.8013**.

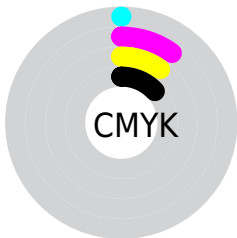
Distribution



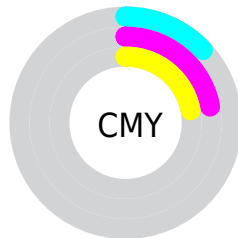
- Red (87%)
- Green (78%)
- Blue (78%)



- Red (87%)
- Yellow (78%)
- Blue (78%)



- Cyan (0%)
- Magenta (10%)
- Yellow (10%)
- Black (13%)



- Cyan (13%)
- Magenta (22%)
- Yellow (22%)

Brightness & Saturation Gradients

These gradients show how the XYZ color 61.5110, 61.1667, 63.2079 changes by changing the brightness by 10 percent. The first figure shows a shift by +10% for each color and the second figure -10%.

Similar to the brightness gradients but the following saturation gradients show a change of the XYZ color 61.5110, 61.1667, 63.2079 by changing the saturation by 10% instead.

61.5110, 61.1667,
63.2079

61.5110, 61.1667,
63.2079

419.8912,
428.8850, 454.4523

44.8918, 44.3597,
45.5673

106.1124,
106.5203, 111.0579

31.5731, 30.9534,
31.5583

134.8253,
135.8356, 142.1043

21.1896, 20.5634,
20.7624

168.3002,
170.0893, 178.4565

13.3759, 12.8052,
12.7609

206.9024,
209.6655, 220.5330

7.7667, 7.2946,
7.1353

250.9972,
254.9488, 268.7523

3.9966, 3.6470,
3.4671

300.9500,

1.7002, 1.4781,

306.3236, 323.5329

1.3378

357.1262,
364.1742, 385.2934

■ 0.4564, 0.2733,
0.0925

■ 0.0000, 0.0000,
0.0000

■ 61.5110, 61.1667,
63.2079

■ 61.5110, 61.1667,
63.2079

■ 54.3002, 50.6158,
48.8703

■ 69.8584, 73.3811,
79.8013

■ 48.1721, 41.6487,
36.6873

■ 79.3831, 87.3179,
98.7377

■ 43.0759, 34.1916,
26.5562

■ 84.2417, 94.4281,
108.3942

■ 38.9549, 28.1614,
18.3641

■ 35.7470, 23.4670,
11.9872

■ 33.3826, 20.0071,
7.2877

■ 31.7826, 17.6656,
4.1078

■ 30.8527, 16.3046,
2.2600

■ 30.4321, 15.6890,
1.4243

Harmonies

Analogous

The Analogous color harmony consists of three colors that are next to each other on the color wheel.



61.6763, 61.1667, 68.3672



61.5110, 61.1667, 63.2079



60.4312, 61.1667, 59.1655

Triad

The Triadic color harmony groups three colors that are evenly spaced from another and form a triangle on the color wheel.



61.5110, 61.1667, 63.2079



55.4796, 61.1667, 60.3230



57.5276, 61.1667, 77.0395

Complementary

The Complementary color scheme is a pair of colors which are on the opposite of each other on the color wheel.



61.5110, 61.1667, 63.2079



63.5259, 70.3808, 80.0493

Split Complementary

Split-complementary colors differ from the complementary color scheme. The scheme consists of three colors, the original color and two neighbors of the complement color.



55.9019, 61.1667, 74.6329



61.5110, 61.1667, 63.2079



54.7360, 61.1667, 64.8638

Square

The Square scheme is like the rectangle color scheme, but the four colors are evenly spaced on the color wheel.



61.5110, 61.1667, 63.2079



56.9403, 61.1667, 57.5615



54.8889, 61.1667, 70.1116



59.3506, 61.1667, 76.5386

Rectangle

The Rectangle color scheme consists of four colors that form a rectangle on the color wheel.



61.5110, 61.1667, 63.2079



59.3503, 61.1667, 57.5612



54.8889, 61.1667, 70.1116



56.9406, 61.1667, 76.5390

Sweetspot

The Sweet Spot groups the original color and five complimentary colors.



61.5127, 61.1694, 63.2092



91.4509, 94.7337, 101.7446



64.4056, 62.3250, 78.4480



19.3736, 19.9833, 21.3786



0.0000, 0.0000, 0.0000



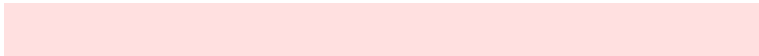
20.3446, 21.4041, 23.3091

Same Dimension

The Same Dimension uses a secret algorithm to generate beautiful new colors.



61.5127, 61.1694, 63.2092



81.5137, 80.1931, 81.9884



64.2761, 66.6962, 64.1303



13.7075, 13.7009, 14.2289



17.8935, 9.2250, 0.8375



1.2404, 0.6396, 0.0581

Inverse Universe

The Inverse Universe completely reimagines the original color for something new.



63.5259, 70.3808, 80.0493



84.6728, 94.6477, 108.4138



60.5581, 64.4452, 79.0600



14.1164, 15.5719, 17.6494



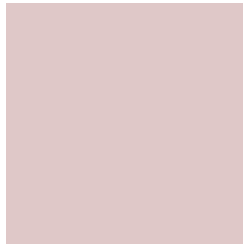
23.3408, 34.1511, 46.4100



1.6179, 2.3673, 3.2169

Previews

White Background



This preview shows how the XYZ color 61.5110, 61.1667, 63.2079 looks on a white background.

Color Contrast Check

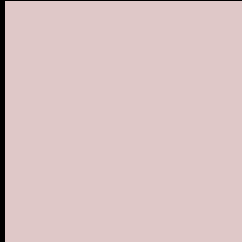
Large Text (above 18pt) WCAG AA × Fail

Any Text WCAG AA × Fail

Large Text (above 18pt) WCAG AAA × Fail

Any Text WCAG AAA × Fail

Black Background



This preview shows how the XYZ color 61.5110, 61.1667, 63.2079 looks on a black background.

Color Contrast Check

Large Text (above 18pt) WCAG AA ✓ Pass

Any Text WCAG AA ✓ Pass

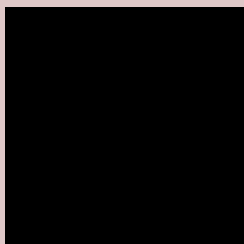
Large Text (above 18pt) WCAG AAA ✓ Pass

Any Text WCAG AAA ✓ Pass

If you want to check with other color combinations, try the [Color Contrast Checker](#).

XYZ 61.5110, 61.1667, 63.2079

Background



This preview shows how black text looks on a background with the XYZ color 61.5110, 61.1667, 63.2079.



This preview shows how white text looks on a background with the XYZ color 61.5110, 61.1667,

Color Blindness Simulation

Color vision deficiency is a very complex topic, and I could not describe the different causes any better than Wikipedia does, so if you want to learn more, you should check out their [article about color blindness](#).

Dichromacy



Original Color

61.5110, 61.1667, 63.2079

Protanopia

58.8319, 61.1516, 64.5798

Deuteranopia

62.5273, 61.3479, 63.1894



Tritanopia

63.2557, 61.1998, 71.4296

Trichromacy



Original Color

61.5110, 61.1667, 63.2079

Protanomaly

59.9229, 61.3760, 63.9468

Deuteranomaly

62.2128, 61.1857, 63.1746

Tritanomaly

62.5491, 61.2482, 68.1999

Monochromacy



Original Color

61.5110, 61.1667, 63.2079

Achromatopsia

59.3074, 62.3960, 67.9493

Achromatomaly

59.9325, 61.6915, 65.8756

CSS Examples

Text

The CSS property to change the color of the text to XYZ 61.5110, 61.1667, 63.2079 is called "color". The color property can be set on classes, ids or directly on the HTML element.

This example shows how text in the color `rgb(223, 200, 200)` looks like.

```
.text, #text, p{  
    color:rgb(223, 200, 200)  
}
```

If you want to add a text shadow in that color use the text-shadow property, you can generate a text shadow directly with our [CSS Text Shadow Generator](#).

Here you see how black text with a 4 pixel rgb(223, 200, 200) colored shadow looks like.

```
.shadow{ text-shadow: 4px 4px 2px rgb(223, 200, 200) }
```

Border

The CSS property to change the border of an element to XYZ 61.5110, 61.1667, 63.2079 is called "border". The border property can be set on classes, ids or directly on the HTML element.

This example shows the color as border, it can be applied via the CSS property "border" or "border-color".

```
.border, #border, table{ border:4px solid rgb(223, 200, 200) }
```


If only the border color should be changed use the property `border-color`.

```
.border{ border-color:rgb(223, 200, 200) }
```

If you want to add a box shadow in that color use:

Here you see how a box with a 4 pixel `rgb(223, 200, 200)` colored shadow looks like.

```
.boxshadow{ -moz-box-shadow:4px 4px 4px  
4px rgb(223, 200, 200); -webkit-box-  
shadow:4px 4px 4px 4px rgb(223, 200, 200);  
box-shadow:4px 4px 4px 4px rgb(223, 200,  
200) }
```

Background

The CSS property to change the background color of an element to XYZ 61.5110, 61.1667, 63.2079 is called "background". The background property can be set on classes, ids or directly on the HTML element.

```
.background, #background, body{  
background: rgb(223, 200, 200) }
```

If only the background color should be changed can be used:

```
.background{ background-color: rgb(223,  
200, 200) }
```

This example shows the color as background, it is applied via the CSS property "background".

To optimize and compress your CSS code, you can use our [online CSS compressor and optimizer](#) based on csstidy. If you want to create a linear or radial gradient as background or border, check our [CSS Gradient Generator](#).

Hey! You found this booklet interesting? Support Converting Colors with the new Membership Option!

The pro membership hides all ads, plus gives you double the colors in the color bucket, and more awesome pro features!

[Learn more, Memberships starting at \\$2.50/m!](#)

**Follow me
on Twitter!**

@ConvertingColor