

Converting Colors

XYZ(61.6477, 60.6826, 56.4379)

Have a look what the booklet for
XYZ(61.6477, 60.6826, 56.4379)
contains.

XYZ(61.6925, 60.7203, 56.6128)	3
<i>Conversions</i>	4
<i>Details</i>	6
<i>Harmonies</i>	12
<i>Previews</i>	24
<i>Color Blindness Simulation</i>	28
<i>CSS Examples</i>	31

Color

**XYZ(61.6925, 60.7203,
56.6128)**

Conversions

Conversions Part 1

Format	Color
Hex	E5C6BD
RGB	229, 198, 189
RGB Percent	90%, 78%, 74%
CMY	0.1020, 0.2235, 0.2588
CMYK	0.00, 0.14, 0.17, 0.10
HSL	14°, 43%, 82%
HSV	14°, 17%, 90%
XYZ	61.6925, 60.7203, 56.6128
YIQ	206.2430, 21.3650, 3.7730

Conversions

Conversions Part 2

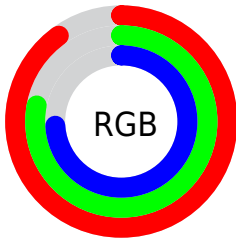
Format	Color
R _Y B	229, 201, 189
Decimal	15058621
CIE Lab	82.23, 9.52, 8.54
CIE LCh	82, 12.784, 41.891
Yxy	60.7203, 0.3446, 0.3392
Android (android.graphics.Color)	4293248701 (0xFFE5C6BD)
YUV	206.2430, -8.5008, 19.9579
Hunter-Lab	77.9232, 4.9543, 11.4709

Details

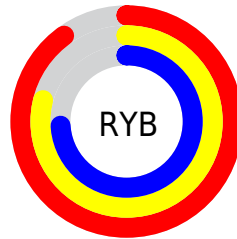
The XYZ color **61.6925, 60.7203, 56.6128** is a light color, and the websafe version is hex **FFCCCC**. A complement of this color would be **60.7219, 67.6609, 83.9887**, and the grayscale version is **58.8664, 61.9320, 67.4440**.

A 20% lighter version of the original color is **93.4814, 99.3726, 100.6400**, and **31.6508, 30.6083, 27.5324** is the 20% darker color. If you saturate the color by 10%, you get **55.5795, 52.1628, 43.2643**, and if you desaturate by 10%, it is **68.6766, 70.3907, 72.1894**.

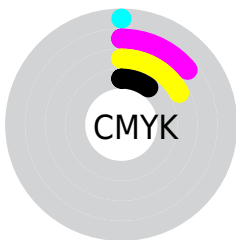
Distribution



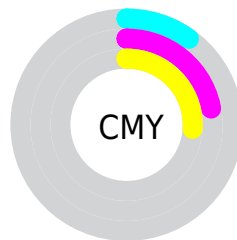
- Red (90%)
- Green (78%)
- Blue (74%)



- Red (90%)
- Yellow (79%)
- Blue (74%)



- Cyan (0%)
- Magenta (14%)
- Yellow (17%)
- Black (10%)



- Cyan (10%)
- Magenta (22%)
- Yellow (26%)

Brightness & Saturation Gradients

These gradients show how the XYZ color 61.6925, 60.7203, 56.6128 changes by changing the brightness by 10 percent. The first figure shows a shift by +10% for each color and the second figure -10%.

Similar to the brightness gradients but the following saturation gradients show a change of the XYZ color 61.6925, 60.7203, 56.6128 by changing the saturation by 10% instead.

61.6925, 60.7203,
56.6128

61.6925, 60.7203,
56.6128

420.5440,
427.2477, 429.4499

45.0389, 43.9995,
40.2872

106.3734,
105.8738, 101.3947

31.6895, 30.6701,
27.4470

135.1315,
135.0754, 130.6881

21.2788, 20.3478,
17.6738

168.6551,
169.2059, 165.1411

13.4416, 12.6481,
10.5491

207.3097,
208.6499, 205.1723

7.8124, 7.1867,
5.6542

251.4605,
253.7916, 251.2002

4.0259, 3.5791,
2.5706

301.4729,

1.7168, 1.4410,

305.0156, 303.6434

0.8772

357.7123,
362.7062, 362.9205

■ 0.4668, 0.2467,
0.0000

■ 0.0000, 0.0000,
0.0000

■ 61.6925, 60.7203,
56.6128

■ 61.6925, 60.7203,
56.6128

■ 55.5795, 52.1628,
43.2643

■ 68.6766, 70.3907,
72.1894

■ 50.2978, 44.6700,
32.0379

■ 76.5596, 81.2038,
90.0859

■ 45.8121, 38.2021,
22.8245

■ 84.9358, 93.0232,
108.0864

■ 42.0824, 32.7139,
15.5040

■ 86.1233, 95.3981,
108.4822

■ 39.0649, 28.1564,
9.9432

■ 36.7112, 24.4764,
5.9914

■ 34.9662, 21.6149,
3.4723

■ 33.7614, 19.5035,
2.1517

■ 33.5213, 19.0741,
1.9149

Harmonies

Analogous

The Analogous color harmony consists of three colors that are next to each other on the color wheel.



62.9809, 60.7203, 63.0770



61.6925, 60.7203, 56.6128



59.3530, 60.7203, 52.8807

Triad

The Triadic color harmony groups three colors that are evenly spaced from another and form a triangle on the color wheel.



61.6925, 60.7203, 56.6128



52.8854, 60.7203, 61.5688



58.7967, 60.7203, 81.8731

Complementary

The Complementary color scheme is a pair of colors which are on the opposite of each other on the color wheel.



61.6925, 60.7203, 56.6128



60.7219, 67.6609, 83.9887

Split Complementary

Split-complementary colors differ from the complementary color scheme. The scheme consists of three colors, the original color and two neighbors of the complement color.



56.1031, 60.7203, 81.3893



61.6925, 60.7203, 56.6128



52.7470, 60.7203, 69.2471

Square

The Square scheme is like the rectangle color scheme, but the four colors are evenly spaced on the color wheel.



61.6925, 60.7203, 56.6128



54.2922, 60.7203, 55.5835



53.9081, 60.7203, 76.6231



61.2742, 60.7203, 77.8972

Rectangle

The Rectangle color scheme consists of four colors that form a rectangle on the color wheel.



61.6925, 60.7203, 56.6128



57.5405, 60.7203, 52.2512



53.9081, 60.7203, 76.6231



57.8855, 60.7203, 82.2347

Sweetspot

The Sweet Spot groups the original color and five complimentary colors.



61.6942, 60.7230, 56.6141



89.9933, 93.0633, 97.4213



63.4738, 58.2390, 75.8383



19.1152, 19.7171, 20.5199



0.0000, 0.0000, 0.0000



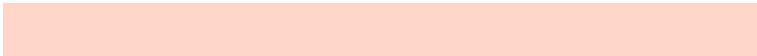
20.3446, 21.4041, 23.3091

Same Dimension

The Same Dimension uses a secret algorithm to generate beautiful new colors.



61.6942, 60.7230, 56.6141



75.7570, 73.3409, 65.6997



66.4841, 70.3029, 58.2107



14.6388, 14.8916, 15.0073



19.2400, 11.0541, 1.1196



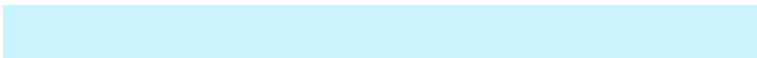
1.4905, 0.9543, 0.1056

Inverse Universe

The Inverse Universe completely reimagines the original color for something new.



60.7219, 67.6609, 83.9887



74.2929, 83.7686, 106.8610



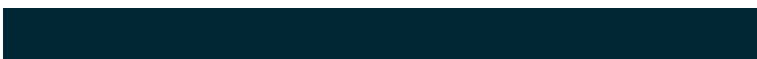
55.8615, 57.9399, 82.3686



14.5179, 15.7571, 18.4206



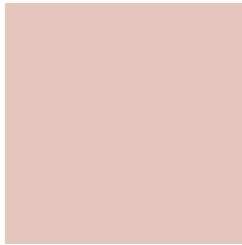
17.2205, 21.5030, 45.6261



1.3402, 1.7244, 3.3942

Previews

White Background



This preview shows how the XYZ color 61.6925, 60.7203, 56.6128 looks on a white background.

Color Contrast Check

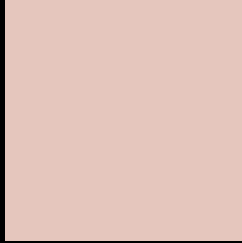
Large Text (above 18pt) WCAG AA × Fail

Any Text WCAG AA × Fail

Large Text (above 18pt) WCAG AAA × Fail

Any Text WCAG AAA × Fail

Black Background



This preview shows how the XYZ color 61.6925, 60.7203, 56.6128 looks on a black background.

Color Contrast Check

Large Text (above 18pt) WCAG AA ✓ Pass

Any Text WCAG AA ✓ Pass

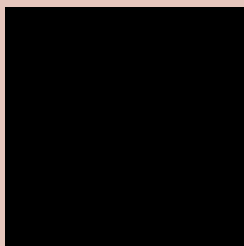
Large Text (above 18pt) WCAG AAA ✓ Pass

Any Text WCAG AAA ✓ Pass

If you want to check with other color combinations, try the [Color Contrast Checker](#).

XYZ 61.6925, 60.7203, 56.6128

Background



This preview shows how black text looks on a background with the XYZ color 61.6925, 60.7203, 56.6128.



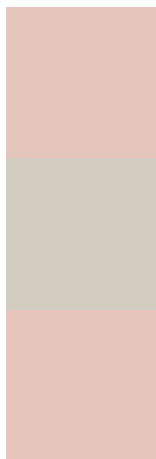
This preview shows how white text looks on a background with the XYZ color 61.6925, 60.7203,

56.6128.

Color Blindness Simulation

Color vision deficiency is a very complex topic, and I could not describe the different causes any better than Wikipedia does, so if you want to learn more, you should check out their [article about color blindness](#).

Dichromacy



Original Color

61.6925, 60.7203, 56.6128

Protanopia

57.9713, 60.8404, 58.5571

Deuteranopia

62.0125, 60.8853, 56.6277



Tritanopia

64.4267, 60.8392, 69.3202

Trichromacy



Original Color

61.6925, 60.7203, 56.6128

Protanomaly

59.4379, 60.9081, 57.9139

Deuteranomaly

62.0125, 60.8853, 56.6277

Tritanomaly

63.3556, 60.7330, 64.2606

Monochromacy



Original Color

61.6925, 60.7203, 56.6128

Achromatopsia

58.6655, 61.7207, 67.2138

Achromatomaly

59.5128, 61.1781, 63.3155

CSS Examples

Text

The CSS property to change the color of the text to XYZ 61.6925, 60.7203, 56.6128 is called "color". The color property can be set on classes, ids or directly on the HTML element.

This example shows how text in the color `rgb(229, 198, 189)` looks like.

```
.text, #text, p{  
    color:rgb(229, 198, 189)  
}
```

If you want to add a text shadow in that color use the text-shadow property, you can generate a text shadow directly with our [CSS Text Shadow Generator](#).

Here you see how black text with a 4 pixel rgb(229, 198, 189) colored shadow looks like.

```
.shadow{ text-shadow: 4px 4px 2px rgb(229, 198, 189) }
```

Border

The CSS property to change the border of an element to XYZ 61.6925, 60.7203, 56.6128 is called "border". The border property can be set on classes, ids or directly on the HTML element.

This example shows the color as border, it can be applied via the CSS property "border" or "border-color".

```
.border, #border, table{ border:4px solid rgb(229, 198, 189) }
```


If only the border color should be changed use the property `border-color`.

```
.border{ border-color:rgb(229, 198, 189) }
```

If you want to add a box shadow in that color use:

Here you see how a box with a 4 pixel `rgb(229, 198, 189)` colored shadow looks like.

```
.boxshadow{ -moz-box-shadow:4px 4px 4px  
4px rgb(229, 198, 189); -webkit-box-  
shadow:4px 4px 4px 4px rgb(229, 198, 189);  
box-shadow:4px 4px 4px 4px rgb(229, 198,  
189) }
```

Background

The CSS property to change the background color of an element to XYZ 61.6925, 60.7203, 56.6128 is called "background". The background property can be set on classes, ids or directly on the HTML element.

```
.background, #background, body{  
background: rgb(229, 198, 189) }
```

If only the background color should be changed can be used:

```
.background{ background-color: rgb(229,  
198, 189) }
```

This example shows the color as background, it is applied via the CSS property "background".

To optimize and compress your CSS code, you can use our [online CSS compressor and optimizer](#) based on csstidy. If you want to create a linear or radial gradient as background or border, check our [CSS Gradient Generator](#).

Hey! You found this booklet interesting? Support Converting Colors with the new Membership Option!

The pro membership hides all ads, plus gives you double the colors in the color bucket, and more awesome pro features!

[Learn more, Memberships starting at \\$2.50/m!](#)

**Follow me
on Twitter!**

@ConvertingColor