

# Converting Colors

XYZ(61.6498, 63.2147, 59.3898)

Have a look what the booklet for  
XYZ(61.6498, 63.2147, 59.3898)  
contains.

<b>XYZ(61.5812, 63.0425, 59.3748)</b> .....	3
<i><b>Conversions</b></i> .....	4
<i><b>Details</b></i> .....	6
<i><b>Harmonies</b></i> .....	12
<i><b>Previews</b></i> .....	24
<i><b>Color Blindness Simulation</b></i> .....	28
<i><b>CSS Examples</b></i> .....	31

# Color

**XYZ(61.5812, 63.0425,  
59.3748)**

# Conversions

## Conversions Part 1

<b>Format</b>	<b>Color</b>
Hex	DEDCD1
RGB	222, 205, 193
RGB Percent	87%, 80%, 76%
CMY	0.1294, 0.1961, 0.2431
CMYK	0.00, 0.08, 0.13, 0.13
HSL	25°, 31%, 81%
HSV	25°, 13%, 87%
XYZ	61.5812, 63.0425, 59.3748
YIQ	208.7150, 13.9840, -0.1280

# Conversions

## Conversions Part 2

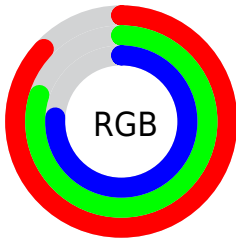
Format	Color
R <sub>Y</sub> B	222, 213, 193
Decimal	14601665
CIE Lab	83.46, 3.93, 8.09
CIE LCh	83, 8.996, 64.125
Yxy	63.0425, 0.3347, 0.3426
Android (android.graphics.Color)	4292791745 (0xFFDEDCD1)
YUV	208.7150, -7.7475, 11.6509
Hunter-Lab	79.3993, -0.5062, 11.2425

# Details

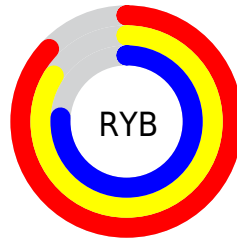
The XYZ color **61.5812, 63.0425, 59.3748** is a light color, and the websafe version is hex **CCCCCC**. A complement of this color would be **58.2235, 62.7034, 78.1422**, and the grayscale version is **60.4626, 63.6113, 69.2727**.

A 20% lighter version of the original color is **94.0989, 99.6196, 103.8915**, and **31.7366, 32.2422, 29.3616** is the 20% darker color. If you saturate the color by 10%, you get **56.3047, 56.1594, 46.3012**, and if you desaturate by 10%, it is **67.4918, 70.5976, 74.4954**.

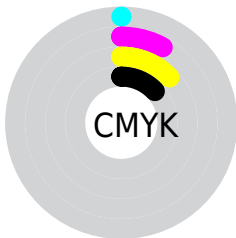
# Distribution



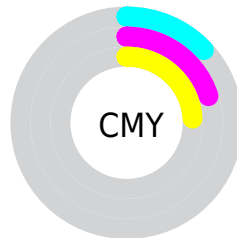
- Red (87%)
- Green (80%)
- Blue (76%)



- Red (87%)
- Yellow (84%)
- Blue (76%)



- Cyan (0%)
- Magenta (8%)
- Yellow (13%)
- Black (13%)



- Cyan (13%)
- Magenta (20%)
- Yellow (24%)

# Brightness & Saturation Gradients

These gradients show how the XYZ color 61.5812, 63.0425, 59.3748 changes by changing the brightness by 10 percent. The first figure shows a shift by +10% for each color and the second figure -10%.

Similar to the brightness gradients but the following saturation gradients show a change of the XYZ color 61.5812, 63.0425, 59.3748 by changing the saturation by 10% instead.



61.5812, 63.0425,  
59.3748

61.5812, 63.0425,  
59.3748

420.1437,  
435.7237, 440.0299

44.9487, 45.8756,  
42.4929

106.2134,  
109.2308, 105.4567

31.6181, 32.1477,  
29.1590

134.9438,  
139.0210, 135.4937

21.2241, 21.4743,  
18.9545

168.4375,  
173.7878, 170.7529

13.4013, 13.4711,  
11.4609

207.0599,  
213.9155, 211.6528

7.7844, 7.7538,  
6.2597

251.1764,  
259.7885, 258.6119

4.0079, 3.9378,  
2.9323

301.1523,

1.7066, 1.6388,

311.7913, 312.0488

1.0602

357.3530,  
370.3083, 372.3819

■ 0.4604, 0.3836,  
0.0000

■ 0.0000, 0.0000,  
0.0000

■ 61.5812, 63.0425,  
59.3748

■ 61.5812, 63.0425,  
59.3748

■ 56.3047, 56.1594,  
46.3012

■ 67.4918, 70.5976,  
74.4954

■ 51.6344, 49.9207,  
35.1814

■ 74.0528, 78.8345,  
91.7424

■ 47.5477, 44.3092,  
25.9212

■ 80.5365, 87.4737,  
107.2471

■ 44.0185, 39.3035,  
18.4166

■ 83.9345, 94.2698,  
108.3798

■ 41.0186, 34.8810,  
12.5536

■ 38.5166, 31.0174,  
8.2043

■ 36.4774, 27.6860,  
5.2215

■ 34.8595, 24.8571,  
3.4277

■ 33.9425, 23.1656,  
2.6825

# Harmonies

## Analogous

The Analogous color harmony consists of three colors that are next to each other on the color wheel.



63.0969, 63.0425, 62.7591



61.5812, 63.0425, 59.3748



59.6491, 63.0425, 58.4222

# Triad

The Triadic color harmony groups three colors that are evenly spaced from another and form a triangle on the color wheel.



61.5812, 63.0425, 59.3748



56.2361, 63.0425, 69.4225



62.0610, 63.0425, 77.9788

# Complementary

The Complementary color scheme is a pair of colors which are on the opposite of each other on the color wheel.



61.5812, 63.0425, 59.3748



58.2235, 62.7034, 78.1422

# Split Complementary

Split-complementary colors differ from the complementary color scheme. The scheme consists of three colors, the original color and two neighbors of the complement color.



60.1917, 63.0425, 79.9904



61.5812, 63.0425, 59.3748



56.8515, 63.0425, 74.8827

# Square

The Square scheme is like the rectangle color scheme, but the four colors are evenly spaced on the color wheel.



61.5812, 63.0425, 59.3748



56.5900, 63.0425, 64.0354



58.2890, 63.0425, 78.8278



63.3782, 63.0425, 73.4655



# Rectangle

The Rectangle color scheme consists of four colors that form a rectangle on the color wheel.



61.5812, 63.0425, 59.3748



58.3915, 63.0425, 59.2483



58.2890, 63.0425, 78.8278



61.4749, 63.0425, 78.9808

# Sweetspot

The Sweet Spot groups the original color and five complimentary colors.



61.5829, 63.0453, 59.3761



91.5734, 95.6054, 99.8535



60.8777, 58.3435, 69.2880



19.4640, 20.2902, 21.0199



0.0000, 0.0000, 0.0000



20.3446, 21.4041, 23.3091

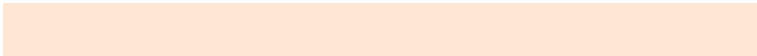


# Same Dimension

The Same Dimension uses a secret algorithm to generate beautiful new colors.



61.5829, 63.0453, 59.3761



82.0039, 83.3266, 75.5139



65.1082, 70.0959, 60.5512



14.1710, 14.6279, 14.3834



20.2647, 13.9673, 1.6279



1.4914, 1.1416, 0.1418

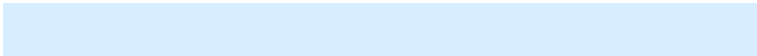


# Inverse Universe

The Inverse Universe completely reimagines the original color for something new.



58.2235, 62.7034, 78.1422



76.4470, 82.7603, 106.5529



54.8954, 56.0470, 77.0328



13.6162, 14.5715, 17.4826



12.6936, 12.8567, 42.8609

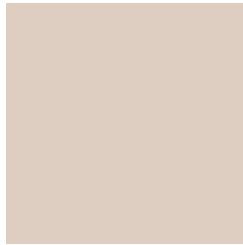


0.9675, 1.0665, 3.0001



# Previews

## White Background



This preview shows how the XYZ color 61.5812, 63.0425, 59.3748 looks on a white background.

## Color Contrast Check

Large Text (above 18pt) WCAG AA × Fail

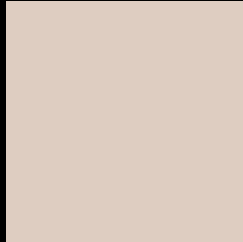
Any Text WCAG AA × Fail

Large Text (above 18pt) WCAG AAA × Fail

Any Text WCAG AAA × Fail



# Black Background



This preview shows how the XYZ color 61.5812, 63.0425, 59.3748 looks on a black background.

## Color Contrast Check

Large Text (above 18pt) WCAG AA ✓ Pass

Any Text WCAG AA ✓ Pass

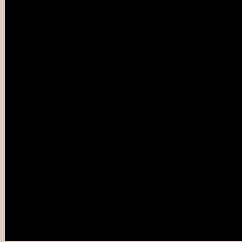
Large Text (above 18pt) WCAG AAA ✓ Pass

Any Text WCAG AAA ✓ Pass

If you want to check with other color combinations, try the [Color Contrast Checker](#).

# XYZ 61.5812, 63.0425, 59.3748

## Background



This preview shows how black text looks on a background with the XYZ color 61.5812, 63.0425, 59.3748.



This preview shows how white text looks on a background with the XYZ color 61.5812, 63.0425,



# Color Blindness Simulation

Color vision deficiency is a very complex topic, and I could not describe the different causes any better than Wikipedia does, so if you want to learn more, you should check out their [article about color blindness](#).

## Dichromacy



### Original Color

61.5812, 63.0425, 59.3748

### Protanopia

60.0748, 62.9678, 60.0267

### Deuteranopia

64.2285, 62.9920, 59.8124



## Tritanopia

64.4624, 62.7906, 74.3679

# Trichromacy



## Original Color

61.5812, 63.0425, 59.3748

## Protanomaly

60.7224, 62.9431, 59.9878

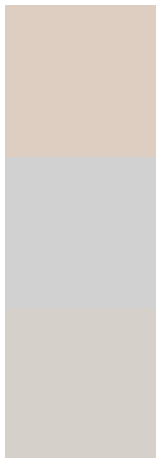
## Deuteranomaly

63.1712, 62.7941, 59.8299

## Tritanomaly

63.2462, 62.6424, 68.4323

# Monochromacy



## Original Color

61.5812, 63.0425, 59.3748

## Achromatopsia

60.6036, 63.7597, 69.4343

## Achromatomaly

61.0669, 63.7197, 65.5805

# CSS Examples

## Text

The CSS property to change the color of the text to XYZ 61.5812, 63.0425, 59.3748 is called "color". The color property can be set on classes, ids or directly on the HTML element.

This example shows how text in the color `rgb(222, 205, 193)` looks like.

```
.text, #text, p{  
    color:rgb(222, 205, 193)  
}
```

If you want to add a text shadow in that color use the text-shadow property, you can generate a text shadow directly with our [CSS Text Shadow Generator](#).

Here you see how black text with a 4 pixel rgb(222, 205, 193) colored shadow looks like.

```
.shadow{ text-shadow: 4px 4px 2px rgb(222, 205, 193) }
```

## Border

The CSS property to change the border of an element to XYZ 61.5812, 63.0425, 59.3748 is called "border". The border property can be set on classes, ids or directly on the HTML element.

This example shows the color as border, it can be applied via the CSS property "border" or "border-color".

```
.border, #border, table{ border:4px solid rgb(222, 205, 193) }
```



If only the border color should be changed use the property border-color.

```
.border{ border-color:rgb(222, 205, 193) }
```

If you want to add a box shadow in that color use:

Here you see how a box with a 4 pixel rgb(222, 205, 193) colored shadow looks like.

```
.boxshadow{ -moz-box-shadow:4px 4px 4px  
4px rgb(222, 205, 193); -webkit-box-  
shadow:4px 4px 4px 4px rgb(222, 205, 193);  
box-shadow:4px 4px 4px 4px rgb(222, 205,  
193) }
```

# Background

The CSS property to change the background color of an element to XYZ 61.5812, 63.0425, 59.3748 is called "background". The background property can be set on classes, ids or directly on the HTML element.

```
.background, #background, body{  
background: rgb(222, 205, 193) }
```

If only the background color should be changed can be used:

```
.background{ background-color: rgb(222,  
205, 193) }
```

This example shows the color as background, it is applied via the CSS property "background".

To optimize and compress your CSS code, you can use our [online CSS compressor and optimizer](#) based on csstidy. If you want to create a linear or radial gradient as background or border, check our [CSS Gradient Generator](#).

Hey! You found this booklet interesting? Support Converting Colors with the new Membership Option!

The pro membership hides all ads, plus gives you double the colors in the color bucket, and more awesome pro features!

**[Learn more, Memberships starting at \\$2.50/m!](#)**

**Follow me  
on Twitter!**

@ConvertingColor