

Converting Colors

XYZ(61.6550, 61.6893, 60.4236)

Have a look what the booklet for
XYZ(61.6550, 61.6893, 60.4236)
contains.

XYZ(61.4774, 61.5607, 60.2720)	3
<i>Conversions</i>	4
<i>Details</i>	6
<i>Harmonies</i>	12
<i>Previews</i>	24
<i>Color Blindness Simulation</i>	28
<i>CSS Examples</i>	31

Color

**XYZ(61.4774, 61.5607,
60.2720)**

Conversions

Conversions Part 1

Format	Color
Hex	E0C9C3
RGB	224, 201, 195
RGB Percent	88%, 79%, 76%
CMY	0.1216, 0.2117, 0.2353
CMYK	0.00, 0.10, 0.13, 0.12
HSL	12°, 32%, 82%
HSV	12°, 13%, 88%
XYZ	61.4774, 61.5607, 60.2720
YIQ	207.1930, 15.6340, 3.0100

Conversions

Conversions Part 2

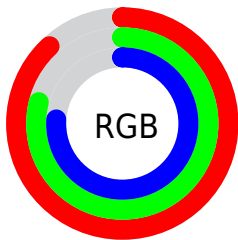
Format	Color
RYB	224, 203, 195
Decimal	14731715
CIELab	82.68, 7.07, 5.92
CIELCh	83, 9.220, 39.951
Yxy	61.5607, 0.3354, 0.3358
Android (android.graphics.Color)	4292921795 (0xFFE0C9C3)
YUV	207.1930, -6.0111, 14.7397
Hunter-Lab	78.4606, 2.5566, 9.3770

Details

The XYZ color **61.4774, 61.5607, 60.2720** is a light color, and the websafe version is hex **CCCCCC**. A complement of this color would be **61.0313, 67.1253, 80.2613**, and the grayscale version is **59.4644, 62.5612, 68.1292**.

A 20% lighter version of the original color is **94.5707, 99.8083, 106.3760**, and **31.6036, 31.2255, 29.5607** is the 20% darker color. If you saturate the color by 10%, you get **55.2287, 52.8164, 46.6170**, and if you desaturate by 10%, it is **68.5884, 71.4201, 76.0903**.

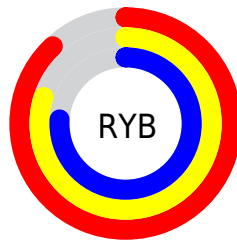
Distribution



Red (88%)

Green (79%)

Blue (76%)



Red (88%)

Yellow (80%)

Blue (76%)

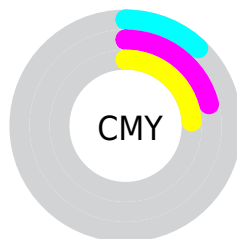


Cyan (0%)

Magenta (10%)

Yellow (13%)

Black (12%)



Cyan (12%)

Magenta (21%)

Yellow (24%)

Brightness & Saturation Gradients

These gradients show how the XYZ color 61.4774, 61.5607, 60.2720 changes by changing the brightness by 10 percent. The first figure shows a shift by +10% for each color and the second figure -10%.

Similar to the brightness gradients but the following saturation gradients show a change of the XYZ color 61.4774, 61.5607, 60.2720 by changing the saturation by 10% instead.

61.4774, 61.5607,
60.2720

61.4774, 61.5607,
60.2720

419.7703,
430.3269, 443.4321

44.8646, 44.6778,
43.2112

106.0641,
107.0904, 106.7714

31.5516, 31.2037,
29.7182

134.7686,
136.5060, 137.0470

21.1731, 20.7540,
19.3746

168.2345,
170.8679, 172.5646

13.3638, 12.9443,
11.7617

206.8269,
210.5606, 213.7429

7.7582, 7.3902,
6.4611

250.9114,
255.9685, 261.0002

3.9911, 3.7073,
3.0541

300.8532,

1.6971, 1.5112,

307.4759, 314.7551

1.1223

357.0177,
365.4672, 375.4262

■ 0.4545, 0.2966,
0.0000

■ 0.0000, 0.0000,
0.0000

■ 61.4774, 61.5607,
60.2720

■ 61.4774, 61.5607,
60.2720

■ 55.2287, 52.8164,
46.6170

■ 68.5884, 71.4201,
76.0903

■ 49.8039, 45.1399,
35.0272

■ 76.5878, 82.4236,
94.1564

■ 45.1697, 38.4922,
25.4026

■ 84.3255, 94.1369,
108.3336

■ 41.2879, 32.8291,
17.6335

■ 84.5507, 94.5874,
108.4086

■ 38.1176, 28.1030,
11.5993

■ 35.6134, 24.2623,
7.1648

■ 33.7245, 21.2501,
4.1750

■ 32.3919, 19.0025,
2.4431

■ 31.7325, 17.8309,
1.7692

Harmonies

Analogous

The Analogous color harmony consists of three colors that are next to each other on the color wheel.



62.3402, 61.5607, 65.1635



61.4774, 61.5607, 60.2720



59.8258, 61.5607, 57.3041

Triad

The Triadic color harmony groups three colors that are evenly spaced from another and form a triangle on the color wheel.



61.4774, 61.5607, 60.2720



55.0093, 61.5607, 63.3621



59.1716, 61.5607, 78.3462

Complementary

The Complementary color scheme is a pair of colors which are on the opposite of each other on the color wheel.



61.4774, 61.5607, 60.2720



61.0313, 67.1253, 80.2613

Split Complementary

Split-complementary colors differ from the complementary color scheme. The scheme consists of three colors, the original color and two neighbors of the complement color.



57.2167, 61.5607, 77.7966



61.4774, 61.5607, 60.2720



54.8431, 61.5607, 68.9300

Square

The Square scheme is like the rectangle color scheme, but the four colors are evenly spaced on the color wheel.



61.4774, 61.5607, 60.2720



56.1020, 61.5607, 59.0172



55.6427, 61.5607, 74.2733



60.9892, 61.5607, 75.7353

Rectangle

The Rectangle color scheme consists of four colors that form a rectangle on the color wheel.



61.4774, 61.5607, 60.2720



58.5149, 61.5607, 56.7112



55.6427, 61.5607, 74.2733



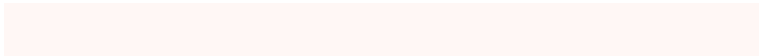
58.5083, 61.5607, 78.5282

Sweetspot

The Sweet Spot groups the original color and five complimentary colors.



61.4791, 61.5634, 60.2733



90.9247, 94.3079, 99.6372



62.9373, 59.9508, 74.7221



19.3002, 19.9626, 20.9653



0.0000, 0.0000, 0.0000



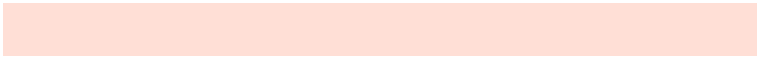
20.3446, 21.4041, 23.3091

Same Dimension

The Same Dimension uses a secret algorithm to generate beautiful new colors.



61.4791, 61.5634, 60.2733



79.6967, 78.7122, 74.7448



64.9683, 68.5419, 61.4364



13.9360, 14.1579, 14.3050



18.5371, 10.5121, 1.0520



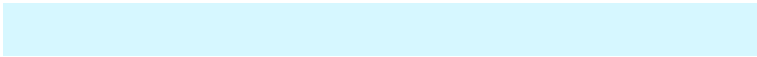
1.3491, 0.8571, 0.0943

Inverse Universe

The Inverse Universe completely reimagines the original color for something new.



61.0313, 67.1253, 80.2613



78.9642, 87.7946, 107.3919



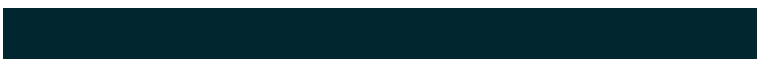
57.4826, 60.0280, 79.0784



13.8630, 15.0652, 17.5649



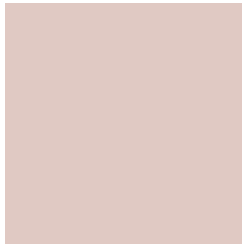
17.1399, 21.7493, 44.3430



1.2494, 1.6303, 3.0941

Previews

White Background



This preview shows how the XYZ color 61.4774, 61.5607, 60.2720 looks on a white background.

Color Contrast Check

Large Text (above 18pt) WCAG AA × Fail

Any Text WCAG AA × Fail

Large Text (above 18pt) WCAG AAA × Fail

Any Text WCAG AAA × Fail

Black Background



This preview shows how the XYZ color 61.4774, 61.5607, 60.2720 looks on a black background.

Color Contrast Check

Large Text (above 18pt) WCAG AA ✓ Pass

Any Text WCAG AA ✓ Pass

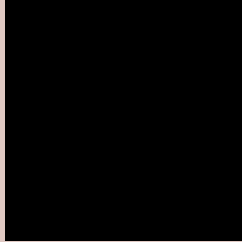
Large Text (above 18pt) WCAG AAA ✓ Pass

Any Text WCAG AAA ✓ Pass

If you want to check with other color combinations, try the [Color Contrast Checker](#).

XYZ 61.4774, 61.5607, 60.2720

Background



This preview shows how black text looks on a background with the XYZ color 61.4774, 61.5607, 60.2720.



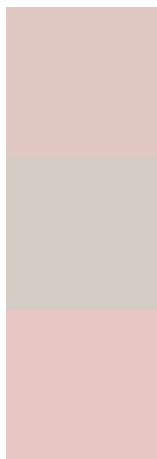
This preview shows how white text looks on a background with the XYZ color 61.4774, 61.5607,

60.2720.

Color Blindness Simulation

Color vision deficiency is a very complex topic, and I could not describe the different causes any better than Wikipedia does, so if you want to learn more, you should check out their [article about color blindness](#).

Dichromacy



Original Color

61.4774, 61.5607, 60.2720

Protanopia

59.0607, 61.6909, 61.6180

Deuteranopia

62.9069, 61.6100, 60.2061



Tritanopia

63.6957, 61.4120, 72.1149

Trichromacy



Original Color

61.4774, 61.5607, 60.2720

Protanomaly

59.8756, 61.7702, 60.9916

Deuteranomaly

62.4995, 61.7427, 60.2532

Tritanomaly

62.7372, 61.3594, 67.5684

Monochromacy



Original Color

61.4774, 61.5607, 60.2720

Achromatopsia

59.3074, 62.3960, 67.9493

Achromatomaly

60.0514, 62.1206, 65.3253

CSS Examples

Text

The CSS property to change the color of the text to XYZ 61.4774, 61.5607, 60.2720 is called "color". The color property can be set on classes, ids or directly on the HTML element.

This example shows how text in the color `rgb(224, 201, 195)` looks like.

```
.text, #text, p{  
    color:rgb(224, 201, 195)  
}
```

If you want to add a text shadow in that color use the text-shadow property, you can generate a text shadow directly with our [CSS Text Shadow Generator](#).

Here you see how black text with a 4 pixel rgb(224, 201, 195) colored shadow looks like.

```
.shadow{ text-shadow: 4px 4px 2px rgb(224, 201, 195) }
```

Border

The CSS property to change the border of an element to XYZ 61.4774, 61.5607, 60.2720 is called "border". The border property can be set on classes, ids or directly on the HTML element.

This example shows the color as border, it can be applied via the CSS property "border" or "border-color".

```
.border, #border, table{ border:4px solid rgb(224, 201, 195) }
```


If only the border color should be changed use the property `border-color`.

```
.border{ border-color:rgb(224, 201, 195) }
```

If you want to add a box shadow in that color use:

Here you see how a box with a 4 pixel `rgb(224, 201, 195)` colored shadow looks like.

```
.boxshadow{ -moz-box-shadow:4px 4px 4px  
4px rgb(224, 201, 195); -webkit-box-  
shadow:4px 4px 4px 4px rgb(224, 201, 195);  
box-shadow:4px 4px 4px 4px rgb(224, 201,  
195) }
```

Background

The CSS property to change the background color of an element to XYZ 61.4774, 61.5607, 60.2720 is called "background". The background property can be set on classes, ids or directly on the HTML element.

```
.background, #background, body{  
background: rgb(224, 201, 195) }
```

If only the background color should be changed can be used:

```
.background{ background-color: rgb(224,  
201, 195) }
```

This example shows the color as background, it is applied via the CSS property "background".

To optimize and compress your CSS code, you can use our [online CSS compressor and optimizer](#) based on csstidy. If you want to create a linear or radial gradient as background or border, check our [CSS Gradient Generator](#).

Hey! You found this booklet interesting? Support Converting Colors with the new Membership Option!

The pro membership hides all ads, plus gives you double the colors in the color bucket, and more awesome pro features!

[Learn more, Memberships starting at \\$2.50/m!](#)

**Follow me
on Twitter!**

@ConvertingColor