

Converting Colors

XYZ(61.6834, 61.2758, 62.7685)

Have a look what the booklet for
XYZ(61.6834, 61.2758, 62.7685)
contains.

XYZ(61.7035, 61.2794, 62.6088)	3
<i>Conversions</i>	4
<i>Details</i>	6
<i>Harmonies</i>	12
<i>Previews</i>	24
<i>Color Blindness Simulation</i>	28
<i>CSS Examples</i>	31

Color

**XYZ(61.7035, 61.2794,
62.6088)**

Conversions

Conversions Part 1

Format	Color
Hex	E0C8C7
RGB	224, 200, 199
RGB Percent	88%, 78%, 78%
CMY	0.1216, 0.2157, 0.2196
CMYK	0.00, 0.11, 0.11, 0.12
HSL	2°, 29%, 83%
HSV	2°, 11%, 88%
XYZ	61.7035, 61.2794, 62.6088
YIQ	207.0620, 14.6250, 4.7770

Conversions

Conversions Part 2

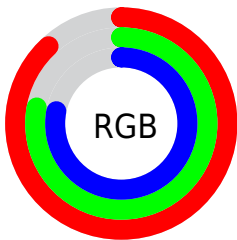
Format	Color
R_{YB}	224, 200, 199
Decimal	14731463
CIE Lab	82.53, 8.25, 3.57
CIE LCh	83, 8.985, 23.383
Yxy	61.2794, 0.3325, 0.3302
Android (android.graphics.Color)	4292921543 (0xFFE0C8C7)
YUV	207.0620, -3.9746, 14.8546
Hunter-Lab	78.2812, 3.7069, 7.3770

Details

The XYZ color **61.7035, 61.2794, 62.6088** is a light color, and the websafe version is hex **CCCCCC**. A complement of this color would be **63.3949, 70.2977, 80.7490**, and the grayscale version is **59.3678, 62.4595, 68.0184**.

A 20% lighter version of the original color is **95.0500, 100.0000, 108.9000**, and **31.7519, 31.0371, 31.1053** is the 20% darker color. If you saturate the color by 10%, you get **54.6579, 51.0481, 48.3594**, and if you desaturate by 10%, it is **69.8356, 73.0697, 79.1105**.

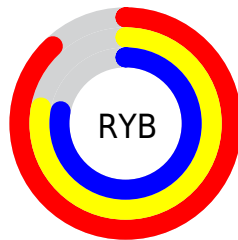
Distribution



Red (88%)

Green (78%)

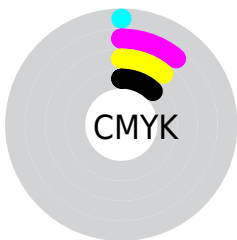
Blue (78%)



Red (88%)

Yellow (78%)

Blue (78%)

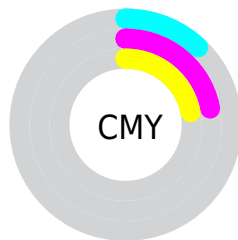


Cyan (0%)

Magenta (11%)

Yellow (11%)

Black (12%)



Cyan (12%)

Magenta (22%)

Yellow (22%)

Brightness & Saturation Gradients

These gradients show how the XYZ color 61.7035, 61.2794, 62.6088 changes by changing the brightness by 10 percent. The first figure shows a shift by +10% for each color and the second figure -10%.

Similar to the brightness gradients but the following saturation gradients show a change of the XYZ color 61.7035, 61.2794, 62.6088 by changing the saturation by 10% instead.

61.7035, 61.2794,
62.6088

61.7035, 61.2794,
62.6088

420.5835,
429.2977, 452.2171

45.0479, 44.4507,
45.0858

106.3892,
106.6834, 110.1851

31.6966, 31.0250,
31.1816

135.1501,
136.0274, 141.0754

21.2843, 20.6179,
20.4776

168.6766,
170.3121, 177.2587

13.4456, 12.8450,
12.5551

207.3344,
209.9217, 219.1534

7.8152, 7.3219,
6.9958

251.4885,
255.2407, 267.1780

4.0277, 3.6642,
3.3811

301.5046,

1.7178, 1.4876,

306.6534, 321.7512

1.2924

357.7478,
364.5443, 383.2914

■ 0.4674, 0.2799,
0.0555

■ 0.0000, 0.0000,
0.0000

■ 61.7035, 61.2794,
62.6088

■ 61.7035, 61.2794,
62.6088

■ 54.6579, 51.0481,
48.3594

■ 69.8356, 73.0697,
79.1105

■ 48.6480, 42.3028,
36.2610

■ 79.0921, 86.4719,
97.9522

■ 43.6265, 34.9770,
26.2104

■ 84.5507, 94.5874,
108.4086

■ 39.5404, 28.9958,
18.0942

■ 36.3320, 24.2774,
11.7882

■ 33.9368, 20.7314,
7.1535

■ 32.2817, 18.2550,
4.0315

■ 31.2805, 16.7278,
2.2327

■ 30.8383, 16.0427,
1.4712

Harmonies

Analogous

The Analogous color harmony consists of three colors that are next to each other on the color wheel.



61.9939, 61.2794, 67.9502



61.7035, 61.2794, 62.6088



60.4770, 61.2794, 58.5812

Triad

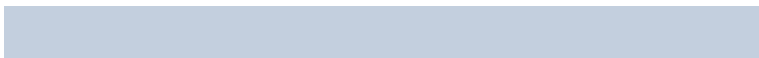
The Triadic color harmony groups three colors that are evenly spaced from another and form a triangle on the color wheel.



61.7035, 61.2794, 62.6088



55.3273, 61.2794, 60.6054



57.8193, 61.2794, 77.8011

Complementary

The Complementary color scheme is a pair of colors which are on the opposite of each other on the color wheel.



61.7035, 61.2794, 62.6088



63.3949, 70.2977, 80.7490

Split Complementary

Split-complementary colors differ from the complementary color scheme. The scheme consists of three colors, the original color and two neighbors of the complement color.



56.0671, 61.2794, 75.5860



61.7035, 61.2794, 62.6088



54.6489, 61.2794, 65.5104

Square

The Square scheme is like the rectangle color scheme, but the four colors are evenly spaced on the color wheel.



61.7035, 61.2794, 62.6088



56.7894, 61.2794, 57.4698



54.9167, 61.2794, 71.0133



59.7237, 61.2794, 76.9194

Rectangle

The Rectangle color scheme consists of four colors that form a rectangle on the color wheel.



61.7035, 61.2794, 62.6088



59.3077, 61.2794, 57.0837



54.9167, 61.2794, 71.0133



57.1935, 61.2794, 77.3902

Sweetspot

The Sweet Spot groups the original color and five complimentary colors.



61.7052, 61.2821, 62.6101



91.5447, 94.9213, 101.7758



64.5063, 62.0316, 78.5039



19.3988, 20.0337, 21.3870



0.0000, 0.0000, 0.0000



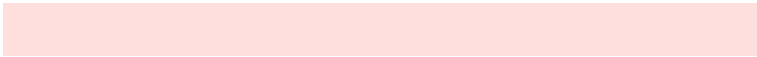
20.3446, 21.4041, 23.3091

Same Dimension

The Same Dimension uses a secret algorithm to generate beautiful new colors.



61.7052, 61.2821, 62.6101



80.8409, 79.3983, 80.0665



64.6768, 67.2253, 63.6006



13.7512, 13.7883, 14.2434



17.9699, 9.3777, 0.8630



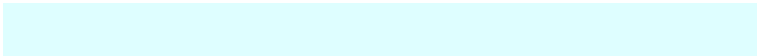
1.2614, 0.6816, 0.0651

Inverse Universe

The Inverse Universe completely reimagines the original color for something new.



63.3949, 70.2977, 80.7490



83.4650, 93.3993, 108.2365



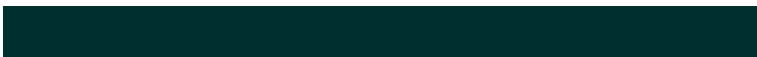
60.2200, 63.9478, 79.6907



14.0669, 15.4730, 17.6329



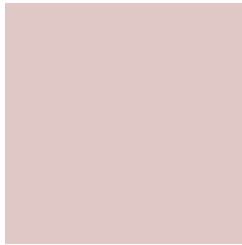
21.9977, 31.4649, 45.9623



1.5396, 2.2107, 3.1908

Previews

White Background



This preview shows how the XYZ color 61.7035, 61.2794, 62.6088 looks on a white background.

Color Contrast Check

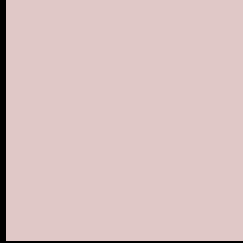
Large Text (above 18pt) WCAG AA × Fail

Any Text WCAG AA × Fail

Large Text (above 18pt) WCAG AAA × Fail

Any Text WCAG AAA × Fail

Black Background



This preview shows how the XYZ color 61.7035, 61.2794, 62.6088 looks on a black background.

Color Contrast Check

Large Text (above 18pt) WCAG AA ✓ Pass

Any Text WCAG AA ✓ Pass

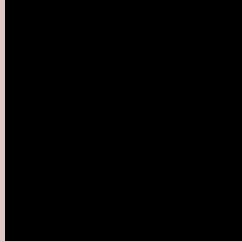
Large Text (above 18pt) WCAG AAA ✓ Pass

Any Text WCAG AAA ✓ Pass

If you want to check with other color combinations, try the [Color Contrast Checker](#).

XYZ 61.7035, 61.2794, 62.6088

Background



This preview shows how black text looks on a background with the XYZ color 61.7035, 61.2794, 62.6088.



This preview shows how white text looks on a background with the XYZ color 61.7035, 61.2794,

Color Blindness Simulation

Color vision deficiency is a very complex topic, and I could not describe the different causes any better than Wikipedia does, so if you want to learn more, you should check out their [article about color blindness](#).

Dichromacy



Original Color

61.7035, 61.2794, 62.6088

Protanopia

59.0703, 61.6285, 64.6593

Deuteranopia

62.7271, 61.4643, 62.5906



Tritanopia

63.5684, 61.3610, 71.4442

Trichromacy



Original Color

61.7035, 61.2794, 62.6088

Protanomaly

59.9229, 61.3760, 63.9468

Deuteranomaly

62.4108, 61.3013, 62.5758

Tritanomaly

62.8599, 61.4085, 68.2145

Monochromacy



Original Color

61.7035, 61.2794, 62.6088

Achromatopsia

59.3074, 62.3960, 67.9493

Achromatomaly

59.9325, 61.6915, 65.8756

CSS Examples

Text

The CSS property to change the color of the text to XYZ 61.7035, 61.2794, 62.6088 is called "color". The color property can be set on classes, ids or directly on the HTML element.

This example shows how text in the color `rgb(224, 200, 199)` looks like.

```
.text, #text, p{  
    color:rgb(224, 200, 199)  
}
```

If you want to add a text shadow in that color use the text-shadow property, you can generate a text shadow directly with our [CSS Text Shadow Generator](#).

Here you see how black text with a 4 pixel rgb(224, 200, 199) colored shadow looks like.

```
.shadow{ text-shadow: 4px 4px 2px rgb(224, 200, 199) }
```

Border

The CSS property to change the border of an element to XYZ 61.7035, 61.2794, 62.6088 is called "border". The border property can be set on classes, ids or directly on the HTML element.

This example shows the color as border, it can be applied via the CSS property "border" or "border-color".

```
.border, #border, table{ border:4px solid rgb(224, 200, 199) }
```


If only the border color should be changed use the property `border-color`.

```
.border{ border-color:rgb(224, 200, 199) }
```

If you want to add a box shadow in that color use:

Here you see how a box with a 4 pixel `rgb(224, 200, 199)` colored shadow looks like.

```
.boxshadow{ -moz-box-shadow:4px 4px 4px 4px rgb(224, 200, 199); -webkit-box-shadow:4px 4px 4px 4px rgb(224, 200, 199); box-shadow:4px 4px 4px 4px rgb(224, 200, 199) }
```

Background

The CSS property to change the background color of an element to XYZ 61.7035, 61.2794, 62.6088 is called "background". The background property can be set on classes, ids or directly on the HTML element.

```
.background, #background, body{  
background: rgb(224, 200, 199) }
```

If only the background color should be changed can be used:

```
.background{ background-color: rgb(224,  
200, 199) }
```

This example shows the color as background, it is applied via the CSS property "background".

To optimize and compress your CSS code, you can use our [online CSS compressor and optimizer](#) based on csstidy. If you want to create a linear or radial gradient as background or border, check our [CSS Gradient Generator](#).

Hey! You found this booklet interesting? Support Converting Colors with the new Membership Option!

The pro membership hides all ads, plus gives you double the colors in the color bucket, and more awesome pro features!

[Learn more, Memberships starting at \\$2.50/m!](#)

**Follow me
on Twitter!**

@ConvertingColor