

Converting Colors

XYZ(61.7356, 61.1857, 67.5877)

Have a look what the booklet for
XYZ(61.7356, 61.1857, 67.5877)
contains.

XYZ(61.7356, 61.1857, 67.5877)	3
<i>Conversions</i>	4
<i>Details</i>	6
<i>Harmonies</i>	12
<i>Previews</i>	24
<i>Color Blindness Simulation</i>	28
<i>CSS Examples</i>	31

Color

**XYZ(61.7356, 61.1857,
67.5877)**

Conversions

Conversions Part 1

Format	Color
Hex	DDC8CF
RGB	221, 200, 207
RGB Percent	87%, 78%, 81%
CMY	0.1333, 0.2157, 0.1882
CMYK	0.00, 0.10, 0.06, 0.13
HSL	340°, 24%, 83%
HSV	340°, 10%, 87%
XYZ	61.7356, 61.1857, 67.5877
YIQ	207.0770, 10.2690, 6.6290

Conversions

Conversions Part 2

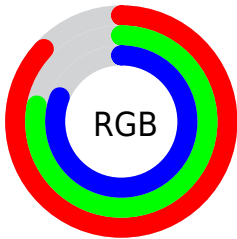
Format	Color
R _Y B	221, 200, 207
Decimal	14534863
CIE Lab	82.48, 8.54, -0.82
CIE LCh	82, 8.577, 354.531
Yxy	61.1857, 0.3241, 0.3212
Android (android.graphics.Color)	4292724943 (0xFFDDC8CF)
YUV	207.0770, -0.0380, 12.2105
Hunter-Lab	78.2213, 3.9926, 3.5249

Details

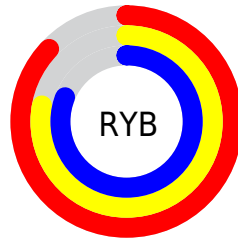
The XYZ color **61.7356, 61.1857, 67.5877** is a light color, and the websafe version is hex **CCCCCC**. A complement of this color would be **61.8159, 68.8490, 73.6529**, and the grayscale version is **59.3549, 62.4459, 68.0036**.

A 20% lighter version of the original color is **95.0500, 100.0000, 108.9000**, and **31.7545, 30.9647, 34.4401** is the 20% darker color. If you saturate the color by 10%, you get **55.2646, 50.9929, 56.9533**, and if you desaturate by 10%, it is **69.1181, 72.9307, 79.3570**.

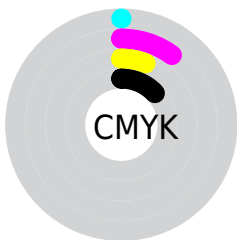
Distribution



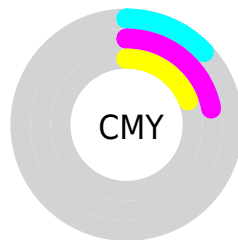
- Red (87%)
- Green (78%)
- Blue (81%)



- Red (87%)
- Yellow (78%)
- Blue (81%)



- Cyan (0%)
- Magenta (10%)
- Yellow (6%)
- Black (13%)



- Cyan (13%)
- Magenta (22%)
- Yellow (19%)

Brightness & Saturation Gradients

These gradients show how the XYZ color 61.7356, 61.1857, 67.5877 changes by changing the brightness by 10 percent. The first figure shows a shift by +10% for each color and the second figure -10%.

Similar to the brightness gradients but the following saturation gradients show a change of the XYZ color 61.7356, 61.1857, 67.5877 by changing the saturation by 10% instead.

61.7356, 61.1857,
67.5877

61.7356, 61.1857,
67.5877

420.6989,
428.9546, 470.5922

45.0739, 44.3751,
49.0978

106.4354,
106.5478, 117.4108

31.7172, 30.9655,
34.3309

135.2042,
135.8680, 149.5810

21.3000, 20.5726,
22.8685

168.7394,
170.1268, 187.1484

13.4572, 12.8119,
14.2921

207.4064,
209.7087, 230.5315

7.8233, 7.2992,
8.1830

251.5704,
254.9980, 280.1489

4.0329, 3.6499,
4.1228

301.5970,

1.7208, 1.4797,

306.3792, 336.4191

1.6930

357.8514,
364.2366, 399.7607

■ 0.4692, 0.2744,
0.3559

■ 0.0000, 0.0000,
0.0000

■ 61.7356, 61.1857,
67.5877

■ 61.7356, 61.1857,
67.5877

■ 55.2646, 50.9929,
56.9533

■ 69.1181, 72.9307,
79.3570

■ 49.6636, 42.2793,
47.4153

■ 77.4410, 86.2811,
92.2904

■ 44.8959, 34.9780,
38.9384

■ 83.0249, 93.8706,
105.1831

■ 40.9197, 29.0136,
31.4842

■ 83.6292, 94.1124,
108.3655

■ 37.6896, 24.3037,
25.0114

■ 35.1554, 20.7569,
19.4760

■ 33.2603, 18.2688,
14.8298

■ 31.9376, 16.7165,
11.0194

■ 31.0800, 15.8958,
7.9754

Harmonies

Analogous

The Analogous color harmony consists of three colors that are next to each other on the color wheel.



61.0739, 61.1857, 72.6528



61.7356, 61.1857, 67.5877



61.4217, 61.1857, 62.5162

Triad

The Triadic color harmony groups three colors that are evenly spaced from another and form a triangle on the color wheel.



61.7356, 61.1857, 67.5877



56.7037, 61.1857, 57.8513



56.1334, 61.1857, 75.1867

Complementary

The Complementary color scheme is a pair of colors which are on the opposite of each other on the color wheel.



61.7356, 61.1857, 67.5877



61.8159, 68.8490, 73.6529

Split Complementary

Split-complementary colors differ from the complementary color scheme. The scheme consists of three colors, the original color and two neighbors of the complement color.



55.0066, 61.1857, 70.9013



61.7356, 61.1857, 67.5877



55.3310, 61.1857, 60.9323

Square

The Square scheme is like the rectangle color scheme, but the four colors are evenly spaced on the color wheel.



61.7356, 61.1857, 67.5877



58.4918, 61.1857, 57.0672



54.7159, 61.1857, 65.6632



57.8198, 61.1857, 77.1853

Rectangle

The Rectangle color scheme consists of four colors that form a rectangle on the color wheel.



61.7356, 61.1857, 67.5877



60.7047, 61.1857, 59.7881



54.7159, 61.1857, 65.6632



55.6780, 61.1857, 73.9553

Sweetspot

The Sweet Spot groups the original color and five complimentary colors.



61.7373, 61.1884, 67.5890



91.8474, 94.8916, 103.8346



61.4391, 60.8280, 76.9103



19.4802, 20.0258, 21.9404



0.0000, 0.0000, 0.0000



20.3446, 21.4041, 23.3091

Same Dimension

The Same Dimension uses a secret algorithm to generate beautiful new colors.



61.7373, 61.1884, 67.5890



83.8789, 82.2442, 91.0369



61.7204, 62.4933, 63.4562



13.2341, 13.1227, 14.4940



18.0803, 9.2332, 4.8029



1.2106, 0.6139, 0.5177

Inverse Universe

The Inverse Universe completely reimagines the original color for something new.



61.7373, 61.1884, 67.5890



83.8789, 82.2442, 91.0369



61.8146, 67.3855, 78.1563



13.2341, 13.1227, 14.4940



18.0803, 9.2332, 4.8029



1.2106, 0.6139, 0.5177

Previews

White Background



This preview shows how the XYZ color 61.7356, 61.1857, 67.5877 looks on a white background.

Color Contrast Check

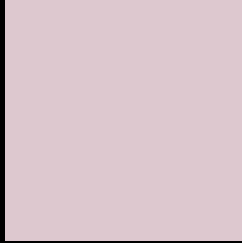
Large Text (above 18pt) WCAG AA × Fail

Any Text WCAG AA × Fail

Large Text (above 18pt) WCAG AAA × Fail

Any Text WCAG AAA × Fail

Black Background



This preview shows how the XYZ color 61.7356, 61.1857, 67.5877 looks on a black background.

Color Contrast Check

Large Text (above 18pt) WCAG AA ✓ Pass

Any Text WCAG AA ✓ Pass

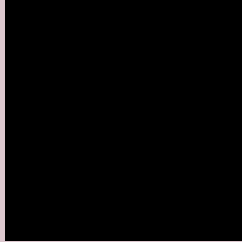
Large Text (above 18pt) WCAG AAA ✓ Pass

Any Text WCAG AAA ✓ Pass

If you want to check with other color combinations, try the [Color Contrast Checker](#).

XYZ 61.7356, 61.1857, 67.5877

Background



This preview shows how black text looks on a background with the XYZ color 61.7356, 61.1857, 67.5877.



This preview shows how white text looks on a background with the XYZ color 61.7356, 61.1857,

Color Blindness Simulation

Color vision deficiency is a very complex topic, and I could not describe the different causes any better than Wikipedia does, so if you want to learn more, you should check out their [article about color blindness](#).

Dichromacy



Original Color

61.7356, 61.1857, 67.5877

Protanopia

59.1139, 61.1991, 69.0186

Deuteranopia

62.4264, 61.1991, 67.5539



Tritanopia

62.6852, 61.2315, 72.1333

Trichromacy



Original Color

61.7356, 61.1857, 67.5877

Protanomaly

60.1817, 61.4121, 68.3563

Deuteranomaly

62.1173, 61.0398, 67.5394

Tritanomaly

62.3055, 61.0796, 70.1337

Monochromacy



Original Color

61.7356, 61.1857, 67.5877

Achromatopsia

59.3074, 62.3960, 67.9493

Achromatomaly

60.0067, 61.6878, 67.7757

CSS Examples

Text

The CSS property to change the color of the text to XYZ 61.7356, 61.1857, 67.5877 is called "color". The color property can be set on classes, ids or directly on the HTML element.

This example shows how text in the color rgb(221, 200, 207) looks like.

```
.text, #text, p{  
    color:rgb(221, 200, 207)  
}
```

If you want to add a text shadow in that color use the text-shadow property, you can generate a text shadow directly with our [CSS Text Shadow Generator](#).

Here you see how black text with a 4 pixel rgb(221, 200, 207) colored shadow looks like.

```
.shadow{ text-shadow: 4px 4px 2px rgb(221, 200, 207) }
```

Border

The CSS property to change the border of an element to XYZ 61.7356, 61.1857, 67.5877 is called "border". The border property can be set on classes, ids or directly on the HTML element.

This example shows the color as border, it can be applied via the CSS property "border" or "border-color".

```
.border, #border, table{ border:4px solid rgb(221, 200, 207) }
```


If only the border color should be changed use the property `border-color`.

```
.border{ border-color:rgb(221, 200, 207) }
```

If you want to add a box shadow in that color use:

Here you see how a box with a 4 pixel `rgb(221, 200, 207)` colored shadow looks like.

```
.boxshadow{ -moz-box-shadow:4px 4px 4px  
4px rgb(221, 200, 207); -webkit-box-  
shadow:4px 4px 4px 4px rgb(221, 200, 207);  
box-shadow:4px 4px 4px 4px rgb(221, 200,  
207) }
```

Background

The CSS property to change the background color of an element to XYZ 61.7356, 61.1857, 67.5877 is called "background". The background property can be set on classes, ids or directly on the HTML element.

```
.background, #background, body{  
background: rgb(221, 200, 207) }
```

If only the background color should be changed can be used:

```
.background{ background-color: rgb(221,  
200, 207) }
```

This example shows the color as background, it is applied via the CSS property "background".

To optimize and compress your CSS code, you can use our [online CSS compressor and optimizer](#) based on csstidy. If you want to create a linear or radial gradient as background or border, check our [CSS Gradient Generator](#).

Hey! You found this booklet interesting? Support Converting Colors with the new Membership Option!

The pro membership hides all ads, plus gives you double the colors in the color bucket, and more awesome pro features!

[Learn more, Memberships starting at \\$2.50/m!](#)

**Follow me
on Twitter!**

@ConvertingColor