

Converting Colors

XYZ(61.7474, 62.9302, 52.2680)

Have a look what the booklet for
XYZ(61.7474, 62.9302, 52.2680)
contains.

XYZ(61.8260, 62.9750, 52.0768)	3
<i>Conversions</i>	4
<i>Details</i>	6
<i>Harmonies</i>	12
<i>Previews</i>	24
<i>Color Blindness Simulation</i>	28
<i>CSS Examples</i>	31

Color

**XYZ(61.8260, 62.9750,
52.0768)**

Conversions

Conversions Part 1

Format	Color
Hex	E4CCB4
RGB	228, 204, 180
RGB Percent	89%, 80%, 71%
CMY	0.1059, 0.2000, 0.2941
CMYK	0.00, 0.11, 0.21, 0.11
HSL	30°, 47%, 80%
HSV	30°, 21%, 89%
XYZ	61.8260, 62.9750, 52.0768
YIQ	208.4400, 22.0080, -2.3760

Conversions

Conversions Part 2

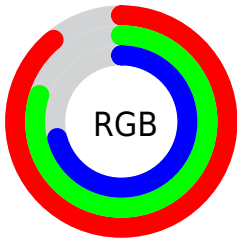
Format	Color
R _Y B	228, 228, 180
Decimal	14994612
CIE Lab	83.43, 4.65, 15.02
CIE LCh	83, 15.726, 72.795
Yxy	62.9750, 0.3495, 0.3560
Android (android.graphics.Color)	4293184692 (0xFFE4CCB4)
YUV	208.4400, -14.0209, 17.1541
Hunter-Lab	79.3568, 0.1930, 16.6415

Details

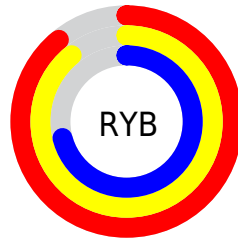
The XYZ color **61.8260, 62.9750, 52.0768** is a light color, and the websafe version is hex **CCCCCC**. A complement of this color would be **54.4185, 58.4890, 81.8206**, and the grayscale version is **60.3194, 63.4607, 69.1087**.

A 20% lighter version of the original color is **92.1403, 98.8361, 93.5778**, and **31.7504, 32.1157, 24.6042** is the 20% darker color. If you saturate the color by 10%, you get **57.0815, 56.9020, 39.9632**, and if you desaturate by 10%, it is **67.1543, 69.6031, 66.2714**.

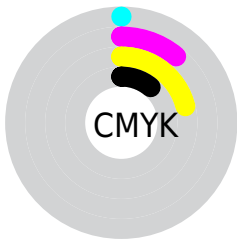
Distribution



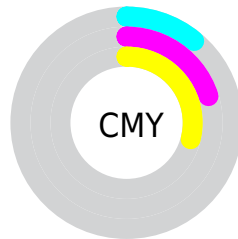
- Red (89%)
- Green (80%)
- Blue (71%)



- Red (89%)
- Yellow (89%)
- Blue (71%)



- Cyan (0%)
- Magenta (11%)
- Yellow (21%)
- Black (11%)





- Cyan (11%)
- Magenta (20%)
- Yellow (29%)

Brightness & Saturation Gradients


These gradients show how the XYZ color 61.8260, 62.9750, 52.0768 changes by changing the brightness by 10 percent. The first figure shows a shift by +10% for each color and the second figure -10%.

Similar to the brightness gradients but the following saturation gradients show a change of the XYZ color 61.8260, 62.9750, 52.0768 by changing the saturation by 10% instead.


 61.8260, 62.9750,
52.0768

 61.8260, 62.9750,
52.0768

421.0238,
435.4788, 411.6984

 45.1472, 45.8210,
36.6836


 106.5654,
109.1334, 94.6722

 31.7751, 32.1046,
24.6688


135.3566,
138.9067, 122.7116

 21.3445, 21.4414,
15.6137


168.9161,
173.6551, 155.8034

 13.4900, 13.4470,
9.0998

207.6091,
213.7631, 194.3662

 7.8461, 7.7371,
4.7086

251.8010,
259.6150, 238.8186

 4.0476, 3.9272,
2.0216

301.8572,

 1.7291, 1.6329,

311.5954, 289.5790

0.5685

358.1430,
370.0885, 347.0661

■ 0.4744, 0.3796,
0.0000

■ 0.0000, 0.0000,
0.0000

■ 61.8260, 62.9750,
52.0768

■ 61.8260, 62.9750,
52.0768

■ 57.0815, 56.9020,
39.9632

■ 67.1543, 69.6031,
66.2714

■ 52.8928, 51.3597,
29.8270

■ 73.0827, 76.7928,
82.6359

■ 49.2371, 46.3341,
21.5614

■ 79.6334, 84.5615,
101.2589

■ 46.0876, 41.8073,
15.0480

■ 84.1056, 91.8351,
107.9009

■ 43.4148, 37.7600,
10.1546

■ 85.8051, 95.2341,
108.4673

■ 41.1854, 34.1710,
6.7299

■ 39.3603, 31.0167,
4.5930

■ 38.0149, 28.5337,
3.5039

Harmonies

Analogous

The Analogous color harmony consists of three colors that are next to each other on the color wheel.



64.8220, 62.9750, 56.5315



61.8260, 62.9750, 52.0768



58.4085, 62.9750, 51.7646

Triad

The Triadic color harmony groups three colors that are evenly spaced from another and form a triangle on the color wheel.



61.8260, 62.9750, 52.0768



53.6577, 62.9750, 72.8336



64.4447, 62.9750, 83.3687

Complementary

The Complementary color scheme is a pair of colors which are on the opposite of each other on the color wheel.



61.8260, 62.9750, 52.0768



54.4185, 58.4890, 81.8206

Split Complementary

Split-complementary colors differ from the complementary color scheme. The scheme consists of three colors, the original color and two neighbors of the complement color.



61.3269, 62.9750, 88.6657



61.8260, 62.9750, 52.0768



55.1500, 62.9750, 82.2045

Square

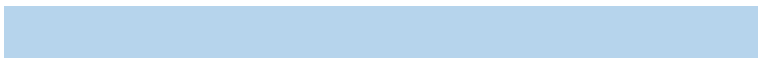
The Square scheme is like the rectangle color scheme, but the four colors are evenly spaced on the color wheel.



61.8260, 62.9750, 52.0768



53.7798, 62.9750, 63.1376



57.9280, 62.9750, 88.2204



66.3731, 62.9750, 74.3035

Rectangle

The Rectangle color scheme consists of four colors that form a rectangle on the color wheel.



61.8260, 62.9750, 52.0768



56.3575, 62.9750, 53.8984



57.9280, 62.9750, 88.2204



63.4960, 62.9750, 85.6861

Sweetspot

The Sweet Spot groups the original color and five complimentary colors.



61.8277, 62.9778, 52.0781



90.2920, 94.2701, 95.6417



59.2159, 53.4969, 64.3323



19.2191, 20.0477, 20.1759



0.0000, 0.0000, 0.0000



20.3446, 21.4041, 23.3091

Same Dimension

The Same Dimension uses a secret algorithm to generate beautiful new colors.



61.8277, 62.9778, 52.0781



77.0942, 77.8780, 60.4032



67.9770, 75.2766, 54.1279



14.9695, 15.5529, 15.1175



22.0697, 16.7135, 2.0628



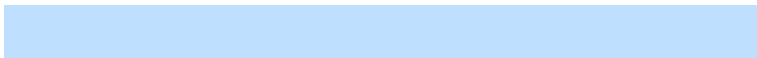
1.7238, 1.4209, 0.1834

Inverse Universe

The Inverse Universe completely reimagines the original color for something new.



54.4185, 58.4890, 81.8206



66.0183, 71.1677, 104.8650



49.1480, 47.9481, 80.0637



14.1751, 15.0716, 18.3063



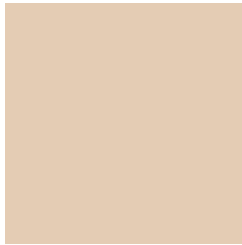
11.6780, 10.4181, 43.7786



0.9559, 0.9556, 3.2660

Previews

White Background



This preview shows how the XYZ color 61.8260, 62.9750, 52.0768 looks on a white background.

Color Contrast Check

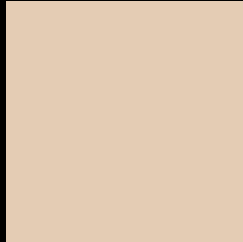
Large Text (above 18pt) WCAG AA × Fail

Any Text WCAG AA × Fail

Large Text (above 18pt) WCAG AAA × Fail

Any Text WCAG AAA × Fail

Black Background



This preview shows how the XYZ color 61.8260, 62.9750, 52.0768 looks on a black background.

Color Contrast Check

Large Text (above 18pt) WCAG AA ✓ Pass

Any Text WCAG AA ✓ Pass

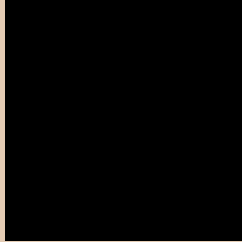
Large Text (above 18pt) WCAG AAA ✓ Pass

Any Text WCAG AAA ✓ Pass

If you want to check with other color combinations, try the [Color Contrast Checker](#).

XYZ 61.8260, 62.9750, 52.0768

Background



This preview shows how black text looks on a background with the XYZ color 61.8260, 62.9750, 52.0768.



This preview shows how white text looks on a background with the XYZ color 61.8260, 62.9750,

Color Blindness Simulation

Color vision deficiency is a very complex topic, and I could not describe the different causes any better than Wikipedia does, so if you want to learn more, you should check out their [article about color blindness](#).

Dichromacy



Original Color

61.8260, 62.9750, 52.0768

Protanopia

59.6698, 62.9085, 53.2536

Deuteranopia

64.2547, 62.8219, 52.4553



Tritanopia

65.9679, 62.9089, 72.9557

Trichromacy



Original Color

61.8260, 62.9750, 52.0768

Protanomaly

60.5360, 63.0084, 52.6873

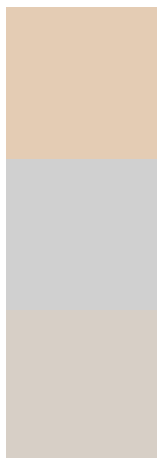
Deuteranomaly

63.1588, 62.6019, 52.4706

Tritanomaly

64.5023, 63.0265, 64.6428

Monochromacy



Original Color

61.8260, 62.9750, 52.0768

Achromatopsia

59.9535, 63.0757, 68.6895

Achromatomaly

60.5302, 63.1499, 62.4250

CSS Examples

Text

The CSS property to change the color of the text to XYZ 61.8260, 62.9750, 52.0768 is called "color". The color property can be set on classes, ids or directly on the HTML element.

This example shows how text in the color `rgb(228, 204, 180)` looks like.

```
.text, #text, p{  
    color:rgb(228, 204, 180)  
}
```

If you want to add a text shadow in that color use the text-shadow property, you can generate a text shadow directly with our [CSS Text Shadow Generator](#).

Here you see how black text with a 4 pixel rgb(228, 204, 180) colored shadow looks like.

```
.shadow{ text-shadow: 4px 4px 2px rgb(228, 204, 180) }
```

Border

The CSS property to change the border of an element to XYZ 61.8260, 62.9750, 52.0768 is called "border". The border property can be set on classes, ids or directly on the HTML element.

This example shows the color as border, it can be applied via the CSS property "border" or "border-color".

```
.border, #border, table{ border:4px solid rgb(228, 204, 180) }
```


If only the border color should be changed use the property `border-color`.

```
.border{ border-color:rgb(228, 204, 180) }
```

If you want to add a box shadow in that color use:

Here you see how a box with a 4 pixel `rgb(228, 204, 180)` colored shadow looks like.

```
.boxshadow{ -moz-box-shadow:4px 4px 4px  
4px rgb(228, 204, 180); -webkit-box-  
shadow:4px 4px 4px 4px rgb(228, 204, 180);  
box-shadow:4px 4px 4px 4px rgb(228, 204,  
180) }
```

Background

The CSS property to change the background color of an element to XYZ 61.8260, 62.9750, 52.0768 is called "background". The background property can be set on classes, ids or directly on the HTML element.

```
.background, #background, body{  
background: rgb(228, 204, 180) }
```

If only the background color should be changed can be used:

```
.background{ background-color: rgb(228,  
204, 180) }
```

This example shows the color as background, it is applied via the CSS property "background".

To optimize and compress your CSS code, you can use our [online CSS compressor and optimizer](#) based on csstidy. If you want to create a linear or radial gradient as background or border, check our [CSS Gradient Generator](#).

Hey! You found this booklet interesting? Support Converting Colors with the new Membership Option!

The pro membership hides all ads, plus gives you double the colors in the color bucket, and more awesome pro features!

[Learn more, Memberships starting at \\$2.50/m!](#)

**Follow me
on Twitter!**

@ConvertingColor