

Converting Colors

XYZ(61.8829, 61.2183, 68.4884)

Have a look what the booklet for
XYZ(61.8829, 61.2183, 68.4884)
contains.

XYZ(61.8582, 61.2348, 68.2337)	3
<i>Conversions</i>	4
<i>Details</i>	6
<i>Harmonies</i>	12
<i>Previews</i>	24
<i>Color Blindness Simulation</i>	28
<i>CSS Examples</i>	31

Color

**XYZ(61.8582, 61.2348,
68.2337)**

Conversions

Conversions Part 1

Format	Color
Hex	<code>DDC8D0</code>
RGB	<code>221, 200, 208</code>
RGB Percent	<code>87%, 78%, 82%</code>
CMY	<code>0.1333, 0.2157, 0.1843</code>
CMYK	<code>0.00, 0.10, 0.06, 0.13</code>
HSL	<code>337°, 24%, 83%</code>
HSV	<code>337°, 10%, 87%</code>
XYZ	<code>61.8582, 61.2348, 68.2337</code>
YIQ	<code>207.1910, 9.9480, 6.9400</code>

Conversions

Conversions Part 2

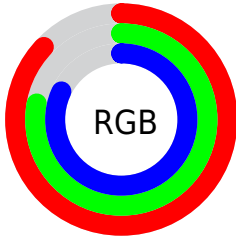
Format	Color
R _Y B	221, 200, 208
Decimal	14534864
CIE Lab	82.50, 8.71, -1.31
CIE LCh	83, 8.810, 351.423
Yxy	61.2348, 0.3233, 0.3201
Android (android.graphics.Color)	4292724944 (0xFFDDC8D0)
YUV	207.1910, 0.3988, 12.1105
Hunter-Lab	78.2527, 4.1609, 3.0780

Details

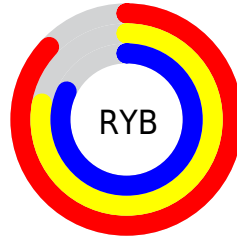
The XYZ color **61.8582, 61.2348, 68.2337** is a light color, and the websafe version is hex **CCCCCC**. A complement of this color would be **61.6884, 68.7979, 72.9821**, and the grayscale version is **59.4257, 62.5205, 68.0848**.

A 20% lighter version of the original color is **95.0500, 100.0000, 108.9000**, and **31.8375, 30.9979, 34.8770** is the 20% darker color. If you saturate the color by 10%, you get **55.4940, 51.0848, 58.1618**, and if you desaturate by 10%, it is **69.1110, 72.9279, 79.3199**.

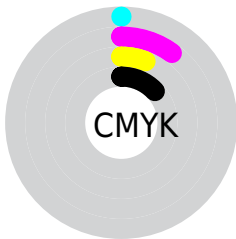
Distribution



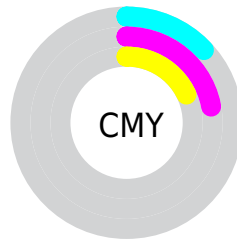
- Red (87%)
- Green (78%)
- Blue (82%)



- Red (87%)
- Yellow (78%)
- Blue (82%)



- Cyan (0%)
- Magenta (10%)
- Yellow (6%)
- Black (13%)



- Cyan (13%)
- Magenta (22%)
- Yellow (18%)

Brightness & Saturation Gradients

These gradients show how the XYZ color 61.8582, 61.2348, 68.2337 changes by changing the brightness by 10 percent. The first figure shows a shift by +10% for each color and the second figure -10%.

Similar to the brightness gradients but the following saturation gradients show a change of the XYZ color 61.8582, 61.2348, 68.2337 by changing the saturation by 10% instead.

61.8582, 61.2348,
68.2337

61.8582, 61.2348,
68.2337

421.1395,
429.1344, 472.9441

45.1733, 44.4147,
49.6200

106.6117,
106.6188, 118.3438

31.7958, 30.9967,
34.7425

135.4109,
135.9515, 150.6772

21.3604, 20.5963,
23.1826

168.9790,
170.2239, 188.4211

13.5016, 12.8292,
14.5218

207.6813,
209.8203, 231.9937

7.8542, 7.3111,
8.3416

251.8831,
255.1252, 281.8139

4.0528, 3.6574,
4.2234

301.9499,

1.7321, 1.4838,

306.5229, 338.2999

1.7487

358.2469,
364.3978, 401.8705

■ 0.4762, 0.2773,
0.3938

■ 0.0000, 0.0000,
0.0000

■ 61.8582, 61.2348,
68.2337

■ 61.8582, 61.2348,
68.2337

■ 55.4940, 51.0848,
58.1618

■ 69.1110, 72.9279,
79.3199

■ 49.9779, 42.4051,
49.0705

■ 77.2803, 86.2169,
91.4450

■ 45.2740, 35.1293,
40.9298

■ 82.6861, 93.7351,
103.3996

■ 41.3416, 29.1824,
33.7067

■ 83.6291, 94.1123,
108.3655

■ 38.1366, 24.4826,
27.3659

■ 35.6099, 20.9387,
21.8697

■ 33.7059, 18.4471,
17.1768

■ 32.3594, 16.8852,
13.2414

■ 31.4648, 16.0498,
10.0026

Harmonies

Analogous

The Analogous color harmony consists of three colors that are next to each other on the color wheel.



61.0803, 61.2348, 73.3557



61.8582, 61.2348, 68.2337



61.6400, 61.2348, 62.9559

Triad

The Triadic color harmony groups three colors that are evenly spaced from another and form a triangle on the color wheel.



61.8582, 61.2348, 68.2337



56.8886, 61.2348, 57.4744



55.9718, 61.2348, 75.1190

Complementary

The Complementary color scheme is a pair of colors which are on the opposite of each other on the color wheel.



61.8582, 61.2348, 68.2337



61.6884, 68.7979, 72.9821

Split Complementary

Split-complementary colors differ from the complementary color scheme. The scheme consists of three colors, the original color and two neighbors of the complement color.



54.8940, 61.2348, 70.5362



61.8582, 61.2348, 68.2337



55.4153, 61.2348, 60.4114

Square

The Square scheme is like the rectangle color scheme, but the four colors are evenly spaced on the color wheel.



61.8582, 61.2348, 68.2337



58.7438, 61.2348, 56.9319



54.6925, 61.2348, 65.1388



57.6632, 61.2348, 77.4691

Rectangle

The Rectangle color scheme consists of four colors that form a rectangle on the color wheel.



61.8582, 61.2348, 68.2337



60.9609, 61.2348, 60.0425



54.6925, 61.2348, 65.1388



55.5273, 61.2348, 73.7772

Sweetspot

The Sweet Spot groups the original color and five complimentary colors.



61.8599, 61.2375, 68.2350



91.9046, 94.9145, 104.1356



61.1336, 60.6706, 76.8958



19.4956, 20.0319, 22.0215



0.0000, 0.0000, 0.0000



20.3446, 21.4041, 23.3091

Same Dimension

The Same Dimension uses a secret algorithm to generate beautiful new colors.



61.8599, 61.2375, 68.2350



84.0741, 82.3223, 92.0648



61.4725, 61.9975, 63.3736



13.2602, 13.1332, 14.6315



18.3067, 9.3237, 5.9949



1.2272, 0.6205, 0.6053

Inverse Universe

The Inverse Universe completely reimagines the original color for something new.



61.8599, 61.2375, 68.2350



84.0741, 82.3223, 92.0648



62.0868, 67.9299, 78.2468



13.2602, 13.1332, 14.6315



18.3067, 9.3237, 5.9949



1.2272, 0.6205, 0.6053

Previews

White Background



This preview shows how the XYZ color 61.8582, 61.2348, 68.2337 looks on a white background.

Color Contrast Check

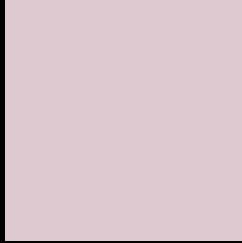
Large Text (above 18pt) WCAG AA × Fail

Any Text WCAG AA × Fail

Large Text (above 18pt) WCAG AAA × Fail

Any Text WCAG AAA × Fail

Black Background



This preview shows how the XYZ color 61.8582, 61.2348, 68.2337 looks on a black background.

Color Contrast Check

Large Text (above 18pt) WCAG AA ✓ Pass

Any Text WCAG AA ✓ Pass

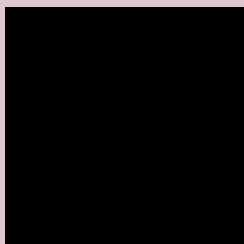
Large Text (above 18pt) WCAG AAA ✓ Pass

Any Text WCAG AAA ✓ Pass

If you want to check with other color combinations, try the [Color Contrast Checker](#).

XYZ 61.8582, 61.2348, 68.2337

Background



This preview shows how black text looks on a background with the XYZ color 61.8582, 61.2348, 68.2337.



This preview shows how white text looks on a background with the XYZ color 61.8582, 61.2348,

Color Blindness Simulation

Color vision deficiency is a very complex topic, and I could not describe the different causes any better than Wikipedia does, so if you want to learn more, you should check out their [article about color blindness](#).

Dichromacy



Original Color

61.8582, 61.2348, 68.2337

Protanopia

59.0829, 61.1543, 70.3180

Deuteranopia

62.5491, 61.2482, 68.1999



Tritanopia

62.8134, 61.2827, 72.8081

Trichromacy



Original Color

61.8582, 61.2348, 68.2337

Protanomaly

60.1402, 61.3621, 69.6471

Deuteranomaly

62.2400, 61.0889, 68.1854

Tritanomaly

62.4313, 61.1299, 70.7961

Monochromacy



Original Color

61.8582, 61.2348, 68.2337

Achromatopsia

59.3074, 62.3960, 67.9493

Achromatomaly

60.0067, 61.6878, 67.7757

CSS Examples

Text

The CSS property to change the color of the text to XYZ 61.8582, 61.2348, 68.2337 is called "color". The color property can be set on classes, ids or directly on the HTML element.

This example shows how text in the color `rgb(221, 200, 208)` looks like.

```
.text, #text, p{  
    color:rgb(221, 200, 208)  
}
```

If you want to add a text shadow in that color use the text-shadow property, you can generate a text shadow directly with our [CSS Text Shadow Generator](#).

Here you see how black text with a 4 pixel rgb(221, 200, 208) colored shadow looks like.

```
.shadow{ text-shadow: 4px 4px 2px rgb(221, 200, 208) }
```

Border

The CSS property to change the border of an element to XYZ 61.8582, 61.2348, 68.2337 is called "border". The border property can be set on classes, ids or directly on the HTML element.

This example shows the color as border, it can be applied via the CSS property "border" or "border-color".

```
.border, #border, table{ border:4px solid rgb(221, 200, 208) }
```


If only the border color should be changed use the property `border-color`.

```
.border{ border-color:rgb(221, 200, 208) }
```

If you want to add a box shadow in that color use:

Here you see how a box with a 4 pixel `rgb(221, 200, 208)` colored shadow looks like.

```
.boxshadow{ -moz-box-shadow:4px 4px 4px 4px rgb(221, 200, 208); -webkit-box-shadow:4px 4px 4px 4px rgb(221, 200, 208); box-shadow:4px 4px 4px 4px rgb(221, 200, 208) }
```

Background

The CSS property to change the background color of an element to XYZ 61.8582, 61.2348, 68.2337 is called "background". The background property can be set on classes, ids or directly on the HTML element.

```
.background, #background, body{  
background: rgb(221, 200, 208) }
```

If only the background color should be changed can be used:

```
.background{ background-color: rgb(221,  
200, 208) }
```

This example shows the color as background, it is applied via the CSS property "background".

To optimize and compress your CSS code, you can use our [online CSS compressor and optimizer](#) based on csstidy. If you want to create a linear or radial gradient as background or border, check our [CSS Gradient Generator](#).

Hey! You found this booklet interesting? Support Converting Colors with the new Membership Option!

The pro membership hides all ads, plus gives you double the colors in the color bucket, and more awesome pro features!

[Learn more, Memberships starting at \\$2.50/m!](#)

**Follow me
on Twitter!**

@ConvertingColor