

Converting Colors

XYZ(61.8941, 60.0386, 50.1982)

Have a look what the booklet for
XYZ(61.8941, 60.0386, 50.1982)
contains.

XYZ(61.8119, 59.9067, 50.4248)	3
<i>Conversions</i>	4
<i>Details</i>	6
<i>Harmonies</i>	12
<i>Previews</i>	24
<i>Color Blindness Simulation</i>	28
<i>CSS Examples</i>	31

Color

**XYZ(61.8119, 59.9067,
50.4248)**

Conversions

Conversions Part 1

Format	Color
Hex	EBC3B2
RGB	235, 195, 178
RGB Percent	92%, 76%, 70%
CMY	0.0784, 0.2353, 0.3020
CMYK	0.00, 0.17, 0.24, 0.08
HSL	18°, 59%, 81%
HSV	18°, 24%, 92%
XYZ	61.8119, 59.9067, 50.4248
YIQ	205.0220, 29.2970, 3.1930

Conversions

Conversions Part 2

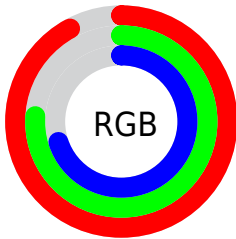
Format	Color
R _Y B	235, 202, 178
Decimal	15451058
CIE Lab	81.79, 11.70, 13.86
CIE LCh	82, 18.137, 49.848
Yxy	59.9067, 0.3591, 0.3480
Android (android.graphics.Color)	4293641138 (0xFFEBC3B2)
YUV	205.0220, -13.3218, 26.2907
Hunter-Lab	77.3994, 7.1028, 15.5529

Details

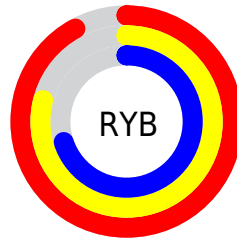
The XYZ color **61.8119, 59.9067, 50.4248** is a light color, and the websafe version is hex **FFCCCC**. A complement of this color would be **58.4263, 65.6041, 88.1810**, and the grayscale version is **58.1126, 61.1390, 66.5804**.

A 20% lighter version of the original color is **90.9017, 96.8213, 91.7393**, and **31.5866, 29.9954, 23.5269** is the 20% darker color. If you saturate the color by 10%, you get **56.1590, 52.0588, 37.8797**, and if you desaturate by 10%, it is **68.2803, 68.7379, 65.2372**.

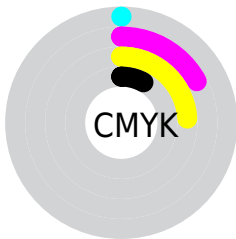
Distribution



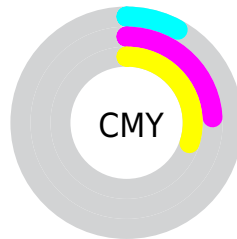
- Red (92%)
- Green (76%)
- Blue (70%)



- Red (92%)
- Yellow (79%)
- Blue (70%)



- Cyan (0%)
- Magenta (17%)
- Yellow (24%)
- Black (8%)





- Cyan (8%)
- Magenta (24%)
- Yellow (30%)

Brightness & Saturation Gradients


These gradients show how the XYZ color 61.8119, 59.9067, 50.4248 changes by changing the brightness by 10 percent. The first figure shows a shift by +10% for each color and the second figure -10%.


Similar to the brightness gradients but the following saturation gradients show a change of the XYZ color 61.8119, 59.9067, 50.4248 by changing the saturation by 10% instead.


 61.8119, 59.9067,
50.4248

 61.8119, 59.9067,
50.4248


420.9731,
424.2538, 405.1074

 45.1358, 43.3434,
35.3775


 106.5451,
104.6943, 92.2067

 31.7661, 30.1547,
23.6679


135.3329,
133.6875, 119.7785

 21.3376, 19.9560,
14.8776


168.8885,
167.5927, 152.3621

 13.4849, 12.3631,
8.5878

207.5775,
206.7944, 190.3761

 7.8426, 6.9915,
4.3802

251.7651,
251.6769, 234.2391

 4.0453, 3.4568,
1.8362

301.8166,

 1.7278, 1.3746,

302.6248, 284.3697

0.4516

358.0975,
360.0222, 341.1862

■ 0.4736, 0.1979,
0.0000

■ 0.0000, 0.0000,
0.0000

■ 61.8119, 59.9067,
50.4248

■ 61.8119, 59.9067,
50.4248

■ 56.1590, 52.0588,
37.8797

■ 68.2803, 68.7379,
65.2372

■ 51.2830, 45.1512,
27.4854

■ 75.5910, 78.5768,
82.4181

■ 47.1491, 39.1499,
19.1203

■ 83.7757, 89.4576,
102.0671

■ 43.7180, 34.0156,
12.6493

■ 88.0711, 96.4022,
108.5734

■ 40.9460, 29.7059,
7.9205

■ 38.7842, 26.1743,
4.7584

■ 37.1750, 23.3686,
2.9492

■ 36.4579, 22.0559,
2.3357

Harmonies

Analogous

The Analogous color harmony consists of three colors that are next to each other on the color wheel.



64.1369, 59.9067, 58.3386



61.8119, 59.9067, 50.4248



58.2449, 59.9067, 46.6235

Triad

The Triadic color harmony groups three colors that are evenly spaced from another and form a triangle on the color wheel.



61.8119, 59.9067, 50.4248



50.0063, 59.9067, 61.5878



59.4719, 59.9067, 87.0998

Complementary

The Complementary color scheme is a pair of colors which are on the opposite of each other on the color wheel.



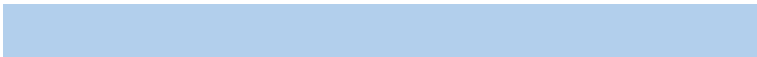
61.8119, 59.9067, 50.4248



58.4263, 65.6041, 88.1810

Split Complementary

Split-complementary colors differ from the complementary color scheme. The scheme consists of three colors, the original color and two neighbors of the complement color.



55.6538, 59.9067, 88.2214



61.8119, 59.9067, 50.4248



50.3018, 59.9067, 72.6399

Square

The Square scheme is like the rectangle color scheme, but the four colors are evenly spaced on the color wheel.



61.8119, 59.9067, 50.4248



51.5041, 59.9067, 52.5740



52.3302, 59.9067, 82.6777



62.7446, 59.9067, 79.7656

Rectangle

The Rectangle color scheme consists of four colors that form a rectangle on the color wheel.



61.8119, 59.9067, 50.4248



55.6915, 59.9067, 46.6080



52.3302, 59.9067, 82.6777



58.2060, 59.9067, 88.2451

Sweetspot

The Sweet Spot groups the original color and five complimentary colors.



61.8135, 59.9094, 50.4260



88.4417, 91.1707, 93.1720



62.9483, 54.6102, 74.1379



18.8134, 19.3575, 19.6671



0.0000, 0.0000, 0.0000



20.3446, 21.4041, 23.3091

Same Dimension

The Same Dimension uses a secret algorithm to generate beautiful new colors.



61.8135, 59.9094, 50.4260



70.9678, 67.3627, 53.0049



68.5915, 73.4655, 52.6854



15.4317, 15.7865, 15.7525



20.3875, 12.4693, 1.3323



1.6822, 1.1417, 0.1317

Inverse Universe

The Inverse Universe completely reimagines the original color for something new.



58.4263, 65.6041, 88.1810



66.2394, 75.2930, 105.6496



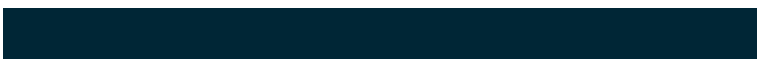
51.8455, 52.4426, 85.9874



15.1163, 16.3190, 19.2754



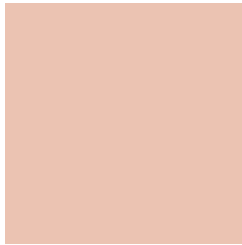
15.9399, 18.5268, 46.4789



1.3349, 1.6213, 3.6775

Previews

White Background



This preview shows how the XYZ color 61.8119, 59.9067, 50.4248 looks on a white background.

Color Contrast Check

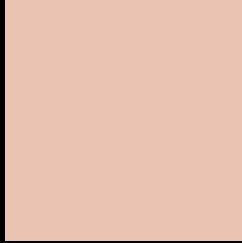
Large Text (above 18pt) WCAG AA × Fail

Any Text WCAG AA × Fail

Large Text (above 18pt) WCAG AAA × Fail

Any Text WCAG AAA × Fail

Black Background



This preview shows how the XYZ color 61.8119, 59.9067, 50.4248 looks on a black background.

Color Contrast Check

Large Text (above 18pt) WCAG AA ✓ Pass

Any Text WCAG AA ✓ Pass

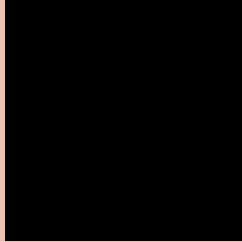
Large Text (above 18pt) WCAG AAA ✓ Pass

Any Text WCAG AAA ✓ Pass

If you want to check with other color combinations, try the [Color Contrast Checker](#).

XYZ 61.8119, 59.9067, 50.4248

Background



This preview shows how black text looks on a background with the XYZ color 61.8119, 59.9067, 50.4248.



This preview shows how white text looks on a background with the XYZ color 61.8119, 59.9067,

Color Blindness Simulation

Color vision deficiency is a very complex topic, and I could not describe the different causes any better than Wikipedia does, so if you want to learn more, you should check out their [article about color blindness](#).

Dichromacy



Original Color

61.8119, 59.9067, 50.4248

Protanopia

56.9508, 60.0863, 52.8522

Deuteranopia

61.0545, 59.8500, 50.4538



Tritanopia

65.0313, 59.8950, 66.5259

Trichromacy



Original Color

61.8119, 59.9067, 50.4248

Protanomaly

58.5100, 59.8604, 52.1865

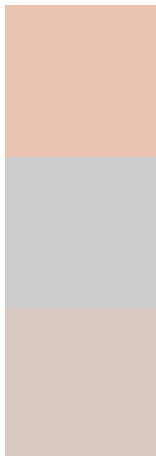
Deuteranomaly

61.3801, 60.0178, 50.4690

Tritanomaly

63.7385, 59.6893, 60.3864

Monochromacy



Original Color

61.8119, 59.9067, 50.4248

Achromatopsia

58.0276, 61.0496, 66.4830

Achromatomaly

59.0559, 60.3123, 60.1586

CSS Examples

Text

The CSS property to change the color of the text to XYZ 61.8119, 59.9067, 50.4248 is called "color". The color property can be set on classes, ids or directly on the HTML element.

This example shows how text in the color `rgb(235, 195, 178)` looks like.

```
.text, #text, p{  
    color:rgb(235, 195, 178)  
}
```

If you want to add a text shadow in that color use the text-shadow property, you can generate a text shadow directly with our [CSS Text Shadow Generator](#).

Here you see how black text with a 4 pixel rgb(235, 195, 178) colored shadow looks like.

```
.shadow{ text-shadow: 4px 4px 2px rgb(235, 195, 178) }
```

Border

The CSS property to change the border of an element to XYZ 61.8119, 59.9067, 50.4248 is called "border". The border property can be set on classes, ids or directly on the HTML element.

This example shows the color as border, it can be applied via the CSS property "border" or "border-color".

```
.border, #border, table{ border:4px solid rgb(235, 195, 178) }
```


If only the border color should be changed use the property border-color.

```
.border{ border-color:rgb(235, 195, 178) }
```

If you want to add a box shadow in that color use:

Here you see how a box with a 4 pixel rgb(235, 195, 178) colored shadow looks like.

```
.boxshadow{ -moz-box-shadow:4px 4px 4px  
4px rgb(235, 195, 178); -webkit-box-  
shadow:4px 4px 4px 4px rgb(235, 195, 178);  
box-shadow:4px 4px 4px 4px rgb(235, 195,  
178) }
```

Background

The CSS property to change the background color of an element to XYZ 61.8119, 59.9067, 50.4248 is called "background". The background property can be set on classes, ids or directly on the HTML element.

```
.background, #background, body{  
background: rgb(235, 195, 178) }
```

If only the background color should be changed can be used:

```
.background{ background-color: rgb(235,  
195, 178) }
```

This example shows the color as background, it is applied via the CSS property "background".

To optimize and compress your CSS code, you can use our [online CSS compressor and optimizer](#) based on csstidy. If you want to create a linear or radial gradient as background or border, check our [CSS Gradient Generator](#).

Hey! You found this booklet interesting? Support Converting Colors with the new Membership Option!

The pro membership hides all ads, plus gives you double the colors in the color bucket, and more awesome pro features!

[Learn more, Memberships starting at \\$2.50/m!](#)

**Follow me
on Twitter!**

@ConvertingColor